



Free Knitting Pattern
Lion Brand® Vanna's Choice®
Bunny Hoodie
Pattern Number: L32356



Free Knitting Pattern from Lion Brand Yarn

Lion Brand® Vanna's Choice®

Bunny Hoodie

Pattern Number: L32356

SKILL LEVEL: Intermediate (Level 3)

SIZE: 12 mos, 24 months (2 yrs), Child 3

Chest 21 (24, 27) in. (53.5 (61, 68.5) cm)

Length 13 (14 1/2, 16) in. (33 (37, 40.5) cm)

Note: Pattern is written for smallest size with changes for larger sizes in parentheses. When only one number is given, it applies to all sizes. To follow pattern more easily, circle all numbers pertaining to your size before beginning.

CORRECTIONS: None as of Apr 4, 2014. To check for later updates, click [here](#).

MATERIALS

- 860-103 Lion Brand Vanna's Choice

Yarn: Soft Pink

2 2, 3 Balls (A)

- 860-112 Lion Brand Vanna's

Choice Yarn: Raspberry

1 1, 1 Ball (B)

- 860-100 Lion Brand Vanna's

Choice Yarn: White

1 1, 1 Ball (C)

- The Pom (Single): Bunny

- Lion Brand Knitting Needles- Size 9 [5.5 mm]

- Lion Brand Split Ring Stitch Markers

- Lion Brand Large-Eye Blunt Needles (Set of 6)

- Additional Materials

Sewing needle and thread

Separating zipper

Note: Wait until you've completed making the Hoodie before purchasing the correct length zipper.

**Vanna's Choice® (Article #860).*

100% Premium Acrylic

400, 401, 403: 92% Acrylic, 8% Rayon

402: 96% Acrylic, 4% Rayon;

package size: **Solids:** 3.5 oz (100 g), 170 yards (156 m)

Prints, Tweeds, & Heathers: 3 ozs (85 g), 145 yards (133 meters)

Twists: 2.5 oz (70 g), 121 yards (111 meters)



GAUGE:

16 sts + 22 rows = 4 in. (10 cm) in St st (k on RS, p on WS).

When you match the gauge in a pattern, your project will be the size specified in the pattern and the materials specified in the pattern will be sufficient. The needle or hook size called for in the pattern is based on what the designer used, but it is not unusual for gauge to vary from person to person. If it takes you fewer stitches and rows to make your swatch, try using a smaller size hook or needles; if more stitches and rows, try a larger size hook or needles.

[Making a Gauge Swatch](#)

STITCH EXPLANATION:

M1 (make 1) An increase worked by lifting the horizontal strand lying between needles and placing it onto left needle.

Knit this new stitch through the back loop – 1 st increased.

ssk (slip, slip, knit) Slip next 2 sts as if to knit, one at a time, to right needle; insert left needle into fronts of these 2 sts and knit them tog – 1 st decreased.

PATTERN STITCHES

K2, p2 Rib (multiple of 4 sts + 2 extra sts)

Row 1 (WS): P2, *K2, p2; rep from * to end of row.

Row 2: K the knit sts and p the purl sts.

Rep Row 2 for K2, p2 Rib.

Seed St (worked over an odd number of sts)

Row 1 (RS): *K1, p1; rep from * to last st, k1.

Row 2: K the purl sts and p the knit sts.

Rep Row 2 for Seed st.

NOTES:

1. Hoodie is worked in 10 pieces; Back, 2 Fronts, 2 Sleeves, Hood, 2 Outer Ears and 2 Inner Ears.
2. Fronts are worked in intarsia colorwork, following Chart. Bunny 'belly' is worked in Seed st while rem sts are worked in St st (k on RS, p on WS).
3. When working Bunny Belly Chart for Left Front, read RS rows from right to left and WS rows from left to right. When working Chart for Right Front, read RS rows from left to right and WS rows from right to left.
4. When working in intarsia colorwork, use a separate ball of yarn for each color section. Do not carry unused color(s) across WS. Twist yarns on WS to prevent holes.
5. When changing colors of Chart, first st should always be worked in St st.
6. When you see '- 12 sts' in the instructions, this lets you know how many sts you will have at the end of that specific row.

BACK

With B, cast on 50 (54, 58) sts.

Rows 1-5: Work in K2, p2 rib.

Change to A and, beg with a RS (knit) row, work in St st (k on RS, p on WS) for 6 rows.

Dec Row (RS): K1, ssk, k to last 3 sts, k2tog, k1 – 48 (52, 56) sts at the end of this row.

Work 17 rows even (without increasing or decreasing) in St st.

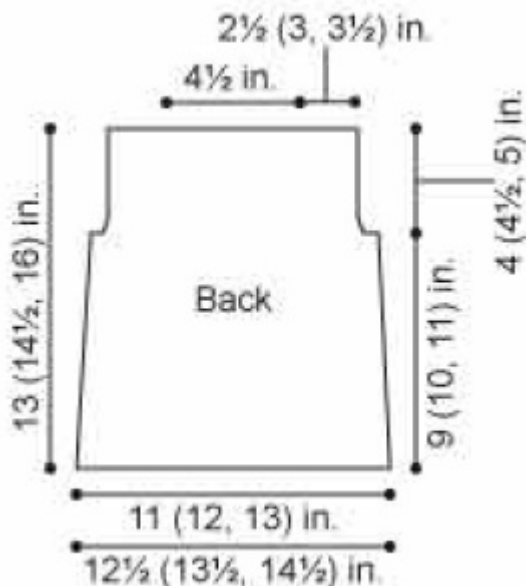
Rep last 18 rows once, then rep Dec Row once more – 44 (48, 52) sts rem.

Work even in St st until piece measures about 9 (10, 11) in. (23 (25.5, 28) cm) from beg, end with a WS row as the last row you work.

Shape Armholes

Next Row (RS): Bind off 2 sts, k to end of row – 42 (46, 50) sts rem.

Next Row: Bind off 2 sts, p to end of row – 40 (44, 48) sts rem.



Dec Row (RS): K1, ssk, k to last 3 sts, k2tog, k1 – 38 (42, 46) sts rem.
 Work even in St st until armholes measure 4 (4 1/2, 5) in. (10 (11.5, 12.5) cm).
 Bind off.

LEFT FRONT

With B, cast on 23 (27, 31) sts.

Rows 1 and 3 (WS): K1, *p2, k2; rep from * to last 2 sts, p2.

Rows 2 and 4: *K2, p2; rep from * to last 3 sts, k3.

Row 5: Rep Row 1.

Begin Chart

Next Row (RS): With A, k 3 (7, 11) sts, work Row 1 of Chart over next 20 sts.

Continue to work Chart pattern on 20 sts, as established, keeping rem sts in St st with A, until Row 6 of Chart has been completed.

Shape Side

Dec Row (RS): K1, ssk, work in Chart as established to end of row – 22 (26, 30) sts at the end of this row.

Keeping in Chart, work 17 rows even.

Rep last 18 rows once, then rep Dec Row once more – 20 (24, 28) sts rem.

Work until piece measures about 9 (10, 11) in. (23 (25.5, 28) cm) from beg, end with a WS row as the last row you work.

Shape Armhole

Next Row (RS): Bind off 2 sts, work as established to end of row – 18 (22, 26) sts rem. **Note:** For smallest size, work only 18 sts of Chart.

Work 1 row in pattern as established.

Dec Row (RS): K1, ssk, work to end of row – 17 (21, 25) sts rem.

Work even until armhole measures 2 1/2 (3, 3 1/2) in. (6.5 (7.5, 9) cm), end with a RS row as the last row you work.

Note: When all rows of Chart have been completed, continue to work in St st with A only.

Shape Neck

Next Row (WS): Bind off 5 (6, 8) sts, work to end of row – 12 (15, 17) sts rem.

Dec 1 st at neck edge every row 2 (3, 3) times – 10 (12, 14) sts rem when all decs have been completed.

Work even until armhole measures 4 (4 1/2, 5) in. (10 (11.5, 12.5) cm).

Bind off.

RIGHT FRONT

With B, cast on 23 (27, 31) sts.

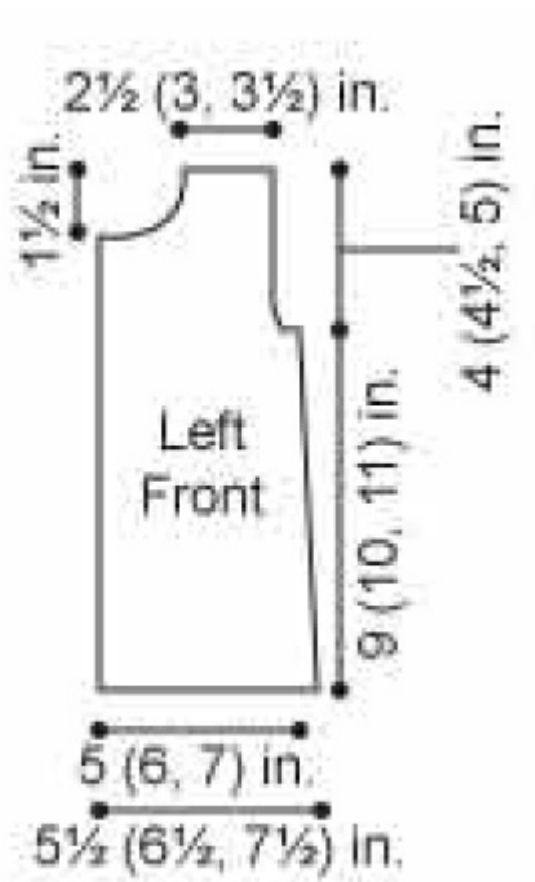
Rows 1 and 3 (WS): *P2, k2; rep from * to last 3 sts, p2, k1.

Rows 2 and 4: K1, *k2, p2; rep from * to last 2 sts, k2.

Row 5: Rep Row 1.

Begin Chart

Row 1 (RS): Work Row 1 of Chart across first 20 sts,



reading Chart from left to right, with A only, k 3 (7, 11) sts. Continue to work Chart pattern on 20 sts as established, keeping rem sts in St st with A, until Row 6 of Chart has been completed.

Shape Side

Dec Row (RS): Work as established to last 3 sts, k2tog, k1 – 22 (26, 30) sts at the end of this row.

Keeping in Chart, work 17 rows even.

Rep last 18 rows once, then rep Dec Row once more – 20 (24, 28) sts rem.

Work until piece measures about 9 (10, 11) in. (23 (25.5, 28) cm) from beg, end with a RS row as last row you work.

Shape Armhole

Next Row (WS): Bind off 2 sts, work as established to end of row – 18 (22, 26) sts rem. **Note:** For smallest size, work only 18 sts of Chart.

Dec Row (RS): Work as established to last 3 sts, k2tog, k1 – 17 (21, 25) sts rem.

Work even until armhole measures 2 1/2 (3, 3 1/2) in. (6.5 (7.5, 9) cm), end with a WS row as the last row you work.

Note: When all rows of Chart have been worked, continue to work in St st with A only.

Shape Neck

Next Row (RS): Bind off 5 (6, 8) sts, work to end of row – 11 (15, 17) sts rem.

Dec 1 st at neck edge every row 2 (3, 3) times – 10 (12, 14) sts rem when all decs have been completed.

Work even until armhole measures 4 (4 1/2, 5) in. (10 (11.5, 12.5) cm).

Bind off.

SLEEVES (make 2)

With B, cast on 30 sts.

Rows 1-5: Work in K2, p2 Rib.

Change to A and, beg with a RS row, work in St st for 6 rows.

Inc Row (RS): K1, M1, k to last st, M1, k1 – 32 sts.

Work even in St st for 5 rows.

Rep last 6 rows 2 (4, 6) more times – 36 (40, 44) sts.

Work even in St st until piece measures 8 (9, 10) in. (20.5 (23, 25.5) cm) from beg.

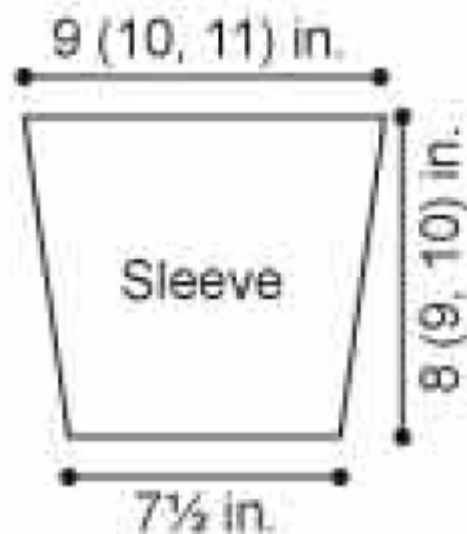
Bind off.

HOOD

With B, cast on 66 (66, 74) sts.

Rows 1-5: Work in K2, p2 Rib.

Change to A and, beg with a RS row, work in St st until piece measures 5 (5, 7) in. (12.5 (12.5, 18) cm) from beg, end with a WS row as the last row you work.



Shape Gusset

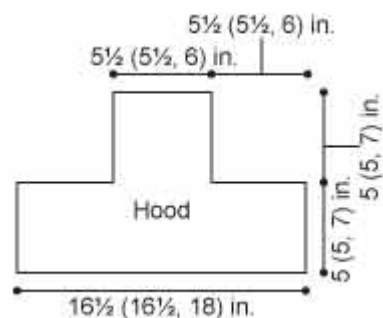
Next Row: Bind off 22 (22, 25) sts, k to end of row.

Next Row: Bind off 22 (22, 25) sts, p to end of row – 22 (22, 24) sts rem.

Work even in St st until piece measures 5 (5, 7) in. (12.5 (12.5, 18) cm) from bound-off rows.

Bind off.

Sew bound-off edges to side edges of Gusset.



OUTER EAR (make 2)

With A, cast on 8 sts.

Beg with a RS row, work in St st for 4 rows.

Inc Row (RS): K1, M1, k to last st, M1, k1 – 10 sts.

Work even in St st for 5 rows.

Rep Inc Row – 12 sts.

Work even in St st for 9 rows.

Dec Row (RS): Ssk, k to last 2 sts, k2tog – 10 sts.

Next Row: Purl.

Rep last 2 rows 4 more times – 2 sts rem.

Bind off.

INNER EAR (make 2)

With B, cast on 5 sts.

Beg with a RS row, work in St st for 4 rows.

Inc Row (RS): K1, M1, k to last st, M1, k1 – 7 sts.

Work even in St st for 5 rows.

Rep Inc Row – 9 sts.

Work even in St st for 9 rows.

Dec Row: Ssk, k to last 2 sts, k2tog – 7 sts.

Next Row: Purl.

Rep last 2 rows 3 more times – 1 st rem.

Fasten off last st.

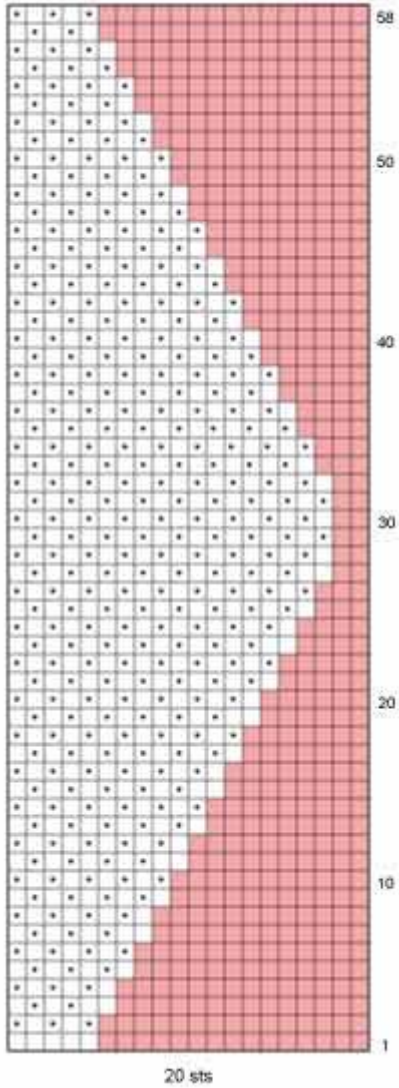
FINISHING

Sew shoulder seams. Sew in Sleeves, easing to fit. Sew side and Sleeve seams. With Ribbed edge of Hood at front neck edge, sew lower edge of Hood around neck edge of body, easing to fit. Sew one Inner Ear to each Outer Ear. Sew Ears on either side of Hood. Tie Pom to lower edge of Back for tail.

With sewing needle and thread, sew zipper along front edges from lower edge to hood.

Weave in ends.

Bunny Belly Chart



Stitch Key

- = With C, k on RS, p on WS
- = With C, p on RS, k on WS
- = With A, work in St st.

ABBREVIATIONS / REFERENCES

Click for explanation and illustration

| | |
|---------------------------------|-----------------------------------|
| <u>beg = begin(s)(ning)</u> | <u>dec = decreas(e)(s)(ing)</u> |
| <u>inc = increas(e)(s)(ing)</u> | <u>k = knit</u> |
| <u>k2tog = knit 2 together</u> | <u>p = purl</u> |
| <u>rem = remain(s)(ing)</u> | <u>rep = repeat(s)(ing)</u> |
| <u>RS = right side</u> | <u>St st = Stockinette stitch</u> |
| <u>st(s) = stitch(es)</u> | <u>WS = wrong side</u> |

Learn to knit instructions: <http://learnToKnit.LionBrand.com>

Every effort has been made to have the knitting and crochet instructions accurate and complete. We cannot be responsible for variance of individual knitters and crocheters, human errors, or typographical mistakes.

We want your project to be a success! If you need help with this or any other Lion Brand pattern, e-mail support is available 7 days per week. Just click [here](#) to explain your problem and someone will help you!

For thousands of free patterns, visit our website www.LionBrand.com

To order visit our website www.lionbrand.com or call: (800) 258-YARN (9276) any time!

When in New York City, visit the Lion Brand Yarn Studio where we have the largest selection of our yarns anywhere and over 100 classes and events monthly.

34 West 15th Street, NY, NY 10011

Copyright ©1998-2013 Lion Brand Yarn Company, all rights reserved. No pattern or other material may be reproduced -- mechanically, electronically, or by any other means, including photocopying -- without written permission of Lion Brand Yarn Company.