



**Free Knitting Pattern**  
**Lion Brand<sup>®</sup> Heartland Thick & Quick<sup>®</sup>**  
**Ski Lodge Cap**  
Pattern Number: L32368



# Free Knitting Pattern from Lion Brand Yarn

## Lion Brand® Heartland Thick & Quick®

### Ski Lodge Cap

Pattern Number: L32368

**SKILL LEVEL:** Intermediate (Level 3)

**SIZE:** One Size

**Finished Circumference** About 18 in. (45.5 cm), will stretch to fit a range of sizes.

**CORRECTIONS:** None as of Mar 11, 2014. To check for later updates, click [here](#).

#### **MATERIALS**

- 137-113 Lion Brand Heartland Thick & Quick Yarn: Redwood  
1 Ball (A) *\*Heartland Thick & Quick (Article #137). 100% acrylic; package size:*
- 137-153 Lion Brand Heartland Thick & Quick Yarn: Black Canyon  
1 Ball (B)
- Brittany Birchwood Double Pointed Needles - Size 11
- Lion Brand Split Ring Stitch Markers
- Lion Brand Large-Eye Blunt Needles (Set of 6)



#### **GAUGE:**

12 sts + 14 rnds = 4 in. (10 cm) over St st worked in rnds (k every rnd) following Chart.

When you match the gauge in a pattern, your project will be the size specified in the pattern and the materials specified in the pattern will be sufficient. The needle or hook size called for in the pattern is based on what the designer used, but is not unusual for gauge to vary from person to person. If it takes you fewer stitches and rows to make your swatch, try using a smaller size hook or needles; if more stitches and rows, try a larger size hook or needles.

[Making a Gauge Swatch](#)

#### **STITCH EXPLANATION:**

##### **PATTERN STITCH**

**K1, p1 Rib worked in rnds (over a multiple of 2 sts)**

**Rnd 1:** \*K1, p1; rep from \* to end of rnd.

Rep Rnd 1 for K1, p1 Rib worked in rnds.

#### **NOTES:**

1. Cap is worked in the rnd on double pointed needles.
2. Body of Cap is worked in stranded colorwork, following a Chart. When working stranded colorwork, carry color not in use evenly across WS of piece. Twist colors on WS to prevent holes.

3. Read each rnd on Chart from right to left.

### CAP

With A, cast on 54 sts. Divide sts onto 4 double pointed needles, with 13 sts on each of 2 needles and 14 sts on each of the remaining 2 needles. Place marker for beg of rnd. Join by working the first st on the left hand needle with the working yarn from the right hand needle and being careful not to twist sts. Change to B and work in K1, p1 Rib for 1 rnd. Carry color not in use loosely across WS of Cap until next needed.

Continue in K1, p1 Rib, working 5 rnds with A, one rnd with B and 4 rnds with A.

### Begin Chart

Change to St st worked in rnds (k every rnd), beg with Rnd 1, work 6-st rep of Chart around.

Continue to follow Chart, in St st worked in rnds, until all 18 rnds of Chart have been completed.

**Next Rnd:** \*K1 with B, k1 with A; rep from \* around.

Rep last rnd 9 more times.

### Shape Crown (top of Hat)

**Decrease Rnd:** With A, (k2tog) around – 27 sts at the end of this rnd.

With B, knit 2 rnds.

With A, knit 2 rnds.

With B, bind off, leaving a 12 in. (30.5 cm) long yarn tail.

### FINISHING

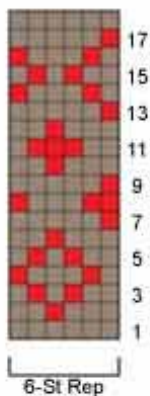
Flatten Cap. With yarn tail, sew bound-off edge at top of Cap closed.

Weave in ends.

#### Stitch Key

■ = A

■ = B



### ABBREVIATIONS / REFERENCES

Click for explanation and illustration

<u>beg = begin(s)(ning)</u>	<u>k = knit</u>
<u>k2tog = knit 2 together</u>	<u>p = purl</u>
<u>rep = repeat(s)(ing)</u>	<u>rnd(s) = round(s)</u>
<u>St st = Stockinette stitch</u>	<u>st(s) = stitch(es)</u>

---

Every effort has been made to have the knitting and crochet instructions accurate and complete. We cannot be responsible for variance of individual knitters and crocheters, human errors, or typographical mistakes.

We want your project to be a success! If you need help with this or any other Lion Brand pattern, e-mail support is available 7 days per week. Just click [here](#) to explain your problem and someone will help you!

**For thousands of free patterns, visit our website [www.LionBrand.com](http://www.LionBrand.com)**

**To order visit our website [www.lionbrand.com](http://www.lionbrand.com) or call: (800) 258-YARN (9276) any time!**

**When in New York City, visit the Lion Brand Yarn Studio where we have the largest selection of our yarns anywhere and over 100 classes and events monthly.**

**34 West 15th Street, NY, NY 10011**

Copyright ©1998-2013 Lion Brand Yarn Company, all rights reserved. No pattern or other material may be reproduced -- mechanically, electronically, or by any other means, including photocopying -- without written permission of Lion Brand Yarn Company.