



Free Knitting Pattern
Lion Brand[®] Wool-Ease[®] Thick & Quick[®]
Cabled Tassel Hat
Pattern Number: L40181



Designed by Lisa Carnahan.

Free Knitting Pattern from Lion Brand Yarn

Lion Brand® Wool-Ease® Thick & Quick® Cabled Tassel Hat

Pattern Number: L40181

SKILL LEVEL: Easy (Level 2)

SIZE: One Size

Finished Circumference About 20 in. (51 cm), will stretch to fit a range of sizes.

CORRECTIONS: None as of Jul 2, 2014. To check for later updates, click [here](#).

MATERIALS

- 640-123 [Lion Brand Wool-Ease Thick & Quick Yarn: Oatmeal](#)

1 Ball

- [Brittany Birchwood Double Pointed Needles - Size 13](#)

- [Lion Brand Split Ring Stitch Markers](#)

- [Lion Brand Cable Needles \(Set of 2\)](#)

- [Lion Brand Large-Eye Blunt Needles \(Set of 6\)](#)

- Additional Materials
4 x 6 in. (10 x 15 cm)
piece of cardboard

**Wool-Ease Thick & Quick (Article #640).*

Solids, Heathers, Twists: 80% Acrylic, 20% Wool

Wheat & Wood: 86% Acrylic; 10% Wool; 4% Rayon

Oatmeal & Barley & Grey Marble: 82% Acrylic; 10% Wool; 8% Rayon

Metallics: 79% Acrylic, 20% Wool, 1% Metallic Poly; package size: Solids, Heathers, Twists,

*Tweeds: 6 oz./170g (106 yd/97 m)
Prints, Stripes: 5 oz./140g (87 yd/80 m)*

Metallics: 5 oz./140g (92 yd/84 m)



GAUGE:

12 sts = about 4 in. (10 cm) in pattern.

When you match the gauge in a pattern, your project will be the size specified in the pattern and the materials specified in the pattern will be sufficient. The needle or hook size called for in the pattern is based on what the designer used, but it is not unusual for gauge to vary from person to person. If it takes you fewer stitches and rows to make your swatch, try using a smaller size hook or needles; if more stitches and rows, try a larger size hook or needles.

Making a Gauge Swatch

STITCH EXPLANATION:

2/2 RC (2 over 2 right cross) Slip 2 sts to cable needle and hold in back, k2, then k2 from cable needle.

3/3 RC (3 over 3 right cross) Slip 3 sts to cable needle and hold in back, k3, then k3 from cable needle.

M1 (make 1) An increase worked by lifting the horizontal strand lying between needles and placing it onto the left needle. Knit this new stitch through the back loop – 1 st increased.

s2kp Slip next 2 sts as if to knit them tog, knit 1, pass the 2 slipped sts up and over the knit

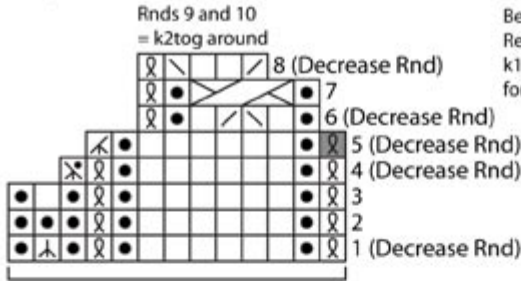
st and off the needle – 2 sts decreased.

ssk (slip, slip, knit) Slip next 2 sts as if to knit, one at a time, to right needle; insert left needle into fronts of these 2 sts and knit them tog – 1 st decreased.

NOTES:

1. Hat is worked in the rnd on double pointed needles.
2. Hat can be worked by following written instructions by reading Chart. When working from Chart, read all rnds of Chart from right to left.

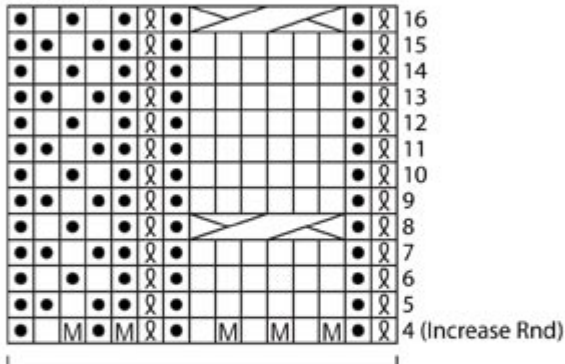
Shape Crown Chart



Begin Rnd 5 as follows:
Remove beg of rnd marker,
k1 tbl, return marker to needle
for new beg of rnd.

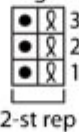
beg over 15-st rep (work on each of 4 needles)

Hat Chart



beg over 10-st rep (work on each of 4 needles)
(increase to 15-st rep)

Ribbing Chart



Key

- knit
- purl
- ⊗ k1 tbl
- ⊘ k2tog (knit 2 stitches together)
- ⊙ k3tog (knit 3 stitches together)
- ⊚ ssk (slip, slip, knit)
- ⊠ s2kp (slip 2, k1, pass slipped sts over)
- ⊡ p3tog (purl 3 stitches together)
- ⊞ make 1
- ⊞ 2/2 RC (2 over 2 right cross)
- ⊞ 3/3 RC (3 over 3 right cross)

HAT

Cast on 40 sts. Divide sts onto 4 needles, with 10 sts on each needle. Place marker for beg of rnd. Join by working the first st on left hand needle with the working yarn from the right hand needle and being careful not to twist sts.

Ribbing

Rnds 1-3: *K1 tbl, p1; rep from * around.

Body

Rnd 4 (Increase Rnd): *K1 tbl, p1, (M1, k1) 3 times, p1, k1 tbl, M1, p1, M1, k1, p1; rep from * around – 60 sts (15 sts on each needle).

Rnd 5: *K1 tbl, p1, k6, p1, k1 tbl, p2, k1, p2; rep from * around.

Rnd 6: *K1 tbl, p1, k6, p1, k1 tbl, p1, (k1, p1) twice; rep from * around.

Rnd 7: Rep Rnd 5.

Rnd 8: *K1 tbl, p1, 3/3 RC, p1, k1 tbl, p1, (k1, p1) twice; rep from * around.

Rnds 9-14: Rep Rnds 5 and 6.

Rnd 15: Rep Rnd 5.

Rnd 16: Rep Rnd 8.

Shape Crown (Top of Hat)

Rnd 1 (Decrease Rnd): *K1 tbl, p1, k6, p1, k1 tbl, p1, s2kp, p1; rep from * around – 52 sts.

Rnd 2: *K1 tbl, p1, k6, p1, k1 tbl, p3; rep from * around.

Rnd 3: *K1 tbl, p1, k6, p1, k1 tbl, p1, k1, p1; rep from * around.

Rnd 4 (Decrease Rnd): *K1 tbl, p1, k6, p1, k1 tbl, p3tog; rep from * around – 44 sts.

Rnd 5 (Decrease Rnd): Remove beg of rnd marker, k1 tbl, return marker to needle for new beg of rnd, *p1, k6, p1, k3tog; rep from * around – 36 sts.

Rnd 6 (Decrease Rnd): *P1, k1, ssk, k2tog, k1, p1, k1 tbl; rep from * around – 28 sts.

Rnd 7: *P1, 2/2 RC, p1, k1 tbl; rep from * around.

Rnd 8 (Decrease Rnd): *K2tog, k2, ssk, k1 tbl; rep from * around – 20 sts.

Rnd 9 (Decrease Rnd): *K2tog; rep from * around – 10 sts.

Rnd 10 (Decrease Rnd): *K2tog; rep from * around – 5 sts.

Cut yarn, leaving a long yarn tail. Thread yarn tail into blunt needle and then through remaining sts, pull to gather. Knot to secure.

FINISHING

Tassel

Wrap yarn around the 6 in. (15 cm) side of cardboard 35 times. Cut an 18 in. (45.5 cm) length and thread, doubled, into blunt needle. Insert needle under all strands at upper edge of cardboard.

Pull tightly and knot securely near strands. Cut yarn loops at lower edge of cardboard. Cut another 18 in. (45.5 cm) long length of yarn and wrap tightly around loops 1 1/2 in. (4 cm) below top knot to form Tassel neck. Knot securely; thread ends into needle and weave ends to center of Tassel. Trim Tassel ends evenly. Tie Tassel to top of Hat.

Weave in ends.

ABBREVIATIONS / REFERENCES	
Click for explanation and illustration	
k = knit	k2tog = knit 2 together
k3tog = knit 3 together	p = purl
p3tog = purl 3 together	rep = repeat(s)(ing)
rnd(s) = round(s)	st(s) = stitch(es)
tbl = through the back loop	

Learn to knit instructions: <http://learnToKnit.LionBrand.com>

Every effort has been made to have the knitting and crochet instructions accurate and complete. We cannot be responsible for variance of individual knitters and crocheters, human errors, or typographical mistakes.

We want your project to be a success! If you need help with this or any other Lion Brand pattern, e-mail support is available 7 days per week. Just click [here](#) to explain your problem and someone will help you!

**For thousands of free patterns, visit our website www.LionBrand.com
To order visit our website www.lionbrand.com or call: (800) 258-YARN (9276) any time!**

When in New York City, visit the Lion Brand Yarn Studio where we have the largest selection of our yarns anywhere and over 100 classes and events monthly.

34 West 15th Street, NY, NY 10011

Copyright ©1998-2013 Lion Brand Yarn Company, all rights reserved. No pattern or other material may be reproduced -- mechanically, electronically, or by any other means, including photocopying -- without written permission of Lion Brand Yarn Company.