



Free Knitting Pattern
Lion Brand® Modern Baby®
Circus Hat
Pattern Number: L40155



Designed by Amy Bahrt

Free Knitting Pattern from Lion Brand Yarn

Lion Brand® Modern Baby®

Circus Hat

Pattern Number: L40155

SKILL LEVEL: Intermediate (Level 3)

SIZE: Child (Multiple Sizes)

Child's Small (Medium, Large)

Finished Circumference About 17 (19, 20) in. (43 (48, 51) cm).

CORRECTIONS: None as of Jun 28, 2014. To check for later updates, click [here](#).

MATERIALS

- 924-130 Lion Brand Modern Baby: Green
1 Ball (A)
- 924-109 Lion Brand Modern Baby: Blue
1 Ball (B)
- 924-113 Lion Brand Modern Baby: Red
1 Ball (C)
- 924-158 Lion Brand Modern Baby: Yellow
1 Ball (D)
- 924-149 Lion Brand Modern Baby: Grey
1 Ball (E)
- Lion Brand Knitting Needles- Size 4 [3.5 mm]
- Lion Brand Knitting Needles- Size 6 [4.00 mm]
- Lion Brand Crochet Hook - Size G-6 (4 mm)
- Lion Brand Large-Eye Blunt Needles (Set of 6)
- Additional Materials
Sewing needle and neutral color sewing thread

**Modern Baby (Article #924). 50% Acrylic, 50% Nylon; package size: 2.60oz/75.00 gr. (173yds/158m) pull skeins*



GAUGE:

20 sts + 28 rows = 4 in. (10 cm) in St st (k on RS, p on WS).

When you match the gauge in a pattern, your project will be the size specified in the pattern and the materials specified in the pattern will be sufficient. The needle or hook size called for

in the pattern is based on what the designer used, but it is not unusual for gauge to vary from person to person. If it takes you fewer stitches and rows to make your swatch, try using a smaller size hook or needles; if more stitches and rows, try a larger size hook or needles.

Making a Gauge Swatch

STITCH EXPLANATION:

French Knot

Thread needle and bring from back to front through knitted piece. Wrap yarn around needle 3 times, insert needle back into knitted piece close to where it emerged. Tighten knot.

PATTERN STITCH

K1, p1 Rib (worked over an even number of sts)

Row 1: *K1, p1; rep from * to end of row.

Row 2: K the knit sts and p the purl sts.

Rep Row 2 for K1, p1 Rib.

NOTES:

1. Hat is worked back and forth in rows and then seamed.
2. Elephant chart is worked in intarsia colorwork. Use a separate ball of yarn for each color section. Twist yarns on WS to prevent holes. Do not carry unused color(s) across WS of work.
3. For intarsia colorwork, wind D into 1 small and 2 larger balls before beginning; wind C into 1 small and 1 large ball before beginning.
4. When working from chart, work in St st (k on RS, p on WS) and read RS rows from right to left and WS rows from left to right.
5. Diamond Chart is worked in stranded colorwork, carrying unused color across WS of work.
6. When you see "- 12 sts" in the instructions, this lets you know how many sts you will have at the end of that specific row.

HAT

With smaller needles and A, cast on 88 (96, 100) sts.

Work in K1, p1 Rib for 8 rows.

Diamond Chart

Note: Diamond Chart is worked in stranded colorwork, carrying unused color across WS of work.

Change to larger needles.

Next Row (RS): Working in St st (k on RS, p on WS) and beg and end where indicated, work 4-st rep of Row 1 of Diamond Chart across.

Continue in St st until 6 rows of Diamond Chart have been completed.

Elephant Chart

Next Row: With D, k35 (39, 41), work Row 1 of Elephant Chart across next 18 sts, with a separate ball of D, k35 (39, 41).

Follow Chart in St st until 18 rows of Elephant Chart have been completed.

With D only, continue in St st until piece measures 4 3/4 (5, 5 1/2) in. (12 (12.5, 14) cm) from beg, end with a WS row as the last row you work.

For Sizes Medium and Large Only

Next Row (RS): With D, (k10 (14), k2tog) 6 times, k4 – 88 (94) sts at the end of this row.

Purl next row.

For Size Large Only

Next Row (RS): With D, (k12, k2tog) 6 times, k4 – 88 sts.

Purl next row.

For All Sizes

Shape Crown (top of Hat)

Dec Row 1 (RS): With D, (k9, k2tog) 8 times – 80 sts at the end of this row.

Rows 2 and 4: With D, purl.

Dec Row 3: With D, (k8, k2tog) 8 times – 72 sts.

Dec Row 5: With C, (k7, k2tog) 8 times – 64 sts.

Rows 6 and 8: With C, purl.

Dec Row 7: With C, (k6, k2tog) 8 times – 56 sts.

Dec Row 9: With D, (k5, k2tog) 8 times – 48 sts.

Rows 10 and 12: With D, purl.

Dec Row 11: With D, (k4, k2tog) 8 times – 40 sts.

Dec Row 13: With C, (k3, k2tog) 8 times – 32 sts.

Row 14: With C, purl.

Row 15: With C, (k2tog) across – 16 sts.

Cut yarn, leaving a long yarn tail. Thread tail through remaining sts and pull to gather. Knot securely.

FINISHING

Elephant Tail

With crochet hook and E, chain 8.

Fasten off.

Sew Tail to Elephant.

Elephant Ear

With crochet hook and C, chain 20.

Fasten off.

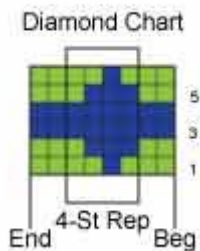
Begin coiling chain into a spiral, securing with sts using sewing needle and thread to shape the chain into a circle.

Sew one edge of Ear to Elephant, leaving remainder of Ear free.

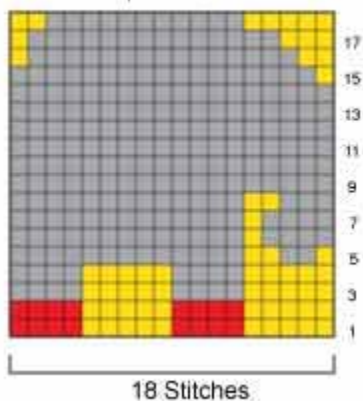
With B, embroider a French knot eye on Elephant.

Seam sides to make Hat.

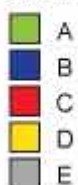
Weave in ends.



Elephant Chart



Stitch Key



ABBREVIATIONS / REFERENCES	
Click for explanation and illustration	
beg = begin(s)(ning)	dec = decreas(e)(s)(ing)
k = knit	k2tog = knit 2 together
p = purl	rem = remain(s)(ing)
rep = repeat(s)(ing)	RS = right side
St st = Stockinette stitch	st(s) = stitch(es)
WS = wrong side	

Learn to knit instructions: <http://learnToKnit.LionBrand.com>

Every effort has been made to have the knitting and crochet instructions accurate and complete. We cannot be responsible for variance of individual knitters and crocheters, human errors, or typographical mistakes.

We want your project to be a success! If you need help with this or any other Lion Brand pattern, e-mail support is available 7 days per week. Just click [here](#) to explain your problem and someone will help you!

For thousands of free patterns, visit our website www.LionBrand.com

To order visit our website www.lionbrand.com or call: (800) 258-YARN (9276) any time!

When in New York City, visit the Lion Brand Yarn Studio where we have the largest selection of our yarns anywhere and over 100 classes and events monthly.

34 West 15th Street, NY, NY 10011

Copyright ©1998-2013 Lion Brand Yarn Company, all rights reserved. No pattern or other material may be reproduced -- mechanically, electronically, or by any other means, including photocopying -- without written permission of Lion Brand Yarn Company.