



Free Knitting Pattern
Lion Brand[®] Wool-Ease[®] Thick & Quick[®]
Tied Cardigan
Pattern Number: L40177



Designed by Mari Lynn Patrick.

Free Knitting Pattern from Lion Brand Yarn

Lion Brand® Wool-Ease® Thick & Quick® Tied Cardigan

Pattern Number: L40177

SKILL LEVEL: Intermediate + (Level 4)

SIZE: Child (Multiple Sizes)

Child's 2 (4, 6, 8)

Finished Chest 26 (29, 32, 34) in. (66 (73.5, 81.5, 86.5) cm)

Finished Length 16 1/2 (20, 24 1/2, 29 1/2) in. (42 (51, 62, 75) cm)

CORRECTIONS: None as of Jul 3, 2014. To check for later updates, click [here](#).

MATERIALS

- 640-099 [Lion Brand Wool-Ease Thick & Quick Yarn: Fisherman](#)
3 5, 6, 8 Balls

- [Brittany Birchwood Double Pointed Needles](#)
- Size 15

- [Lion Brand Crochet Hook](#)
- Size N-13 (9 mm)

- [Lion Brand Cable Needles \(Set of 2\)](#)

- [Lion Brand Stitch Holders](#)

- [Lion Brand Split Ring Stitch Markers](#)

- [Lion Brand Large-Eye Blunt Needles \(Set of 6\)](#)

- Additional Materials
Circular knitting needle size 15 (10 mm), 24 in. (61 cm) long
One button, about 1 in. (25 mm) diameter
Sewing needle and thread

**Wool-Ease Thick & Quick (Article #640).*

Solids, Heathers, Twists: 80% Acrylic, 20% Wool

Wheat & Wood: 86% Acrylic; 10% Wool; 4% Rayon

Oatmeal & Barley & Grey Marble: 82% Acrylic; 10% Wool; 8% Rayon

Metallics: 79% Acrylic, 20% Wool, 1%

Metallic Poly; package size: Solids, Heathers, Twists, Tweeds: 6 oz./170g (106 yd/97 m)

Prints, Stripes: 5 oz./140g (87 yd/80 m)

Metallics: 5 oz./140g (92 yd/84 m)



GAUGE:

10 sts + 14 rows = 4 in. (10 cm) in St st (k on RS, p on WS).

When you match the gauge in a pattern, your project will be the size specified in the pattern and the materials specified in the pattern will be sufficient. The needle or hook size called for in the pattern is based on what the designer used, but it is not unusual for gauge to vary from person to person. If it takes you fewer stitches and rows to make your swatch, try using a smaller size hook or needles; if more stitches and rows, try a larger size hook or needles.

[Making a Gauge Swatch](#)

STITCH EXPLANATION:

2/2 LC (2 over 2 left cross) Slip 2 sts to cable needle and hold in front, k2, then k2 from cable needle.

2/2 RC (2 over 2 right cross) Slip 2 sts to cable needle and hold in back, k2, then k2 from cable needle.

kfb (knit in front and back) Knit next st without removing it from left needle, then k through back of same st – 1 st increased.

LT (Left Twist) Knit 2nd st on left needle through the back loop and leave on left needle, knit first skipped st and slip both sts from needle.

RPT (Right Purl Twist) Purl 2nd st on left needle and leave on left needle, purl first skipped st and slip both sts from needle.

skp Slip 1 as if to knit, knit 1, pass slip stitch over knit stitch – 1 st decreased.

PATTERN STITCHES

Left Cable (worked over 8 sts)

Row 1 (RS): P3, k4, p1.

Row 2: K1, p4, k3.

Row 3: P3, 2/2 LC, p1.

Row 4: K1, p4, k3.

Rep Rows 1-4 for Left Cable.

Right Cable (worked over 8 sts)

Row 1 (RS): P1, k4, p3.

Row 2: K3, p4, k1.

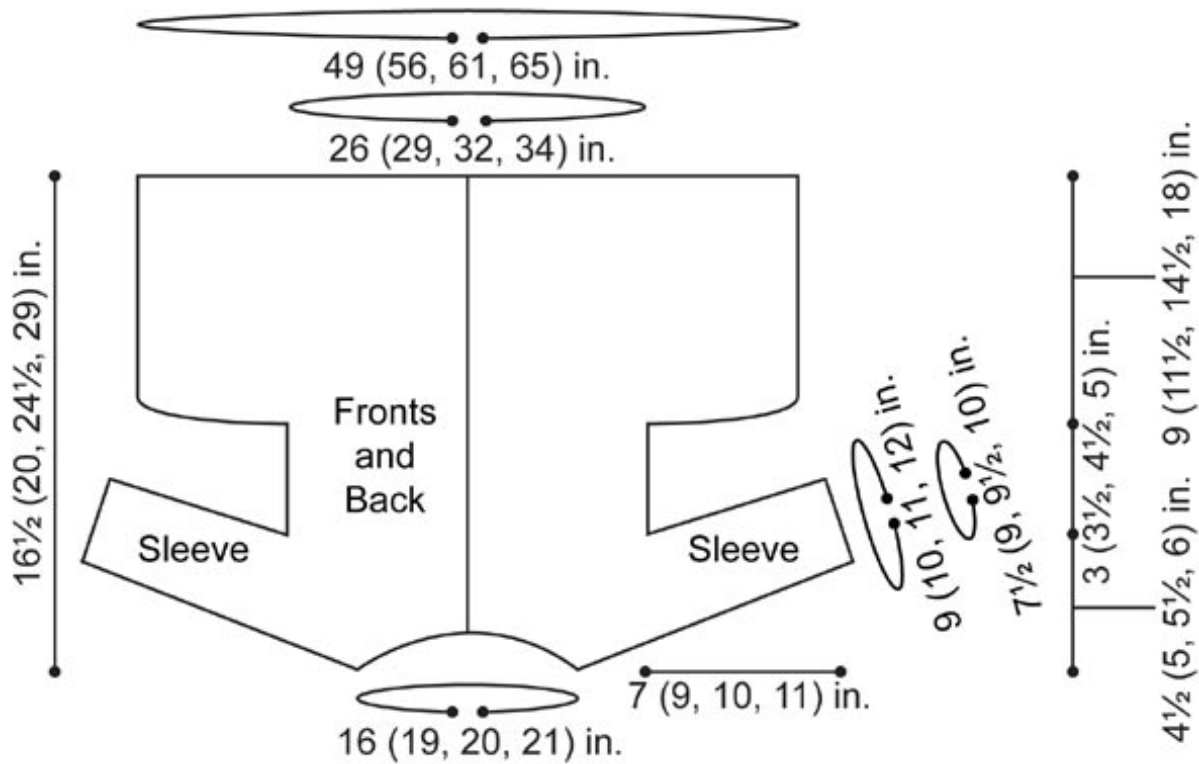
Row 3: P1, 2/2 RC, p3.

Row 4: K3, p4, k1.

Rep Rows 1-4 for Right Cable.

NOTES:

1. Cardigan is worked in one piece, top down to armholes. At armholes, Body and Sleeves are worked separately to lower edge.
2. A circular needle is used to accommodate the large number of sts. Work back and forth on circular needle as if working on straight needles.
3. Sleeves are worked in the round on double pointed needles.
4. Left and Right Cables can be worked from written instructions or by following charts. When working from charts, read RS rows from right to left and WS rows from left to right.
5. End with a WS row means that the last row you work should be a WS row, and the next row that you are ready to work will be a RS row.
6. When you see '- 12 sts' in the instructions, this lets you know how many sts you will have at the end of that specific row.



Stitch Key

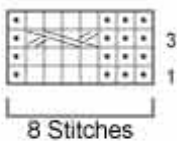
□ = K on RS, p on WS

◻ = P on RS, k on WS

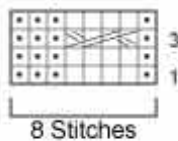
▨ = 2/2 LC

▩ = 2/2 RC

Left Cable



Right Cable



CARDIGAN

With circular needle, cast on 41 (47, 50, 54) sts.

Row 1 (WS): K9 (10, 11, 12) for Right Front, place marker (pm), k5 (6, 6, 7) for Sleeve, pm, k13 (15, 16, 16) for Back, pm, k5 (6, 6, 7) for Sleeve, pm, k9 (10, 11, 12) for Left Front.

Note: The markers placed on Row 1 mark the raglan line of the armhole.

Row 2 (Increase): Beg with Row 1, work Left Cable across 8 sts, knit for St st (k on RS, p on WS) to 1 st before marker, kfb, slip marker (sm), (kfb, knit for St st to 1 st before marker, kfb, sm) 3 times, kfb, knit for St st to last 8 sts, work Right Cable over last 8 sts – 49 (55, 58, 62) sts.

Row 3: Working cables as established over first and last 8 sts and rem sts in St st, work to end of row.

Rows 4-15 (17, 19, 21): Rep Rows 2 and 3 – 97 (111, 122, 134) sts when all increases have been completed.

Divide For Body and Sleeves

Next Row (RS): Keeping in patterns, work 16 (18, 20, 22) sts to first marker for left front, remove marker, slip next 19 (22, 24, 27) sts to a holder for sleeve, remove marker, cast on 3 sts for underarm, work 27 (31, 34, 36) sts to next marker for back, remove marker, slip next 19 (22, 24, 27) sts to a holder for sleeve, remove marker, cast on 3 sts for underarm, work last 16 (18, 20, 22) sts for right front – 65 (73, 80, 86) remaining sts for body of Cardigan.

Body

Working cables as established over first and last 8 sts and rem sts in St st, work 5 (7, 11, 13) rows.

Shape Waist Rib

Next Row (RS): Work 8 sts for cable as established, k1, *p1, k1; rep from * to last 8 (8, 10, 10) sts, k2tog 0 (0, 1, 1) time, work last 8 sts for cable as established – 65 (73, 79, 85) sts.

Next Row: Work 8 sts for cable as established, p1, *k1, p1; rep from * to last 8 sts, work last 8 sts for cable as established.

Eyelet Row: P3 (3, 4, 3), yo, k2tog, work in rib as established over 4 sts, *yo, k2tog, rib 2 sts; rep from * to last 10 (10, 11, 10) sts, yo, k2tog, work in rib as established over 4 sts, k2tog, yo, p2 (2, 3, 2).

Next Row: K3, p4, k1, p1, *k1, p1; rep from * to last 8 sts, k1, p4, k3.

Next Row: Work 8 sts for cable as established, p1, *k1, p1; rep from * to last 8 sts, work last 8 sts for cable as established.

Shape Skirt

Inc Row (WS): K3, pfb in each st to last 3 sts, k3 – 124 (140, 152, 164) sts.

Next Row: P3, knit to last 3 sts, p3.

Next Row: K3, purl to last 3 sts, k3.

Work even as established until skirt measures 5 (7 1/2, 10 1/2, 14) in. (12.5 (19, 26.5, 35.5) cm), end with a RS row as the last row you work.

Twist Cable Panel

Row 1 (WS): K3, p2, k6 (9, 5, 6), (p2, k8) 10 (11, 13, 14) times, p2, k6 (9, 5, 6), p2, k3.

Row 2: P3, LT, p6 (9, 5, 6), (LT, p8) 10 (11, 13, 14) times, LT, p6 (9, 5, 6), LT, p3.

Row 3 K3, RPT, k6 (9, 5, 6), (RPT, p8) 10 (11, 13, 14) times, RPT, k6 (9, 5, 6), RPT, k3.

Rep Rows 2 and 3 until Twist Cable Panel measures about 4 in. (10 cm), end with a WS row as the last row you work.

Next Row (RS): P3, knit to last 3 sts, p3.

Next Row: K3, purl to last 3 sts, k3.

Bind off.

Sleeves (make 2)

With circular needle and beg at center of 3 cast-on underarm sts, pick up and k2 sts across cast-on underarm sts, k19 (22, 24, 27) sts from holder, pick up and k 2 sts across rem cast-on sts – 23 (26, 28, 31) sts.

Divide sts onto 4 double pointed needles as follows: 5 (6, 7, 7) sts on first needle, 6 (6, 7, 8) sts on second needle, 6 (7, 7, 8) sts on third needle and 6 (7, 7, 8) sts on fourth needle.

Pm for beg of rnd.

Knit 5 rnds.

Dec Rnd: Skp, knit to last 2 sts, k2tog – 21 (24, 26, 29) sts.

Continue in St st worked in the rnd (k every rnd) and AT THE SAME TIME, rep Dec Rnd every 6th rnd 1 (1, 1, 2) times more – 19 (22, 24, 25) sts.

Work even until Sleeve measures 6 (8, 9, 10) in. (15 (20.5, 23, 25.5) cm) from Dividing Row.

Purl 3 rnds, k2 rnds.

Bind off.

Rep for second Sleeve.

FINISHING

Tie

With crochet hook, ch 41 (45, 50, 55).

Row 1: Slip st in 2nd ch from hook and in each ch across.

Fasten off.

Thread Tie through eyelets of Eyelet Row.

Buttonloop

With RS facing and crochet hook, join yarn at right front neck edge with a slip st. Ch 5, slip st in same space as joining. Fasten off.

With sewing needle and thread, sew button to left front, opposite buttonloop.

Weave in ends.

ABBREVIATIONS / REFERENCES

Click for explanation and illustration

beg = begin(s)(ning)	ch(s) = chain(s)
dec = decreas(e)(s)(ing)	inc = increas(e)(s)(ing)
k = knit	k2tog = knit 2 together
p = purl	rem = remain(s)(ing)
rep = repeat(s)(ing)	rnd(s) = round(s)
RS = right side	St st = Stockinette stitch
st(s) = stitch(es)	WS = wrong side
yo = yarn over	

Learn to knit instructions: <http://learnToKnit.LionBrand.com>

Every effort has been made to have the knitting and crochet instructions accurate and complete. We cannot be responsible for variance of individual knitters and crocheters, human errors, or typographical mistakes.

We want your project to be a success! If you need help with this or any other Lion Brand pattern, e-mail support is available 7 days per week. Just click [here](#) to explain your problem and someone will help you!

For thousands of free patterns, visit our website www.LionBrand.com

To order visit our website www.lionbrand.com or call: (800) 258-YARN (9276) any time!

When in New York City, visit the Lion Brand Yarn Studio where we have the largest selection of our yarns anywhere and over 100 classes and events monthly.

34 West 15th Street, NY, NY 10011

Copyright ©1998-2013 Lion Brand Yarn Company, all rights reserved. No pattern or other material may be reproduced -- mechanically, electronically, or by any other means, including photocopying -- without written permission of Lion Brand Yarn Company.