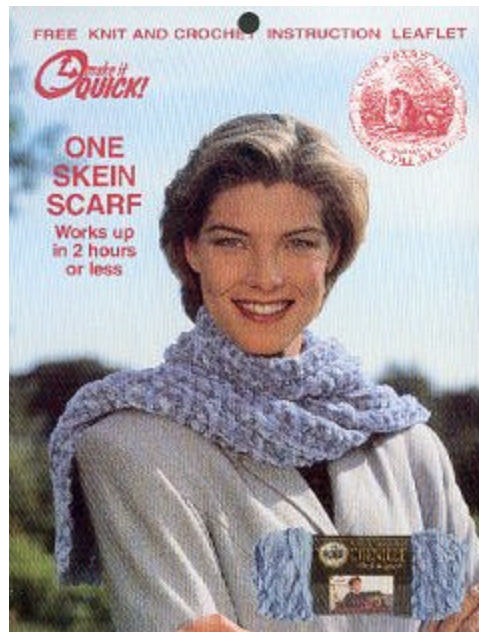




Chenille Thick & Quick One Skein Crocheted Scarf



Size: Approx 7" wide x 54" long.

Materials:

Lion Brand Chenille Thick & Quick, Art. #950 (100 yd. skeins): 1 skein in #108 Dusty Blue or the color of your choice. Crochet hook size N or size needed to obtain gauge.

Gauge: 3 sts = 2" in pat st.

TO INSURE PROPER SIZE, BE SURE TO CHECK YOUR GAUGE.

Pattern Stitch:

Pat Row 1: Sc in first sc, sc in back loop of each sc across to last sc, sc in last sc.

Scarf: Ch 82.

Foundation row: Sc in 2nd ch from hook and in each ch across. Ch 1, turn.

Work pat Row 1 Rep 8 more times. Fasten off. Weave in ends.

For wider Scarf: Work additional rows with additional Lion Brand Chenille Thick & Quick.

For Shawl width: Work additional rows with additional Lion Brand Thick & Quick until piece meas approx 22" or as desired. Or keep going for a most luxurious afghan.

For longer Scarf: Add 3 ch for each additional 2" of length desired to initial ch 82. Then work pat above with additional Lion Brand Chenille Thick & Quick.

ABBREVIATIONS:	
beg = beginning	sc = single crochet
ch = chain	sl st = slip stitch
dec = decrease	st(s) = stitches
hdc = half double crochet	rem = remain(ing)
inc = increase	rep = repeat
	yo = yarn over

Every effort has been made to have the knitting and crochet instructions accurate and complete. We cannot be responsible for variance of individual knitters and crocheters, human errors, or typographical mistakes.

To order call: (800) 258-YARN (9276)

© 1998, 1999, 2000 **Lion Brand Yarn Company**, all rights reserved.

34 West 15th Street, New York, New York 10011

Call TOLL-FREE 1-800-258-YARN

No pattern or other material may be reproduced—mechanically, electronically, or by any other means, including photocopying—without written permission of Lion Brand Yarn Company.