



Free Crochet Pattern
Lion Brand® Microspun
Severin Pullover
Pattern Number: RCPullover



Used with permission. Copyright Robyn Chachula.

Free Crochet Pattern from Lion Brand Yarn

Lion Brand® Microspun

Severin Pullover

Pattern Number: RCPullover

SKILL LEVEL: [Intermediate](#)

SIZE:

Small (Medium, Large, Extra Large) is sized to fit 6 (12, 18, 24) mth with a relaxed fit. Pullover shown is an Extra Large (24 mth size).

Finished chest: 22 (23 1/2, 26, 27 1/2)" (56 [59.5, 66, 70] cm).

Finished Length: 11 1/4 (11 1/4, 13 1/2, 13 1/2)" (28.5 [28.5, 34.5, 34.5] cm).

CORRECTIONS: None as of Dec 14, 2010. To check for later updates, click [here](#).

MATERIALS

- 910-150 [Lion Brand Microspun Yarn: Sterling](#)
3 4, 4, 5 Balls MC
- 910-100 [Lion Brand Microspun Yarn: Lily White](#)
1 1, 1, 1 Ball CC
- [Lion Brand Crochet Hook - Size H-8](#)
- [Large-Eye Blunt Needles \(Set of 6\)](#)
- Additional Materials
spray bottle with water and straight pins for blocking
12 inches (30.5 cm) of 1/2 inch (1.3 cm)-wide grosgrain ribbon
four 1/2 inch (13 mm) buttons
4 size 2/0 sew-on snaps
matching sewing thread and handsewing needle

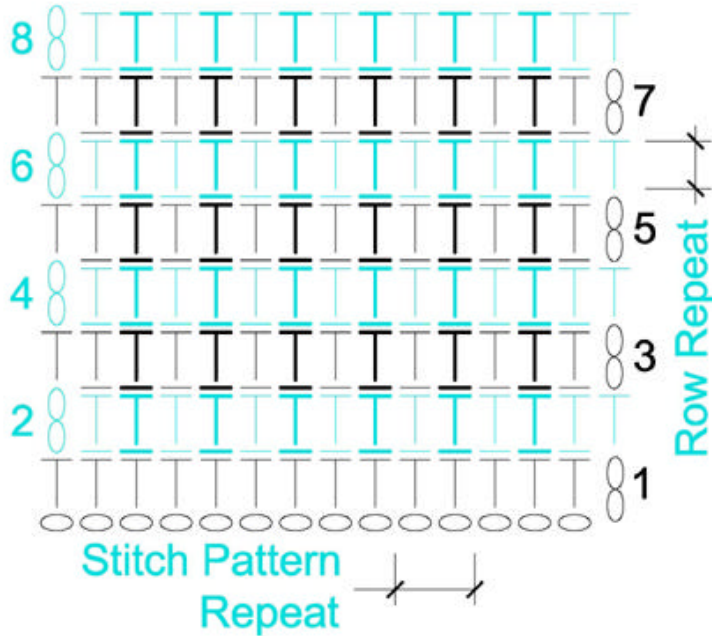
GAUGE:

20 sts (10 SR) by 14 rows (14 RR) = 4" x 4 1/4" (10 x 11 cm) in waffle stitch pattern (wsp). BE SURE TO CHECK YOUR GAUGE. When you match the gauge in a pattern, your project will be the size specified in the pattern and the materials specified in the pattern will be sufficient. If it takes you less stitches and rows to make a 4 in. [10 cm] square, try using a smaller size hook or needles; if more stitches and rows, try a larger size hook or needles.

STITCH EXPLANATION:

Front Post double crochet (FPdc): Yo, insert hook from front to back to front, yo, pull up a lp, yo, draw through 2 lps on hk, yo, draw through last 2 lps on hook.

Back Post double crochet (BPdc): Yo, insert hook from back to front to back, yo, pull up a lp, yo, draw through 2 lps on hk, yo, draw through last 2 lps on hook.



Waffle Stitch Pattern

Waffle Stitch Pattern (wsp)

See Waffle Stitch Pattern Diagram for assistance.

Ch 22.

Row 1 (RS): Hdc in 3rd ch from hook and in each across, turn-21 hdc, 10 SR.

Row 2: Ch 2 (counts as hdc), hdc-blip in next hdc, *hdc-flip in next hdc, hdc-blip in next hdc, rep from * across to end, hdc in top of tch, turn.

Rep Row 2 to desired length.

BACK

See stitch diagram A for assistance.

Ch 56 (60, 66, 70) with MC.

Row 1 (WS): Hdc in 3rd ch from hook (sk ch counts as hdc) and in ea ch across, turn-55 (59, 65, 69) hdc.

Cont in wsp for 15 (15, 19, 19) more rows.

Armhole Opening:

Row 1: Sl st in next 6 (8, 8, 10) sts, ch 2 (count as hdc), cont in wsp across to last 6 (8, 8, 10) sts, hdc in next hdc, leave rem sts unworked, turn-45 (45, 51, 51) hdc.

Cont in wsp for 11 (11, 15, 15) more rows.

Neck Opening:

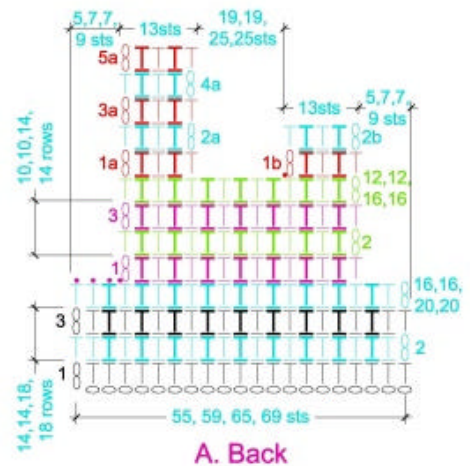
Row 1a: Ch 2, cont in wsp for 11 sts, hdc in next st, leave rem sts, unworked, turn. Cont in wsp for 4 more rows, fasten off.

Opposite Shoulder:

Join yarn 20 (20, 26, 26) sts from end of Row 1a with sl st.

Row 1b: Ch 2 (counts as hdc), cont in wsp across to end, hdc in last hdc, turn.

Row 2b: Cont in wsp across, fasten off.



FRONT

See stitch diagrams B and C for assistance.

Ch 57 (61, 67, 71) with MC.

Row 1 (WS): Hdc in 3rd ch from hook (sk ch counts as hdc) and in ea ch across, turn-56 (60, 66, 70) hdc.

Row 2: Ch 2 (counts as hdc), cont in wsp across for 5 (7, 7, 9) sts, change to CC, fpdc around next hdc, change to MC, (sk st behind prev st), hdc in next 3 sts, change to CC, sk next 2 hdc, fpdc around next 2 hdc, fpdc around last 2 hdc, change to MC, hdc in next 3 sts, change to CC, fpdc around next hdc, change to MC, starting with hdc-blp, cont in wsp across to end, turn.

Row 3: Cont in wsp across to last 18 (20, 20, 22) sts, bpdc around all fpdc with CC and hdc in all hdc with MC for next 12 sts, starting with hdc-blp, cont in wsp across to end, turn.

Row 4: Ch 2 (counts as hdc), cont in wsp across for 5 (7, 7, 9) sts, hdc in next 2 sts, change to CC, fpdc2tog around prev dc and next dc (sk 3 hdc), fpdc around next dc, change to MC, hdc in next 4 dc, change to CC, fpdc around next dc, fpdc2tog around next 2 dc, change to MC, sk 2 hdc, hdc in next 2 sts, starting with hdc-blp, cont in wsp across to end, turn.

Rep Row 3

Row 6: Ch 2 (counts as hdc), cont in wsp across for 5 (7, 7, 9) sts, change to CC, fpdc around next 2 dc (sk 2 hdc), change to MC, hdc in next 2 dc, hdc in next hdc, change to CC, fpdc around prev and next dc, change to MC, sk 2 hdc, hdc in next hdc, hdc in next 2 dc, change to CC, fpdc around prev dc and next dc, change to MC, starting with hdc-blp, cont in wsp across to end, turn.

Rep Row 3

Row 8: Ch 2 (counts as hdc), cont in wsp across for 5 (7, 7, 9) sts, change to CC, fpdc around next 2 dc, change to MC, sk hdc behind dc, hdc in next 3 hdc, change to CC, sk 1 dc, fpdc around next dc, fpdc around sk dc, change to MC, hdc in next 3 hdc, change to CC, fpdc around next 2 dc, change to MC, starting with hdc-blp, cont in wsp across to end, turn.

Rep Row 3

Row 10: Ch 2 (counts as hdc), cont in wsp across for 5 (7, 7, 9) sts, hdc in next 2 dc, change to CC, fpdc around first dc, fpdc2tog around second dc and next dc, change to MC, sk 2 hdc, hdc in next 2 dc, hdc in next hdc, change to CC, fpdc2tog around prev and next dc, fpdc around next dc, change to MC, sk 2 hdc, hdc in next 2 dc, starting with hdc-blp, cont in wsp across to end, turn.

Rep Row 3

Row 12: Ch 2 (counts as hdc), cont in wsp across for 5 (7, 7, 9) sts, change to CC, fpdc around next dc, change to MC, sk hdc behind dc, hdc in next hdc, hdc in next 2 dc, change to CC, fpdc around prev and next dc, fpdc around next 2 dc, change to MC, sk 4 hdc, hdc in next 2 dc, hdc in next hdc, change to CC, fpdc around prev dc, change to MC, starting with hdc-blp, cont in wsp across to end, turn.

Rep Row 3

Row 14: Ch 2 (counts as hdc), cont in wsp across for 5 (7, 7, 9) sts, change to CC, fpdc around next dc, change to MC, hdc in next 3 hdc, change to CC, sk next 2 dc, fpdc around next 2 dc, fpdc around prev 2 dc, change to MC, hdc in next 3 hdc, change to CC, fpdc around next dc, change to MC, starting with hdc-blp, cont in wsp across to end, turn.

Row 15: Rep Row 3.

Row 16: Rep Row 14.

(L/ XL Only) Rep Rows 3-6.

Armhole Opening:

Row 1: Sl st in next 6 (8, 8, 10) sts, ch 2 (count as hdc), cont in wsp and cable patt (see stitch diagram B) across to last 6 (8, 8, 10) sts, hdc in next hdc, leave rem sts unworked, turn.

Cont in wsp and cable patt for 6 (6, 10, 10) more rows.

Neck Opening:

Row 1a: Ch 2, cont in cable patt for 12 sts, wsp in next 3 sts, sc in next st, sl st in next st, leave rem sts, unworked, turn.

Row 2a: Sk sl st, sl st in sc, sc in next hdc, hdc-flp in next hdc, hdc-blp in next hdc, cont in cable patt for 12 sts, hdc in top of tch, turn.

Row 3a: Ch 2, cont in cable patt for 12 sts, hdc in next hdc, sc in next hdc, turn.

Row 4a: Sl st in sc, sl st in next hdc, ch 2 (counts as hdc), cont in cable patt for 12 sts, hdc in top of tch, turn.

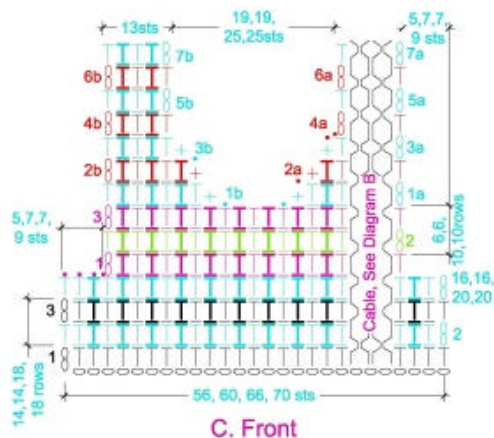
Cont in cable patt for 3 more rows, fasten off.

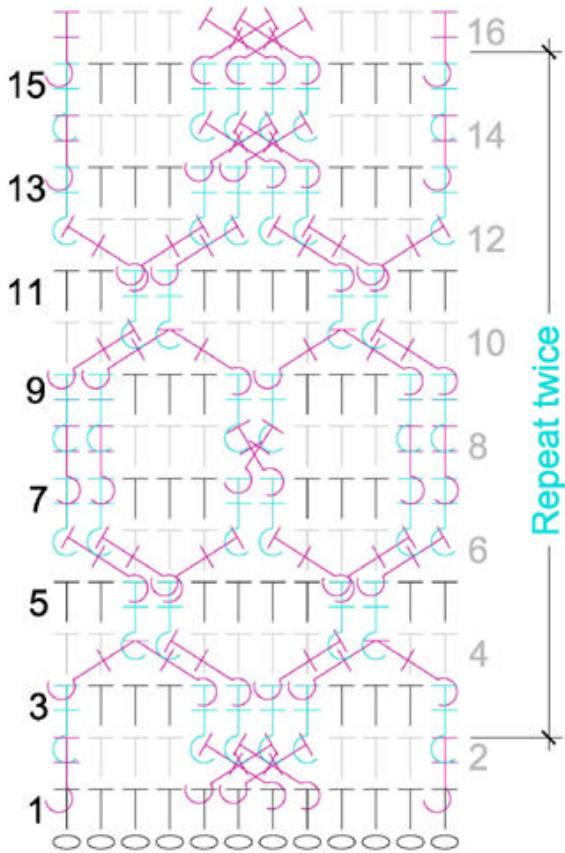
Opposite Shoulder:

Join yarn 12 (12, 18, 18) sts from end of Row 1a with sl st.

Row 1b: Sc in next hdc, starting with hdc-blp, cont in wsp across to end, turn.

Follow stitch diagram C for rem 6 rows, fasten off.





B. Cable Diagram

SLEEVE (Make 2)

See stitch diagram D for assistance.

Ch 30 (30, 36, 36) with MC.

Row 1 (WS): Hdc in 3rd ch from hook (sk ch counts as hdc) and in ea ch across, turn-29 (29, 35, 35) hdc.

Cont with wsp for 1 (1, 2, 2) rows.

Row 3 (3, 4, 4): Ch 2 (counts as hdc), hdc in first hdc, cont in wsp across, 2 hdc in top of tch, turn-31 (31, 37, 37) hdc.

Cont with wsp for 3 (3, 2, 2) rows.

Rep prev 4 (4, 3, 3) rows 4 (4, 6, 6) more times.

Rep Row 3 (3, 4, 4) once.

Cont with wsp for 2 (2, 3, 3) rows-41 (41, 51, 51) hdc.

Arm Cap:

See stitch diagram E for assistance.

Row 1: Sl st in next 6 (6, 9, 9) sts, ch 2 (counts as hdc), cont in wsp across to last 6 (6, 9, 9) hdc in next hdc, turn-31 (31, 35, 35) hdc.

Row 2: Ch 1, sc in next hdc, starting with hdc-flip, cont in wsp across, sc in top of tch, turn-29 (29, 33, 33) hdc.

Row 3: Sl st in sc, sc in hdc, cont in wsp across to last hdc, sc in last hdc, turn-27, (27, 31, 31) hdc.

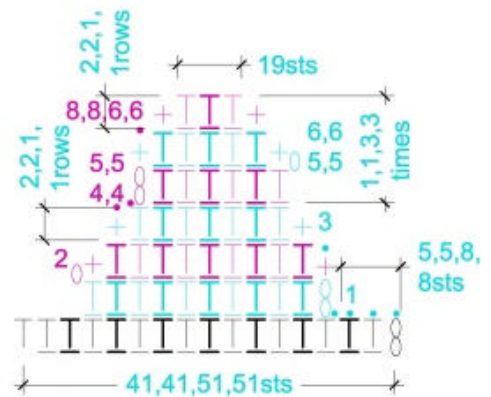
(S/M only) Rep Row 3 once-25 (25) hdc.

Row 5 (5, 4, 4): Sl st in sc, sl st in hdc, ch 2 (counts as hdc), cont in wsp across to end, turn.

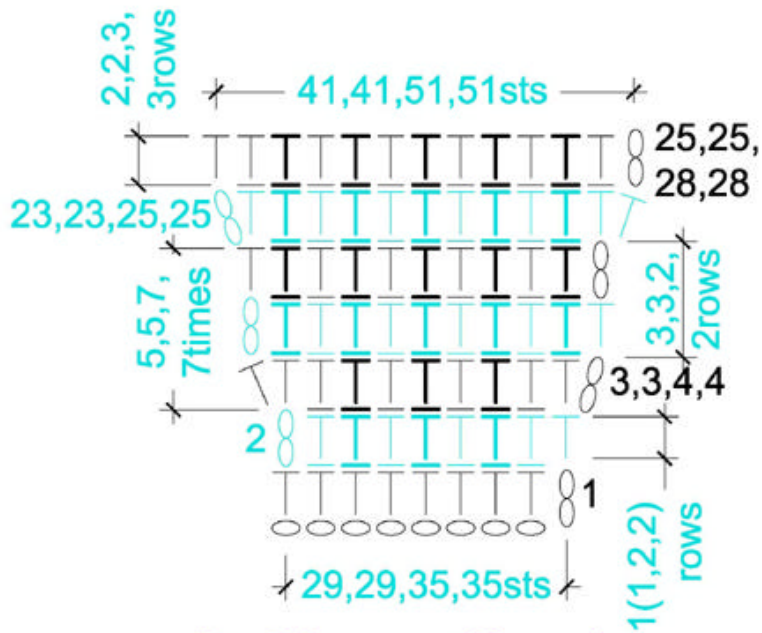
Rep Row 2 once, Rep Row 3 twice (twice, once, once)-19 (19, 27, 27) hdc.

(S/M only) fasten off.

(L, XL only) Rep Rows 4-6 twice more, fasten off-19 (19) hdc.



E. Cap Shaping



D. Sleeve Shaping

Finishing

BLOCKING AND SEAMING

Pin body panels and sleeves to schematic size. Spritz with water and allow to dry. Pin right sides of Front and Back together. Sl st across right shoulder (going through both fabrics at the same time). Leave left shoulder (the longer shoulder on the Back panel) open for neck opening and snaps. Whipstitch side seams together. Pin right sides of Sleeves and body together. Whipstitch arm and side seams together with leftover yarn. Turn right side out.

CUFFS

Join MC to edge of sleeve, ch 9.

Row 1: Sc in 2nd ch from hook and in ea ch across, sl st in next 2 sts on sleeve (first sl st joins ribbing to sleeve, second counts as a t-ch), turn-8 sc.

Row 2: Sk sl sts, sc-blp in each sc across, turn.

Row 3: Ch 1, sc-blp in ea sc across, sl st in next 2 sts on sleeve, turn.

Rep Rows 2-3 evenly around sleeve, fasten off, weave in ends. With tapestry needle, whipstitch ribbing seams together.

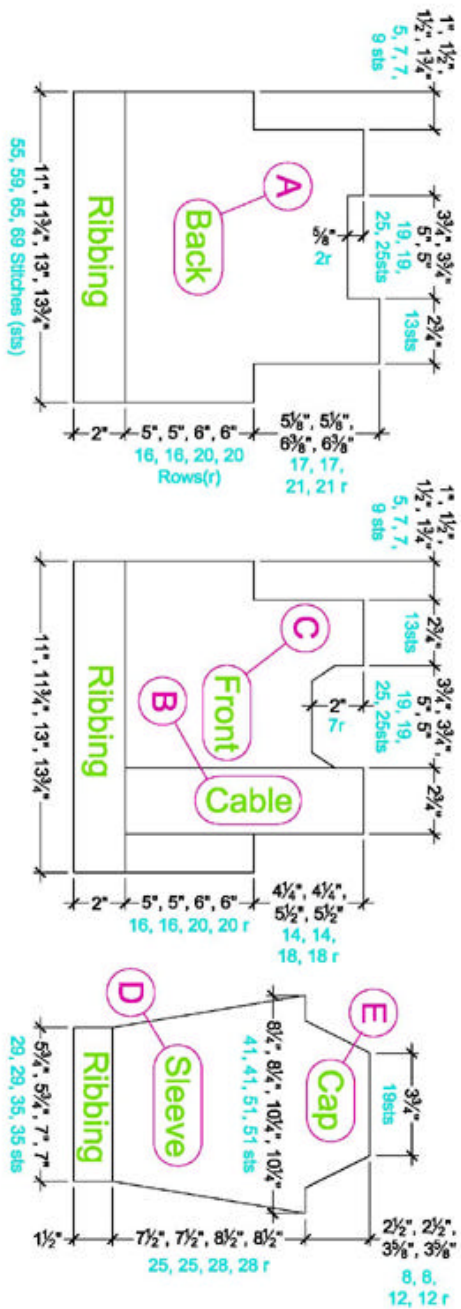
BOTTOM RIBBING

Join MC to edge of body, ch 13. Cont with Cuff directions.

TURTLENECK

Join MC to edge of neck, ch 11. Cont with Cuff directions. Do not whipstitch together.

Cut grosgrain ribbon in half and fold ends down so that ribbon measures length of shoulder seams. With handsewing need and thread, sew one ribbon to inside of front shoulder seam. Sew other ribbon to top of back shoulder seam. Sew buttons evenly down turtleneck and shoulder on front. Sew snaps to opposite side of fabric, directly behind buttons.



Learn to crochet instructions: <http://learnToCrochet.LionBrand.com>

Every effort has been made to have the knitting and crochet instructions accurate and complete. We cannot be responsible for variance of individual knitters and crocheters, human errors, or typographical mistakes.

**Microspun* (Article #910) is a super-soft sport-weight micro-fiber acrylic yarn. It comes in 2.5 oz./70g (168yd/154m) balls



We want your project to be a success! If you need help with this or any other Lion Brand pattern, e-mail support is available 7 days per week. Just click [here](#) to explain your problem and someone will help you!

For thousands of free patterns, visit our website www.LionBrand.com
 To order visit our website www.lionbrand.com or call: (800) 258-YARN (9276) any time!

Copyright ©1998-2009 Lion Brand Yarn Company, all rights reserved. No pattern or other material may be reproduced -- mechanically, electronically, or by any other means, including photocopying -- without written permission of Lion Brand Yarn Company.