



**Free Crochet Pattern**  
**Lion Brand® Jiffy®**  
**All-American Granny Square Throw**  
**Pattern Number:** [cjif-AAmericanGrannySquareThrow](#)



# Free Crochet Pattern from Lion Brand Yarn

## Lion Brand® Jiffy®

### All-American Granny Square Throw

Pattern Number: cjif-AAmericanGrannySquareThrow

**SKILL LEVEL:** [Intermediate \(Level 3\)](#)

**SIZE:** One Size

49 inches x 72 inches

**CORRECTIONS:** (applied May 8, 2012)

#### SOLID COLOR SQUARES - Make 104 with A and 24 with B

...

**Rnd 3** Turn work and slip st in first ch-2 space, ~~ch 3~~, ch 3, 2 dc in same space, \* ch 1, 3 dc in next ch-1 space, ch 1, (3 dc, ch 2, 3 dc) in next corner space, repeat from \* twice more, ch 1, 3 dc in next space, ch 1, 3 dc in first corner space, ch 2. Join to top of ch-3. Fasten off.

#### MATERIALS

- 450-111 [Lion Brand Jiffy](#)

Yarn: [Heather Blue](#)

11 Balls (A)

- 450-099 [Lion Brand Jiffy](#)

Yarn: [Fisherman](#)

6 Balls (B)

- 450-114 [Lion Brand Jiffy](#)

Yarn: [True Red](#)

3 Balls (C)

- [Lion Brand Crochet Hook -](#)

[Size J-10 \(6 mm\)](#)

- [Lion Brand Large-Eye Blunt](#)

[Needles \(Set of 6\)](#)

*\*Jiffy (Article #450). 100% Acrylic; package size: **Solids (except 151 Dusty Grey):** 3 oz./85g; 135 yd/123m balls **Multi (plus 151 Dusty Grey):** 2.5 oz./70g; 115 yd/103m balls*



#### GAUGE:

Each square measure 4½ inches (11 cm) across. When you match the [gauge](#) in a pattern, your project will be the size specified in the pattern and the materials specified in the pattern will be sufficient. The needle or hook size called for in the pattern is based on what the designer used, but it is not unusual for gauge to vary from person to person. If it takes you fewer stitches and rows to make your swatch, try using a smaller size hook or needles; if more stitches and rows, try a larger size hook or needles.

[Making a Gauge Swatch](#)

#### SOLID COLOR SQUARES - Make 104 with A and 24 with B

Ch 6. Join with slip st to form ring.

**Rnd 1 (RS)** Ch 3 (counts as first dc), 2 dc in ring, ch 2, (3 dc in ring, ch 2) 3 times. Join with slip st to top of ch-3.

**Rnd 2** Turn work and slip st in first ch-2 space, ch 3, 2 dc in same space, \*ch 1, (3 dc, ch 2, 3 dc) in next ch-2 space (corner made); repeat from \* twice more, ch 1, 3 dc in first space, ch 2 and join to top of ch-3 to complete first corner.

**Rnd 3** Turn work and slip st in first ch-2 space, ch 3, 2 dc in same space, \*ch 1, 3 dc in next ch-1 space, ch 1, (3 dc, ch 2, 3 dc) in next corner space, repeat from \* twice more, ch 1, 3 dc in next space, ch 1, 3 dc in first corner space, ch 2. Join to top of ch-3. Fasten off.

#### TWO-COLOR SQUARES - Make 48 with B and C

With C, ch 6. Join with slip st to form ring. **Note** To change colors within rnd, drop color not in use on wrong side of work. Do not work over it or fasten off unless specified.

**Rnd 1 (RS)** Ch 3 (counts as first dc), 2 dc in ring, ch 2, 3 dc in ring, ch 1, drop C; attach B and with B, ch 1, (3 dc in ring, ch 2) twice. Join with slip st to top of ch-3.

**Rnd 2** Turn work, slip st in first space, ch 3, 2 dc in same space, ch 1, (3 dc, ch 2, 3 dc) in next space, ch 1, 3 dc in next space, ch 1, drop B; pick up C and with C, ch 1, 3 dc in same space, ch 1, (3 dc, ch 2, 3 dc) in next space, ch 1, 3 dc in

first space, ch 2 and join to top of ch-3 to complete first corner.

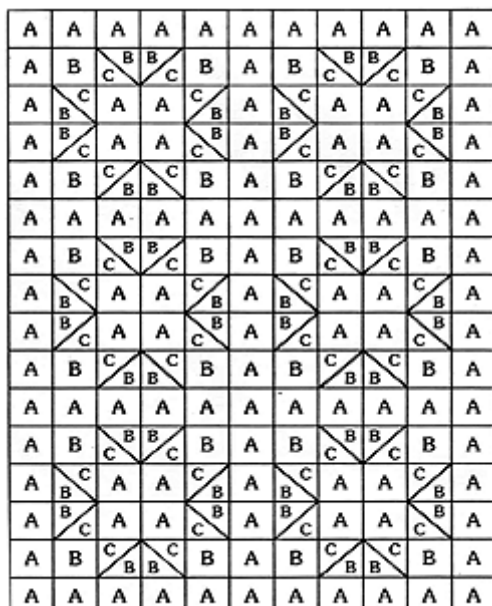
**Rnd 3** Turn work, slip st in first space, ch 3, 2 dc in same space, \*ch 1, 3 dc in next space, ch 1, (3 dc, ch 2, 3 dc) in next corner space, ch 1, 3 dc in next space, ch 1, 3 dc in next corner space \*\*, ch 1, drop C; pick up B and with B, ch 1, 3 dc in same corner space, repeat from \* to \*\*, ch 2 and join to top of ch-3 to complete first corner. Fasten off B and C.

## FINISHING

Weave in yarn ends. Lay out squares, following diagram and carefully placing 2-color squares to form star points as shown. Matching stitches, sew adjoining edges of squares together, through back loops only, with matching yarn.

### Edging

With right side of afghan facing you, using A, crochet a row of sc around edge, working 3 sc at each corner.



[Click to enlarge](#)

### ABBREVIATIONS / REFERENCES

Click for explanation and illustration

ch(s) = chain(s)

dc = double crochet

rnd(s) = round(s)

RS = right side

sc = single crochet

st(s) = stitch(es)

Learn to crochet instructions: <http://www.lionbrand.com/learn/how-to-crochet>

Every effort has been made to have the knitting and crochet instructions accurate and complete. We cannot be responsible for variance of individual knitters and crocheters, human errors, or typographical mistakes.

We want your project to be a success! If you need help with this or any other Lion Brand pattern, e-mail support is available 7 days per week. Just click [here](#) to explain your problem and someone will help you!

**For thousands of free patterns, visit our website [www.LionBrand.com](http://www.LionBrand.com)**

**To order visit our website [www.lionbrand.com](http://www.lionbrand.com) or call: (800) 258-YARN (9276) any time!**

**When in New York City, visit the Lion Brand Yarn Studio where we have the largest selection of our yarns anywhere and over 100 classes and events monthly.**

**34 West 15th Street, NY, NY 10011**

Copyright ©1998-2016 Lion Brand Yarn Company, all rights reserved. No pattern or other material may be reproduced -- mechanically, electronically, or by any other means, including photocopying -- without written permission of Lion Brand Yarn Company.