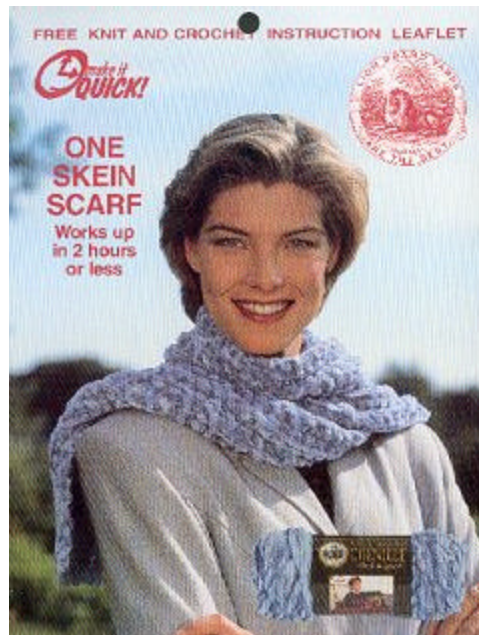




Chenille Thick & Quick One Skein Knitted Scarf



Size: Approx 7" wide x 60" long.

Materials: Lion Brand Chenille Thick & Quick, Art. #950 (100 yd. skeins): 1 skein in #108 Dusty Blue or the color of your choice. Knitting needles size 11 or size needed to obtain gauge.

Gauge: 2 sts = 1" in pat st. TO INSURE PROPER SIZE, BE SURE TO CHECK YOUR GAUGE.

Pattern Stitch:

Row 1 (WS): K1b, p1b, *k1b, k 1, p1b, p 1*, rep from * to * once for scarf (or to last 4 sts for other widths), on last 4 sts, k1b, k 1, p1b, k1b.

Row 2 (RS): K2b, p 1, p1B, *k 1, k1b,p 1, p1b*, rep from * to * once for scarf (or to last 2 sts for other widths), on last 2 sts, k2b.

Scarf: Loosely cast on 14 sts. Work in pat st for 60". Bind off loosely in pat.

For wider scarf: Add sts in multiples of 4 (2").

For shawl width (23"): Add 32 sts for a total of 46 sts and work with additional Lion Brand Chenille Thick & Quick. Or keep going for a most luxurious throw.

ABBREVIATIONS:	
beg = begin(ning)	p = purl
dec = decreas(e)(s)(ing)	p1b = purl through the back loop
dpn = double-pointed needle	rem = remain(s)(ing)
inc = increas(e)(s)(ing)	rep = repeat
k = knit	RS = right side
k1b = knit through the back loop	St st = stockinette stitch
meas = measure(s)	st(s) = stitch(es)
ndl(s) = needle(s)	WS = wrong side

Every effort has been made to have the knitting and crochet instructions accurate and complete. However, we cannot be responsible for variance of individual knitters and crocheters, human errors, or typographical mistakes.

© 1998, 1999, 2000 **Lion Brand Yarn Company**, all rights reserved.
 34 West 15th Street, New York, New York 10011
 Call TOLL-FREE 1-800-258-YARN

No pattern or other material may be reproduced—mechanically, electronically, or by any other means, including photocopying—without written permission of Lion Brand Yarn Company.