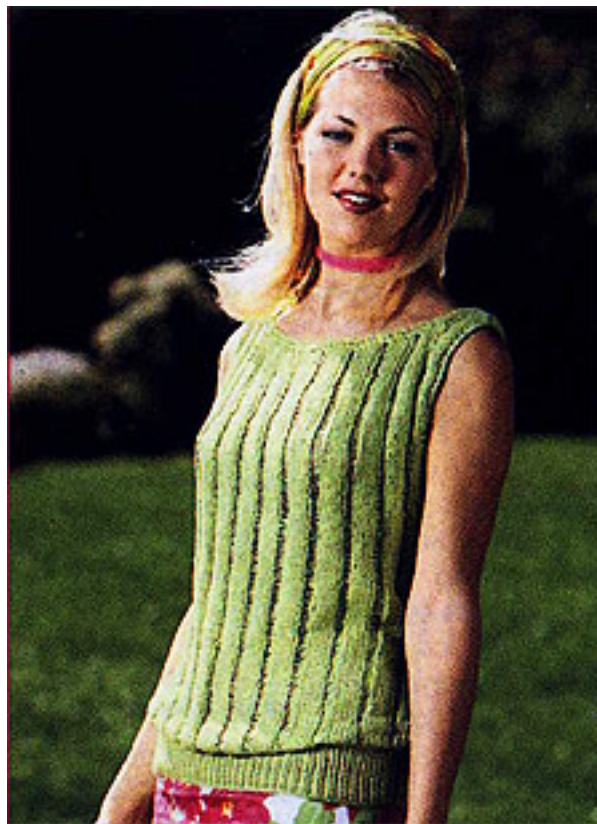




Lion Brand Microspun Drop Stitch Knitted Tank Top



LION BRAND® MICROSPUN DROP STITCH KNIT TANK TOP

INTERMEDIATE

SIZE

Directions are for Size Medium

Finished chest size 44" (loosely fitting garment)

MATERIALS

- LION BRAND Microspun (Art #910) 2 1/2 oz balls: 4 balls #194 Lime or color of your choice
- Needles Size 5 (3.75 mm) and 7 (4.50 mm) OR SIZE TO OBTAIN GAUGE
- Crochet hook Size H-8 (5.00 mm)
- Stitch holder

GAUGE

18 sts +26 rows = 4" in St st (k on RS, p on WS) on larger needles; 5 St sts and 1 dropped st = 1.6" with larger needles. BE SURE TO CHECK YOUR GAUGE.

NOTE

Stitches are not dropped until they are ready to be bound-off. A dropped stitch creates a half inch gap between 2 stitches. In order to maintain that gap, you must create 2 stitches out of the strand as follows:

To bind off over one dropped st (Insert left needle under strand left by dropped stitch and knit that stitch through back loop to make 1 stitch, then bind it off) 2 times—the 2 stitches created are not counted as an increase. Before dropping the stitch on the left needle, there must be 1 stitch remaining from previous bind-off on the right needle.

BACK

With size 7 needles, cast on 83 sts. Work in St st for 9", end WS. **Shape armholes** Bind off 3 sts at beg of next 2 rows. **Next Row (RS)** Bind off 3 sts as foll: Bind off first st, drop the next st all the way down to the bottom of piece, bind off over the one dropped st as above (see Note), k across row. **Next Row (WS)** Bind off as for previous armhole except as to p, p across row. Bind off 2 sts at beg of next 2 rows—67 sts. Work even until armholes measure 8", end WS.

Shape neck: Next Row (RS) K across 7 sts for first shoulder and place on holder; bind off across center 53 sts, binding off first 3 sts as foll: Bind off first st, drop the next st all the way down piece, bind off over the one dropped st as above (see Note) *bind off 4 sts, drop the next st and bind off over it; rep from *, end bind off 2 sts, k across rem 7 sts for second shoulder. Cont on these 7 sts in St st for 2", end WS. Bind off 2 sts, drop next st and bind off over the one dropped st as above (see Note), bind off rem sts. Work other shoulder to correspond.

FRONT

Work same as Back until armholes measure 2 1/4", end WS – 67 sts. **Shape neck as follows** Knit 26 st, bind off 1 st, drop the next st and bind off over it, bind off 5, drop the next st and bind off over it, bind off 5, drop the next stitch and bind off over it, bind off 1. Knit to the end, purl back, leaving rem 26 st on holder.

Cont shaping neck edge as follows: Rows 1-24

Row 1 Bind off 3 sts, knit to the end.

Row 2 (and all even rows) Purl.

Row 3 Bind off 1 st, drop the next stitch and bind off over it, bind off 1.

Row 5 Bind off 3 sts.

Row 7 Bind off 1 st, drop the next st and bind off over it.

Row 9 Bind off 2 sts.

Row 11 Bind off 1 st.

Row 13 Bind off 1 st.

Row 15 Bind off 1 st.

Row 17 K.

Row 19 Bind off 1 st, drop next st and bind off over it.

Row 21 Bind off 1 st.

Cont in St st for 30 rows

Bind Off Row Bind off 3 sts, drop the next and then bind over, bind off rem sts.

To shape 2nd side, place sts back on needle, attach yarn, rev shaping by binding off on WS and knitting the even numbered rows.

FINISHING

Lower borders With RS facing and size 5 needles, pick up and k 83 sts evenly across lower edge. Work in k1, p1 rib for 3". Bind off in rib. Sew Front to Back at shoulders and sew side seams. **Neck edge** With RS facing, join yarn with a sl st at shoulder seam. Using crochet hook, work evenly around neck edge: 1 rnd of 124 sc (working from right to left), then 1 rnd of rev sc (working from left to right). Fasten off. **Armhole edge** With RS facing, join yarn with a sl st at armhole seam and work evenly around armhole edge: 1 rnd of 80 sc, then 1 rnd of rev sc. Fasten off.

ABBREVIATIONS

beg = begin(ning)

cont = continu(e)(ing)

fol = follow(s)(ing)

k = knit

p = purl

rem = remain(s)(ing)

rep = repeat

rev sc = reverse single crochet

rnd(s) = round(s)

RS = right side

sc = single crochet

sl st = slip stitch
st(s) = stitch(es)
St st = stockinette stitch
WS = wrong side