



**LION BRAND®
 HOMESPUN®
 KNITTED
 PINWHEEL AFGHAN**



LION BRAND® HOMESPUN® KNITTED PINWHEEL AFGHAN

Item #1216A

BEGINNER

SIZE

Approximately 60" square

MATERIALS

- LION BRAND Homespun:
 - 4 skeins #309 Deco (MC)
 - 2 skeins #303 Mission (A)
 - 4 skeins #307 Antique (B)
 - 1 skein #302 Colonial (C)
 - 2 skeins #304 Country (D) or colors of your choice
- Size 8 (5 mm) knitting needles OR SIZE TO OBTAIN GAUGE

GAUGE

17 sts = 4 3/4" (12 cm) wide and 20 rows = 4" (10 cm) long over St st (k on RS, p on WS). BE SURE TO CHECK YOUR GAUGE.

NOTE

All SQUARES are worked in St st (k on RS, p on WS); INSIDE and OUTSIDE BORDERS are worked in garter st (k every row).

ASSEMBLY NOTE

When sewing the solid MC squares of every size, make sure they all face the same direction.

AFGHAN

CENTER STAR SQUARES

Each Center Star Square is 5" x 5" and is worked as foll: Cast on 18 sts (in color indicated on chart), work 24 rows of chart in St st, bind off as per Row 25 of chart. Working as above and according to charts, work 4 squares over Chart 1, 4 squares over Chart 2, 4 squares over Chart 3, and 4 squares solid in MC (cast on 18 sts, work 24 rows in St st, bind off on 25th row) – 16 Center Star Squares total. Sew these squares tog invisibly as per Assembly Diagram (also see Assembly Note above about solid MC squares).

CENTER BORDER SQUARES

Each Center Border Square is 4" x 4" and is worked as foll: Cast on 15 sts (in color indicated on chart), work 19 rows of chart in St st, bind off as per Row 20 of chart. Working as above and according to chart, work 20 squares over Chart 4 and 4 squares solid in MC – 24 Center Border Squares total. Sew these squares tog and to Center Star Squares as per Assembly Diagram (also see Assembly Note above about solid MC squares).

INSIDE BORDER (each side is picked up and worked separately)

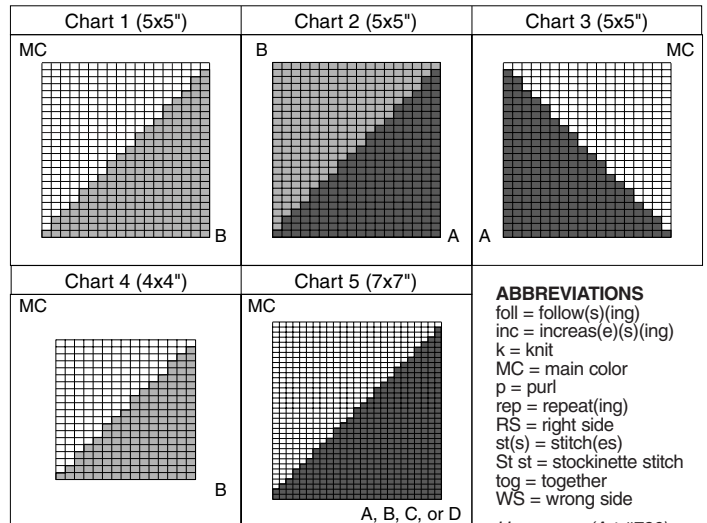
With RS facing and B, pick up and knit 100 sts evenly along one side. Working in garter st (k every row) inc 1 st each end every other row until 6 rows have been worked – 106 sts. Rep last 6 rows in A, then D – 118 sts. Bind off all sts loosely. Work three other sides to correspond. Sew corners tog – piece measures approximately 35" square.

OUTSIDE SQUARES

Each Outside Square is 7" x 7" and is worked as foll: Cast on 25 sts (in color indicated on chart), work 34 rows of chart in St st, bind off as per Row 35 of chart. Working as above and according to chart, work 6 squares over Chart 5 in A and MC, 6 squares over Chart 5 in B and MC, 4 squares over Chart 5 in C and MC, 4 squares over Chart 5 in D and MC, and 4 squares solid in MC – 24 Outside Squares total. Sew these squares tog and to Inside Border as per Assembly Diagram (also see Assembly Note above about solid MC squares).

OUTSIDE BORDER (each side is picked up and worked separately)

With RS facing and C, pick up and knit 161 sts evenly along one side. Working in garter st and inc 1 st each end every other row, work stripe as foll: 4 rows C; 4 rows MC; 4 rows A; 4 rows MC; 6 rows D; 4 rows MC; 6 rows B. Bind off all sts loosely. Work three other sides to correspond. Sew corners tog.

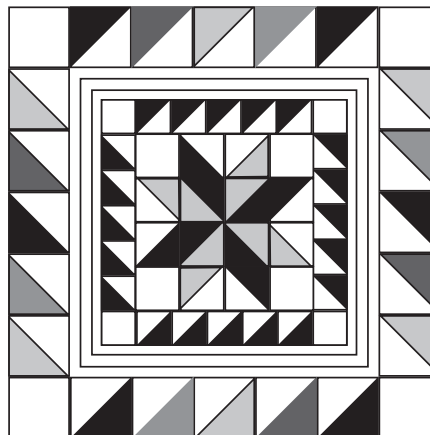


Homespun (Art #790) comes in 6 oz/185 yd skeins

Every effort has been made to have instructions accurate and complete. We cannot be responsible for variance of individual knitters, human errors, or typographical mistakes.

KEY

- Off-white, MC
- Rose, A
- Variegated, B
- Blue, C
- Green, D



“FAMOUS FOR QUALITY SINCE 1878”
LION BRAND® YARNS

34 W. 15TH ST., NY, NY 10011 1-212-243-8995 www.lionbrand.com