



**LION BRAND® MONET
& FISHERMEN'S WOOL
KNIT SNOWFLAKE
PULLOVER**



LION BRAND® MONET & FISHERMEN'S WOOL KNIT SNOWFLAKE PULLOVER

Item #1178A

INTERMEDIATE

SIZE

S (M, L, 1X, 2X, 3X).

Finished chest measurement 40 (43, 46, 49, 52, 55)"

Length 21 (21 1/2, 21 1/2, 22, 22 1/2, 23)".

MATERIALS

- LION BRAND Monet: 4 (5, 5, 6, 6, 6) hanks #404 Tropical Storm (A) or color of your choice
- LION BRAND Fisherman's Wool: 1 skein #098 Natural (B)
- One pair each sizes 8 (5 mm) and 9 (5.5 mm) needles OR SIZE TO OBTAIN GAUGE
- One size 8 (5 mm) circular needle, 16" long

GAUGE

17 sts + 23 rows = 4" (10 cm) with larger needles over St st.

BE SURE TO CHECK YOUR GAUGE.

STITCH GLOSSARY

Stripe Pattern

Row 1 (RS) With B, knit.

Row 2 With B, purl.

Row 3 With A, k 1, slip 1 wyib (with yarn in back), *k 2, slip 2 wyib; rep from *, end k 2, slip 1, k 1.

Row 4 With A, p 1, slip 1 wyif (with yarn in front), *p 2, slip 2 wyif; rep from *, end p 2, slip 1, p 1.

Rows 5 and 6 With B, rep Rows 1 and 2.

Note Charts are worked in St st, except where noted.

BACK

With smaller needles and A, cast on 86 (94, 98, 106, 110, 118) sts. Work in k2, p2 rib for 2". Change to larger needles and work even in St st (k on RS, p on WS) until piece measures 9 1/4 (9 3/4, 9 3/4, 10 1/4, 10 3/4, 11 1/4)" from beg, end with a WS row. Work Stripe Pat over next 6 rows. With A, work 2 rows even, inc 1 st on 2nd row – 87 (95, 99, 107, 111, 119) sts.

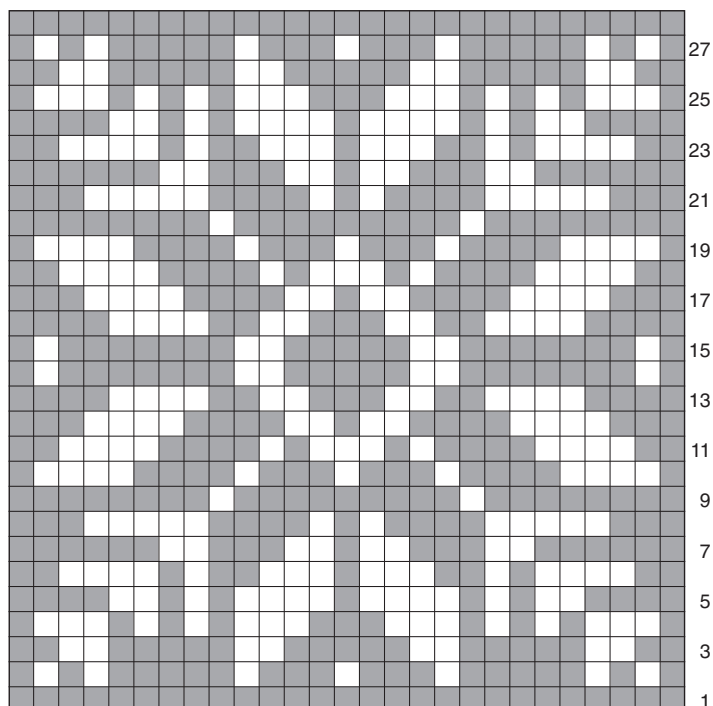
Snowflake Set-up row (RS) With A k 0 (1, 2, 2, 2, 2) sts, work last 0 (0, 5, 9, 11, 15) sts of 27 st Snowflake chart, with A k 2 (4, 1, 1, 1, 1) st(s), work 27 sts of Snowflake, with A k 1 (2, 1, 1, 1, 1) st(s), work 27 sts of Snowflake, with A k 1 (2, 1, 1, 1, 1) st(s), work 27 sts of Snowflake, with A k 2 (4, 1, 1, 1, 1) st(s), work first 0 (0, 5, 9, 11, 15) sts of 27 st Snowflake Pat, with A k 0 (1, 2, 2, 2, 2) sts. Cont to work rem 27 rows of Snowflake over over snowflake sts and St st in A over surrounding sts as established. With A, work 2 rows even, dec 1 st on first row – 86 (94, 98, 106, 110, 118) sts. Work Stripe Pat over next 6 rows. Work even in A until piece measures 21 (21 1/2, 21 1/2, 22, 22 1/2, 23)" from beg, bind off all sts.

FRONT

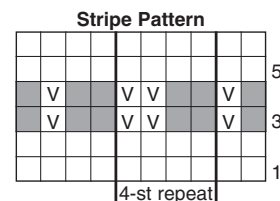
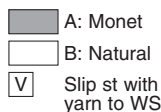
Work as for back until piece measures 18 1/4 (18 3/4, 18 3/4, 19 1/4, 19 3/4, 20 1/4)" from beg, end with a WS row. **Neck Shaping** Joining 2nd ball of yarn, bind off center 10 (10, 12, 12, 12, 12) sts, then working both sides at once, bind off from each neck edge 4 (4, 4, 4, 5, 5) sts once, 3 sts once, 2 sts once, 1 st 3 times. When piece measures same length as back, bind off 26 (29, 31, 34, 36, 40) sts each shoulder.

SLEEVES

With smaller needles and A, cast on 38 (41, 41, 43, 43, 44) sts. Work in k2, p2 rib for 2". Changing to larger needles and working in St st, inc 1 st each side every 4th row 13 (12, 12, 15, 19, 23) times, then every 6th row 4 (6, 6, 4, 2, 0) times – 72 (77, 77, 81, 85, 90) sts. Work even until piece measures 19 (19 1/4, 19 1/2, 19 3/4, 19 1/2, 19 1/4)" from beg, bind off all sts.



27 sts



FINISHING

Block all pieces lightly. Sew shoulder seams. Place markers on front and back 8 1/2 (9, 9, 9 1/2, 10, 10 1/2)" down from shoulder seams. Set in sleeves between markers. **Collar** With circular needle and RS facing, pick up 92 (92, 96, 96, 100, 100) sts evenly around neck and work in rnds of k2, p2 rib for 1 1/4". Bind off all sts loosely in rib. Sew side and sleeve seams.

ABBREVIATIONS

beg = begin(ning)
cont = continu(e)(s)(ing)
dec = decreas(e)(s)(ing)
inc = increas(e)(s)(ing)
k = knit
p = purl
pat = pattern(s)
rep = repeat

rnd(s) = round(s)
RS = right side
St st = stockinette st
st(s) = stitch(es)
WS = wrong side
wyib = with yarn in back
wyif = with yarn in front

*Monet (Art #160) comes in 4 oz/230 yd hanks
Fishermen's Wool (Art #150) comes in 8 oz/465 yd skeins*

Every effort has been made to have instructions accurate and complete. We cannot be responsible for variance of individual knitters, human errors, or typographical mistakes.



"FAMOUS FOR QUALITY SINCE 1878"
LION BRAND® YARNS

34 W. 15TH ST., NY, NY 10011 1-212-243-8995 www.lionbrand.com