



**LION BRAND® WOOL-EASE®
New Tumbling Blocks Afghan**



Skill Level: Intermediate

SIZE

39" x 60"

MATERIALS

- LION BRAND Wool-Ease
 - 3 balls #153 Black (MC)
 - 1 ball each:
 - #232 Woods Print (A)
 - #104 Blush Heather (B)
 - #170 Peacock (C)
 - #151 Grey Heather (D)
 - #139 Dark Rose Heather (E)
 - #146 Lilac (F)
 - #177 Loden (G)
 - #157 Pastel Yellow (H)
 - #152 Oxford Grey (I)
 - #147 Purple (J)
 - #171 Gold (K)
 - #148 Turquoise (L)
 - #123 Seaspray (M)
 - #125 Sandstone (N)
 - or colors of your choice
- Size 8 (5 mm)-36" circular needle
 - OR SIZE TO OBTAIN GAUGE
- Bobbins

GAUGE

18 sts and 24 rows = 4" in St st (k on RS, p on WS).

BE SURE TO CHECK YOUR GAUGE.

NOTE When changing colors, twist yarn on WS from underneath to avoid holes.
AFGHAN

With MC, cast on 160 sts. Beg on RS with chart, work in St st, following chart from right to left twice. Cont chart as established to Row 92, then rep Rows 1-92 twice more, then rep Rows 1-46 once. DO NOT bind off.

© 1998-2002 Lion Brand Yarn Company, all rights reserved
34 West 15th Street, New York, New York 10011
Call TOLL-FREE 1-800-258-YARN

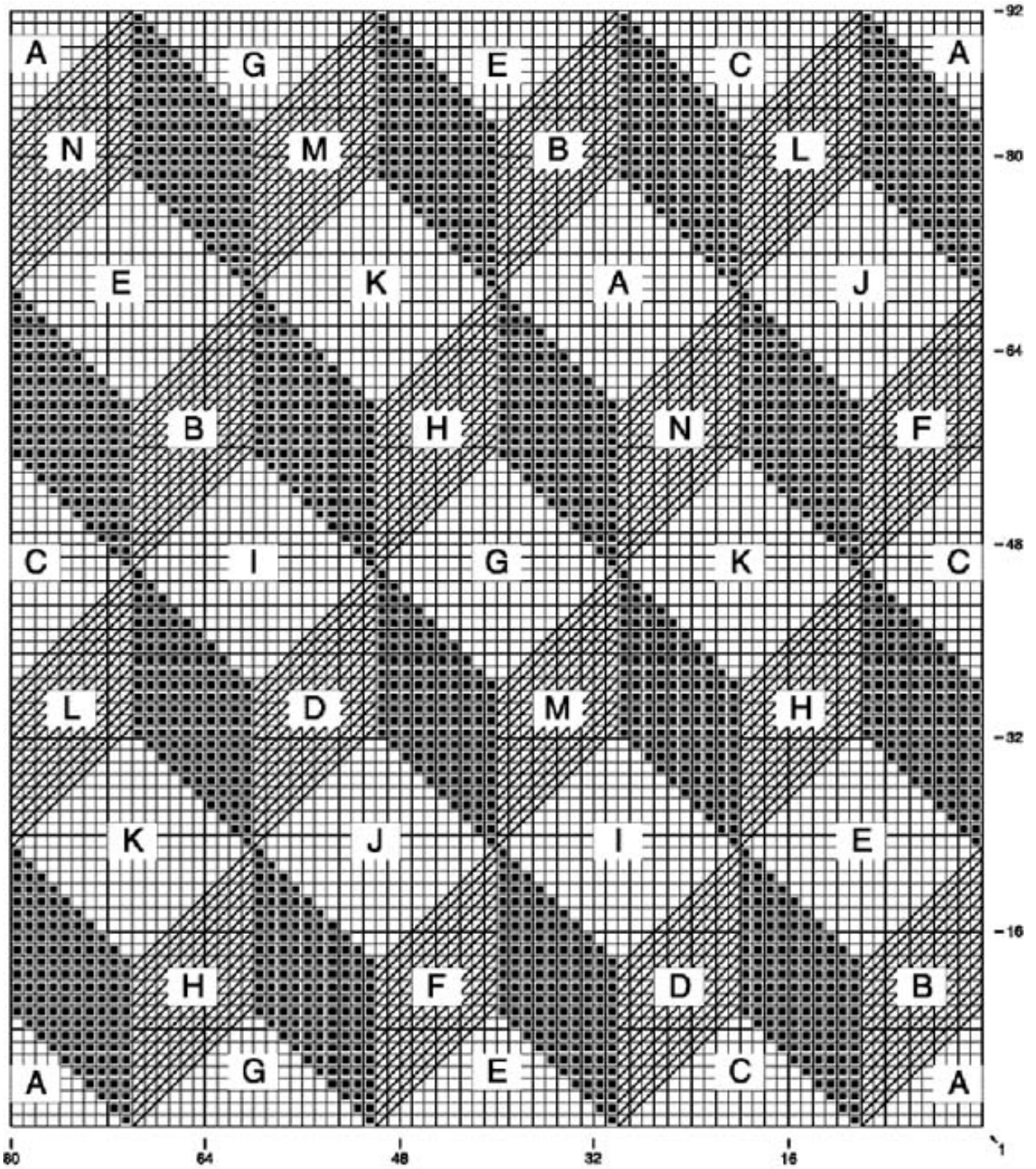
Top Border With MC, knit 1 row. Work in garter st (k every row) and inc 1 st at beg and end of every row in following color sequence: 1 row MC, 4 rows C, 2 rows MC, 4 rows E, 2 rows C, 4 rows MC. Bind off to gauge.

Lower Border With RS facing and MC, pick up and k 160 sts along lower edge of Afghan. Work as for Top

Border.

Side Borders With RS facing and MC, pick up and k 230 sts along one side edge of Afghan. Work as for Top Border. Bind off to gauge. Sew mitered edges. Work same on other side edge of Afghan.

Tumbling Blocks		
A	Woods Print	232
B	Blush Heather	104
C	Peacock	170
D	Grey Heather	151
E	Dk Rose Heather	139
F	Lilac	146
G	Loden	177
H	Pastel Yellow	157
I	Oxford Gray	152
J	Purple	147
K	Gold	171
L	Turquoise	148
M	Seaspray	123
N	Sandstone	125



© 1998-2002 Lion Brand Yarn Company, all rights reserved
34 West 15th Street, New York, New York 10011
Call TOLL-FREE 1-800-258-YARN

No pattern or other material may be reproduced – mechanically, electronically or by any other means, including photocopying – without written permission of Lion Brand Yarn Company

ABBREVIATIONS:

beg = begin(ning)	rep = repeat(s)(ing)
cont = continu(e)(ing)	RS = right side
inc = increas(e)(s)(ing)	st(s) = stitch(es)
k = knit	St st = stockinette stitch
p = purl	WS = wrong side

Every effort has been made to have the knitting and crochet instructions accurate and complete. We cannot be responsible for variance of individual knitters and crocheters, human errors, or typographical mistakes.

© 1998-2002 Lion Brand Yarn Company, all rights reserved
34 West 15th Street, New York, New York 10011
Call TOLL-FREE 1-800-258-YARN

No pattern or other material may be reproduced – mechanically, electronically or by any other means, including photocopying – without written permission of Lion Brand Yarn Company