



**Free Crochet Pattern**  
**Lion Brand® Cotton-Ease® (original)**  
**Grunny Square Vest**  
Pattern Number: 20185-2



**Free Crochet Pattern from Lion Brand Yarn**  
**Lion Brand® Cotton-Ease® (original)**  
**Grunny Square Vest**  
Pattern Number: 20185-2

**SKILL LEVEL:** Intermediate

**SIZE:** Small, Medium, Large, 1X

**Finished Chest** 37 (40, 43, 46) inches

**Note:** Pattern is written for smallest size with changes for larger sizes in parentheses. When only one number is given, it applies to all sizes. To follow pattern more easily, circle all numbers pertaining to your size before beginning.

**CORRECTIONS:** (applied Jun 16, 2003)  
Pattern called for Licorice when Candy Blue was shown

### **MATERIALS**

- 700-102 Lion Brand Cotton-Ease yarn: Bubblegum (discontinued)  
1 Ball (A)
- 700-169 Lion Brand Cotton-Ease yarn: Pistachio (discontinued)  
1 Ball (B)
- 700-107 Lion Brand Cotton-Ease yarn: Candy Blue (discontinued)  
3 Balls (C)
- Lion Brand Crochet Hook - Size F-5 (3.75 mm)
- Lion Brand Large-Eye Blunt Needles (Set of 6)
- Additional Materials  
Four ¾-inch buttons

Note: Pattern size can be increased by using a larger hook:  
For 1X size, use I-9 (5.5 mm) crochet hook

### **GAUGE:**

Each motif measures 3 (3¼, 3½, 3¾) inches square with size F (G, H, I) hook.

**BE SURE TO CHECK YOUR GAUGE.** When you match the gauge in a pattern, your project will be the size specified in the pattern and the materials specified in the pattern will be sufficient. If it takes you fewer stitches and rows to make a 4 in. [10 cm] square, try using a smaller size hook or needles; if more stitches and rows, try a larger size hook or needles.

## SQUARES

Make 56 squares following color chart below:

		<b>Make</b>	<b>Rnd 1</b>	<b>Rnd 2</b>	<b>Rnd 3</b>
<b>Square 1</b>	12		B	A	C
Square 2	8		A	B	C
Square 3	14		A	A	C
Square 4	8		B	B	C
Square 5	14		C	C	C

With first color, ch 5. Join with slip st in first ch to form a ring.

Rnd 1

Ch 3, dc in ring, \*ch 2, 2 dc in ring; rep from \* 6 times more, hdc in top of beg-ch3. If changing color, fasten off and join new color in same space with slip st.

Rnd 2

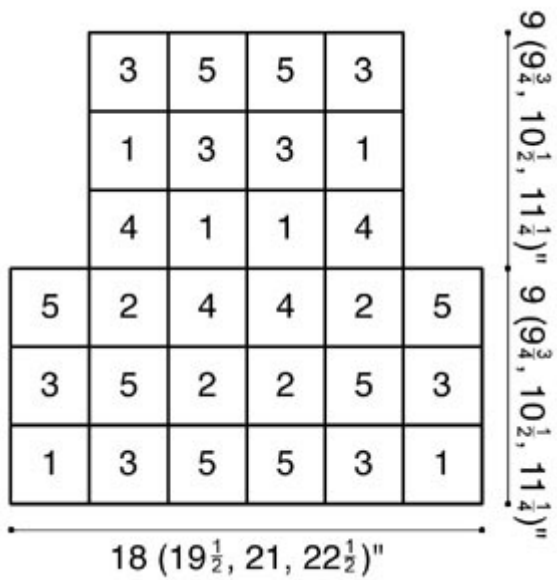
Ch 3, 3 dc in same space, 4 dc in next ch2-space, \*ch 4, (4 dc in next ch2-space) twice; rep from \* twice more, ch 2, hdc in top of beg-ch3. If changing color, fasten off and join new color in same space with slip st.

Rnd 3

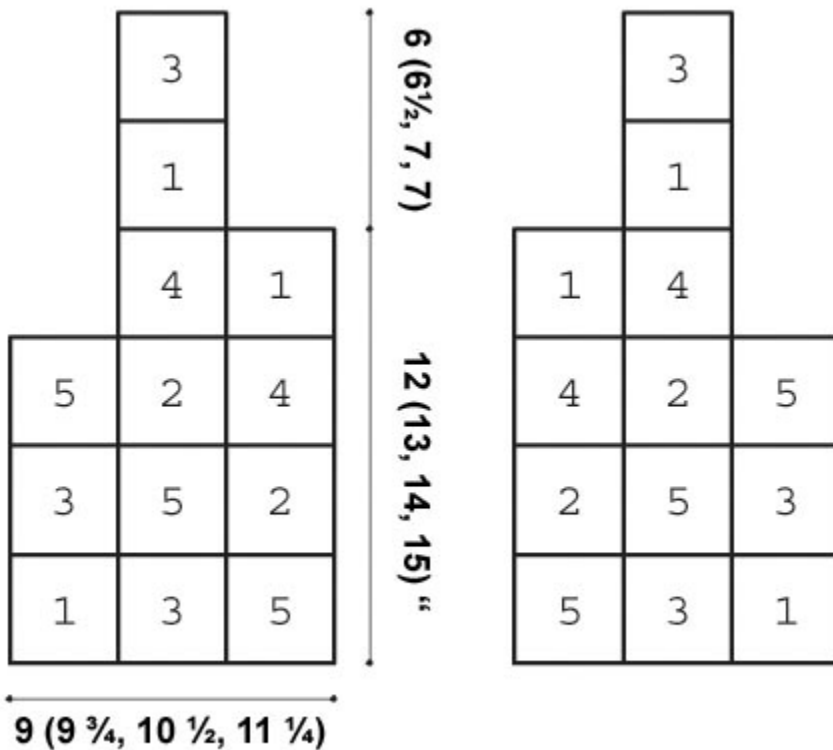
Ch 1, 3 sc in same space, \*sc in each of next 8 dc, 6 sc in ch4-space; rep from \* 3 times more, end last rep with 3 sc in last ch4-space, join with slip st. Fasten off, leaving 12 inches end for sewing squares together.

## ASSEMBLY

Sew squares together according to diagrams below:



**FRONT**



**BACK**

With C, work 1 row sc evenly around each of the three pieces, placing 4 markers along Left Front edge for buttons and making four ch2-space

buttonholes along right front edge opposite markers. Sew shoulder and side seams. Work 1 more row sc evenly around armholes and completely around outer edges of garment.

<b>ABBREVIATIONS / REFERENCES</b> Click for explanation and illustration	
<u>beg = begin(s)(ning)</u>	<u>ch(s) = chain(s)</u>
<u>dc = double crochet</u>	<u>hdc = half double crochet</u>
<u>rep = repeat(s)(ing)</u>	<u>rnd(s) = round(s)</u>
<u>sc = single crochet</u>	<u>st(s) = stitch(es)</u>

Learn to crochet instructions: <http://learnToCrochet.LionBrand.com>

---

Every effort has been made to have the knitting and crochet instructions accurate and complete. We cannot be responsible for variance of individual knitters and crocheters, human errors, or typographical mistakes.



*\*Cotton-Ease® (original) (Article #700). 50% Cotton/50% Acrylic; package size: 3.50oz/100.00 gr. (207yds/188m) pull skeins*

We want your project to be a success! If you need help with this or any other Lion Brand pattern, e-mail support is available 7 days per week. Just click [here](#) to explain your problem and someone will help you!

**For thousands of free patterns, visit our website [www.LionBrand.com](http://www.LionBrand.com)  
To order visit our website [www.lionbrand.com](http://www.lionbrand.com) or call: (800) 258-YARN  
(9276) any time!**

Copyright ©1998-2011 Lion Brand Yarn Company, all rights reserved. No pattern or other material may be reproduced -- mechanically, electronically, or by any other means, including photocopying -- without written permission of Lion Brand Yarn Company.