

LION BRAND[®]
L40202

LEVEL 3-EASY+ KNIT PULLOVER

LION BRAND[®] LION'S PRIDE[®] WOOLSPUN[®]



MATERIALS

- LION BRAND[®] LION'S PRIDE[®] WOOLSPUN[®] (Art. #671)
#123 Taupe 7 (8, 9, 10, 11) balls
or color of your choice
- LION BRAND[®] knitting needles size 10 (6 mm)
- LION BRAND[®] knitting needles size 10.5 (6.5 mm)
- LION BRAND[®] cable needle
- LION BRAND[®] stitch holders
- LION BRAND[®] stitch markers
- LION BRAND[®] large-eyed blunt needle

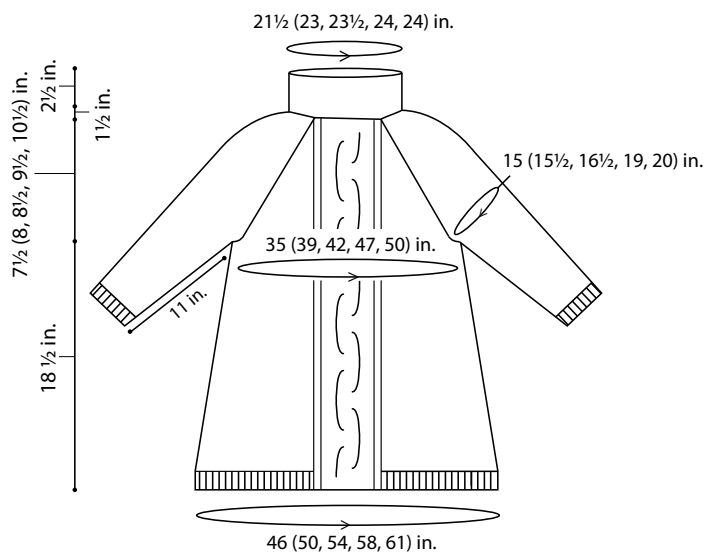
SIZE

S (M, L, 1X, 2X)

Finished Bust About 35 (39, 42, 47, 50) in. (89 (99, 106.5, 119.5, 127) cm)

Finished Length About 27 (27 ½, 28, 29, 30) in. (68.5 (70, 71, 73.5, 76) cm), not including collar

Note: Pattern is written for smallest size with changes for larger sizes in parentheses. When only one number is given, it applies to all sizes. To follow pattern more easily, circle all numbers pertaining to your size before beginning.



GAUGE

13 sts + 19 rows = about 4 in. (10 cm) in St st (k on RS, p on WS) with larger needles.

BE SURE TO CHECK YOUR GAUGE.

NOTES

1. Pullover is worked in 4 pieces: Back, Front, and Left and Right Sleeves.
2. Collar is worked around neck after Pullover has been seamed.
3. When you see '0' repeats in an instruction, this means that for your specific size, just skip to the next part of the instruction.

STITCH EXPLANATIONS

5/5 LC (5 over 5 left cross) Slip 5 sts to cable needle and hold in front, k5, then k5 from cable needle.

5/5 RC (5 over 5 right cross) Slip 5 sts to cable needle and hold in back, k5, then k5 from cable needle.

kfb (knit in front and back) Knit next st without removing it from left needle, then k through back of same st – 1 st increased.

ssk (slip, slip, knit) Slip next 2 sts as if to knit, one at a time, to right needle; insert left needle into fronts of these 2 sts and knit them tog – 1 st decreased.

PATTERN STITCH

Cable Panel (worked over 25 sts)

Row 1 (RS): P2, k1, p2, k5, 5/5 LC, p2, k1, p2.

Row 2: K2, p1, k2, p15, k2, p1, k2.

Row 3: P2, k1, p2, k15, p2, k1, p2.

Row 4: K2, p1, k2, p15, k2, p1, k2.

Rows 5-8: Rep Rows 3 and 4.

Row 9: P2, k1, p2, 5/5 RC, k5, p2, k1, p2.

Rows 10 and 11: Rep Rows 2 and 3.

Row 12: Rep Row 4.

Rep Rows 1-12 for Cable Panel pattern.

STEP 1

BACK

With larger needles, cast on 75 (81, 87, 95, 99) sts.

Row 1 (RS): Knit.

Row 2: Purl.

Row 3: K1, *p1, k1; rep from * to end of row.

Row 4: P1, *k1, p1; rep from * to end of row.

Row 5: Rep Row 3.

Row 6 (WS): P29 (32, 35, 39, 41), place marker (pm), p17, pm, p29 (32, 35, 39, 41).

Shape Back

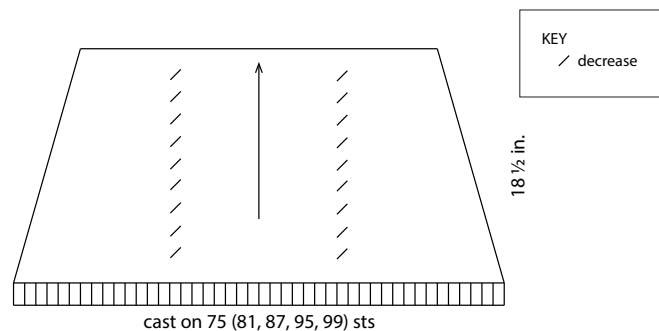
Decrease Row: K to 2 sts before first marker, k2tog, slip marker (sm), k to 2nd marker, sm, ssk, k to end of row – at the end of this row you will have 73 (79, 85, 93, 97) sts.

Work even (without increasing or decreasing) in St st (k on RS, p on WS) for 9 rows, slipping markers as you come to them.

Rep Decrease Row – 71 (77, 83, 91, 95) sts.

Rep last 10 rows 7 more times, removing markers when working last row – 57 (63, 69, 77, 81) sts after all decreases have been completed.

Work even in St st until piece measures about 18 ½ in. (47 cm) from beg, end with a WS (purl) row as the last row you work.



STEP 2

Shape Raglan Armholes

Row 1 (RS): Bind off 3 (3, 3, 4, 4) sts, k to end of row – 54 (60, 66, 73, 77) sts.

Row 2: Bind off 3 (3, 3, 4, 4) sts, p to end of row – 51 (57, 63, 69, 73) sts.

Row 3: Bind off 2 sts, k to end of row – 49 (55, 61, 67, 71) sts.

Row 4: Bind off 2 sts, p to end of row – 47 (53, 59, 65, 69) sts.

Decrease Row: K2, k2tog, k to last 4 sts, ssk, k2 – 45 (51, 57, 63, 67) sts.

Work even in St st for 3 rows.

Rep Decrease Row – 43 (49, 55, 61, 65) sts.

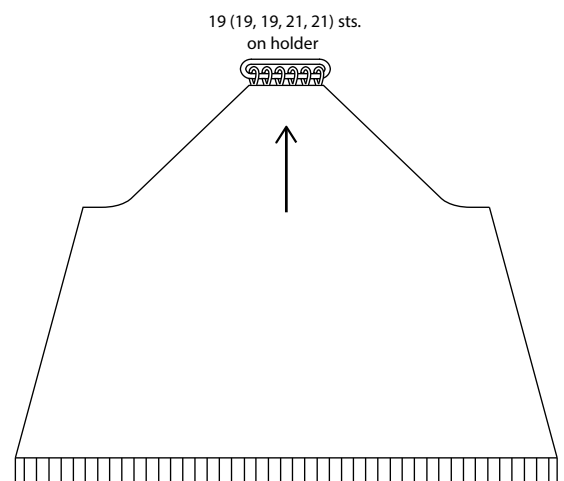
Rep last 4 rows 4 (2, 0, 1, 1) more times – 35 (45, 55, 59, 63) sts.

Purl 1 row.

Rep Decrease Row – 33 (43, 53, 57, 61) sts.

Rep last 2 rows 7 (12, 17, 18, 20) more times – 19 (19, 19, 21, 21) sts after all decreases have been completed.

Slip rem 19 (19, 19, 21, 21) sts to a holder.



STEP 3

FRONT

With larger needles, cast on 83 (87, 95, 103, 107) sts.

Note: Rows 1-6 are set-up rows. Row 5 includes a 5/5 LC but does not count as part of Cable Panel pattern.

Row 1 (RS): K29 (31, 35, 39, 41), pm, p2, k1, p2, k15, p2, k1, p2, pm, k29 (31, 35, 39, 41)

Row 2: Purl to first marker, sm, k2, p1, k2, p15, k2, p1, k2, sm, purl to end of row.

Row 3: K1, *p1, k1; rep from * to first marker, sm, p2, k1, p2, k15, p2, k1, p2, sm, k1, **p1, k1; rep from ** to end of row.

Row 4: P1, *k1, p1; rep from * to first marker, sm, k2, p1, k2, p15, k2, p1, k2, sm, p1, **k1, p1; rep from ** to end of row.

Row 5: K1, *p1, k1; rep from * to first marker, sm, p2, k1, p2, 5/5 LC, k5, p2, k1, p2, sm, k1, **p1, k1; rep from ** to end of row.

Row 6: Rep Row 2.

Shape Front

Row 7 (Decrease Row): K to 2 sts before first marker, k2tog, sm, work Row 1 of Cable Panel pattern to next marker, sm, ssk, k to end of row – 81 (85, 93, 101, 105) sts.

Row 8: Work in St st to marker, sm, work next row of Cable Panel pattern to next marker, sm, work in St st to end of row.

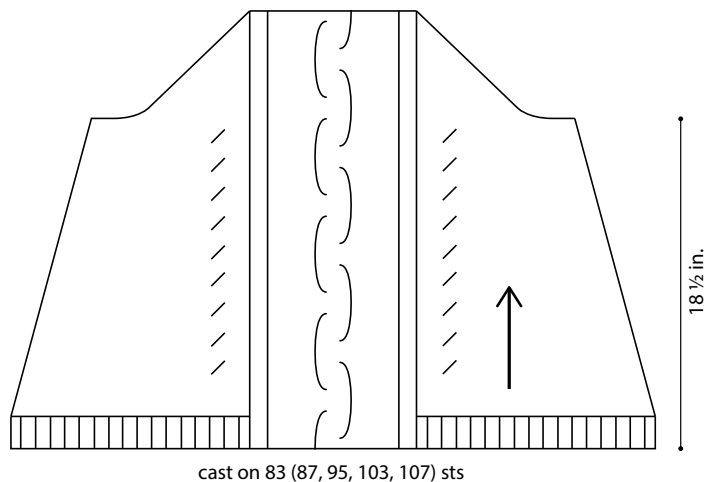
Rep last row 8 more times.

Rep Row 7 (Decrease Row) – 79 (83, 91, 99, 103) sts.

Rep last 10 rows 7 more times – 65 (69, 77, 85, 89) sts after all decreases have been completed.

Rep Row 8 until piece measures about 18 ½ in.

(47 cm) from beg, end with a WS row as the last row you work.



Shape Raglan Armholes

Row 1 (RS): Bind off 3 (3, 3, 4, 4) sts, k to first marker, sm, work next row of Cable Panel pattern to next marker, sm, k to end of row – 62 (66, 74, 81, 85) sts.

Row 2: Bind off 3 (3, 3, 4, 4) sts, p to first marker, sm, work next row of Cable Panel pattern to next marker, sm, p to end of row – 59 (63, 71, 77, 81) sts.

Row 3: Bind off 2 sts, k to first marker, sm, work next row of Cable Panel pattern to next marker, sm, k to end of row – 57 (61, 69, 75, 79) sts.

Row 4: Bind off 2 sts, p to first marker, sm, work next row of Cable Panel pattern to next marker, p to end of row – 55 (59, 67, 73, 77) sts.

Decrease Row: K2, k2tog, k to first marker, sm, work next row of Cable Panel pattern to next marker, sm, k to last 4 sts, ssk, k2 – 53 (57, 65, 71, 75) sts.

Next 3 Rows: Work in St st to marker, sm, work next row of Cable Panel pattern to next marker, sm, work in St st to end of row.

Rep Decrease Row – 51 (55, 63, 69, 73) sts.

Rep last 4 rows 2 more times – 47 (51, 59, 65, 69) sts rem.

Next Row: P to marker, sm, work next row of Cable Panel pattern to next marker, sm, p to end of row.

Rep Decrease Row – 45 (49, 57, 63, 67) sts.

Rep last 2 rows 4 (5, 6, 9, 11) more times – 37 (39, 45, 45, 45) sts rem.

Next Row: P to marker, sm, work next row of Cable Panel pattern to next marker, sm, p to end of row.

STEP 4

Shape Neck

Row 1 (RS): K2, k2tog, k to first marker, sm, p2, k1, drop first ball of yarn (do not cut); slip center 19 sts to a holder for front neck, join a 2nd ball of yarn at beg of rem sts, k1, p2, sm, k to last 4 sts, ssk, k2 – 8 (9, 12, 12, 12) sts on each side.

Note: Beginning on the next row, you will be working with 2 separate balls of yarn – one ball for each side of work.

Row 2: P to last 3 sts of first side, k2, p1; on 2nd side, bind off 2 (2, 4, 4, 4) sts, p to end of side.

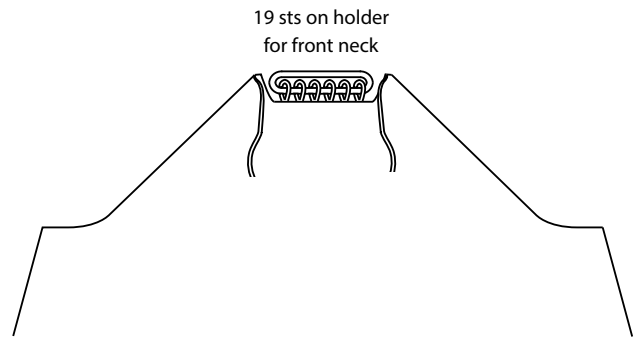
Row 3: K2, k2tog, k to last st of first side, p1; on 2nd side, bind off 2 (2, 4, 4, 4) sts, k to last 4 sts, ssk, k2 – 5 (6, 7, 7, 7) sts on each side.

Row 4: P to last st of first side, k1; on 2nd side, bind off 2 (3, 3, 3, 3) sts, p to end of side.

Row 5: K2tog, k to end of first side; on 2nd side, bind off 2 (3, 3, 3, 3) sts, k to last 2 sts, ssk – 2 (2, 3, 3, 3) sts on each side.

Row 6: P to end of first side; on 2nd side, bind off rem 2 (2, 3, 3, 3) sts.

Bind off 2 (2, 3, 3, 3) sts of rem side.



STEP 5

LEFT SLEEVE

With larger needles, cast on 39 (41, 43, 51, 55) sts.

Row 1 (RS): Knit.

Row 2: Purl.

Row 3: K1, *p1, k1; rep from * to end of row.

Row 4: P1, *k1, p1; rep from * to end of row.

Row 5: Rep Row 3.

Shape Sleeve

Row 1 (WS): Purl.

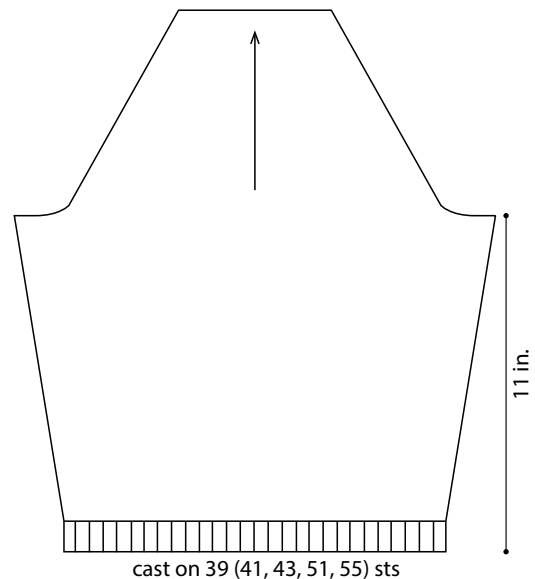
Increase Row: K1, kfb, k to last 2 sts, kfb, k1 – 41 (43, 45, 53, 57) sts.

Work even in St st (k on RS, p on WS) for 9 rows.

Rep Increase Row – 43 (45, 47, 55, 59) sts.

Rep last 10 rows 3 more times – 49 (51, 53, 61, 65) sts.

Work even in St st until piece measures about 11 in. (28 cm) from beg, end with a WS row as the last row you work.



Shape Raglans

Row 1 (RS): Bind off 3 (3, 3, 4, 4) sts, k to end of row – 46 (48, 50, 57, 61) sts.

Row 2: Bind off 3 (3, 3, 4, 4) sts, p to end of row – 43 (45, 47, 53, 57) sts.

Row 3: Bind off 2 sts, k to end of row – 41 (43, 45, 51, 55) sts.

Row 4: Bind off 2 sts, p to end of row – 39 (41, 43, 49, 53) sts.

Decrease Row: K2, k2tog, k to last 4 sts, ssk, k2 – 37 (39, 41, 47, 51) sts.

Purl 1 row.

Rep Decrease Row – 35 (37, 39, 45, 49) sts.

Rep last 2 rows 4 (5, 6, 9, 11) more times – 27 sts.

Work even in St st for 3 rows

Rep Decrease Row – 25 sts.

Rep last 4 rows 4 more times – 17 sts after all decreases have been completed.

STEP 6

Shape Sleeve Cap (top of sleeve)

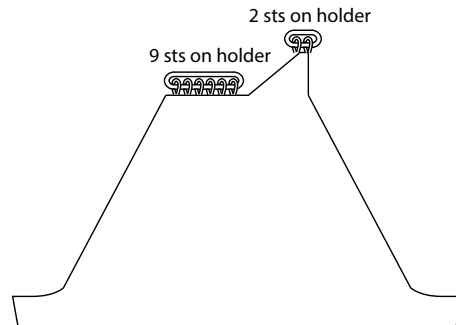
Row 1 (WS): P9 and slip these 9 sts to a holder, p2tog, p to end of row – 7 sts.

Row 2: K to last 2 sts, k2tog – 6 sts.

Row 3: P2tog, p to end of row – 5 sts.

Rep Rows 2 and 3 until you have 2 sts.

Slip rem 2 sts to a holder.



STEP 7

RIGHT SLEEVE

Work Step 5 of Left Sleeve.

Purl 1 row.

Shape Sleeve Cap (top of sleeve)

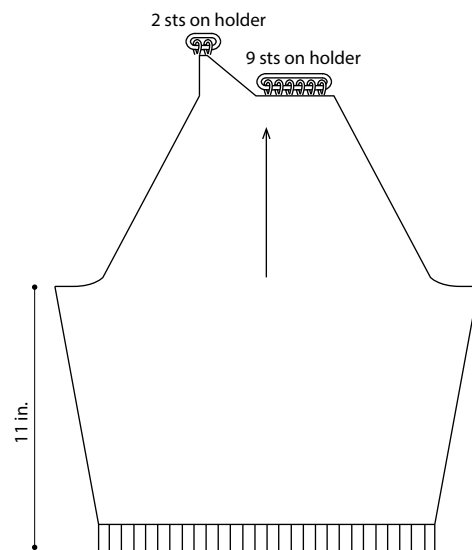
Row 1 (RS): K9 and slip these 9 sts to a holder, ssk, k to end of row – 7 sts.

Row 2: P to last 2 sts, p2tog – 6 sts.

Row 3: Ssk, k to end of row – 5 sts.

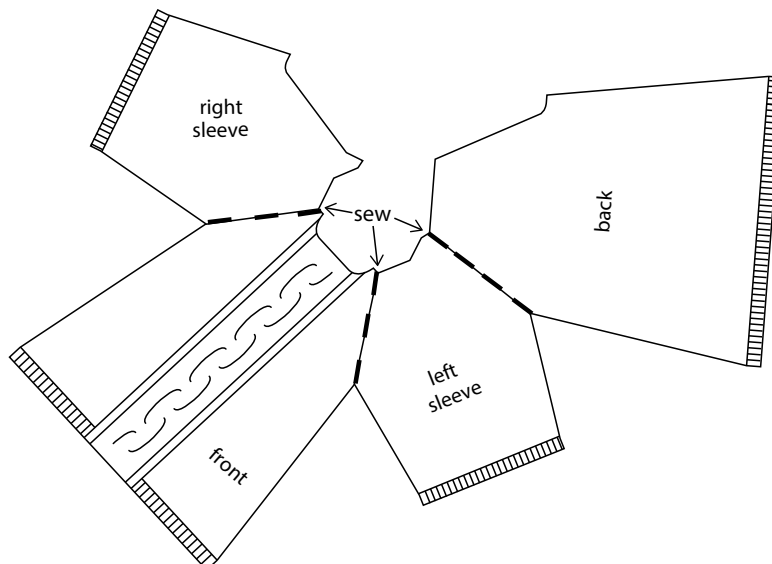
Rep Rows 2 and 3 until you have 2 sts.

Slip rem 2 sts to a holder.



STEP 8

Sew raglans, leaving the right back raglan unsewn.



STEP 9

Collar

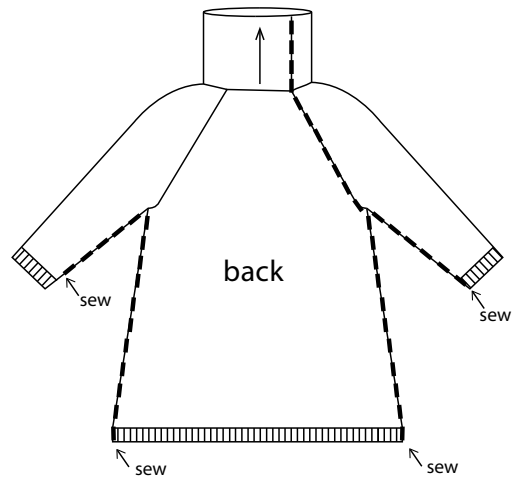
Set-Up Row (RS): From RS with smaller needles, k19 (19, 19, 21, 21) back neck sts from holder, k2 left sleeve sts from holder, pick up and k4 sts evenly spaced down sleeve cap edge, k9 left sleeve sts from holder, pick up and k6 (8, 10, 10, 10) sts evenly spaced along left front neck edge; working over front neck sts on holder, p2, k3 (3, 0, 0, 0), (k3tog) 4 (4, 5, 5, 5) times, p2; pick up and k6 (8, 10, 10, 10) sts evenly spaced along right front neck edge, k9 right sleeve sts from holder, pick up and k4 sts evenly spaced up shaped sleeve cap edge, k2 right sleeve sts from holder – 72 (76, 78, 80, 80) sts.

Next Row: Knit.

Next Row: Purl.

Work in reverse St st (k on WS, p on RS) until collar measures about 5 in. (12.5 cm) from picked up sts.

Bind off.



FINISHING

Sew right back raglan seam including edges of collar. Sew side and Sleeve seams.

Fold collar to WS and sew bound off edge to edge of neck.

Weave in ends.

ABBREVIATIONS

beg = begin(ning)(s)

k = knit

k2tog = knit 2 stitches together

k3tog = knit 3 stitches together

p = purl

rem = remain(ing)(s)

rep = repeat

RS = right side

st(s) = stitch(es)

St st = Stockinette stitch

WS = wrong side