



**Free Crochet Pattern**  
**Lion Brand® Heartland®**  
**Soho Poncho**  
Pattern Number: L40128B



The jewel-toned colorways of [Heartland](#) used in this beautiful wrap go perfectly with any fall outfit. *Designed by Vladimir Teriokhin.*

# Free Crochet Pattern from Lion Brand Yarn

## Lion Brand® Heartland®

### Soho Poncho

Pattern Number: L40128B

**SKILL LEVEL:** Intermediate (Level 3)

**SIZE:** One Size

**Finished Bust** About 74 in. (188 cm)

**Finished Length** About 24 in. (61 cm)

**CORRECTIONS:** None as of Jul 11, 2015. To check for later updates, click [here](#).

#### MATERIALS

- 136-189 Lion Brand Heartland Yarn: Isle Royale  
5 Balls (A)

- 136-353 Lion Brand Heartland Yarn: Black Canyon Tweed  
2 Balls (B)

- 136-350 Lion Brand Heartland Yarn: Mount Rainier Tweed  
1 Ball (C)

- Lion Brand Crochet Hook - Size J-10 (6 mm)
- Lion Brand Split Ring Stitch Markers
- Lion Brand Large-Eye Blunt Needles (Set of 6)

*\*Heartland (Article #136). Solids: 100% Acrylic*

*Tweeds: 94% Acrylic, 6% Rayon; package size: Solids: 5oz/142g (251yd/230m)*

*Tweeds: 4oz/113g (200yd/183m)*



#### GAUGE:

16 dc + 6 rows = about 4 in. (10 cm).

When you match the gauge in a pattern, your project will be the size specified in the pattern and the materials specified in the pattern will be sufficient. The needle or hook size called for in the pattern is based on what the designer used, but it is not unusual for gauge to vary from person to person. If it takes you fewer stitches and rows to make your swatch, try using a smaller size hook or needles; if more stitches and rows, try a larger size hook or needles.

[Making a Gauge Swatch](#)

#### STITCH EXPLANATION:

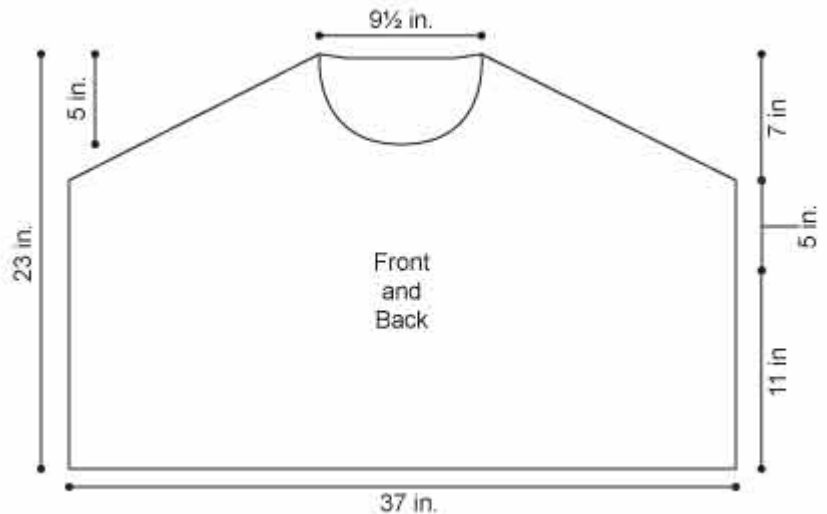
**BPHDC (Back Post half double crochet)** Yo, insert hook from back to front then to back again, going around post of indicated st, draw up a loop, yo and draw through all loops on hook. Skip st behind the FPHDC.

**FPHDC (Front Post half double crochet)** Yo, insert hook from front to back then to front, going around post of indicated st, draw up a loop, yo and draw through all loops on hook.

Skip st behind the FPHDC.

## NOTES:

1. Poncho is worked in 2 pieces, Front and Back.
2. Front and Back are sewn together then stitches are picked up around neck for turtleneck and around lower edge for ribbing.
3. When you see '- 12 sts' in the instructions, this lets you know how many sts you will have at the end of that specific row.
4. To change color, work last st of old color to last yarn over. Yarn over with new color and draw through all loops to complete the stitch. Fasten off old color.



## BACK

With B, ch 150.

**Row 1 (RS):** Dc in 4th ch from hook (beg ch counts as first dc) and in each ch across – 148 dc.

**Note:** Place a marker to identify this as the right side.

**Row 2:** Ch 1, turn, working in front loop only, sl st in each st across.

**Row 3:** Ch 3 (beg ch counts as a dc on this row and on all the rows of this pattern), turn, working in back loop only, dc in each sl st across.

Rep Rows 2-3 until piece measures about 4 in. (10 cm) from beg, end with a Row 2 (WS row) as the last row you work.

Change to C and rep Rows 2-3 until piece measures about 6 in. (15 cm) from beg, end with a WS row as the last row you work.

Change to A and rep Rows 2-3 until piece measures about 11 in. (28 cm) from beg, end with a WS row as the last row you work.

Place a marker on each side of the last row to indicate beg of armhole.

**Next Row:** Ch 3 (counts as first dc), turn, working through both loops, dc in next st and in each st across – 148 dc.

Rep last row until armhole measures about 5 in. (12.5 cm) from armhole markers, end with a WS row as the last row you work.

## Shape Shoulders

**Note:** Sl sts and beg ch-1 do not count as sts.

**Row 1 (RS):** Ch 1, turn, sl st across first 5 sts, sc in next 2 sts, hdc in next 2 sts, place marker (pm), dc in each st to last 9 sts, pm, hdc in next 2 sts, sc in next 2 sts, leave rem 5 sts unworked – 138 sts (not counting sl sts).

**Row 2:** Ch 1, turn, sl st across first 5 sts, removing marker, sc in next 2 sts, hdc in next 3 sts, pm, dc in each st to 6 sts before next marker, pm, hdc in next 3 sts, sc in next 2 sts, leave rem sts unworked, removing marker – 128 sts.

**Row 3:** Ch 1, turn, sl st across first 5 sts, remove marker, sc in next 2 sts, hdc in next 3 sts, pm, dc in each st to 5 sts before next marker, pm, hdc in next 3 sts, sc in next 2 sts, leave rem sts unworked, removing marker – 118 sts.

**Rows 4-10:** Rep Row 3 – you will have 48 sts at the end of Row 10.

### **Shape Neck**

**Row 11:** Ch 1, turn, sl st across first 6 sts, remove marker, ch 3, dc in next 2 sts, hdc in next 2 sts, sc in next 2 sts, sl st in next 24 sts, sc in next 2 sts, hdc in next 2 sts, dc in next 3 sts, leave rem 5 sts unworked.

Fasten off.

## **FRONT**

Work as for Back until Row 3 of Shoulder Shaping has been worked – 118 sts rem.

### **Shape Neck**

#### **First Shoulder**

**Row 4:** Ch 1, turn, sl st across first 5 sts, remove marker, sc in next 2 sts, hdc in next 3 sts, pm, dc in next 38 sts, hdc in next st, sc in next 2 sts, leave rem sts unworked – 46 sts.

**Row 5:** Ch 1, turn, sl st across first 3 sts, sc in next 2 sts, hdc in next st, pm, dc in each st to 5 sts before next marker, pm, hdc in next 3 sts, sc in next 2 sts, leave rem sts unworked, removing marker – 38 sts rem.

**Row 6:** Ch 1, turn, sl st across first 5 sts, remove marker, sc in next 2 sts, hdc in next 3 sts, pm, dc in each st to last 5 sts, hdc in next st, sc in next st, leave rem sts unworked – 30 sts.

**Row 7:** Ch 1, turn, sl st across first 2 sts, sc in next st, hdc in next st, pm, dc in each st to 5 sts before next marker, pm, hdc in next 3 sts, sc in next 2 sts, leave rem sts unworked, removing marker – 23 sts rem.

**Row 8:** Ch 1, turn, sl st across first 5 sts, remove marker, sc in next 2 sts, hdc in next 3 sts, pm, dc in each st to last 4 sts, hdc in next st, sc in next st, leave rem sts unworked – 16 sts.

**Row 9:** Ch 3 (counts as first dc), turn, skip next st, dc in each st to 5 sts before next marker, pm, hdc in next 3 sts, sc in next 2 sts, leave rem sts unworked, removing marker – 10 sts.

**Row 10:** Ch 1, turn, sl st across first 5 sts, remove marker, sc in next 2 sts, hdc in next 3 sts – 5 sts.

**Row 11:** Ch 2 (counts as first hdc), turn, hdc in next 2 sts, sc in next 2 sts.

Fasten off.

### **Second Shoulder**

Skip center 16 sts on last full row worked (Row 3).

**Row 4:** From WS, join yarn in next st with sl st, sc in same st, sc in next st, hdc in next st, dc in each st to last 10 sts, pm, hdc in next 3 sts, sc in next 2 sts, leave rem sts unworked – 46 sts.

**Row 5:** Ch 1, turn, sl st across first 5 sts, remove marker, sc in next 2 sts, hdc in next 3 sts, pm, dc in each st to last 6 sts, hdc in next st, sc in next 2 sts, leave rem sts unworked – 38 sts rem.

**Row 6:** Ch 1, turn, sl st across first 3 sts, sc in next st, hdc in next st, pm, dc in each st to 5 sts before next marker, pm, hdc in next 3 sts, sc in next 2 sts, leave rem sts unworked, remove marker – 30 sts.

**Row 7:** Ch 1, turn, sl st across first 5 sts, remove marker, sc in next 2 sts, hdc in next 3 sts, pm, dc in each st to last 4 sts, hdc in next st, sc in next st, leave rem sts unworked – 23 sts.

**Row 8:** Ch 1, turn, sl st across first 2 sts, sc in next st, hdc in next st, pm, dc in each st to 5 sts before next marker, pm, hdc in next 3 sts, sc in next 2 sts, leave rem sts unworked, remove marker – 16 sts.

**Row 9:** Ch 1, turn, sl st across first 5 sts, remove marker, sc in next 2 sts, hdc in next 3 sts, pm, dc in each st to last 2 sts, skip next st, dc in last st – 10 sts rem.

**Row 10:** Ch 3, turn, hdc in next 2 sts, sc in next 2 sts, leave rem sts unworked, removing marker – 5 sts.

**Row 11:** Ch 1, turn, sc in next 2 sts, hdc in next 3 sts.

Fasten off.

## **FINISHING**

Sew shoulder seams. Sew sides from armhole markers to lower edge.

### **Turtleneck**

From RS, join A with sl st in shoulder seam at neck edge.

**Rnd 1:** Ch 2 (counts as first hdc), work 95 hdc evenly spaced around neck; join with sl st in top of beg ch.

**Rnd 2:** Ch 2 (counts as first hdc), \*FPHDC in next st, BPHDC in next st; rep from \* to last st, FPHDC in next st; join with sl st in top of beg ch.

Rep Rnd 2 until Collar measures 5 1/2 in. (14 cm) from neck edge.

Fasten off.

### Lower Rib

From RS, join A with sl st in side seam at lower edge.

**Rnd 1:** Ch 2 (counts as first hdc), work 297 hdc evenly spaced around lower edge; join with sl st in top of beg ch.

**Rnd 2:** Ch 2 (counts as first hdc) \*FPHDC in next st, BPHDC in next st; rep from \* to last st, FPHDC in next st; join with sl st in top of beg ch.

**Rnds 3 and 4:** Rep Rnd 2.

Fasten off.

### Armhole Edging

From RS, join A with sl st in side seam at underarm.

**Rnd 1:** Ch 1, work 42 sc evenly spaced around armhole; join with sl st in first sc.

Rep around opposite armhole.

Fasten off.

Weave in ends.

<b>ABBREVIATIONS / REFERENCES</b>	
Click for explanation and illustration	
<a href="#"><u>beg = begin(s)(ning)</u></a>	<a href="#"><u>ch(s) = chain(s)</u></a>
<a href="#"><u>dc = double crochet</u></a>	<a href="#"><u>hdc = half double crochet</u></a>
<a href="#"><u>Pm = place marker</u></a>	<a href="#"><u>rem = remain(s)(ing)</u></a>
<a href="#"><u>rep = repeat(s)(ing)</u></a>	<a href="#"><u>rnd(s) = round(s)</u></a>
<a href="#"><u>RS = right side</u></a>	<a href="#"><u>sc = single crochet</u></a>
<a href="#"><u>sl = slip</u></a>	<a href="#"><u>sl st = slip stitch</u></a>
<a href="#"><u>st(s) = stitch(es)</u></a>	

Learn to crochet instructions: [\*\*http://learnToCrochet.LionBrand.com\*\*](http://learnToCrochet.LionBrand.com)

Every effort has been made to have the knitting and crochet instructions accurate and complete. We cannot be responsible for variance of individual knitters and crocheters, human errors, or typographical mistakes.

We want your project to be a success! If you need help with this or any other Lion Brand pattern, e-mail support is available 7 days per week. Just click [here](#) to explain your problem and someone will help you!

**For thousands of free patterns, visit our website [www.LionBrand.com](http://www.LionBrand.com)**

**To order visit our website [www.lionbrand.com](http://www.lionbrand.com) or call: (800) 258-YARN (9276) any time!**

**When in New York City, visit the Lion Brand Yarn Studio where we have the largest selection of our yarns anywhere and over 100 classes and events monthly.**

**34 West 15th Street, NY, NY 10011**

Copyright ©1998-2015 Lion Brand Yarn Company, all rights reserved. No pattern or other material may be reproduced -- mechanically, electronically, or by any other means, including photocopying -- without written permission of Lion Brand Yarn Company.