



Free Knitting Pattern
Lion Brand[®] Wool-Ease[®] Thick & Quick[®]
Jolly Roger Poncho
Pattern Number: L40331



Knit this pirate or punk-inspired wrap to wear when you go Trick-or-Treating. *Designed by Nicky Epstein.*

Free Knitting Pattern from Lion Brand Yarn

Lion Brand® Wool-Ease® Thick & Quick® Jolly Roger Poncho

Pattern Number: L40331

SKILL LEVEL: Easy + (Level 3)

SIZE: One Size

Finished Circumference About 90 in. (228 cm) at widest

Finished Length About 16 1/2 in. (42 cm)

CORRECTIONS: (applied Jan 13, 2015)

PLAIN PANELS (make 2)

With longer **shorter** circular needle and A, cast on 34 sts.

MATERIALS

- 640-153 Lion Brand Wool-Ease Thick & Quick
Yarn: Black

4 Balls (A)

- 640-099 Lion Brand Wool-Ease Thick & Quick
Yarn: Fisherman

1 Ball (B)

- Lion Brand Split Ring
Stitch Markers
- Lion Brand Large-Eye
Blunt Needles (Set of 6)

- Additional Materials
Circular knitting needle
size 15 (10 mm), 60 in.
(152 cm) long
Circular knitting needle
size 15 (10 mm), 24 in.
(60 cm) long

**Wool-Ease Thick & Quick (Article #640).*

*Solids, Heathers, Twists, Prints, Stripes: 80%
Acrylic, 20% Wool*

*Wheat & Wood: 86% Acrylic; 10% Wool; 4%
Rayon*

*Oatmeal & Barley & Grey Marble: 82%
Acrylic; 10% Wool; 8% Rayon*

*Metallics: 79% Acrylic, 20% Wool, 1%
Metallic Poly; package size: Solids, Heathers,
Twists, Tweeds: 6 oz./170g (106 yd/97 m)*

Prints, Stripes: 5 oz./140g (87 yd/80 m)

Metallics: 5 oz./140g (92 yd/84 m)



GAUGE:

9 sts + 12 rows = about 4 in. (10 cm) in St st (k on RS, p on WS).

When you match the gauge in a pattern, your project will be the size specified in the pattern and the materials specified in the pattern will be sufficient. The needle or hook size called for in the pattern is based on what the designer used, but it is not unusual for gauge to vary from person to person. If it takes you fewer stitches and rows to make your swatch, try using a smaller size hook or needles; if more stitches and rows, try a larger size hook or needles.

Making a Gauge Swatch

STITCH EXPLANATION:

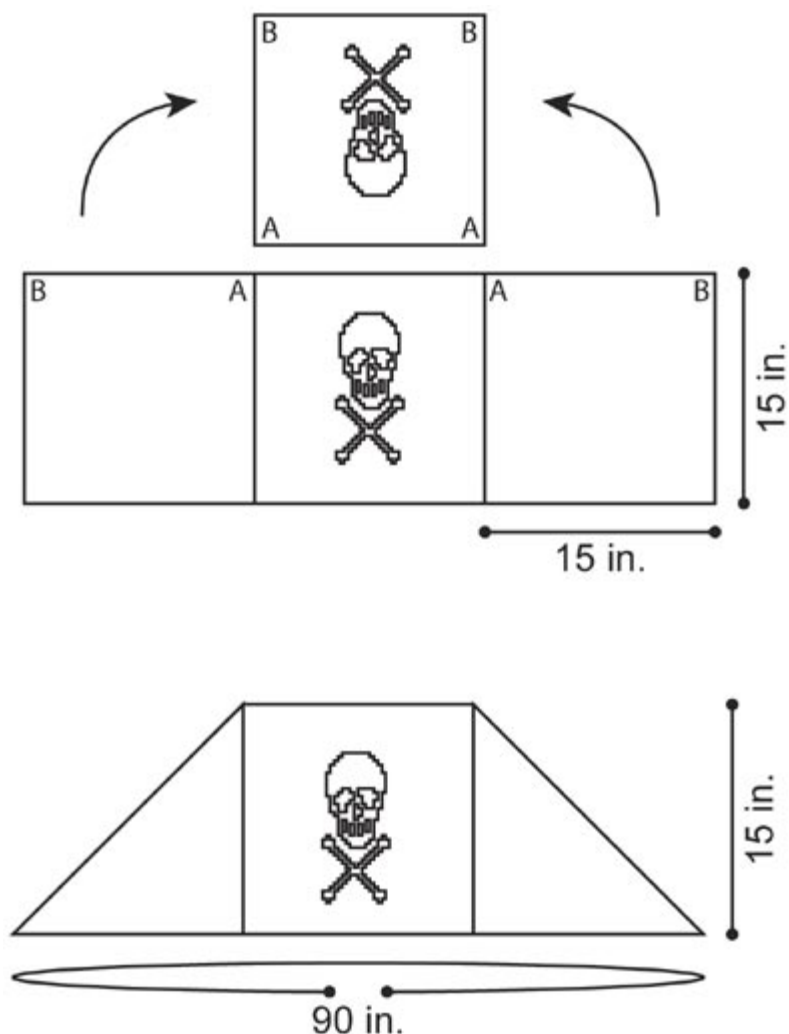
yo (yarn over)

An increase that also creates a small decorative hole (eyelet) in the fabric, worked as follows:

1. Bring yarn to front, between the needles.
2. Take yarn to back, over the right needle. This creates the new st. You are now ready to proceed with the next st as instructed.

NOTES:

1. Four Panels are worked separately, then sewn together to make Poncho.
2. Panels are worked back and forth in rows on circular needle, as if working on straight needles.
3. Two Panels are worked in intarsia colorwork, following a chart.
4. When working intarsia, use a separate ball of yarn for each color section, do not carry unused color across WS of work. Twist yarns on WS to prevent holes.
5. When following chart, work in St st (k on RS, p on WS), and read RS chart rows from right to left and WS chart rows from left to right.
6. Stitches are picked up around lower edge of Panels for border, then border is worked in the round.
7. End with a WS row means that the last row you work should be a WS row, and the next row that you are ready to work will be a RS row.
8. When you see "- 12 sts" in the instructions, this lets you know how many sts you will have at the end of that specific row.



PONCHO

PLAIN PANELS (make 2)

With shorter circular needle and A, cast on 34 sts.

Work in St st (k on RS, p on WS), back and forth in rows on circular needle, until piece measures 15 in. (38 cm) from beg.

Bind off.

SKULL PANELS (make 2)

Cast on and work as for Plain Panels until piece measures about 1 1/2 in. (4 cm) from beg, end with a WS row as the last row you work.

Beg Chart

Row 1 (RS): With A, k8, work Row 1 of Skull Chart across next 17 sts, with A, k9.

Continue in St st, keeping first and last sts with A and remaining sts following chart until 38 rows of Skull Chart have been completed.

With A only, continue in St st until piece measures same length as Plain Panels.

Bind off.

FINISHING

Following diagram, sew a side edge of each Plain Panel to the sides of one Skull Panel. Following diagram, on remaining side of one Plain Panel, match A on Plain Panel to A on Skull Panel, then match B on Plain Panel to B on Skull Panel. Sew Panels together from A to B. Rep on opposite side.

Lower Edge Border

Note that one corner of each Plain Panel forms a 'point' along the lower edge of the Poncho.

From RS with longer circular needle and A, beg at one of these points, pick up and knit 102 sts evenly spaced along lower edge of Poncho – 34 sts across each of the 3 panel edges to the next point; place

marker (pm), pick up and knit 102 sts evenly spaced along lower edge of panels back to first corner – 204 sts. Place marker for beg of rnd and join by working the first st on left hand needle with working yarn from right hand needle.

Rnd 1: *P1, yo, purl to next marker, yo, slip marker (sm); rep from * once – you will have 208 sts at the end of this rnd.

Rnd 2: (K1, yo, knit to next marker, yo, sm) twice – 212 sts.

Rnd 3: Rep Rnd 1 – 216 sts.

Note: When changing to B on Rnd 4, do not cut A, just carry strand of A up the WS of your work.

Rnd 4: Change to B, rep Rnd 2 – 220 sts.

Rnd 5: With B, rep Rnd 1 – 224 sts.

Cut B.

Rnd 6: Change to A, rep Rnd 2 – 228 sts.

Rnd 7: With A, rep Rnd 1 – 232 sts.

Bind off.

Neckband

From RS with shorter circular needle and A, beg at one seam along neck edge of Poncho, pick up and knit 62 sts evenly spaced around neck. Place marker for beg of rnd and join.

Rnd 1: Purl.

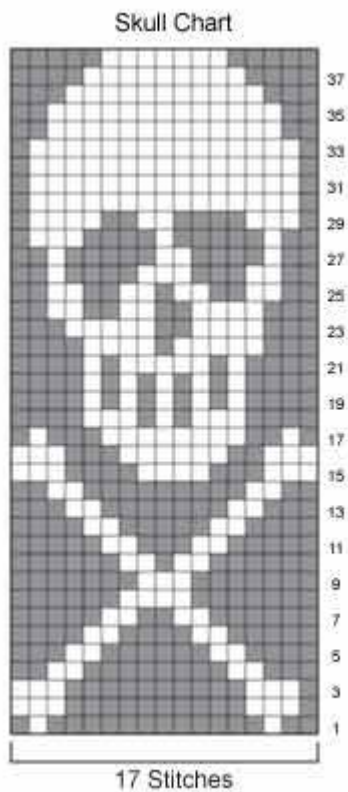
Rnd 2: Knit.

Rnds 3-8: Rep Rnds 1 and 2.

Rnd 9: Purl.

Bind off.

Weave in ends.



Stitch Key

■ = A

□ = B

ABBREVIATIONS / REFERENCES

Click for explanation and illustration

<u>beg = begin(s)(ning)</u>	<u>k = knit</u>
<u>p = purl</u>	<u>rep = repeat(s)(ing)</u>
<u>rnd(s) = round(s)</u>	<u>RS = right side</u>
<u>St st = Stockinette stitch</u>	<u>st(s) = stitch(es)</u>
<u>WS = wrong side</u>	

Learn to knit instructions: <http://learnToKnit.LionBrand.com>

Every effort has been made to have the knitting and crochet instructions accurate and complete. We cannot be responsible for variance of individual knitters and crocheters, human errors, or typographical mistakes.

We want your project to be a success! If you need help with this or any other Lion Brand pattern, e-mail support is available 7 days per week. Just click [here](#) to explain your problem and someone will help you!

For thousands of free patterns, visit our website www.LionBrand.com

To order visit our website www.lionbrand.com or call: (800) 258-YARN (9276) any time!

When in New York City, visit the Lion Brand Yarn Studio where we have the largest selection of our yarns anywhere and over 100 classes and events monthly.

34 West 15th Street, NY, NY 10011

Copyright ©1998-2015 Lion Brand Yarn Company, all rights reserved. No pattern or other material may be reproduced -- mechanically, electronically, or by any other means, including photocopying -- without written permission of Lion Brand Yarn Company.