



Free Knitting Pattern
Lion Brand® Vanna's Glamour®
The Animal Lover Dog Sweater
Pattern Number: L32370



Free Knitting Pattern from Lion Brand Yarn
Lion Brand® Vanna's Glamour®
The Animal Lover Dog Sweater
Pattern Number: L32370

SKILL LEVEL: Easy + (Level 3)

SIZE: Varies

S (M)

To fit dogs about 10-18 (18-29) lb.

Finished Neck Circumference 12 1/2 (15 1/2) in. (32 (39.5) cm)

Finished Chest 18 1/2 (22 1/2) in. (47 (57) cm)

Finished Length 16 1/2 (19) in. (42 (48.5) cm)

CORRECTIONS: None as of Sep 13, 2014. To check for later updates, click [here](#).

MATERIALS

- 861-153 [Lion Brand Vanna's Glamour Yarn: Onyx](#)
2 3 Balls (A)
- 861-171 [Lion Brand Vanna's Glamour Yarn: Gold](#)
2 3 Balls (B)
- [Lion Brand Knitting Needles- Size 8 \[5 mm\]](#)
- [Lion Brand Double-Pointed Needles - Size 8](#)
- [Lion Brand Knitting Needles- Size 9 \[5.5 mm\]](#)
- [Lion Brand Split Ring Stitch Markers](#)
- [Lion Brand Large-Eye Blunt Needles \(Set of 6\)](#)
- Additional Materials
Circular knitting needle
size 8 (5 mm), 24 in. (61 cm) long

**Vanna's Glamour® (Article #861). 96% Acrylic, 4% Metallic Polyester; package size: 1.75oz/49.61 gr. (202yds/185m) pull skeins*



GAUGE:

20 sts + 18 rows = 4 in. (10 cm) in stranded colorwork with larger needles and 2 strands of yarn held tog.

When you match the gauge in a pattern, your project will be the size specified in the pattern and the materials specified in the pattern will be sufficient. The needle or hook size called for in the pattern is based on what the designer used, but it is not unusual for gauge to vary from person to person. If it takes you fewer stitches and rows to make your swatch, try using a smaller size hook or needles; if more stitches and rows, try a larger size hook or needles.

[Making a Gauge Swatch](#)

STITCH EXPLANATION:

ssk (slip, slip, knit) Slip next 2 sts as if to knit, one at a time, to right needle; insert left needle into fronts of these 2 sts and knit them tog - 1 st decreased.

PATTERN STITCH

K1, p1 Rib worked in rnds (over an even number of sts)

Rnd 1: *K1, p1; rep from * to end of rnd.

Rep Rnd 1 for K1, p1 Rib worked in rnds.

NOTES:

1. Sweater is worked in 2 pieces: Back and Underpiece. Each piece is worked back and forth in rows. Sides are seamed with sections left unsewn for leg openings.
2. Back is worked in stranded colorwork following a chart. Carry color not in use across WS of work. When following Chart read RS rows from right to left and WS rows from left to right. Chart is worked in St st (k on RS, p on WS).
3. Underpiece is worked in a single color.
4. Sweater is worked with 2 strands of yarn tog.
5. Ribbing is worked in rnds around the neck edge, leg openings, and lower edge. When working in the round on double pointed needles (dpns), your sts need to be divided fairly evenly onto 4 needles. The total number of sts will not always be evenly divisible by the number of dpns that you are using - this is not a problem! Simply divide your sts as evenly as possible, you will still create a symmetrical 'tube' of knitting.

BACK

With larger needles and 2 strands of B held tog, cast on 62 (78) sts.

Work even in St st (k on RS, p on WS) and change color following Chart, for desired size, for 58 (66) rows.

Shape Top

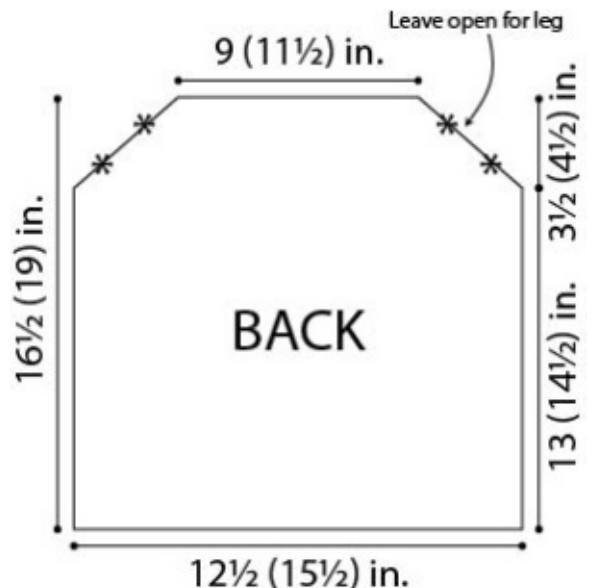
Continue to follow Chart and work shaping as follows:

Decrease Row (RS): Ssk, k to last 2 sts, k2tog - 60 (76) sts.

Next Row: Purl.

Rep last 2 rows until - 46 (58) sts rem.

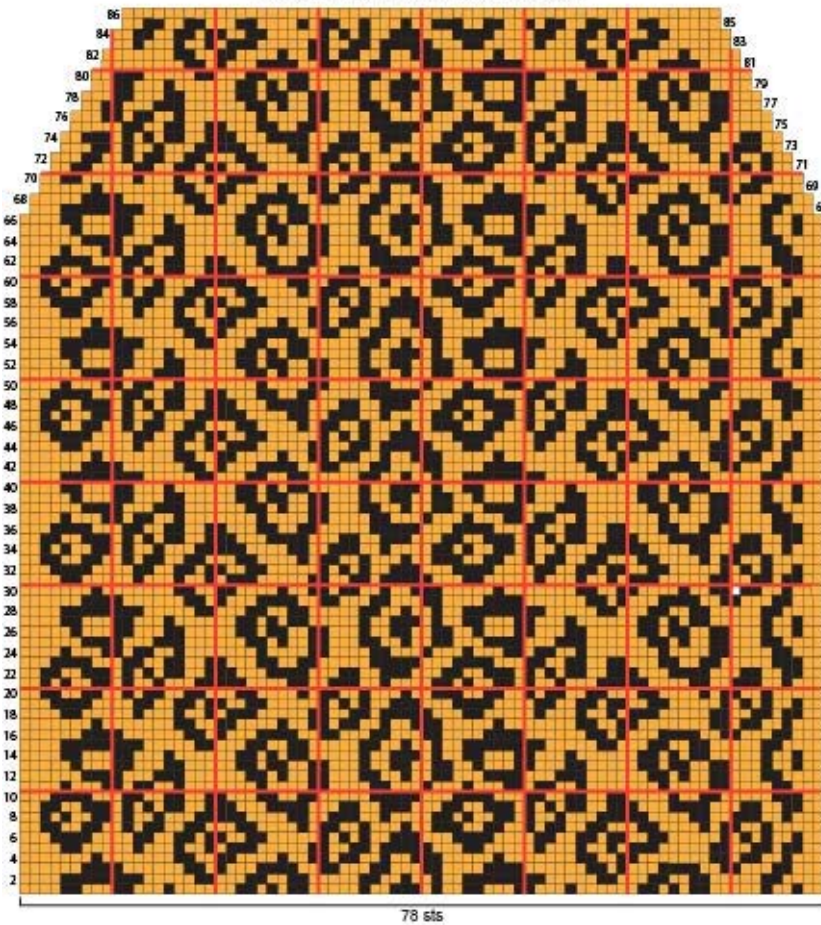
Bind off.



Back Fair Isle Chart - Size Small



Back Fair Isle Chart - Size Medium



UNDERPIECE

With larger needles and 2 strands of B held tog, cast on 30 (35) sts.

Work even in St st until piece measures about 7 (9) in. (18 (23) cm) from beg, end with a WS row.

Note: End with a WS row means that the last row you work should be a WS row, and the next row that you are ready to work will be a RS row.

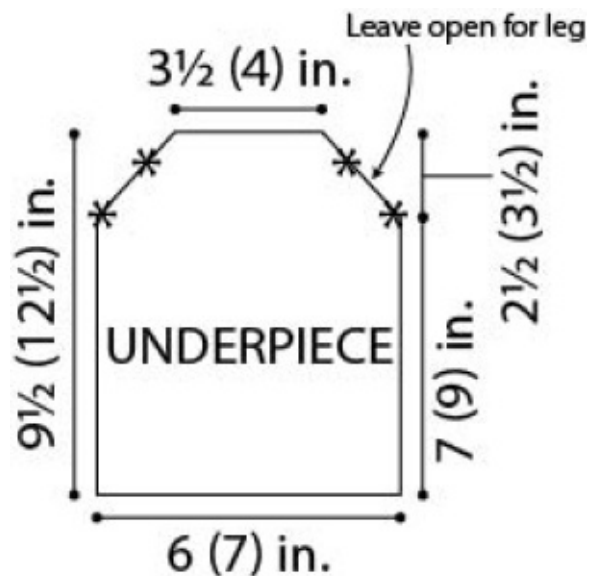
Shape Top

Decrease Row (RS): Ssk, k to last 2 sts, k2tog – 28 (33) sts.

Next Row: Purl.

Rep last 2 rows until – 18 (19) sts rem.

Bind off.



FINISHING

Beg at neck edge, sew sides of Underpiece to Back for 1 1/2 (2) in. (4 (5) cm); leave next 2 (2 1/2) in. (5 (6.5) cm) open for legs, then sew remainder of Underpiece to Back. Note that the lower portion of the Back remains unsewn.

Neck Trim

From RS, with double pointed needles and 2 strands of A held tog, pick up and k 60 (74) sts evenly spaced around neck edge. Divide sts evenly, with 15 (18) sts on 2 needles and 15 (19) sts on the third and fourth needles. Place marker for beg of rnd. Join by working the first st on the left hand needle with the working yarn from the right hand needle.

Work even in K1, p1 Rib worked in rnds for 1 3/4 in. (4.5 cm).

Bind off.

Leg Trim

From RS, with double pointed needles and 2 strands of A held tog, pick up and k20 (24) sts evenly spaced around one leg opening. Divide sts evenly, with 5 (6) sts on each needle.

Place marker for beg of rnd. Join by working the first st on the left hand needle with the working yarn from the right hand needle.

Work in K1, p1 Rib worked in rnds for about 1 in. (2.5 cm).

Bind off.

Rep on opposite leg opening.

Lower Edge Trim

From RS, with circular needle and 2 strands of A held tog, pick up and k 140 (154) sts evenly spaced across lower edge of back, along side edge of back, across Underpiece and along other side of back. Place marker for beg of rnd. Join by working the first st on the left hand needle with the working yarn from the right hand needle.

Work in K1, p1 Rib worked in rnds for about 1 in. (2.5 cm).

Bind off.

Weave in ends.

ABBREVIATIONS / REFERENCES	
Click for explanation and illustration	
<u>beg = begin(s)(ning)</u>	<u>k = knit</u>
<u>k2tog = knit 2 together</u>	<u>p = purl</u>
<u>rep = repeat(s)(ing)</u>	<u>rnd(s) = round(s)</u>
<u>RS = right side</u>	<u>St st = Stockinette stitch</u>
<u>st(s) = stitch(es)</u>	<u>tog = together</u>
<u>WS = wrong side</u>	

Learn to knit instructions: <http://learnToKnit.LionBrand.com>

Every effort has been made to have the knitting and crochet instructions accurate and complete. We cannot be responsible for variance of individual knitters and crocheters, human errors, or typographical mistakes.

We want your project to be a success! If you need help with this or any other Lion Brand pattern, e-mail support is available 7 days per week. Just click [here](#) to explain your problem and someone will help you!

For thousands of free patterns, visit our website www.LionBrand.com

To order visit our website www.lionbrand.com or call: (800) 258-YARN (9276) any time!

When in New York City, visit the Lion Brand Yarn Studio where we have the largest selection of our yarns anywhere and over 100 classes and events monthly.

34 West 15th Street, NY, NY 10011

Copyright ©1998-2014 Lion Brand Yarn Company, all rights reserved. No pattern or other material may be reproduced -- mechanically, electronically, or by any other means, including photocopying -- without written permission of Lion Brand Yarn Company.