



Free Knitting Pattern
Lion Brand® Fishermen's Wool®
Tall Trees Tunic
Pattern Number: L40332



The textured leaves and tree branches incorporated in this knit tunic are perfect for someone who loves taking long walks. *Designed by Nicky Epstein.*

Free Knitting Pattern from Lion Brand Yarn

Lion Brand® Fishermen's Wool®

Tall Trees Tunic

Pattern Number: L40332

SKILL LEVEL: Intermediate (Level 3)

SIZE: S/L, 1X/2X

S/M/L (1X/2X)

Finished Bust 44 (50) in. (112 (127) cm)

Finished Length 31 (31 1/2) in. (78.5 (80) cm), not including collar

Note: Pattern is written for smallest size with changes for larger sizes in parentheses. When only one number is given, it applies to all sizes. To follow pattern more easily, circle all numbers pertaining to your size before beginning.

CORRECTIONS: None as of Jun 23, 2016. To check for later updates, click [here](#).

MATERIALS

- 150-123 Lion Brand Fishermen's Wool Yarn:
Oatmeal
2 3 Balls
- Lion Brand Knitting Needles-
Size 9 [5.5 mm]
- Lion Brand Double-Pointed
Needles - Size 8
- Lion Brand Split Ring Stitch
Markers
- Lion Brand Large-Eye Blunt
Needles (Set of 6)
- Additional Materials
2 buttons, 1 in. (25 mm)
diameter

**Fishermen's Wool (Article #150). 100% Pure Virgin Wool
Only 202: 78% Pure Virgin Wool, 13% Acrylic, 9% Rayon ; package size: 8 oz (227 g), 465 yards (425 m)
ONLY 202: 6 oz (170 g), 348 yards (318 m)*



GAUGE:

16 sts + 22 rows = 4 in. (10 cm) in Rev St st (p on RS, k on WS).

When you match the gauge in a pattern, your project will be the size specified in the pattern and the materials specified in the pattern will be sufficient. The needle or hook size called for in the pattern is based on what the designer used, but it is not unusual for gauge to vary from person to person. If it takes you fewer stitches and rows to make your swatch, try using a smaller size hook or needles; if more stitches and rows, try a larger size hook or needles.

Making a Gauge Swatch

STITCH EXPLANATION:

skp Slip 1 as if to knit, knit 1, pass slip stitch over knit stitch – 1 st decreased.

sk2p Slip 1 as if to knit, knit 2 together, pass slipped stitch over – 2 sts decreased.

TECHNIQUE EXPLANATION

Cable Cast On Make a slip knot on left needle. Knit 1 st through slip knot, but do not drop slip knot from left needle; transfer new st from right needle to left needle – 2 sts on left needle. *Insert right needle between first 2 sts on left needle; wrap yarn and pull through (as if knitting a st); transfer new st to left needle. Repeat from * for desired number of sts.

PATTERN STITCH

K3, p3 Rib (worked over a multiple of 6 sts + 3 additional sts)

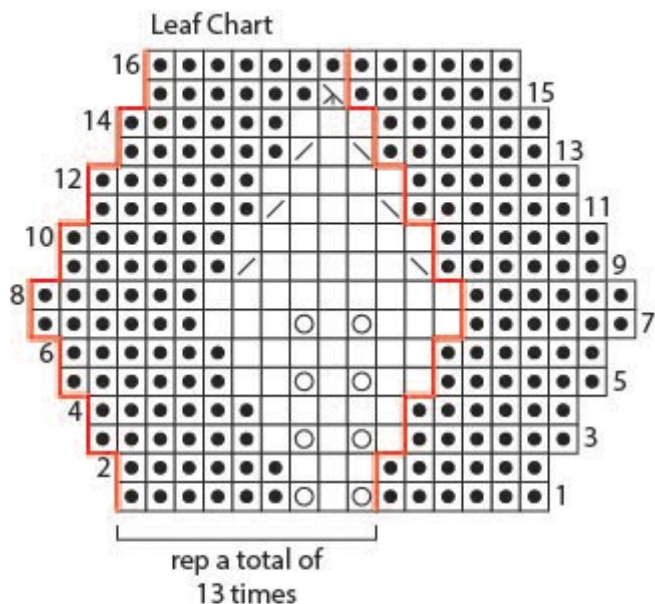
Row 1 (WS): P3, *k3, p3; rep from * to end of row.

Row 2: K the knit sts and p the purl sts.
Rep Row 2 for K3, p3 Rib.

NOTES:

1. Tunic is worked in 3 pieces: Front, Back and Collar.
2. Charted tree patterns are worked on both Front and Back.
3. When working from charts, read RS rows from right to left and WS rows from left to right.
4. Collar is worked separately and sewn to neck edge. Collar is worked in two sections: Leaf Pattern and Lower Section. The Leaf pattern can be worked by following written instructions or reading the chart.





- Key
- ☐ knit on RS, purl on WS
 - ☒ purl on RS, knit on WS
 - ☐ yarn over
 - ☒ k2tog (knit 2 stitches together)
 - ☒ skp (slip, knit, pass over)
 - ☒ sk2p (slip, k2tog, pssso)
 - ☒ p2tog (purl 2 stitches together)

FRONT

Cast on 93 (105) sts.

Beg with Row 1 (WS), work in K3, p3 Rib for 11 rows.

Front Chart

Row 1 (RS): K1, (p1, k1) 3 times, place marker (pm), work Row 1 of Front Chart over next 79 (91) sts, pm, k1, (p1, k1) 3 times.

Row 2: P1, (k1, p1) 3 times, slip marker (sm), work next row of Front Chart to next marker, sm, (p1, k1) 3 times, p1.

Rows 3-64: Work in patterns as established until 64 rows of Front Chart have been completed.

Place a marker at each end of Row 64 for button placement.

Rows 65-136: Continue in patterns as established until all 136 rows of Front Chart have been completed.

Shape Shoulders and Neck

Next Row (RS): Bind off 1 st, work in rib pattern as established to marker, sm, work in Rev St st (p on RS, k on WS) to next marker, sm, work in rib pattern as established to end of row – 92 (104) sts.

Next 7 (3) Rows: Rep last row 7 (3) more times – 85 (101) sts rem.

Note: When all the rib sts have been bound-off, remove the markers.

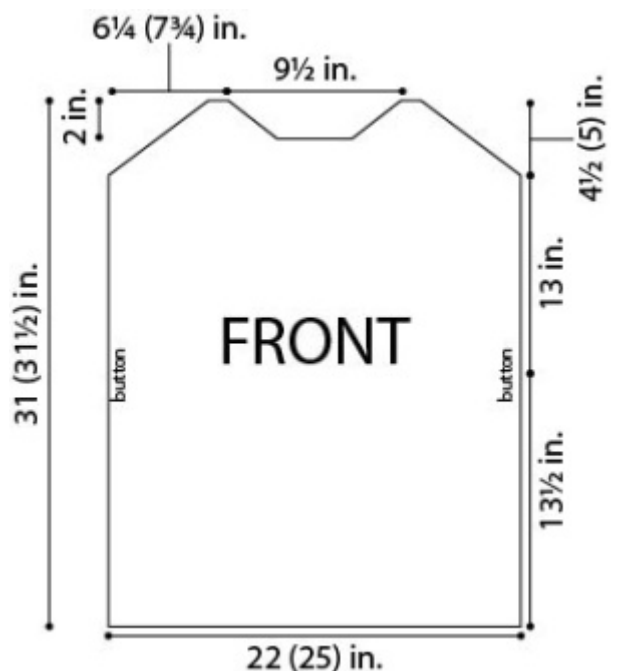
Next 4 (10) Rows: Bind off 2 sts, work in patterns as established to end of row – 77 (81) sts.

Divide for Neck

Row 1 (WS): Bind off 2 sts, work in Rev St st until 29 (31) sts are on right needle for one side of neck, join a 2nd ball of yarn and bind off center 15 sts, work in Rev St st to end of row for other side of neck. Work both sides at same time with separate balls of yarn.

Row 2: Bind off 2 sts, work in Rev St st to end of first side; on 2nd side, work in Rev St st to end of side – 29 (31) sts on each side.

Rows 3-6: Bind off 2 sts, work in Rev St st to end of first side; on 2nd side, bind off 4 sts, work in Rev St st to end of side – 17 (19) sts on each side.



Rows 7 and 8: Bind off 2 (4) sts, work in Rev St st to end of first side; on 2nd side, bind off 3 sts, work in Rev St st to end of side – 12 sts on each side at the end of Row 8.

Rows 9-12: Bind off 4 sts, work in Rev St st to end of first side; on 2nd side, work in Rev St st to end of side – 4 sts on each side at the end of Row 12.

Row 13: Bind off rem 4 sts of first side; on 2nd side, work in Rev St st to end of side.

Bind off rem 4 sts.

BACK

Cast on 93 (105) sts.

Beg with Row 1 (WS), work in K3, p3 Rib for 11 rows.

Back Chart

Row 1 (RS): K1, (p1, k1) 3 times, pm, p6 (17), pm, work Row 1 of Back Chart over next 56 sts, pm, p17 (18) pm, k1, (p1, k1) 3 times.

Row 2: P1, (k1, p1) 3 times, sm, work in Rev St st to next marker, sm, work next row of Back Chart to next marker, sm, work in Rev St st to next marker, sm, (p1, k1) 3 times, p1.

Rows 3-64: Work in patterns as established until 64 rows of Back Chart have been completed.

Place a marker at each end of Row 64 for button loop placement.

Rows 65-136: Continue in patterns as established until all 136 rows of Back Chart have been completed.

Shape Shoulders

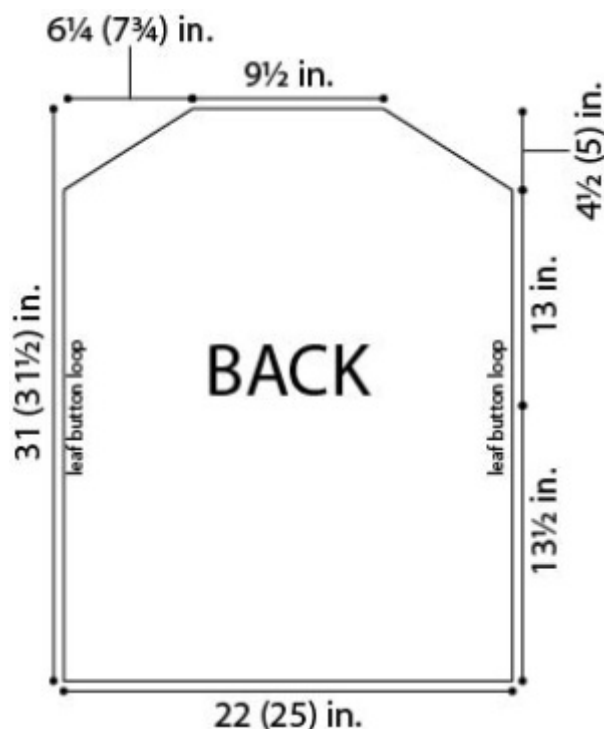
Next 8 (4) Rows: Bind off 1 st, work in rib pattern as established to marker, sm, work in Rev St st to next marker, sm, work in rib pattern as established to end of row – 85 (101) sts when all bind offs have been completed.

Note: When all the rib sts have been bound-off, remove the markers.

Next 12 (16) Rows: Bind off 2 sts, work in patterns as established to end of row – 61 (69) sts when all bind offs have been completed.

Next 6 (8) Rows: Bind off 4 sts, work in patterns as established to end of row – 37 sts when all bind offs have been completed.

Bind off.



COLLAR

Using Cable Cast On, cast on 97 sts.

Leaf Pattern

Row 1 (RS): P6, *yo, k1, yo, p6; rep from * to end of row – 123 sts.

Row 2: *K6, p3; rep from * to last 6 sts, k6.

Row 3: P6, *k1, (yo, k1) twice, p6; rep from * to end of row – 149 sts.

Row 4: *K6, p5; rep from * to last 6 sts, k6.

Row 5: P6, *k2, yo, k1, yo, k2, p6; rep from * to end of row – 175 sts.

Row 6: *K6, p7; rep from * to last 6 sts, k6.

Row 7: P6, *k3, yo, k1, yo, k3, p6; rep from * to end of row – 201 sts.

Row 8: *K6, p9; rep from * to last 6 sts, k6.

Row 9: P6, *skp, k5, k2tog, p6; rep from * to end of row – 175 sts.

Row 10: Rep Row 6.

Row 11: P6, *skp, k3, k2tog, p6; rep from * to end of row – 149 sts.

Row 12: Rep Row 4.

Row 13: P6, *skp, k1, k2tog, p6; rep from * to end of row – 123 sts.

Row 14: Rep Row 2.

Row 15: P6, *sk2p, p6; rep from * to end of row – 97 sts.

Row 16: Knit.

Lower Section

Row 17: P47, p2tog, p48 – 96 sts.

Row 18: Knit.

Row 19: Purl.

Row 20: Knit.

Rows 21-42: *K3, p3; rep from * to end of row.

Bind off.

BUTTON LOOPS (make 2)

Using 2 double pointed needles, cast on 3 sts.

Knit the 3 sts. Do not turn work. *Slide sts to other end of needle and knit them, pulling yarn tightly across the back of the work, (do not turn work); rep from * until cord measures about 2 in. (5 cm) long. Fold cord in half and pick up 2 sts across cast on edge – 5 sts. Purl one row.

Row 1 (RS): K2, yo, k1, yo, k2 – 7 sts.

Row 2 and all WS rows: Purl.

Row 3: K3, yo, k1, yo, k3 – 9 sts.

Row 5: K4, yo, k1, yo, k4 – 11 sts.

Row 7: Skp, k7, k2tog – 9 sts.

Row 9: Skp, k5, k2tog – 7 sts.

Row 11: Skp, k3, k2tog – 5 sts.

Row 13: Skp, k1, k2tog – 3 sts.

Row 15: Sk2p – 1 st.

Fasten off rem st.

FINISHING

Sew shoulder seams. Sew side edges of Collar tog to make a ring. With RS of Collar facing WS of Tunic, and Collar seam at center back, sew bound off edge of Collar to Tunic.

Sew one button to each side of Front at markers. Sew one Button Loop to each side of Back at markers. Remove markers. Weave in ends.

ABBREVIATIONS / REFERENCES	
Click for explanation and illustration	
<u>beg = begin(s)(ning)</u>	<u>k = knit</u>
<u>k2tog = knit 2 together</u>	<u>p = purl</u>
<u>p2tog = purl 2 together</u>	<u>rem = remain(s)(ing)</u>
<u>rep = repeat(s)(ing)</u>	<u>Rev St st = reverse stockinette stitch</u>
<u>RS = right side</u>	<u>st(s) = stitch(es)</u>
<u>tog = together</u>	<u>WS = wrong side</u>

Learn to knit instructions:<http://www.lionbrand.com/learn/how-to-knit>

Every effort has been made to have the knitting and crochet instructions accurate and complete. We cannot be responsible for variance of individual knitters and crocheters, human errors, or typographical mistakes.

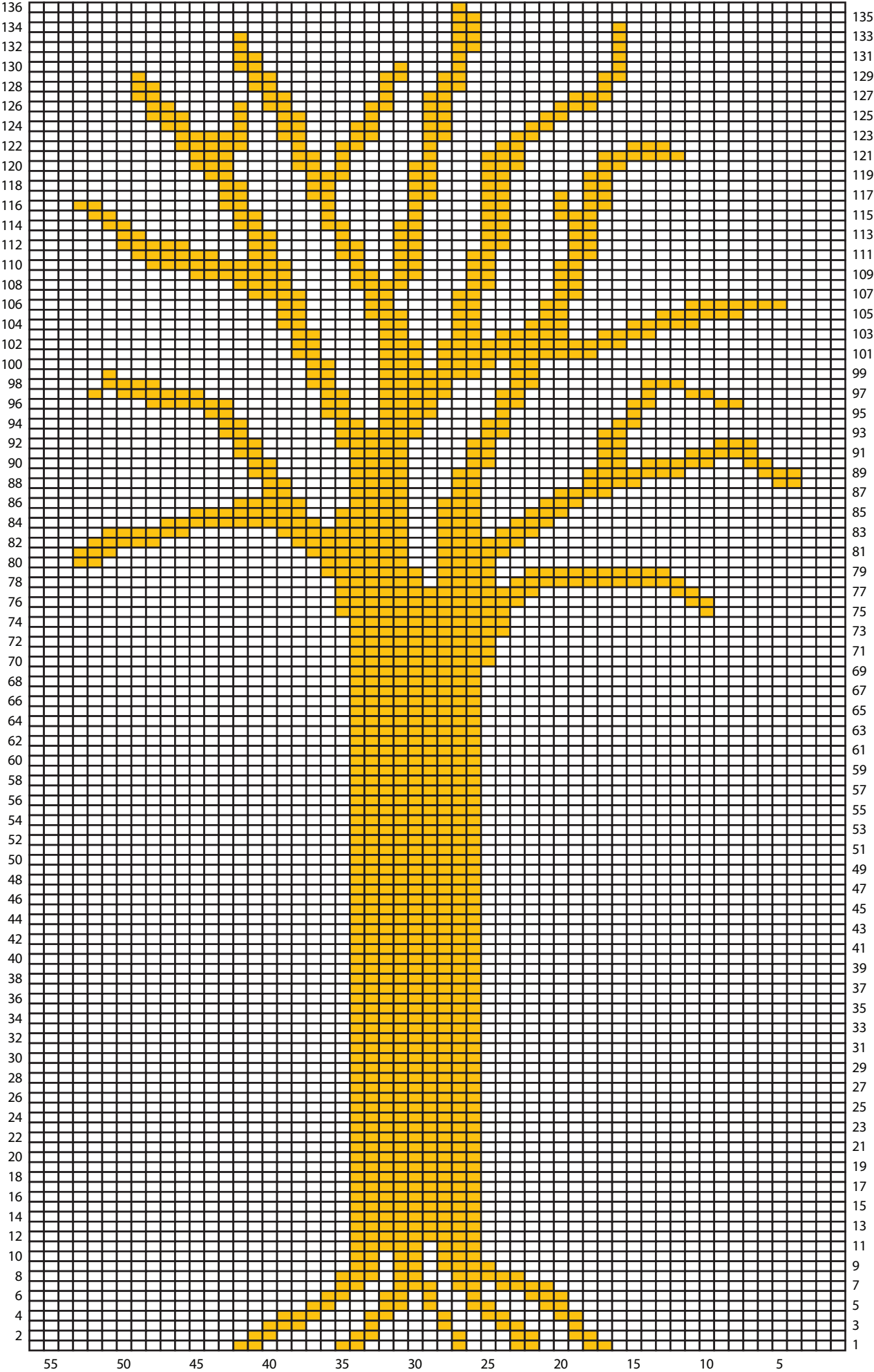
For thousands of free patterns, visit our website www.LionBrand.com

To order visit our website www.lionbrand.com or call: (800) 258-YARN (9276) any time!

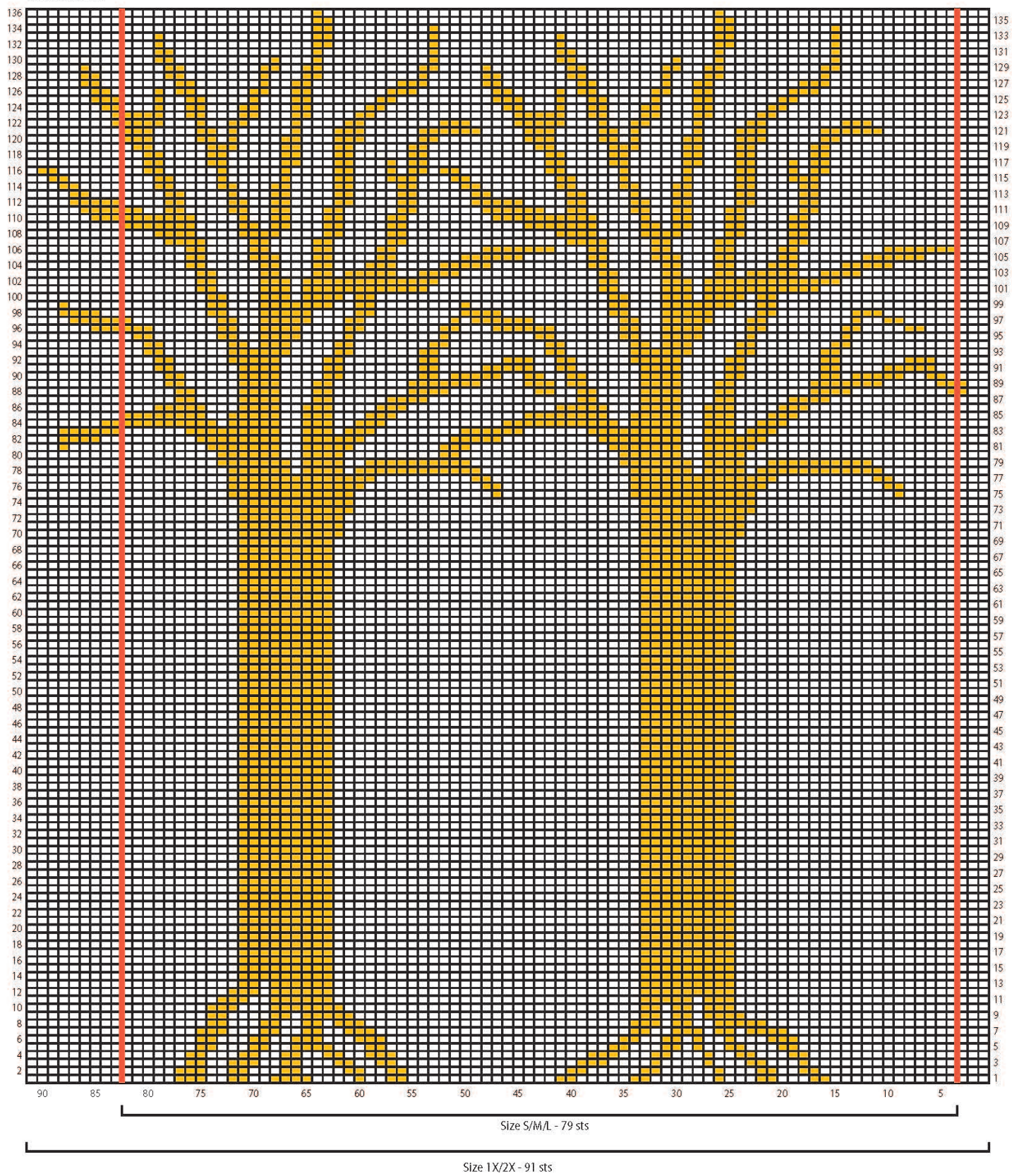
Copyright ©1998-2017 Lion Brand Yarn Company, all rights reserved.

No pattern or other material may be reproduced -- mechanically, electronically, or by any other means, including photocopying - without written permission of Lion Brand Yarn Company.

BACK CHART



FRONT CHART



KEY

- Work in St st (k on RS, p on WS)
- Work in Rev St st (p on RS, k on WS)