



Free Knitting Pattern
Lion Brand® Wool-Ease®
The Prep Dog Sweater
Pattern Number: L32372



Free Knitting Pattern from Lion Brand Yarn

Lion Brand® Wool-Ease®

The Prep Dog Sweater

Pattern Number: L32372

SKILL LEVEL: Easy (Level 2)

SIZE: Small, Medium

To fit dogs about 10-18 (18-29) lb.

Finished Neck Circumference About 13 1/2 (16) in. (34.5 (40.5) cm)

Finished Chest About 18 (22) in. (45.5 (56) cm)

Finished Length About 20 (22 1/2) in. (51 (57) cm)

Note: Pattern is written for smallest size with changes for larger sizes in parentheses. When only one number is given, it applies to all sizes. To follow pattern more easily, circle all numbers pertaining to your size before beginning.

CORRECTIONS: (applied Jan 24, 2015)

Chart corrected.

Shape Sweater

~~Rnds 5-22 (28): Rep last 2 rnds 8 (11) more times~~ — **Rep Rnds 3 and 4 until you have 80 (98) sts.**
~~when all increases have been completed~~

MATERIALS

- 620-099 Lion Brand Wool-Ease Yarn: Fisherman
1 Ball
- Lion Brand Double-Pointed Needles - Size 7
- Lion Brand Double-Pointed Needles - Size 8
- Boye Aluminum Circular Knitting Needles 16 inches Size 7
- Boye Aluminum Circular Knitting Needles 16 inches Size 8
- Lion Brand Cable Needles (Set of 2)
- Lion Brand Stitch Holders
- Lion Brand Split Ring Stitch Markers
- Lion Brand Large-Eye Blunt Needles (Set of 6)

- *Solid, Heather, Twist: 80% acrylic, 20% wool*
- *Sprinkles, Wheat, Mushroom, Rainbow Mist: 86% acrylic, 10% wool, 4% rayon*
- *Glitter/Multi-colors: 78% acrylic, 19% wool, 3% polyester*
- *Frosts: 70% acrylic, 20% wool, 10% polyamide*
- *Prints: 80% acrylic, 20% wool*

Solid, Heather, Twist:

Sprinkles, Wheat, Mushroom, Rainbow Mist:

Glitter/Multi-colors:

Frosts:

Prints:



GAUGE:

18 sts + 24 rnds = about 4 in. (10 cm) over pattern using larger needles.

When you match the gauge in a pattern, your project will be the size specified in the pattern and the materials specified in the pattern will be sufficient. The needle or hook size called for in the pattern is based on what the designer used, but it is not unusual for gauge to vary from person to person. If it takes you fewer stitches and rows to make your swatch, try using a smaller size hook or needles; if more stitches and rows, try a larger size hook or needles.

Making a Gauge Swatch

STITCH EXPLANATION:

2/2 LC (2 over 2 left cross) Slip 2 sts to cable needle and hold in front, k2, then k2 from cable needle.
2/2 RC (2 over 2 right cross) Slip 2 sts to cable needle and hold in back, k2, then k2 from cable needle.
2/1 LPC (2 over 1 left purl cross): Slip 2 sts to cable needle and hold in front, p1, then k2 from cable needle.
2/1 RPC (2 over 1 right purl cross): Slip 1 st to cable needle and hold in back, k2, then p1 from cable needle.
pfb (purl into front and back) Purl next st without removing it from left needle, then p through back of same st – 1 st increased.

PATTERN STITCHES

K1, p1 Rib worked in rnds (over an even number of sts)

Rnd 1: *K1, p1; rep from * to end of rnd.
Rep Rnd 1 for K1, p1 Rib worked in rnds.

Cable Pattern worked in rnds (over 16 sts)

Rnd 1: P1, 2/2 LC, p6, 2/2 LC, p1.
Rnd 2: P1, k4, p6, k4, p1.
Rnd 3: 2/1 RPC, 2/1 LPC, p4, 2/1 RPC, 2/1 LPC.
Rnd 4: K2, p2, k2, p4, k2, p2, k2.
Rnd 5: K2, p2, 2/1 LPC, p2, 2/1 RPC, p2, k2.
Rnd 6: K2, p3, k2, p2, k2, p3, k2.
Rnd 7: 2/1 LPC, p2, 2/1 LPC, 2/1 RPC, p2, 2/1 RPC.
Rnd 8: P1, k2, p3, k4, p3, k2, p1.
Rnd 9: P1, 2/1 LPC, p2, 2/2 RC, p2, 2/1 RPC, p1.
Rnd 10: P2, k2, p2, k4, p2, k2, p2.
Rnd 11: P2, (2/1 LPC, 2/1 RPC) twice, p2.
Rnd 12: P3, k4, p2, k4, p3.
Rnd 13: P3, 2/2 LC, p2, 2/2 LC, p3.
Rnd 14: P3, k4, p2, k4, p3.
Rnd 15: P2, (2/1 RPC, 2/1 LPC) twice, p2.
Rnd 16: P2, k2, p2, k4, p2, k2, p2.
Rnd 17: P1, 2/1 RPC, p2, 2/2 RC, p2, 2/1 LPC, p1.
Rnd 18: P1, k2, p3, k4, p3, k2, p1.
Rnd 19: 2/1 RPC, p2, 2/1 RPC, 2/1 LPC, p2, 2/1 LPC.
Rnd 20: K2, p3, k2, p2, k2, p3, k2.
Rnd 21: K2, p2, 2/1 RPC, p2, 2/1 LPC, p2, k2.
Rnd 22: K2, p2, k2, p4, k2, p2, k2.
Rnd 23: 2/1 LPC, 2/1 RPC, p4, 2/1 LPC, 2/1 RPC.
Rnd 24: P1, k4, p6, k4, p1.
Rep Rnds 1-24 for Cable pattern worked in rnds.

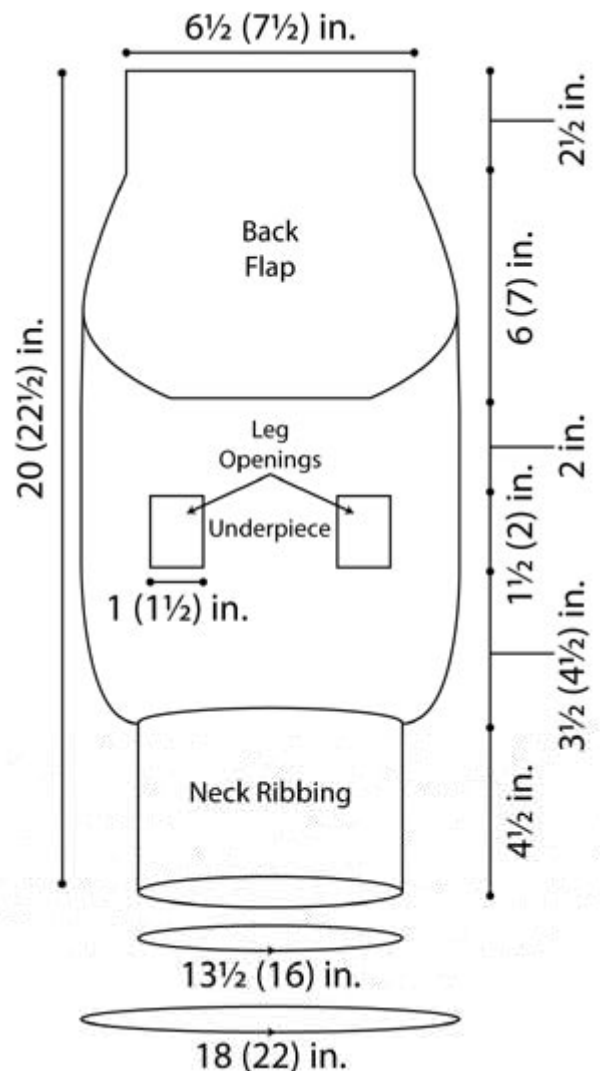
Cable Pattern worked in rows (over 16 sts)

Row 1 (RS): P1, 2/2 LC, p6, 2/2 LC, p1.
Row 2: K1, p4, k6, p4, k1.
Row 3: 2/1 RPC, 2/1 LPC, p4, 2/1 RPC, 2/1 LPC.
Row 4: P2, k2, p2, k4, p2, k2, p2.
Row 5: K2, p2, 2/1 LPC, p2, 2/1 RPC, p2, k2.
Row 6: P2, k3, p2, k2, p2, k3, p2.
Row 7: 2/1 LPC, p2, 2/1 LPC, 2/1 RPC, p2, 2/1 RPC.
Row 8: K1, p2, k3, p4, k3, p2, k1.
Row 9: P1, 2/1 LPC, p2, 2/2 RC, p2, 2/1 RPC, p1.
Row 10: K2, p2, k2, p4, k2, p2, k2.
Row 11: P2, (2/1 LPC, 2/1 RPC) twice, p2.
Row 12: K3, p4, k2, p4, k3.
Row 13: P3, 2/2 LC, p2, 2/2 LC, p3.
Row 14: K3, p4, k2, p4, k3.
Row 15: P2, (2/1 RPC, 2/1 LPC) twice, p2.
Row 16: K2, p2, k2, p4, k2, p2, k2.
Row 17: P1, 2/1 RPC, p2, 2/2 RC, p2, 2/1 LPC, p1.
Row 18: K1, p2, k3, p4, k3, p2, k1.
Row 19: 2/1 RPC, p2, 2/1 RPC, 2/1 LPC, p2, 2/1 LPC.
Row 20: P2, k3, p2, k2, p2, k3, p2.
Row 21: K2, p2, 2/1 RPC, p2, 2/1 LPC, p2, k2.
Row 22: P2, k2, p2, k4, p2, k2, p2.
Row 23: 2/1 LPC, 2/1 RPC, p4, 2/1 LPC, 2/1 RPC.

Row 24: K1, p4, k6, p4, k1.
Rep Rows 1-24 for Cable pattern worked in rows.

NOTES:

1. Sweater is worked in one piece beg at neck.
2. Piece is worked in the rnd to leg openings, then back and underpiece are worked separately back and forth in rows to make the leg openings. When leg openings are complete, underpiece and back are rejoined and worked in the rnd to the back flap. Back flap is worked back and forth in rows.
3. Cable pattern can be worked by following written instructions or Chart. When working in rnds, follow instructions for Cable pattern worked in rnds or read all rows of Chart from right to left. When working in rows, follow instructions for Cable pattern worked in rows or read RS rows of Chart from right to left and WS rows from left to right.
4. When knitting in the rnd on double pointed needles (dpns), your sts need to be divided fairly evenly among 4 needles. The total number of sts may not always be evenly divisible by the number of dpns that you are using – this is not a problem! Simply divide your sts as evenly as possible, you will still create a symmetrical ‘tube’ of knitting.



SWEATER

With smaller double pointed needles, cast on 60 (72) sts. Divide sts onto 4 needles with 15 (18) sts on each needle. Place marker for beg of rnd. Join by working the first st on the left hand needle with the working yarn from the right hand needle and being careful not to twist sts.

Neck Ribbing

Work in K1, p1 Rib worked in rnds for 27 rnds.

Shape Sweater

Change to larger double pointed needles.

Rnd 1 (Set-Up Rnd): P22 (28), place marker (pm), work Rnd 1 of Cable pattern worked in rnds over next 16 sts, pm, p22 (28).

Rnd 2: Pfb, p to marker, slip marker (sm), work next rnd of Cable pattern worked in rnds to next marker, sm, p to last st, pfb – 62 (74) sts.

Rnd 3: P to marker, sm, work next rnd of Cable pattern worked in rnds to next marker, sm, p to end of rnd.

Rnd 4: Pfb, p to marker, sm, work next rnd of Cable pattern worked in rnds to next marker, sm, p to last st, pfb – 64 (76) sts.

Rep Rnds 3 and 4 until you have 80 (98) sts.

Divide for Leg Openings

Next Rnd: P6 (8), bind off next 6 sts for leg opening, p to marker, sm, work next rnd of Cable pattern worked in rnds to next marker, sm, p to last 12 (14) sts, place last 56 (70) sts worked onto a holder for back, bind off next 6 sts for leg opening, p to end of rnd, remove beg of rnd marker, p6 (8) sts – 12 (16) sts rem for underpiece.

Underpiece

Note: The underpiece and back are now worked separately, back and forth in rows on circular needle as if working with straight needles.

Beg with a WS row, work in Rev St st (p on RS, k on WS) for 9 (11) rows.

Place underpiece sts on a st holder.

Back

Slip the 56 (70) back sts from holder onto larger circular needle, ready to work a WS row.

Next 9 (11) Rows: Work in Rev St st to marker, sm, work next row of Cable pattern worked in rows, sm, work in Rev St st to end of row.

Join Back and Underpiece

Next Rnd (RS): P across back sts to first marker, sm, work next rnd of Cable pattern worked in rnds, sm, p to end of back sts, cast on 6 sts, p12 (16) underpiece sts from holder, cast on 6 sts – 80 (98) sts.

Place marker for beg of rnd.

Join by working the first st on left hand needle with the working yarn from the right hand needle.

Next 11 Rnds: P to marker, sm, work next rnd of Cable pattern worked in rnds, sm, p to end of rnd.

Shape Back Flap

Next Rnd (RS): P to marker, sm, work next rnd of Cable pattern worked in rnds, sm, p23 (29), bind off 18 (24) sts, p3 (2), remove beg of rnd marker – 62 (74) sts.

Cut yarn and rejoin at beg of back sts, ready to work a WS row.

Note: Back flap is now worked back and forth in rows.

Next 2 Rows: Work in Rev St st to marker, sm, work next row of Cable pattern worked in rows, sm, work in Rev St st to end of row.

Next Row (WS): K2tog, k to marker, sm, work next row of Cable pattern worked in rows, sm, k to last 2 sts, k2tog – 60 (72) sts.

Next Row: P to marker, sm, work next row of Cable pattern worked in rows, sm, p to end of row Rep last 2 rows 15 (19) more times – 30 (34) sts when all decreases have been completed.

Next 9 Rows: Work in Rev St st to marker, sm, work next row of Cable pattern worked in rows, sm, work in Rev St st to end of row.

Change to smaller circular needle.

Lower Body Ribbing

From RS, k30 (34) rem back flap sts, pick up and k80 (98) sts evenly spaced down side edge of back flap across underpiece and up other side of back flap – 110 (132) sts.

Pm for beg of rnd.

Join by working the first st on the left hand needle with the working yarn from the right hand needle.

Work in K1, p1 Rib worked in rnds for 5 rnds.

Bind off.

FINISHING

Leg Ribbing

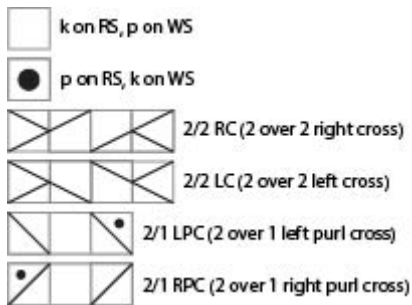
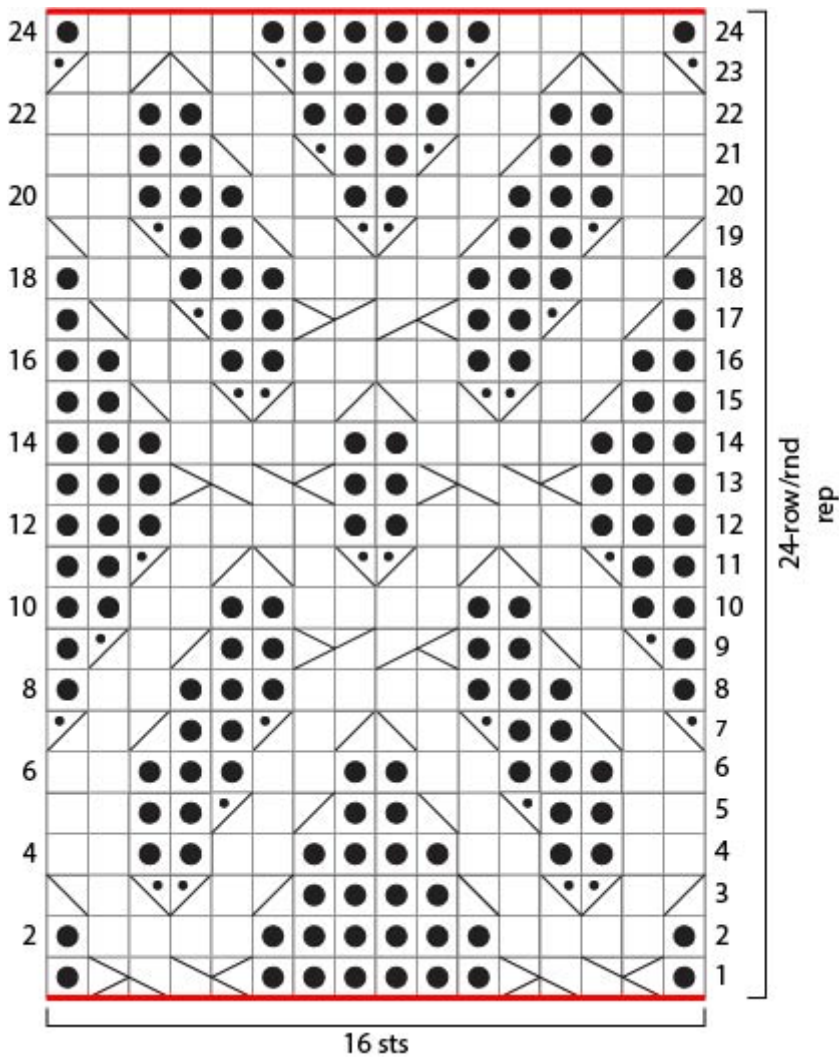
From RS with smaller double pointed needles, pick up and k32 (36) sts evenly spaced around one leg opening. Pm for beg of rnd. Join by working the first st on left hand needle with the working yarn from the right hand needle.

Work in K1, p1 Rib worked in rnds for 5 rnds.

Bind off.

Rep on opposite leg opening.

Weave in ends.



ABBREVIATIONS / REFERENCES

Click for explanation and illustration

<u>beg</u> = begin(s)(ning)	<u>dpn(s)</u> = double pointed needle(s)
<u>k</u> = knit	<u>k2tog</u> = knit 2 together
<u>p</u> = purl	<u>rem</u> = remain(s)(ing)
<u>rep</u> = repeat(s)(ing)	<u>Rev St st</u> = reverse stockinette stitch
<u>rnd(s)</u> = round(s)	<u>st(s)</u> = stitch(es)
<u>WS</u> = wrong side	

Learn to knit instructions: <http://www.lionbrand.com/learn/how-to-knit>

We want your project to be a success! If you need help with this or any other Lion Brand pattern, e-mail support is available 7 days per week. Just click [here](#) to explain your problem and someone will help you!

**For thousands of free patterns, visit our website www.LionBrand.com
To order visit our website www.lionbrand.com or call: (800) 258-YARN (9276) any time!**

**When in New York City, visit the Lion Brand Yarn Studio where we have the largest selection of our yarns
anywhere and over 100 classes and events monthly.
34 West 15th Street, NY, NY 10011**

Copyright ©1998-2016 Lion Brand Yarn Company, all rights reserved. No pattern or other material may be reproduced -- mechanically, electronically, or by any other means, including photocopying -- without written permission of Lion Brand Yarn Company.