



**Free Knitting Pattern**  
**Lion Brand® LB Collection® Pure Wool**  
**Fisherman's Sampler Afghan**  
Pattern Number: L40380



*Designed by Irina Poludnenko.*

# Free Knitting Pattern from Lion Brand Yarn

## Lion Brand® LB Collection® Pure Wool

### Fisherman's Sampler Afghan

Pattern Number: L40380

**SKILL LEVEL:** Intermediate (Level 3)

**SIZE:** One Size

About 40 x 50 in. (101.5 x 127 cm)

**CORRECTIONS:** None as of Jul 15, 2016. To check for later updates, click [here](#).

#### **MATERIALS**

- 489-098 Lion Brand LB Collection Pure Wool Yarn: Natural  
11 Balls
- Lion Brand Cable Needles (Set of 2)
- Lion Brand Large-Eye Blunt Needles (Set of 6)
- Additional Materials  
Circular knitting needle size 8 (5 mm), 40 in. (101.5 cm) long

*\*LB Collection Pure Wool (Article #489). 100% Wool; package size: 3.50oz/100.00 gr. (180yds/165m) pull skeins*



#### **GAUGE:**

23 sts = about 4 in. (10 cm) over Cable Pattern I.

When you match the gauge in a pattern, your project will be the size specified in the pattern and the materials specified in the pattern will be sufficient. The needle or hook size called for in the pattern is based on what the designer used, but it is not unusual for gauge to vary from person to person. If it takes you fewer stitches and rows to make your swatch, try using a smaller size hook or needles; if more stitches and rows, try a larger size hook or needles.

Making a Gauge Swatch

#### **STITCH EXPLANATION:**

**2/1 LPC (2 over 1 left purl cross)** Slip 2 sts to cable needle and hold in front, p1, then k2 from cable needle.

**2/1 RPC (2 over 1 right purl cross)** Slip 1 st to cable needle and hold in back, k2, then p1 from cable needle.

**3/3 LC (3 over 3 left cross)** Slip 3 sts to cable needle and hold in front, k3, then k3 from cable needle.

**3/3 RC (3 over 3 right cross)** Slip 3 sts to cable needle and hold in back, k3, then k3 from cable needle.

**3/4 PLC (purl 3 over 4 left cross)** Slip 3 sts to cable needle and hold in front, p4, then p3 from cable needle.

**3/4 PRC (purl 3 over 4 right cross)** Slip 4 sts to cable needle and hold in back, p3, then p4 from cable needle.

#### **PATTERN STITCHES**

**Cable Pattern I (worked over a multiple of 14 sts + 2 additional sts)**

**Row 1 (RS):** K1 (edge st), \*p1, k12, p1; rep from \* to last st, k1 (edge st).

**Row 2:** K1, \*k1, p12, k1; rep from \* to last st, k1.

**Row 3:** K1, \*p1, 3/3 RC, 3/3 LC, p1; rep from \* to last st, k1.

**Row 4:** Rep Row 2.

**Rows 5 and 6:** Rep Rows 1 and 2.

**Row 7:** Rep Row 1.

**Row 8:** K1, \*k1, p3, k6, p3, k1; rep from \* to last st, k1.

**Rows 9-12:** Rep Rows 7 and 8 twice.

Rep Rows 1-12 for Cable Pattern I.

**Cable Pattern II (worked over a multiple of 14 sts + 2 additional sts)**

**Row 1 (RS):** K1, \*p2, (k2, p2) 3 times; rep from \* to last st, k1.

**Row 2:** K1, \*k2, (p2, k2) 3 times; rep from \* to last st, k1.

**Rows 3 and 4:** Rep Rows 1 and 2.

**Row 5:** K1, \*p2, 2/1 LPC, p1, k2, p1, 2/1 RPC, p2; rep from \* to last st, k1.

**Row 6:** K1, \*k3, (p2, k1) twice, p2, k3; rep from \* to last st, k1.

**Row 7:** K1, \*p3, 2/1 LPC, k2, 2/1 RPC, p3; rep from \* to last st, k1.

**Row 8:** K1, \*k4, p6, k4; rep from \* to last st, k1.

**Row 9:** K1, \*p4, 3/3 RC, p4; rep from \* to last st, k1.

**Row 10:** Rep Row 8.

**Row 11:** K1, \*p4, k6, p4; rep from \* to last st, k1.

**Rows 12-14:** Rep Rows 8-10.

**Row 15:** K1, \*p3, 2/1 RPC, k2, 2/1 LPC, p3; rep from \* to last st, k1.

**Row 16:** Rep Row 6.

**Row 17:** K1, \*p2, 2/1 RPC, p1, k2, p1, 2/1 LPC, p2; rep from \* to last st, k1.

**Row 18:** Rep Row 2.

**Rows 19-22:** Rep Rows 1 and 2 twice.

Rep Rows 1-22 for Cable Pattern II.

**Cable Pattern III (worked over a multiple of 14 sts + 2 additional sts)**

**Row 1 (RS):** K1, \*p1, k12, p1; rep from \* to last st, k1.

**Row 2:** K1, \*k1, p12, k1; rep from \* to last st, k1.

**Row 3:** K1, \*p1, k3, 3/3 RC, k3, p1; rep from \* to last st, k1.

**Row 4:** Rep Row 2.

**Rows 5 and 6:** Rep Rows 1 and 2.

**Row 7:** K1, \*p1, 3/3 RC, 3/3 LC, p1; rep from \* to last st, k1.

**Rows 8-10:** Rep Rows 4-6.

Rep Rows 1-10 for Cable Pattern III.

**Cable Pattern IV (worked over a multiple of 16 sts + 2 additional sts)**

**Row 1 (RS):** K1, \*k1, p4, k2, p2, k2, p4, k1; rep from \* to last st, k1.

**Row 2:** K1, \*p1, k4, p2, k2, p2, k4, p1; rep from \* to last st, k1.

**Rows 3-8:** Rep Rows 1 and 2 three times.

**Row 9:** K1, \*k1, 3/4 PRC, 3/4 PLC, k1; rep from \* to last st, k1.

**Row 10:** Rep Row 2.

**Rows 11-16:** Rep Rows 1 and 2 three times.

Rep Rows 1-16 for Cable Pattern IV.

**K2, p2 Rib (worked over a multiple of 4 sts)**

**Row 1 (WS):** P3, \*k2, p2; rep from \* to last st, p1.

**Row 2:** K the knit sts and p the purl sts.

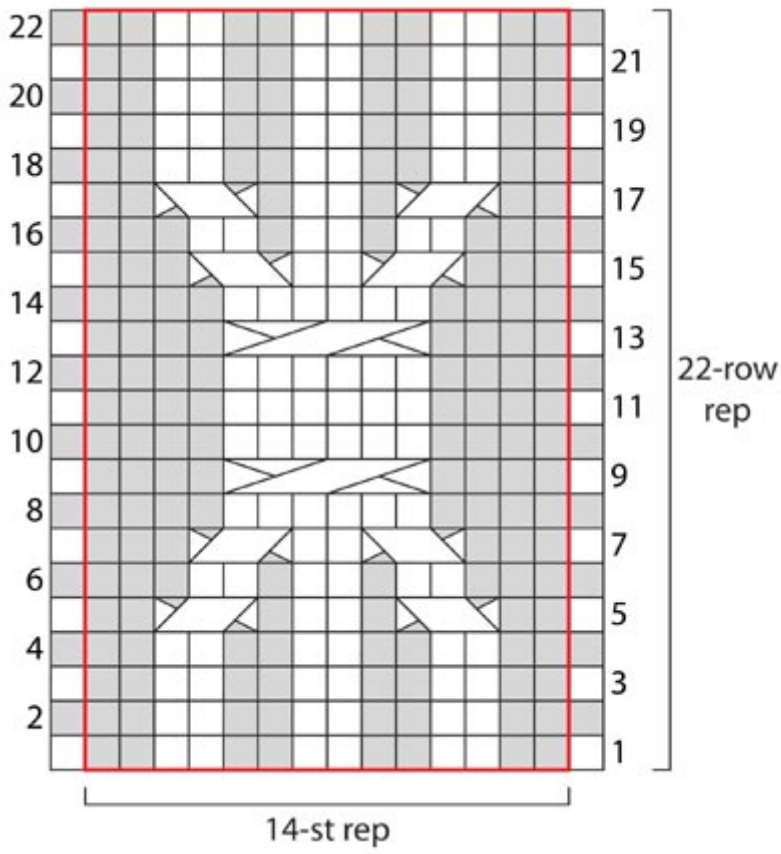
Rep Row 2 for K2, p2 Rib.

**NOTES:**

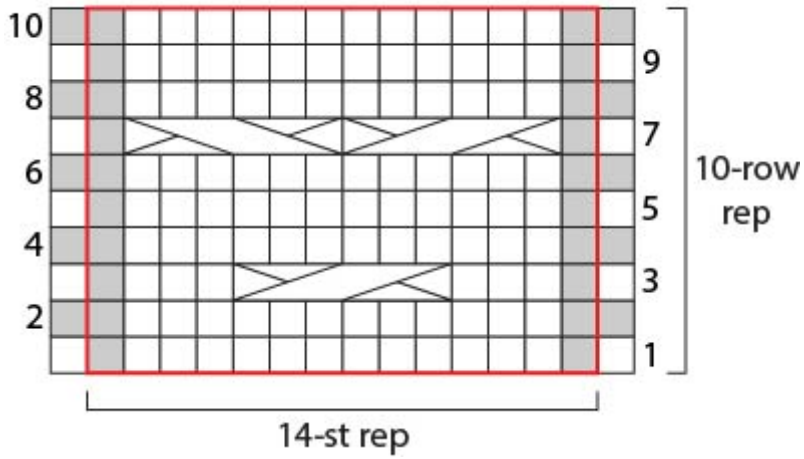
1. Afghan is worked in Panels. Panel I is worked first, then Panels II-VI are worked from stitches picked up across previous Panels.
2. When all Panels have been completed, sts for borders are picked up along each edge of Afghan.
3. Refer to the Assembly Diagram as you work. The diagram makes it easy for you to see where to pick up stitches.
4. Panels are worked in Cable patterns and borders are worked in rib.
5. Cable patterns can be worked by following the written instructions or the charts. When working from charts, read RS rows from right to left and WS rows from left to right.
6. The first and last st of each Panel is worked in Garter st (k every row) to make edge sts. These edge sts create a neat edge and makes it easier to pick up sts.
7. When instructions say to bind off in pattern, this means that you should work the next row (or specified row) of the pattern, binding off as you work.
8. A circular needle is used to accommodate the large number of sts. Work back and forth in rows on the circular needle as if working on straight needles.
9. Because you're working in multiple cable patterns from picked up sts, piece may not lay flat until it is complete.



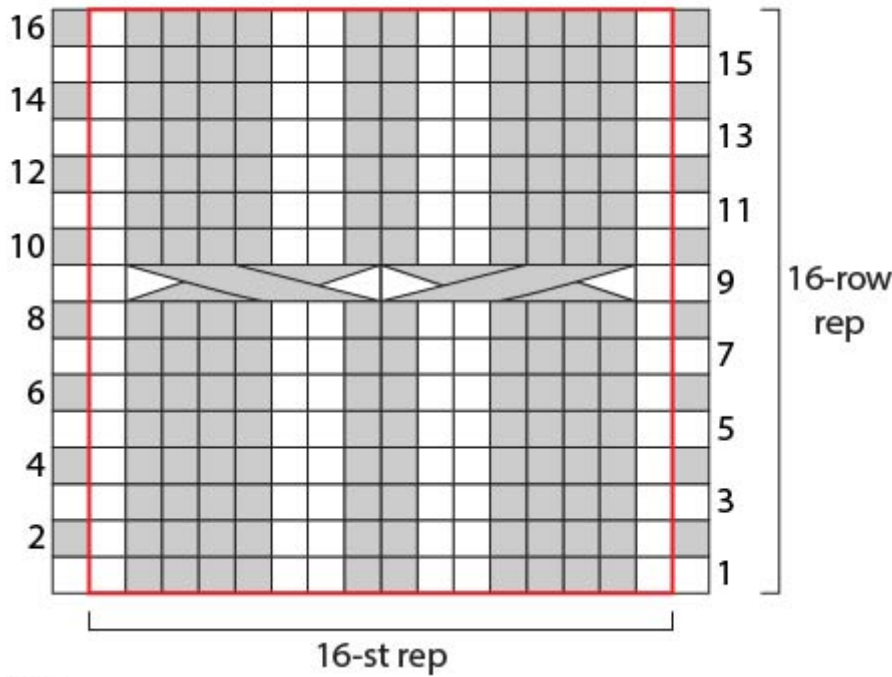
Cable Pattern II



Cable Pattern III



### Cable Pattern IV



#### Key


□ knit on RS, purl on WS

■ purl on RS, knit on WS

 3/3 LC (3 over 3 left cross)

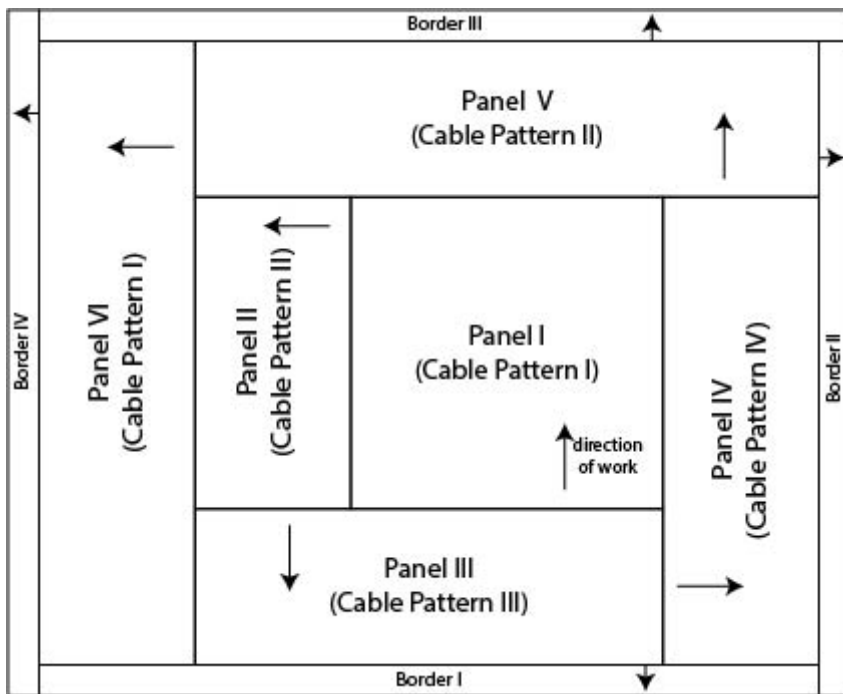
 3/3 RC (3 over 3 right cross)

 2/1 LPC (2 over 1 left purl cross)

 2/1 RPC (2 over 1 right purl cross)

 3/4 PLC (purl 3 over 4 left cross)

 3/4 PRC (purl 3 over 4 right cross)



### PANEL I

Cast on 114 sts.

Work in Cable Pattern I for 126 rows, end with a Row 6 as the last row you work.

Bind off in pattern.

### PANEL II

From RS, pick up and k114 sts evenly spaced along side edge of Panel I.

**Set-Up Row (WS):** K1 (edge st), \*k2, (p2, k2) 3 times; rep from \* to last st, k1 (edge st).

Work in Cable Pattern II for 79 rows, end with a Row 13 as the last row you work.

Bind off in pattern.

### PANEL III

From RS, pick up and k70 sts evenly spaced along side edge of Panel II, then pick up and k114 sts across cast-on edge of Panel I – 184 sts.

**Set-Up Row (WS):** K1 (edge st), \*k1, p12, k1; rep from \* to last st, k1 (edge st).

Work in Cable Pattern III for 70 rows – total of 7 reps of 10-row pattern.

Bind off in pattern.

### PANEL IV

From RS, pick up and k64 sts evenly spaced along side edge of Panel III, then pick up and k114 sts along side edge of Panel I – 178 sts.

**Set-Up Row (WS):** K1 (edge st), \*p1, k4, p2, k2, p2, k4, p1; rep from \* to last st, k1 (edge st).

Work in Cable Pattern IV for 48 rows – total of 3 reps of 16-row pattern.

Bind off in pattern.

### PANEL V

From RS, pick up and k50 sts evenly spaced along side edge of Panel IV, then pick up and k110 sts across bound-off edge of Panel I, and 66 sts along side edge of Panel II – 226 sts.

**Set-Up Row (WS):** K1 (edge st), \*k2, (p2, k2) 3 times; rep from \* to last st, k1 (edge st).

Work in Cable Pattern II for 44 rows – total of 2 reps of 22-row pattern.

Bind off in pattern.

### PANEL VI

From RS, pick up and k53 sts evenly spaced along side edge of Panel V, then pick up and k112 sts across bound-off edge of Panel II, and 61 sts along side edge of Panel III – 226 sts.

**Set-Up Row (WS):** K1 (edge st), \*k1, p12, k1; rep from \* to last st, k1 (edge st).

Work in Cable Pattern I for 52 rows, end with a Row 4 as the last row you work.

Bind off in pattern.

### BORDER I

From RS, with attached yarn, pick up and k42 sts evenly spaced along side edge of Panel VI, then pick up and k160 sts

across bound-off edge of Panel III, and 38 sts along side edge of Panel IV – 240 sts.  
Beg with Row 1, work in K2, p2 Rib for 5 rows.  
Bind off. Do not cut yarn.

#### **BORDER II**

From RS, with attached yarn, pick up and k5 sts evenly spaced along side edge of Border I, then pick up and k158 sts across bind-off edge of Panel IV, and 37 sts along side edge of Panel V – 200 sts.  
Beg with Row 1, work in K2, p2 Rib for 5 rows.  
Bind off. Do not cut yarn.

#### **BORDER III**

From RS, with attached yarn, pick up and k5 sts evenly spaced along side edge of Border II, then pick up and k197 sts across bound-off edge of Panel V, and 42 sts along side edge of Panel VI – 244 sts.  
Beg with Row 1, work in K2, p2 Rib for 5 rows.  
Bind off. Do not cut yarn.

#### **BORDER IV**

From RS, with attached yarn, pick up and k5 sts evenly spaced along side edge of Border III, then pick up and k194 sts across bound-off edge of Panel VI, and 5 sts along side edge of Border I – 204 sts.  
Beg with Row 1, work in K2, p2 Rib for 5 rows.  
Bind off.

#### **FINISHING**

Weave in ends.

<b>ABBREVIATIONS / REFERENCES</b>	
Click for explanation and illustration	
<u>beg = begin(s)(ning)</u>	<u>k = knit</u>
<u>p = purl</u>	<u>rep = repeat(s)(ing)</u>
<u>RS = right side</u>	<u>st(s) = stitch(es)</u>
<u>WS = wrong side</u>	

Learn to knit instructions:<http://www.lionbrand.com/learn/how-to-knit>

Every effort has been made to have the knitting and crochet instructions accurate and complete. We cannot be responsible for variance of individual knitters and crocheters, human errors, or typographical mistakes.

We want your project to be a success! If you need help with this or any other Lion Brand pattern, e-mail support is available 7 days per week. Just click [here](#) to explain your problem and someone will help you!

**For thousands of free patterns, visit our website [www.LionBrand.com](http://www.LionBrand.com)  
To order visit our website [www.lionbrand.com](http://www.lionbrand.com) or call: (800) 258-YARN (9276) any time!**

**When in New York City, visit the Lion Brand Yarn Studio where we have the largest selection of our yarns  
anywhere and over 100 classes and events monthly.  
34 West 15th Street, NY, NY 10011**

Copyright ©1998-2016 Lion Brand Yarn Company, all rights reserved. No pattern or other material may be reproduced -- mechanically, electronically, or by any other means, including photocopying -- without written permission of Lion Brand Yarn Company.