



Free Knitting Pattern
Lion Brand® Vanna's Choice® - Fun Fur®
Nordic Snowflake Stocking
Pattern Number: L40342



Designed by Nicky Epstein.

Free Knitting Pattern from Lion Brand Yarn

Lion Brand® Vanna's Choice® - Fun Fur®

Nordic Snowflake Stocking

Pattern Number: L40342

SKILL LEVEL: Easy + (Level 3)

SIZE: One Size

Finished Length of Leg About 18 in. (46 cm)

Finished Circumference of Leg About 15 in. (38 cm)

CORRECTIONS: None as of Oct 25, 2014. To check for later updates, click [here](#).

MATERIALS

- 860-109 Lion Brand Vanna's Choice Yarn:
Colonial Blue

1 Ball (A)

- 860-100 Lion Brand Vanna's Choice Yarn:
White

1 Ball (B)

- 320-100 Lion Brand Fun Fur Yarn: White

1 Ball (C)

- Lion Brand Knitting Needles- Size 9 [5.5 mm]

- Lion Brand Double-Pointed Needles - Size 9

set of 2 (for hanging loop)

- Lion Brand Split Ring Stitch Markers

- Lion Brand Stitch Holders

- Lion Brand Large-Eye Blunt Needles (Set of 6)

**Vanna's Choice® (Article #860). 100% Premium Acrylic*

400, 401, 403: 92% Acrylic, 8% Rayon

402: 96% Acrylic, 4% Rayon; package size: **Solids:** 3.5 oz (100 g), 170 yards (156 m)

Prints, Tweeds, & Heathers: 3 ozs (85 g) , 145 yards (133 meters)

Twists: 2.5 oz (70 g), 121 yards (111 meters)

Fun Fur (Article #320). 100% Polyester; package size: **Solids: 1.75 oz/50g; 64 yd/58m balls*

Prints: 1.5 oz/40g; 57 yd/52m balls

Exotics: 1.75 oz/50g; 55 yd/50m balls (**Note:** Exotics shades are lay flat to dry)



GAUGE:

16 sts + 22 rows = about 4 in. (10 cm) in St st (k on RS, p on WS).

When you match the gauge in a pattern, your project will be the size specified in the pattern and the materials specified in the pattern will be sufficient. The needle or hook size called for in the pattern is based on what the designer used, but it is not unusual for gauge to vary from person to person. If it takes you fewer stitches and rows to make your swatch, try using a smaller size hook or needles; if more stitches and rows, try a larger size hook or needles.

[Making a Gauge Swatch](#)

STITCH EXPLANATION:

skp Slip 1 as if to knit, knit 1, pass slip stitch over knit stitch – 1 st decreased.

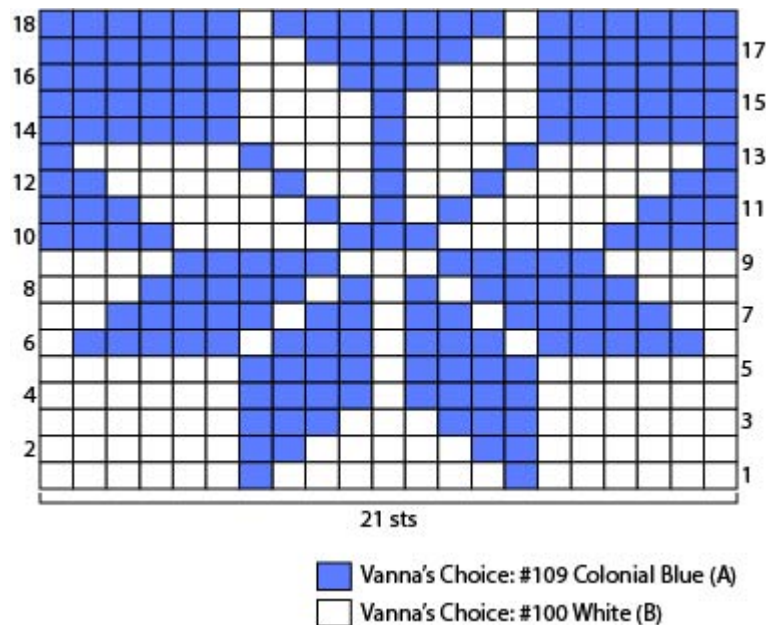
OPTIONAL TECHNIQUE EXPLANATION

3-Needle Bind Off

With RS together, hold in one hand 2 needles with equal number of sts on each. With 3rd needle, knit tog 1 st from each needle, *knit tog 1 st from each needle, pass first st worked over 2nd to bind off; rep from * across. Cut yarn and pull through last st to secure.

NOTES:

1. Stocking is worked in one piece from top down and then seamed.
2. Snowflake is worked by following a chart. When working from chart, read RS rows from right to left and WS rows from left to right.
3. Chart is worked on both the front and back of the Stocking at the same time. Carry yarn color not in use stranded across the WS of work for each chart, but do not carry yarn colors across between the front and back charts.
4. Wind A and B both into 2 separate balls before beginning.
5. Stocking heel is shaped with short rows. Short rows are not difficult to work, and making this Stocking is a great way to practice!



STOCKING

Cuff

With C, cast on 61 sts.

Work in Garter st (knit every row) until piece measures about 1 3/4 in. (4.5 cm) from beg.

Leg

Change to B and knit 2 rows.

With B, work in St st (k on RS, p on WS) until piece measures about 7 in. (18 cm) from beg, end with a WS (purl) row as the last row you work.

Snowflake Chart

Notes:

1. Continue in St st when working remainder of Stocking including chart.
2. Note that yarn colors are reversed at mid point of the chart.

Row 1 (RS): With B, k5, place marker (pm), work Row 1 of Snowflake Chart over next 21 sts, pm, with B,

k9, pm, with B and a separate ball of A work Row 1 of chart over next 21 sts, with B, k to end of row.

Rows 2-8: With B and working in St st, work to first marker, slip marker (sm), work next row of chart to next marker, sm, with B, work to next marker, sm, work next row of chart to next marker, sm, with B, work in St st to end of row.

Row 9 (Decrease Row – RS): With B, k1, skp, k to first marker, sm, work Row 9 of Snowflake Chart to next marker, sm, with B, k to next marker, sm, work Row 9 of Snowflake Chart to next marker, sm, with B, k to end of row – at the end of this row you will have 59 sts.

Rows 10-18: With A, work to first marker, sm, work next row of Snowflake Chart to next marker, sm, with A, work to next marker, sm, with A and a separate ball of B, work next row of Snowflake Chart to next marker, sm, with A, work to end of row.

Chart is now complete, cut B and continue with A only.

Decrease Row (RS): With A, k1, skp, k to last 3 sts, k2tog, k1 – 57 sts.

Continue in St st for 9 rows.

Rep Decrease Row – 55 sts.

Rep last 10 rows once more – 53 sts.

Work even (without increasing, decreasing or changing color) in St st for 3 rows.

Cut yarn.

Divide for Heel

Place first 13 sts onto a holder for right half of heel; place next 27 sts onto a 2nd holder for instep (top of foot) – 13 sts rem on needle for left half of heel.

Left Half of Heel

From WS, join B. You will be working on the 13 sts that rem on the needle with B only.

Row 1: Purl.

Row 2: Sl 1, k12.

Rows 3-18: Rep Rows 1 and 2.

Short Row Shaping Note: Short rows are rows that are worked over a portion of the sts in a row, leaving the remaining sts unworked.

To work short rows, the pattern instructions will tell you to 'turn' before you reach the end of the row.

Short Row 1: P2, p2tog, p1, turn (8 sts left unworked).

Short Row 2: Sl 1, k3, turn.

Short Row 3: P3, p2tog, p1, turn (6 sts left unworked).

Short Row 4: Sl 1, k4, turn.

Short Row 5: P4, p2tog, p1, turn (4 sts left unworked).

Short Row 6: Sl 1, k5, turn.

Short Row 7: P5, p2tog, p1, turn (2 sts left unworked).

Short Row 8: Sl 1, k6, turn.

Short Row 9: P6, p2tog, p1 – 8 sts rem.

Cut yarn and place rem sts onto a holder.

Right Half of Heel

Return the 13 sts for right half of heel to the needle, so that you are ready to work a RS row.

Join B.

Row 1: Knit.

Row 2: Sl 1, p12.

Rows 3-18: Rep Rows 1 and 2.

Short Row Shaping

Short Row 1: K2, skp, k1, turn (8 sts left unworked).

Short Row 2: Sl 1, p3, turn.

Short Row 3: K3, skp, k1, turn (6 sts left unworked).

Short Row 4: Sl 1, p4, turn.

Short Row 5: K4, skp, k1, turn (4 sts left unworked).

Short Row 6: Sl 1, p5, turn.

Short Row 7: K5, skp, k1, turn (2 sts left unworked).

Short Row 8: Sl 1, p6, turn.

Short Row 9: K6, skp, k1 – 8 sts rem.

Cut yarn.

Joining Row: From RS with A, pick up and k9 sts evenly spaced along side edge of right half of heel; k27 instep sts from holder, pick up and k9 sts evenly spaced along side edge of left half of heel, k8 sts for left

half of heel from holder – 61 sts total.

Purl one row.

Shape Foot

Note: Foot is worked with A only.

Row 1 (RS): K14, k2tog, k29, skp, k14 – 59 sts.

Row 2: Purl.

Row 3: K13, k2tog, k29, skp, k13 – 57 sts.

Row 4: Purl.

Row 5: K12, k2tog, k29, skp, k12 – 55 sts.

Row 6: Purl.

Row 7: K11, k2tog, k29, skp, k11 – 53 sts.

Row 8: Purl.

Row 9: K10, k2tog, k29, skp, k10 – 51 sts.

Row 10: Purl.

Row 11: K9, k2tog, k29, skp, k9 – 49 sts.

Work even in St st for 25 rows.

Next Row (RS): K23, k2tog, k to end of row – 48 sts.

Next Row: Purl.

Note: The foot should measure about 7 in. (18 cm) long.

Cut yarn.

Toe

Join B.

Work with B only.

Row 1 (RS): K9, k2tog, place marker (pm), k2, skp, k18, k2tog, pm, k2, skp, k9 – 44 sts.

Row 2: Purl.

Row 3: K to 2 sts before first marker, k2tog, slip marker (sm), k2, skp, k to 2 sts before next marker, k2tog, sm, k2, skp, k to end of row – 40 sts.

Rows 4-15: Rep Rows 2 and 3 – 16 sts rem at the end of Row 15.

Close Toe

Note: Closing the Stocking toe by grafting the sts tog creates a beautiful, seamless look. The detailed instructions that follow explain how to graft – it's not difficult! Grafting the sts tog is the technique used in sock knitting - most people do not want to have a seam across their toes. Since this is a Stocking, not an actual sock, if you prefer, you can simply join the sts using the 3-needle bind off (explanation at the beginning of this pattern).

From WS, place first 4 sts on a st holder, place next 8 sts on to a needle, place rem 4 sts on a 2nd st holder. From RS, place 4 sts from first holder on 2nd needle, then place 4 sts from 2nd holder on same needle. **Note:** This arrangement of sts will place the side edges of the Stocking at the center of the 2nd needle.

Turn work so that points of both needles are at right edge.

Cut yarn, leaving about 14 in. (35.5 cm) tail for grafting edges of toe tog. Thread tail onto yarn needle.

Weave yarn using same tension as for knit sts, as follows:

1. Insert yarn needle through first st on front needle as if to knit and slip st off needle.
2. Insert yarn needle through 2nd st on front needle as if to purl and leave st on needle.
3. Insert yarn needle through first st on back needle as if to purl and slip st of needle.
4. Insert yarn needle through 2nd st on back needle as if to knit and leave st on needle.

Rep steps 1-4 until all sts are joined. Knot and weave in end securely. **Note:** If desired, 3-Needle Bind-Off can be used instead of grafting toe.

FINISHING

sew back and foot seams.

Hanging Loop

With 2 double pointed needles and B, cast on 5 sts. Knit the 5 sts. Do not turn work. *Slide sts to other end of needle and knit them, pulling yarn tightly across the back of the work, (do not turn work); rep from * until piece measures about 5 in. (12.5 cm) long.

Next Row (RS): Skp, k1, k2tog – 3 sts.

Next Row: P3tog.

Fasten off.

Fold piece in half. Sew ends to Stocking at seam.
Weave in ends.

ABBREVIATIONS / REFERENCES	
Click for explanation and illustration	
<u>beg = begin(s)(ning)</u>	<u>k = knit</u>
<u>k2tog = knit 2 together</u>	<u>p = purl</u>
<u>p2tog = purl 2 together</u>	<u>p3tog = purl 3 together</u>
<u>rem = remain(s)(ing)</u>	<u>rep = repeat(s)(ing)</u>
<u>RS = right side</u>	<u>sl = slip</u>
<u>St st = Stockinette stitch</u>	<u>st(s) = stitch(es)</u>
<u>tog = together</u>	<u>WS = wrong side</u>

Learn to knit instructions: <http://learnToKnit.LionBrand.com>

Every effort has been made to have the knitting and crochet instructions accurate and complete. We cannot be responsible for variance of individual knitters and crocheters, human errors, or typographical mistakes.

We want your project to be a success! If you need help with this or any other Lion Brand pattern, e-mail support is available 7 days per week. Just click [here](#) to explain your problem and someone will help you!

For thousands of free patterns, visit our website www.LionBrand.com

To order visit our website www.lionbrand.com or call: (800) 258-YARN (9276) any time!

When in New York City, visit the Lion Brand Yarn Studio where we have the largest selection of our yarns anywhere and over 100 classes and events monthly.

34 West 15th Street, NY, NY 10011

Copyright ©1998-2014 Lion Brand Yarn Company, all rights reserved. No pattern or other material may be reproduced -- mechanically, electronically, or by any other means, including photocopying -- without written permission of Lion Brand Yarn Company.