



Free Knitting Pattern
Lion Brand® Heartland®
Sky's The Limit #Scarfie
Pattern Number: L40589



Take your knitting to a new level with this cabled scarf made with Heartland. *Designed by Lisa Carnahan.*

Free Knitting Pattern from Lion Brand Yarn

Lion Brand® Heartland®

Sky's The Limit #Scarfie

Pattern Number: L40589

SKILL LEVEL: Easy + (Level 3)

SIZE: One Size

About 7 x 72 in. (18 x 183 cm)

CORRECTIONS: (applied)

1. Scarfie is worked **all in one piece**, in 3 sections.

MATERIALS

- 136-109 Lion Brand Heartland Yarn: Olympic
2 Balls
- Lion Brand Knitting Needles- Size 9 [5.5 mm]
- Lion Brand Cable Needles (Set of 2)
- Lion Brand Large-Eye Blunt Needles (Set of 6)

Heartland (Article #136). **Solids: 100% Acrylic
Tweeds: 94% Acrylic, 6% Rayon; package size:
Solids: 5oz/142g (251yd/230m)
Tweeds: 4oz/113g (200yd/183m)*



GAUGE:

38 sts = about 7 in. (18 cm) over Section 2.

When you match the gauge in a pattern, your project will be the size specified in the pattern and the materials specified in the pattern will be sufficient. The needle or hook size called for in the pattern is based on what the designer used, but it is not unusual for gauge to vary from person to person. If it takes you fewer stitches and rows to make your swatch, try using a smaller size hook or needles; if more stitches and rows, try a larger size hook or needles.

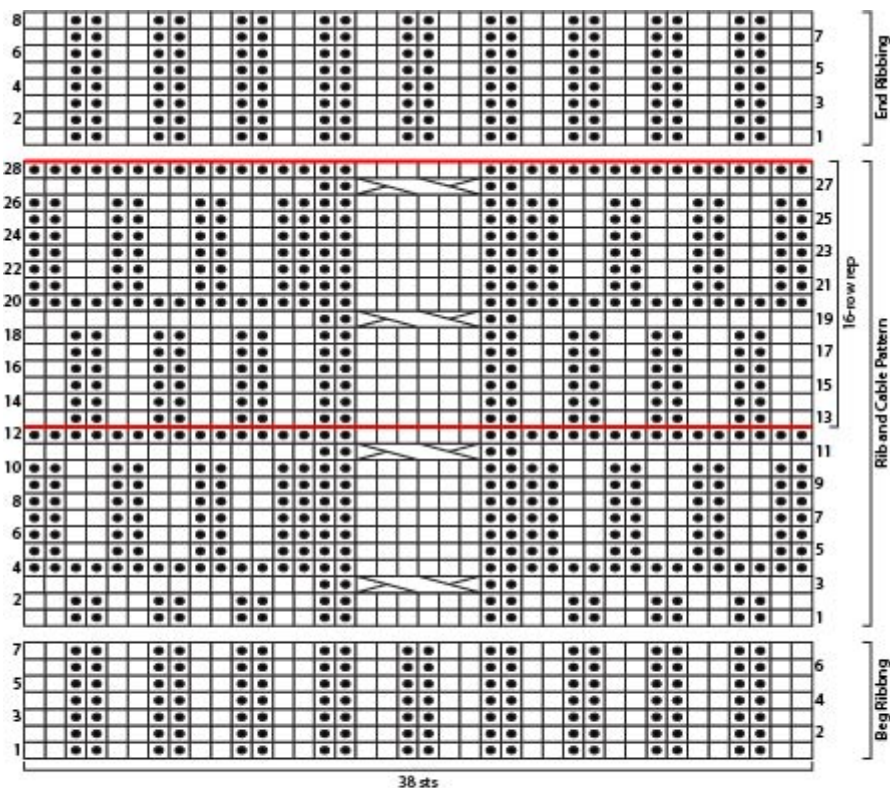
Making a Gauge Swatch

STITCH EXPLANATION:

3/3 LC (3 over 3 left cross) Slip 3 sts to cable needle and hold in front, k3, then k3 from cable needle.

NOTES:

1. Scarfie is worked in all one piece, in 3 sections.
2. Scarfie can be worked by following written instructions or by reading the chart. If working from chart, read RS rows from right to left and WS rows from left to right.



SCARFIE

Cast on 38 sts.

Section 1

Row 1 (WS): P2, *k2, p2; rep from * to end of row.

Row 2: K2, *p2, k2; rep from * to end of row.

Rows 3-6: Rep Rows 1 and 2 twice.

Row 7: Rep Row 1.

Section 2

Row 1 (RS): (K2, p2) 4 times, k6, (p2, k2) 4 times.

Row 2: (P2, k2) 4 times, p6, (k2, p2) 4 times.

Row 3: K14, p2, 3/3 LC, p2, k14.

Row 4: K16, p6, k16.

Row 5: (P2, k2) 3 times, p4, k6, p4, (k2, p2) 3 times.

Row 6: (K2, p2) 3 times, k4, p6, k4, (p2, k2) 3 times.

Rows 7-10: Rep Rows 5 and 6 twice.

Rows 11 and 12: Rep Rows 3 and 4.

Rows 13-16: Rep Rows 1 and 2 twice.

Rep Rows 1-16 until piece measures about 70 in. (178 cm) from beg, end with a Row 12 as the last row you work.

Section 3

Row 1: Rep Row 2 of Section 1.

Row 2: Rep Row 1 of Section 1.

Rows 3-8: Rep Rows 1 and 2 three times.

Row 9: Rep Row 1.

Bind off.

FINISHING

Weave in ends.

ABBREVIATIONS / REFERENCES

[Click for explanation and illustration](#)

<u>beg = begin(s)(ning)</u>	<u>k = knit</u>
<u>p = purl</u>	<u>rep = repeat(s)(ing)</u>
<u>RS = right side</u>	<u>st(s) = stitch(es)</u>
<u>WS = wrong side</u>	

Learn to knit instructions:[**http://www.lionbrand.com/learn/how-to-knit**](http://www.lionbrand.com/learn/how-to-knit)

Every effort has been made to have the knitting and crochet instructions accurate and complete. We cannot be responsible for variance of individual knitters and crocheters, human errors, or typographical mistakes.

We want your project to be a success! If you need help with this or any other Lion Brand pattern, e-mail support is available 7 days per week. Just click [here](#) to explain your problem and someone will help you!

For thousands of free patterns, visit our website www.LionBrand.com

To order visit our website www.lionbrand.com or call: (800) 258-YARN (9276) any time!

When in New York City, visit the Lion Brand Yarn Studio where we have the largest selection of our yarns anywhere and over 100 classes and events monthly.

34 West 15th Street, NY, NY 10011

Copyright ©1998-2016 Lion Brand Yarn Company, all rights reserved. No pattern or other material may be reproduced -- mechanically, electronically, or by any other means, including photocopying -- without written permission of Lion Brand Yarn Company.