



Free Knitting Pattern
Lion Brand[®] Heartland Thick & Quick[®]
Tricolor Scarf
Pattern Number: L40583



Designed by Margery Winter.

Free Knitting Pattern from Lion Brand Yarn

Lion Brand® Heartland Thick & Quick®

Tricolor Scarf

Pattern Number: L40583

SKILL LEVEL: Intermediate (Level 3)

SIZE: One Size

About 9 x 44 in. (23 x 112 cm)

CORRECTIONS: None as of Dec 12, 2014. To check for later updates, click [here](#).

MATERIALS

- 137-113 [Lion Brand Heartland Thick & Quick Yarn: Redwood](#)

1 Ball (A)

- 137-153 [Lion Brand Heartland Thick & Quick Yarn: Black Canyon](#)

1 Ball (B)

- 137-151 [Lion Brand Heartland Thick & Quick Yarn: Katmai](#)

1 Ball (C)

- [Lion Brand Knitting Needles Size 11 \[8 mm\]](#)
- [Lion Brand Large-Eye Blunt Needles \(Set of 6\)](#)

**Heartland Thick & Quick (Article #137). 100% acrylic; package size: 5.00oz/141.75 gr. (125yds/114m) pull skeins*



GAUGE:

12 sts + 16 rows = about 4 in. (10 cm) over Garter Rib pattern.

When you match the gauge in a pattern, your project will be the size specified in the pattern and the materials specified in the pattern will be sufficient. The needle or hook size called for in the pattern is based on what the designer used, but it is not unusual for gauge to vary from person to person. If it takes you fewer stitches and rows to make your swatch, try using a smaller size hook or needles; if more stitches and rows, try a larger size hook or needles.

[Making a Gauge Swatch](#)

STITCH EXPLANATION:

PATTERN STITCH

Garter Rib (over odd number of sts)

Row 1 (RS): Knit.

Row 2: K1, *p1, k1; rep from * across.

Rep Rows 1 and 2 for Garter Rib pattern.

NOTES:

1. Scarf is worked in 2 sections in intarsia colorwork.
2. To work in intarsia, use a separate ball of yarn for each color section. Do not carry colors across WS of work. When changing color, twist yarns on the WS to prevent holes.
3. The colorwork on the first section can be worked by following written instructions or by working in Garter Rib pattern and changing yarn color following First Section Chart.
4. Sts are picked up across one edge of the first section to beg the second section. Work the second section in Garter Rib pattern changing yarn color following Second Section Charts.
5. When working from charts, read RS rows from right to left and WS rows from left to right.

SCARF

First Section

With A, cast on 17 sts; with B, cast on 16 sts – you will have cast on a total of 33 sts.

Row 1 (RS): With B, k16; with A, k17.

Row 2: With A, k1, (p1, k1) 8 times, with B, (p1, k1) 8 times.

Rows 3-6: Rep Rows 1 and 2 twice.

Row 7: With C, k16; with A k17.

Row 8: With A, k1, (p1, k1) 8 times; with C, (p1, k1) 8 times.

Rows 9-16: Rep Rows 1-8.

Rows 17-24: Rep Rows 1 and 2 four times.

Rows 25 and 26: With C, work 2 rows in Garter Rib pattern.

Row 27: With B, k16; with C, k17.

Row 28: With C, k1, (p1, k1) 8 times; with B, (p1, k1) 8 times.

Rows 29-32: Rep Rows 27 and 28 twice.

Rows 33-36: Rep Rows 1 and 2 twice.

With B, bind off first 16 sts; with A, bind of remaining 17 sts.

Second Section

From RS, with B, beg at last bound-off st of first section, pick up and k27 sts evenly spaced across side edge of first section.

Purl 1 row.

Beg Chart Pattern Row 1 (RS): Work in Garter Rib, work Row 1 of Second Section Charts across.

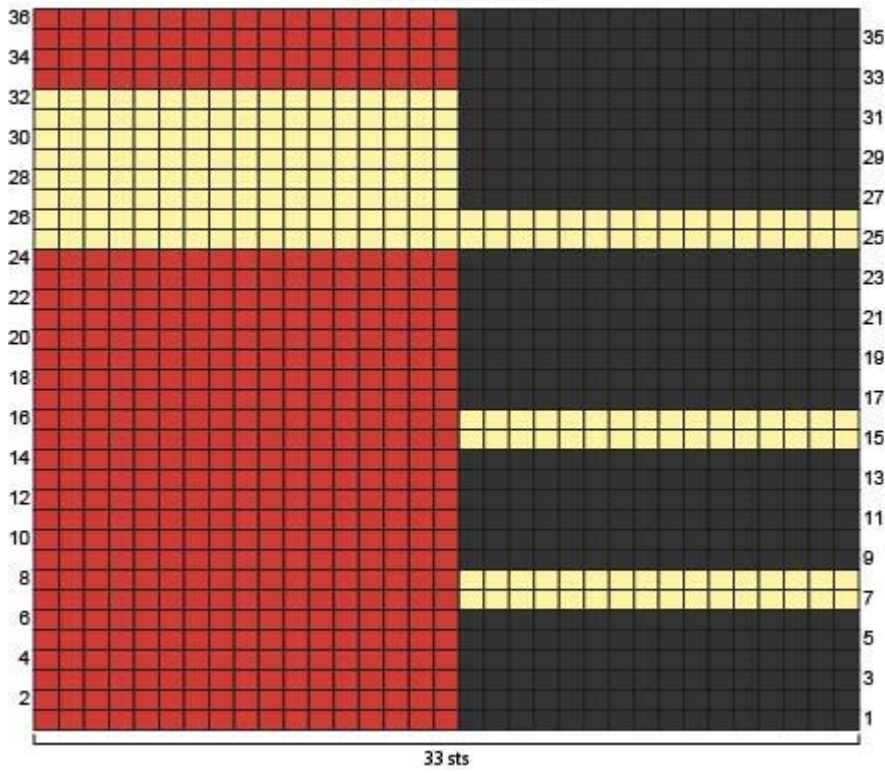
Continue in Garter Rib pattern, changing color following Second Section Charts, until Row 130 of Charts has been completed.

With B, bind off.

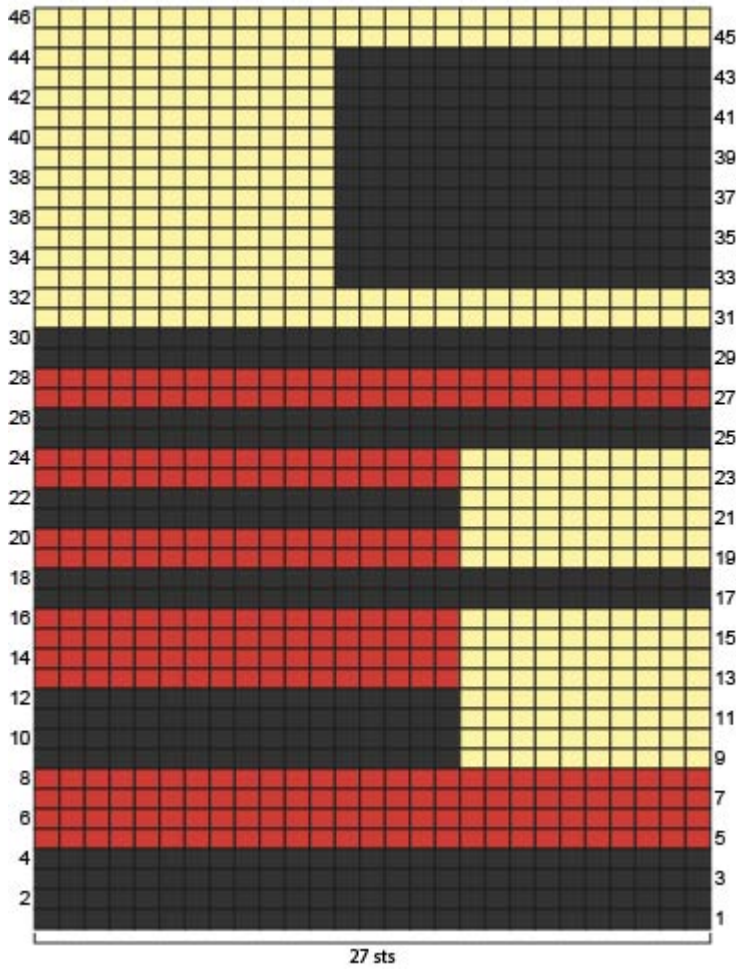
FINISHING

Weave in ends.

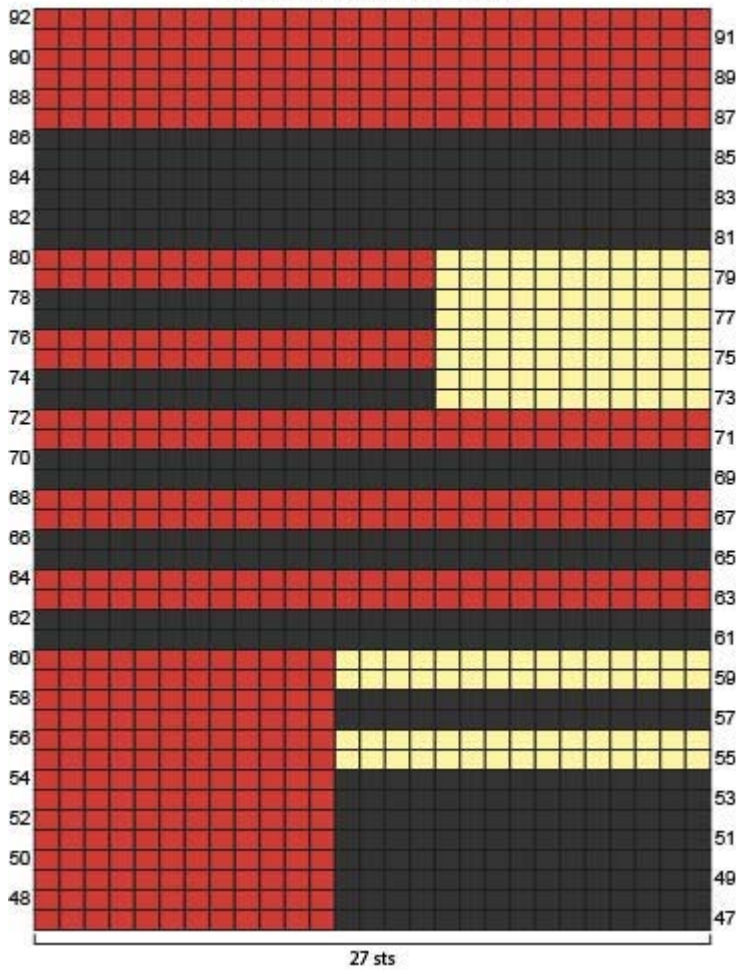
First Section Chart



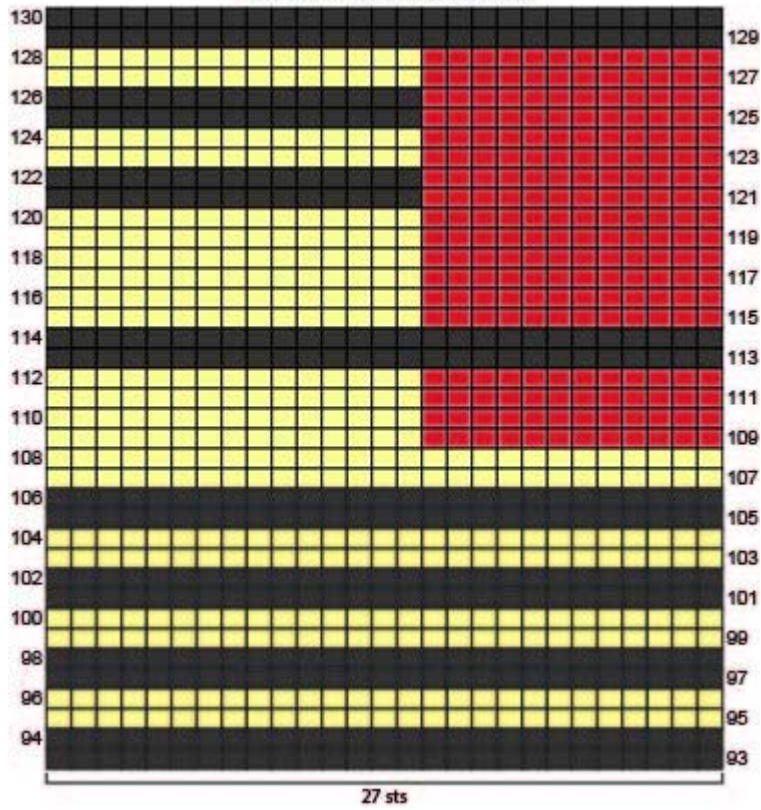
Second Section Chart - Part I



Second Section Chart - Part II



Second Section Chart - Part III



- #113 Redwood (A)
- #153 Black Canyon (B)
- #151 Katmai (C)

ABBREVIATIONS / REFERENCES	
Click for explanation and illustration	
<u>beg = begin(s)(ning)</u>	<u>k = knit</u>
<u>p = purl</u>	<u>rep = repeat(s)(ing)</u>
<u>RS = right side</u>	<u>st(s) = stitch(es)</u>

Learn to knit instructions: <http://learnToKnit.LionBrand.com>

Every effort has been made to have the knitting and crochet instructions accurate and complete. We cannot be responsible for variance of individual knitters and crocheters, human errors, or typographical mistakes.

We want your project to be a success! If you need help with this or any other Lion Brand pattern, e-mail support is available 7 days per week. Just click [here](#) to explain your problem and someone will help you!

For thousands of free patterns, visit our website www.LionBrand.com

To order visit our website www.lionbrand.com or call: (800) 258-YARN (9276) any time!

**When in New York City, visit the Lion Brand Yarn Studio where we have the largest selection of our yarns anywhere and over 100 classes and events monthly.
34 West 15th Street, NY, NY 10011**

Copyright ©1998-2014 Lion Brand Yarn Company, all rights reserved. No pattern or other material may be reproduced -- mechanically, electronically, or by any other means, including photocopying -- without written permission of Lion Brand Yarn Company.