



Free Knitting Pattern
Lion Brand® Zaps
Cabled Rectangles Poncho
Pattern Number: L40632



Designed by Lisa Carnahan.

Free Knitting Pattern from Lion Brand Yarn

Lion Brand® Zaps Cabled Rectangles Poncho Pattern Number: L40632

SKILL LEVEL: Easy + (Level 3)

SIZE: One Size

Finished Circumference at neck edge About 25 in. (63.5 cm)

Finished Circumference of lower edge About 98 in. (249 cm)

CORRECTIONS: (applied Oct 19, 2015)

RECTANGLES (make 2)

...

Row 9: K1, p2, k4, p3, k4, p2, k1 tbl, p1, 2/1 LPC, p2, 2/1 RPC, p1, k1 tbl, p2, k4, p3, k4, p2, k1.

MATERIALS

- 757-126 Lion Brand Zaps:

Espresso

8 Balls

- Lion Brand Knitting Needles
Size 15 [10 mm]

- Clover Bamboo Circular
Knitting Needles 16" Size 11

- Lion Brand Crochet Hook -
Size P-15 (10 mm)

- Lion Brand Cable Needles
(Set of 2)

- Lion Brand Split Ring Stitch
Markers

- Lion Brand Large-Eye Blunt
Needles (Set of 6)

**Zaps (Article #757). 100% Acrylic; package size:
3.50oz/100.00 gr. (87yds/80m) pull skeins*



GAUGE:

10 1/2 sts + 12 rows = about 4 in. (10 cm) in Cable pattern.

One Rectangle = 17 x 32 in. (43 x 81.5 cm).

When you match the gauge in a pattern, your project will be the size specified in the pattern and the materials specified in the pattern will be sufficient. The needle or hook size called for in the pattern is based on what the designer used, but it is not unusual for gauge to vary from person to person. If it takes you fewer stitches and rows to make your swatch, try using a smaller size hook or needles; if more stitches and rows, try a larger size hook or needles.

Making a Gauge Swatch

STITCH EXPLANATION:

2/2 RC (2 over 2 right cross) Slip 2 sts to cable needle and hold in back, k2, then k2 from cable needle.

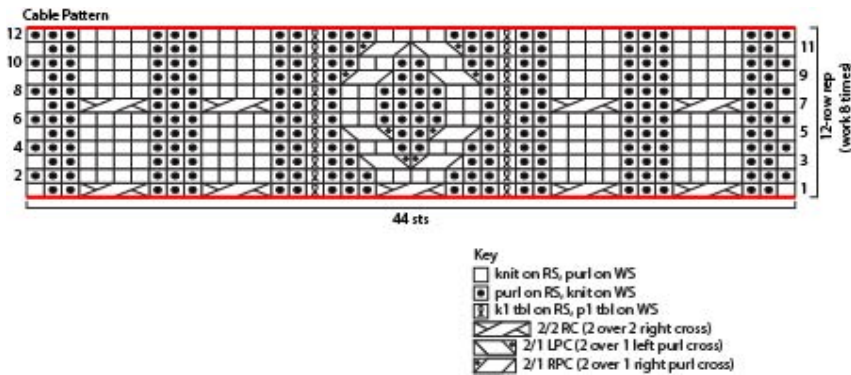
2/1 LPC (2 over 1 left purl cross): Slip 2 sts to cable needle and hold in front, p1, then k2 from cable needle.

2/1 RPC (2 over 1 right purl cross): Slip 1 st to cable needle and hold in back, k2, then p1 from cable needle.

pfb (purl into front and back) Purl next st without removing it from left needle, then p through back of same st – 1 st increased.

NOTES:

1. 2 Rectangles are worked separately, then sewn tog following a diagram to make Poncho.
2. Each rectangle is worked in Cable pattern following written instructions or by reading a chart. When working from chart, read RS rows from right to left and WS rows from left to right.



RECTANGLES (make 2)

With straight needles, cast on 39 sts.

Set-Up Row (WS): (K3, p1, pfb, p1) twice, k2, p1 tbl, k3, p1, pfb, p1, k3, p1 tbl, k2, (p1, pfb, p1, k3) twice – you will have 44 sts.

Cable Pattern

Row 1 (RS): K1, p2, 2/2 RC, p3, 2/2 RC, p2, k1 tbl, p3, 2/2 RC, p3, k1 tbl, p2, 2/2 RC, p3, 2/2 RC, p2, k1.

Row 2: (K3, p4) twice, k2, p1 tbl, k3, p4, k3, p1 tbl, k2, (p4, k3) twice.

Row 3: K1, p2, k4, p3, k4, p2, k1 tbl, p2, 2/1 RPC, 2/1 LPC, p2, k1 tbl, p2, k4, p3, k4, p2, k1.

Row 4: (K3, p4) twice, k2, p1 tbl, (k2, p2) twice, k2, p1 tbl, k2, (p4, k3) twice.

Row 5: K1, p2, k4, p3, k4, p2, k1 tbl, p1, 2/1 RPC, p2, 2/1 LPC, p1, k1 tbl, p2, k4, p3, k4, p2, k1.

Row 6: (K3, p4) twice, k2, p1 tbl, k1, p2, k4, p2, k1, p1 tbl, k2, (p4, k3) twice.

Row 7: K1, p2, 2/2 RC, p3, 2/2 RC, p2, k1 tbl, p1, k2, p4, k2, p1, k1 tbl, p2, 2/2 RC, p3, 2/2 RC, p2, k1.

Row 8: Rep Row 6.

Row 9: K1, p2, k4, p3, k4, p2, k1 tbl, p1, 2/1 LPC, p2, 2/1 RPC, p1, k1 tbl, p2, k4, p3, k4, p2, k1.

Row 10: Rep Row 4.

Row 11: K1, p2, k4, p3, k4, p2, k1 tbl, p2, 2/1 LPC, 2/1 RPC, p2, k1 tbl, p2, k4, p3, k4, p2, k1.

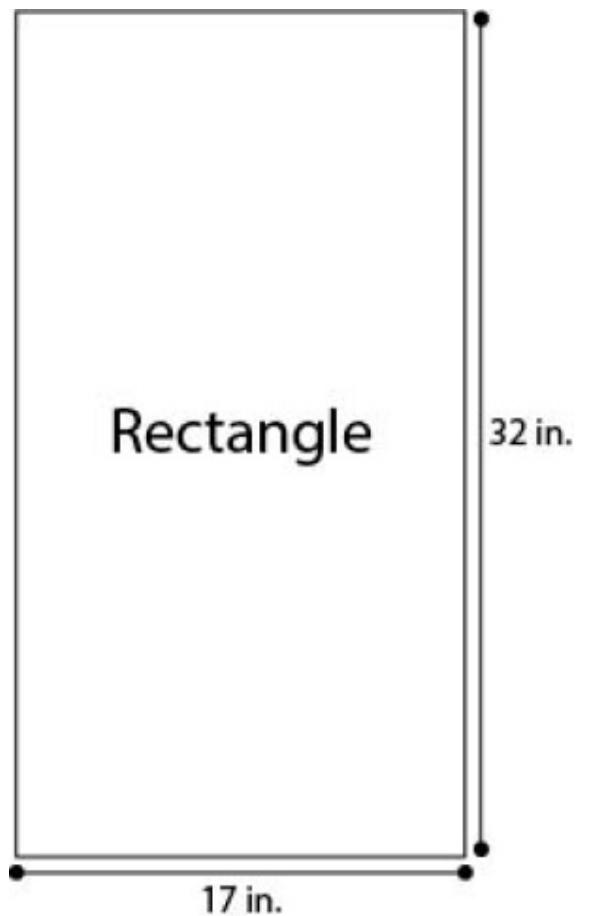
Row 12: Rep Row 2.

Rows 13-96: Rep Rows 1-12 seven times.

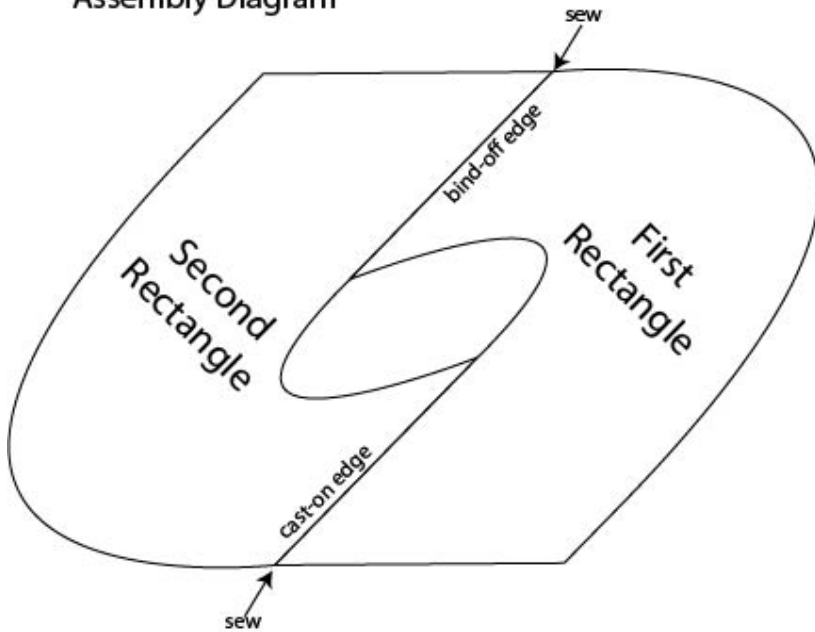
Row 97: Rep Row 1.

Row 98: (K3, p2tog, p2) twice, k2, p1 tbl, k3, p2tog, p2, k3, p1 tbl, k2, (p2tog, p2, k3) twice – 39 sts.

Bind off.



Assembly Diagram



FINISHING

Assembly

1. Lay Rectangles side by side onto a flat surface, with cast-on edges at bottom and bind-off edges at top.
2. Following diagram, bring the top of the first Rectangle towards the second Rectangle and sew bind-off edge of first Rectangle to side edge of second Rectangle.
3. Bring the lower portion of the second Rectangle towards the first Rectangle and sew cast-on edge of second Rectangle to side edge of first Rectangle.

Neckband

Rnd 1 (RS): From RS with circular needle, pick up and k74 sts spaced as evenly as possible around neck edge. Place marker for beg of rnd.

Join by working the first st on left hand needle with the working yarn from the right hand needle.

Rnds 2 and 3: Purl.

Rnd 4 (Decrease Rnd): [K2, k2tog] 18 times, k2 – 56 sts.

Rnd 5: *K1 tbl, p1; rep from * around.

Rep Rnd 5 for 3 in. (7.5 cm).

Bind off.

Fringe

Cut about 200 strands of yarn about 12 in. (30.5 cm) long. For each fringe, hold 4 strands of yarn tog and fold in half. Use crochet hook to draw fold through lower edge of Poncho, forming a loop. Pull ends of fringe through this loop. Pull to tighten. Rep to attach fringe spaced about 2 in. (5 cm) apart all the way around lower edge of Poncho. Trim fringe evenly.

Weave in ends.

ABBREVIATIONS / REFERENCES

Click for explanation and illustration

beg = begin(s)(ning)	k = knit
k2tog = knit 2 together	p = purl
p2tog = purl 2 together	rem = remain(s)(ing)
rep = repeat(s)(ing)	rnd(s) = round(s)
RS = right side	st(s) = stitch(es)
tbl = through the back loop	tog = together
WS = wrong side	

Learn to knit instructions: <http://learnToKnit.LionBrand.com>

Every effort has been made to have the knitting and crochet instructions accurate and complete. We cannot be responsible for variance of individual knitters and crocheters, human errors, or typographical mistakes.

We want your project to be a success! If you need help with this or any other Lion Brand pattern, e-mail support is available 7 days per week. Just click [here](#) to explain your problem and someone will help you!

For thousands of free patterns, visit our website www.LionBrand.com

To order visit our website www.lionbrand.com or call: (800) 258-YARN (9276) any time!

When in New York City, visit the Lion Brand Yarn Studio where we have the largest selection of our yarns anywhere and over 100 classes and events monthly.

34 West 15th Street, NY, NY 10011

Copyright ©1998-2015 Lion Brand Yarn Company, all rights reserved. No pattern or other material may be reproduced -- mechanically, electronically, or by any other means, including photocopying -- without written permission of Lion Brand Yarn Company.