



Free Knitting Pattern
Lion Brand® Wool-Ease® Thick & Quick®
Cropped Drop Stitch Pullover
Pattern Number: L40686



Designed by Vladimir Teriokhin.

Free Knitting Pattern from Lion Brand Yarn

Lion Brand® Wool-Ease® Thick & Quick®

Cropped Drop Stitch Pullover

Pattern Number: L40686

SKILL LEVEL: Intermediate (Level 3)

SIZE: XS/S, M/L, 1X/2X

XS/S (M/L, 1X/2X)

Finished Bust 39 (46, 54) in. (99 (117, 137) cm)

Finished Length 16 1/2 (18, 19 1/2) in. (42 (45.5, 49.5) cm)

Finished Waist 31 (38, 46) in. (78.5 (96.5, 117) cm)

Note: Pattern is written for smallest size with changes for larger sizes in parentheses. When only one number is given, it applies to all sizes. To follow pattern more easily, circle all numbers pertaining to your size before beginning.

CORRECTIONS: None as of Sep 16, 2016. To check for later updates, click [here](#).

MATERIALS

- 640-107 Lion Brand Wool-Ease Thick & Quick Yarn: Cobalt

4 6, 7 Balls

- Lion Brand Knitting Needles Size 11 [8 mm]

- Lion Brand Stitch Holders

- Lion Brand Split Ring Stitch Markers

- Lion Brand Large-Eye Blunt Needles (Set of 6)

**Wool-Ease Thick & Quick (Article #640). Solids, Heathers, Twists, Prints, Stripes: 80% Acrylic, 20% Wool; Wheat & Wood: 86% Acrylic; 10% Wool; 4% Rayon; Oatmeal & Barley & Grey Marble: 82% Acrylic; 10% Wool; 8% Rayon; Metallics: 79% Acrylic, 20% Wool, 1% Metallic Poly; package size: Solids, Heathers, Twists, Tweeds: 6 oz./170g (106 yd/97 m) Prints, Stripes: 5 oz./140g (87 yd/80 m) Metallics: 5 oz./140g (92 yd/84 m)*



GAUGE:

10 sts + 15 rows = about 4 in. (10 cm) in St st (k on RS, p on WS).

When you match the gauge in a pattern, your project will be the size specified in the pattern and the materials specified in the pattern will be sufficient. The needle or hook size called for in the pattern is based on what the designer used, but it is not unusual for gauge to vary from person to person. If it takes you fewer stitches and rows to make your swatch, try using a smaller size hook or needles; if more stitches and rows, try a larger size hook or needles.

Making a Gauge Swatch

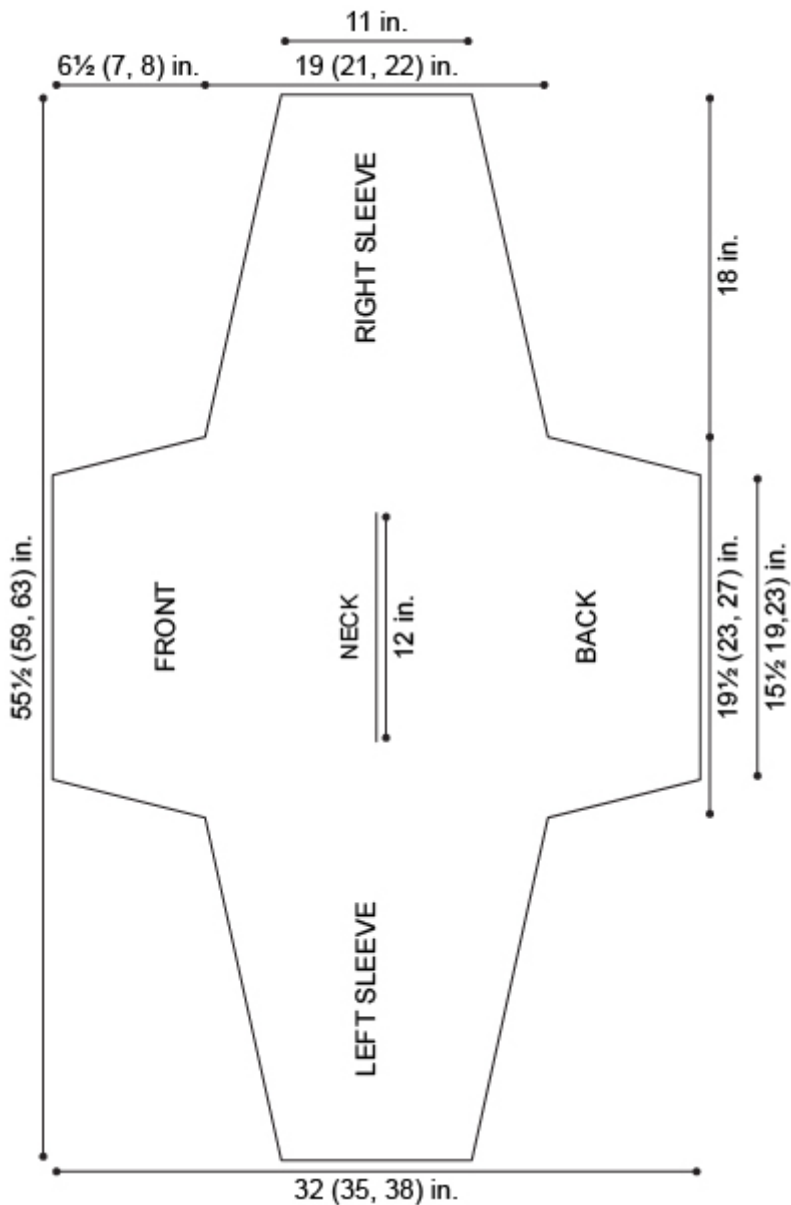
STITCH EXPLANATION:

M1 (make 1) An increase worked by lifting the horizontal strand lying between needles and placing it onto left needle. Knit this new stitch through the back loop – 1 st increased.

ssk (slip, slip, knit) Slip next 2 sts as if to knit, one at a time, to right needle; insert left needle into fronts of these 2 sts and knit them together – 1 st decreased.

NOTES:

1. Pullover is worked sideways in one piece from Left Sleeve to Right Sleeve.
2. To shape neck, the piece is divided and front and back are worked separately. They are then rejoined to finish the piece.
3. When binding off, sts are dropped to create a "ladder" effect.



PULLOVER

Left Sleeve

Cast on 25 sts.

Work in St st (k on RS, p on WS) until piece measures about 12 1/2 (11 1/2, 10 1/2) in. (32 (29, 26.5) cm) from beg, end with a WS row as the last row you work.

Shape Sleeve

Row 1 (RS): K2, M1, k to last 2 sts, M1, k2 – 27 sts.

Row 2: Purl.

Rep the last 2 rows 9 (11, 13) more times – you will have 45 (49, 53) sts after all incs have been worked.

Shape Body

Row 1 (RS): Cast on 4 (4, 5) sts, k to end of row – 49 (53, 58) sts.

Row 2: Cast on 4 (4, 5) sts, p to end of row – 53 (57, 63) sts.

Rows 3 and 4: Rep Rows 1 and 2 – 61 (65, 73) sts.

Row 5: Cast on 4 (5, 5) sts, k to end of row – 65 (70, 78) sts.

Row 6: Cast on 4 (5, 5) sts, p to end of row – 69 (75, 83) sts.

Rows 7 and 8: Rep Rows 5 and 6 – 77 (85, 93) sts.

Row 9: Knit.

Row 10: K4, p to last 4 sts, k4.

Rep the last 2 rows 2 (5, 9) more times.

Next Row (Inc): K37 (41, 45), M1, [k1, M1] twice, k to end of row – 80 (88, 96) sts.

Divide for Neck

Next row (WS): K4, p33 (37, 41), k3, slip rem 40 (44, 48) sts to a holder for back – 40 (44, 48) sts rem on needle for front.

Front

Row 1 (RS): Knit.

Row 2: K4, p to last 3 sts, k3.

Rep the last 2 rows 20 more times.

Slip these 40 (44, 48) sts for front to a separate holder and cut yarn.

Back

Place 40 (44, 48) sts from back holder onto the needle, and join yarn so that you are ready to work a WS row.

Row 1 (WS): K3, p33 (37, 41), k4.

Row 2: Knit.

Rep the last 2 rows 20 more times, then work Row 1 once more.

Rejoin Work

Next row (RS): K across 40 (44, 48) back sts, then k across 40 (44, 48) sts from front holder – you will have 80 (88, 96) sts at the end of this row.

Next row (Dec): K4, p33 (37, 41), p2tog 3 times, p to last 4 sts, k4 – 77 (85, 93) sts.

Next Row: Knit.

Next Row: K4, p to last 4 sts, k4.

Rep the last 2 rows 2 (5, 9) more times.

Shape Body

Row 1 (RS): Bind off 4 (5, 5) sts, k to end of row – 73 (80, 88) sts.

Row 2: Bind off 4 (5, 5) sts, p to end of row – 69 (75, 83) sts.

Rows 3 and 4: Rep Rows 1 and 2 – 61 (65, 73) sts.

Row 5: Bind off 4 (4, 5) sts, k to end of row – 57 (61, 68) sts.

Row 6: Bind off 4 (4, 5) sts, p to end of row – 53 (57, 63) sts.

Rows 7 and 8: Rep Rows 5 and 6 – 45 (49, 53) sts.

Shape Right Sleeve

Row 1 (Dec - RS): K1, ssk, k to last 3 sts, k2tog, k1 – 43 (47, 51) sts.

Row 2: Purl.

Rep the last 2 rows 9 (11, 13) more times – 25 sts.

Place markers at each end of last row.

Work in St st until piece measures about 12 1/2 (11 1/2, 10 1/2) in. (32 (29, 26.5) cm) from marked row, end with a WS row as the last row you work.

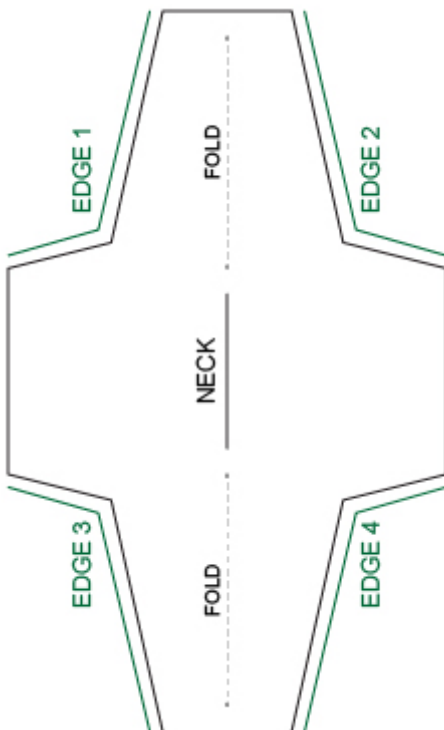
Bind off as follows:

Bind off 9 sts, *drop next st from left hand needle and allow to unravel all the way down to cast-on edge (to make a "ladder"), stretch the st on the right hand needle to about 1 in. (2.5 cm), bind off 3 sts; rep from * once more, bind off to end of row.

FINISHING

Following diagram, fold piece in half. Matching Edge 1 to Edge 2 and Edge 3 to Edge 4, sew side and sleeve seams.

Weave in ends.



ABBREVIATIONS / REFERENCES

Click for explanation and illustration

<u>dec = decreas(e)(s)(ing)</u>	<u>inc = increas(e)(s)(ing)</u>
<u>k = knit</u>	<u>k2tog = knit 2 together</u>
<u>p = purl</u>	<u>p2tog = purl 2 together</u>
<u>rem = remain(s)(ing)</u>	<u>rep = repeat(s)(ing)</u>
<u>RS = right side</u>	<u>St st = Stockinette stitch</u>
<u>st(s) = stitch(es)</u>	<u>WS = wrong side</u>

[Learn to knit instructions: http://www.lionbrand.com/learn/how-to-knit](http://www.lionbrand.com/learn/how-to-knit)

Every effort has been made to have the knitting and crochet instructions accurate and complete. We cannot be responsible for variance of individual knitters and crocheters, human errors, or typographical mistakes.

We want your project to be a success! If you need help with this or any other Lion Brand pattern, e-mail support is available 7 days per week. Just click [here](#) to explain your problem and someone will help you!

For thousands of free patterns, visit our website www.LionBrand.com

To order visit our website www.lionbrand.com or call: (800) 258-YARN (9276) any time!

**When in New York City, visit the Lion Brand Yarn Studio where we have the largest selection of our yarns anywhere and over 100 classes and events monthly.
34 West 15th Street, NY, NY 10011**

Copyright ©1998-2016 Lion Brand Yarn Company, all rights reserved. No pattern or other material may be reproduced -- mechanically, electronically, or by any other means, including photocopying -- without written permission of Lion Brand Yarn Company.