



**Free Knitting Pattern**  
**Lion Brand® Wool-Ease® Thick & Quick®**  
**Neck's Best Thing Graphic Scarf**  
Pattern Number: L40641



# Free Knitting Pattern from Lion Brand Yarn

## Lion Brand® Wool-Ease® Thick & Quick®

### Neck's Best Thing Graphic Scarf

Pattern Number: L40641

**SKILL LEVEL:** Easy + (Level 3)

**SIZE:** One Size

About 7 x 52 in. (18 x 132 cm)

Take your scarves to the next level by doing  
**The Neck's Best Thing**



**[Click here to learn more about the Neck's Best Thing!](#)**

**CORRECTIONS:** None as of Feb 13, 2015. To check for later updates, click [here](#).

#### **MATERIALS**

- 640-099 Lion Brand Wool-Ease Thick & Quick Yarn: Fisherman  
1 Ball (A)
  - 640-149 Lion Brand Wool-Ease Thick & Quick Yarn: Charcoal  
1 Ball (B)
  - Lion Brand Knitting Needles- Size 13 [9 mm]
  - Lion Brand Large-Eye Blunt Needles (Set of 6)
- \*Wool-Ease Thick & Quick (Article #640). Solids, Heathers, Twists, Prints, Stripes: 80% Acrylic, 20% Wool  
Wheat & Wood: 86% Acrylic; 10% Wool; 4% Rayon  
Oatmeal & Barley & Grey Marble: 82% Acrylic; 10% Wool; 8% Rayon  
Metallics: 79% Acrylic, 20% Wool, 1% Metallic Poly; package size: Solids, Heathers, Twists, Tweeds: 6 oz./170g (106 yd/97 m)  
Prints, Stripes: 5 oz./140g (87 yd/80 m)  
Metallics: 5 oz./140g (92 yd/84 m)*



#### **GAUGE:**

9 sts + 16 rows = about 4 in. (10 cm) over Garter st (k every row).

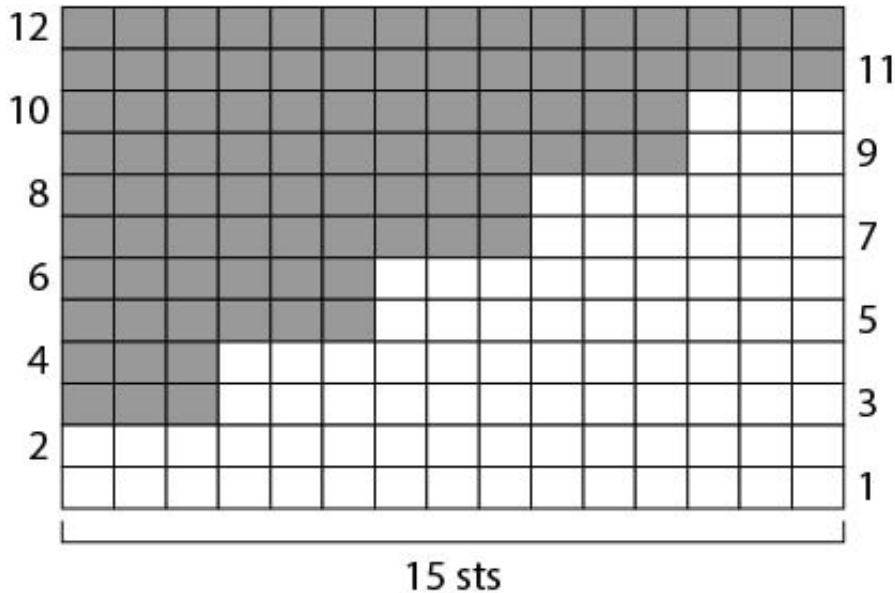
When you match the gauge in a pattern, your project will be the size specified in the pattern and the materials specified in the pattern will be sufficient. The needle or hook size called for in the pattern is based on what the designer used, but it is not unusual for gauge to vary from person to person. If it takes you fewer stitches and rows to make your swatch, try using a smaller size hook or needles; if more stitches and rows, try a larger size hook or needles.

[Making a Gauge Swatch](#)

#### **NOTES:**

1. Scarf is worked in one piece in simple Garter st (k every row). You will be working with 2 colors of yarn on Rows 3-10. When changing color, twist yarns on WS to prevent a hole from forming in your work.
2. Yarn color is changed by following the written instructions below or by following a chart. When

working from chart, read RS rows from right to left and WS rows from left to right.  
 3. All slip sts should be slipped as if to purl.



□ #099 Fisherman (A)  
 ■ #149 Charcoal (B)

**SCARF**

With A, cast on 15 sts.

**Rows 1 and 2:** With A, sl 1, k to end of row.

**Row 3 (RS):** With A, sl 1, k11; with B, k to end of row.

**Row 4:** With B, sl 1, k2; with A, k to end of row.

**Row 5:** With A, sl 1, k8; with B, k to end of row.

**Row 6:** With B, sl 1, k5; with A, k to end of row.

**Row 7:** With A, sl 1, k5; with B, k to end of row.

**Row 8:** With B, sl 1, k8; with A, k to end of row.

**Row 9:** With A, sl 1, k2; with B, k to end of row.

**Row 10:** With B, sl 1, k11; with A, k to end of row.

**Rows 11 and 12:** With B, rep Rows 1 and 2.

**Rows 13-204:** Rep Rows 1-12 sixteen times.

**Rows 205 and 206:** With A, rep Rows 1 and 2.

With A, bind off.

**FINISHING**

Weave in ends.





## ABBREVIATIONS / REFERENCES

Click for explanation and illustration

<u>k = knit</u>	<u>rep = repeat(s)(ing)</u>
<u>RS = right side</u>	<u>sl = slip</u>
<u>st(s) = stitch(es)</u>	<u>WS = wrong side</u>

Learn to knit instructions:<http://learnToKnit.LionBrand.com>

---

Every effort has been made to have the knitting and crochet instructions accurate and complete. We cannot be responsible for variance of individual knitters and crocheters, human errors, or typographical mistakes.

We want your project to be a success! If you need help with this or any other Lion Brand pattern, e-mail support is available 7 days per week. Just click [here](#) to explain your problem and someone will help you!

**For thousands of free patterns, visit our website [www.LionBrand.com](http://www.LionBrand.com)  
To order visit our website [www.lionbrand.com](http://www.lionbrand.com) or call: (800) 258-YARN (9276) any time!**

**When in New York City, visit the Lion Brand Yarn Studio where we have the largest selection of our yarns anywhere and over 100 classes and events monthly.  
34 West 15th Street, NY, NY 10011**

Copyright ©1998-2015 Lion Brand Yarn Company, all rights reserved. No pattern or other material may be reproduced -- mechanically, electronically, or by any other means, including photocopying -- without written permission of Lion Brand Yarn Company.