



**Free Knitting Pattern**  
**Lion Brand® Vanna's Choice®**  
**Chatsworth Cable Poncho**  
Pattern Number: L40600



Practice your ribbing and cables with this fashionably chic poncho made with Vanna's Choice®. *Designed by Vladimir Teriokhin.*

# Free Knitting Pattern from Lion Brand Yarn

## Lion Brand® Vanna's Choice®

### Chatsworth Cable Poncho

Pattern Number: L40600

**SKILL LEVEL:** Intermediate (Level 3)

**SIZE:** One Size

**Finished Width** About 51 in. (129.5 cm)

**Finished Length** About 30 in. (76 cm)

**CORRECTIONS:** (applied Feb 23, 2015)

#### RIGHT SIDE

With smaller straight needles and **B A**, cast on 102 sts.

#### MATERIALS

- 860-400 Lion Brand Vanna's Choice Yarn:  
Oatmeal  
9 Balls (A)
- 860-401 Lion Brand Vanna's Choice Yarn:  
Grey Marble  
7 Balls (B)
- Lion Brand Knitting Needles- Size 8 [5 mm]
- Lion Brand Knitting Needles - Size 10 [6 mm]
- Boye Aluminum Circular Knitting Needles  
16 inches Size 8
- Lion Brand Cable Needles (Set of 2)
- Lion Brand Split Ring Stitch Markers
- Lion Brand Large-Eye Blunt Needles (Set of 6)
- Additional Materials  
Circular knitting needle size 8 (5 mm), 40 in. (101.5 cm) long

*\*Vanna's Choice® (Article #860). 100% Premium Acrylic*

**400, 401, 403:** 92% Acrylic, 8% Rayon

**402:** 96% Acrylic, 4% Rayon; package size: **Solids:** 3.5 oz (100 g), 170 yards (156 m)

**Prints, Tweeds, & Heathers:** 3 ozs (85 g) , 145 yards (133 meters)

**Twists:** 2.5 oz (70 g), 121 yards (111 meters)



#### GAUGE:

14 sts + 19 rows = 4 in. (10 cm) in K2, p2 rib, slightly stretched, using larger needles.

When you match the gauge in a pattern, your project will be the size specified in the pattern and the materials specified in the pattern will be sufficient. The needle or hook size called for in the pattern is based on what the designer used, but it is not unusual for gauge to vary from person to person. If it takes you fewer stitches and rows to make your swatch, try using a smaller size hook or needles; if more stitches and rows, try a larger size hook or needles.

Making a Gauge Swatch

#### STITCH EXPLANATION:

**4/4 LC (4 over 4 left cross)** Slip 4 sts to cable needle and hold in front of work, k4, then k4 from cable needle.

**4/4 RC (4 over 4 right cross)** Slip 4 sts to cable needle and hold in back of work, k4, then k4 from cable needle.

**kfb (knit in front and back)** Knit next st without removing it from left needle, then k through back of same st – 1 st increased.

#### PATTERN STITCH

**K2, p2 Rib (worked over a multiple of 4 sts + 2 additional sts)**

**Row 1:** K2, \*p2, k2; rep from \* to end of row.

**Row 2:** K the knit sts and p the purl sts.

Rep Row 2 for K2, p2 Rib.

**Braided Cable (multiple of 15 sts)**

**Row 1 (RS):** \*P3, k12; rep from \*.

**Row 2 and All WS Rows:** \*P12, k3; rep from \*.

**Row 3:** \*P3, k4, 4/4 LC; rep from \*.

**Row 5:** \*P3, k12; rep from \*.

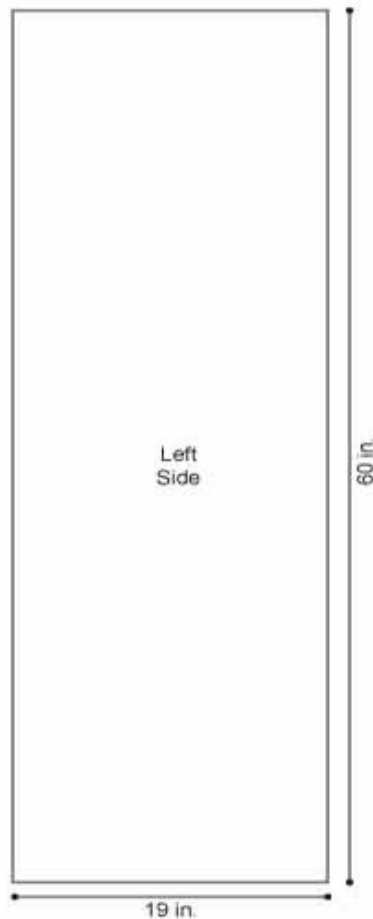
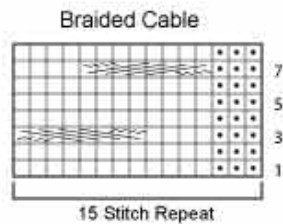
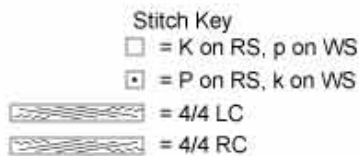
**Row 7:** \*P3, 4/4 RC, k4; rep from \*.

**Row 8:** \*P12, k3; rep from \*.

Rep Rows 1-8 for Braided Cable.

## NOTES:

1. Poncho is worked in 2 pieces, Left Side and Right Side. Pieces are worked from lower edge of front, over shoulders, to lower edge of back. Left Side is worked in K2, p2 rib, Right Front is worked in a cable pattern.
2. The cable pattern on the Right Front can be worked from the written instructions or by following a chart. When working from chart, read RS rows from right to left and WS rows from left to right.
3. Turtleneck is worked from sts picked up around the neck of completed Poncho. Turtleneck is folded to inside to create a double thick neck.
4. Borders are worked from sts picked up along edges of completed Poncho.
5. End with a WS row means that the last row you work should be a WS row, and the next row that you are ready to work will be a RS row.
6. When you see "- 12 sts" in the instructions, this lets you know how many sts you will have at the end of that specific row.



## LEFT SIDE

With smaller straight needles and B, cast on 68 sts.

**Row 1 (RS):** P1, work Row 1 of K2, p2 rib to last st, p1.

**Row 2:** K1, work in K2, p2 rib to last st, k1.

Continue as established, working first and last st in rev St st (p on RS, k on WS) and remaining sts in K2, p2 rib until piece measures about 3 1/2 in. (9 cm) from beg, end with a WS row as the last row you work.

Change to larger needles and continue as established until piece measures 56 1/2 in. (143.5 cm) from beg, end with a WS row as the last row you work.

Change to smaller straight needles and work in K2, p2 rib for 3 1/2 in. (9 cm). Bind off.

## RIGHT SIDE

With smaller straight needles and A, cast on 102 sts.

**Row 1 (RS):** P3, \*k2, p2; rep from \* to last 3 sts, k2, p1.

**Row 2:** K1, \*p2, k2; rep from \* to last st, k1.

Rep Rows 1 and 2 until piece measures about 3 1/2 in. (9 cm) from beg, end with

a RS row as the last row you work.

**Next Row (Increase Row WS):** K1, p2, k2, \*p2, kfb, k1; rep from \* to last 5 sts, p2, k3 – you will have 125 sts at the end of this row.

Change to larger straight needles.

**Note:** In the next section, you will be working the Braided Cable pattern.

You can work the cable from the written instructions or from the chart, your choice!

**Row 1 (RS):** Work Row 1 of Braided Cable across to last 5 sts, p2, k2, p1.

**Row 2:** K1, p2, k2, work next row of Braided Cable to end of row.

Work in patterns as established until piece measures about 26 in. (66 cm) from beg, end with a WS row as the last row you work.

#### Shape Front Neck

**Next Row (RS):** Keeping in patterns, work 11 sts for left shoulder, join a 2nd ball of yarn and bind off 9 sts for neck, work to end of row for right shoulder – at the end of this row you will have 11 sts for left shoulder and 105 sts for right shoulder. Working both sides AT THE SAME TIME with separate balls of yarn, bind off 3 sts from each neck edge once, 2 sts from each neck edge once, then 1 st from each neck edge 4 times.

When all bind offs are finished, you'll have 2 sts for left shoulder and 96 sts for right shoulder.

Continue in patterns as established and work both shoulders AT THE SAME TIME with separate balls of yarn until piece measures about 31 in. (76 cm) from beg, end with a WS row as the last row you work.

#### Shape Back Neck

Continuing to work both shoulders with separate balls of yarn in patterns as established, cast on 2 sts at each neck edge twice – 6 sts for left shoulder and 100 sts for right shoulder.

Cut the 2nd ball of yarn and from this point on, work with one ball of yarn only.

**Next Row (RS):** Work 6 sts, cast on 19 sts, work to end of row – 125 sts.

**Next Row (WS):** K1, p2, k2, work in Braided Cable to end of row.

Continue as established until piece measures about 56 1/2 in. (143.5 cm), end with a RS row as the last row you work.

**Next Row (Decrease Row WS):** K1, p2, k2, \*p2tog, p1, k2; rep from \* to last 5 sts, p2, k3 – you will have 102 sts at the end of this row.

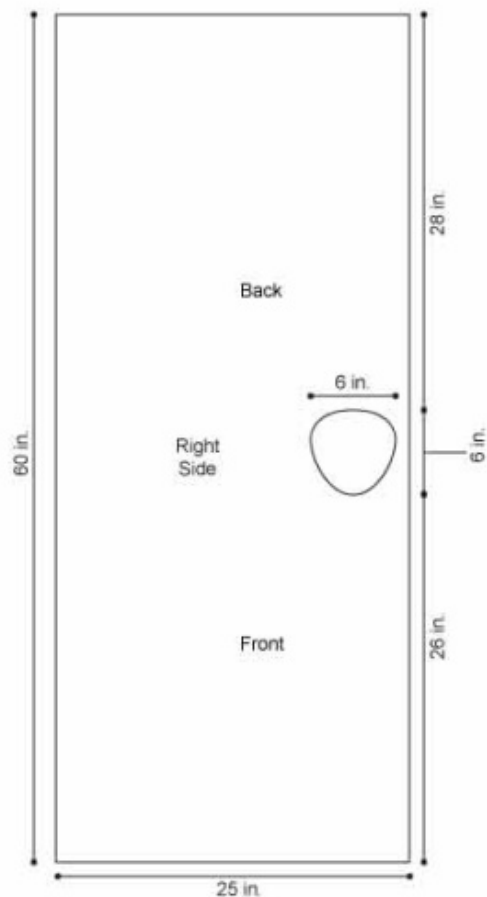
Change to smaller straight needles.

**Row 1:** P3, \*k2, p2; rep from \* to last 3 sts, k2, p1.

**Row 2:** K1, \*p2, k2; rep from \* to last st, k1.

Rep Rows 1 and 2 for 3 1/2 in. (9 cm).

Bind off.



## FINISHING

Sew long edges of Left and Right Sides tog.

### Turtleneck

From RS with shorter circular needle and A, beg at one shoulder edge of neck, pick up and k 64 sts spaced as evenly as possible around neck edge.

Place marker for beg of rnd and join by knitting the first st on the left hand needle with the working yarn from the right hand needle and being careful not to twist.

**Rnd 1 (RS):** \*K2, p2; rep from \* around.

Rep Rnd 1 until turtleneck measures about 9 in. (23 cm).

Bind off.

Fold bind-off edge to WS side and sew to pick-up row.

### Left Side Border

**Note:** Borders are worked on longer circular needle to accommodate the number of sts. Work back and forth on circular needle as if working on straight needles.

From RS with longer circular needle, join B at outer long edge of Left Side, pick up and k 218 sts spaced as evenly as possible along long edge.

Work in K2, p2 rib for 3 1/2 in. (9 cm).

Bind off.

With A, rep border along outer long edge of Right Side.

Weave in ends.

## ABBREVIATIONS / REFERENCES

Click for explanation and illustration

beg = begin(s)(ning)

dec = decreas(e)(s)(ing)

inc = increas(e)(s)(ing)

k = knit

<u>p = purl</u>	<u>p2tog = purl 2 together</u>
<u>rem = remain(s)(ing)</u>	<u>rep = repeat(s)(ing)</u>
<u>rnd(s) = round(s)</u>	<u>RS = right side</u>
<u>st(s) = stitch(es)</u>	<u>WS = wrong side</u>

Learn to knit instructions:<http://www.lionbrand.com/learn/how-to-knit>

---

Every effort has been made to have the knitting and crochet instructions accurate and complete. We cannot be responsible for variance of individual knitters and crocheters, human errors, or typographical mistakes.

We want your project to be a success! If you need help with this or any other Lion Brand pattern, e-mail support is available 7 days per week. Just click [here](#) to explain your problem and someone will help you!

**For thousands of free patterns, visit our website [www.LionBrand.com](http://www.LionBrand.com)  
To order visit our website [www.lionbrand.com](http://www.lionbrand.com) or call: (800) 258-YARN (9276) any time!**

**When in New York City, visit the Lion Brand Yarn Studio where we have the largest selection of our yarns anywhere and over 100 classes and events monthly.  
34 West 15th Street, NY, NY 10011**

Copyright ©1998-2016 Lion Brand Yarn Company, all rights reserved. No pattern or other material may be reproduced -- mechanically, electronically, or by any other means, including photocopying -- without written permission of Lion Brand Yarn Company.