



Free Crochet Pattern
Lion Brand® Textures
Diagonal Squares Afghan
Pattern Number: L40707



Designed by Teresa Chorzepa.

Free Crochet Pattern from Lion Brand Yarn

Lion Brand® Textures Diagonal Squares Afghan

Pattern Number: L40707

SKILL LEVEL: Easy (Level 2)

SIZE: One Size

About 40 x 60 in. (101.5 x 152.5 cm)

CORRECTIONS: None as of Mar 15, 2015. To check for later updates, click [here](#).

MATERIALS

- 931-205 Lion Brand Textures Yarn: Mountain Dawn
2 Balls (A)
- 931-201 Lion Brand Textures Yarn: Meadow Flowers
2 Balls (B)
- 931-203 Lion Brand Textures Yarn: Arctic Sky
2 Balls (C) **Textures (Article #931). 90% Acrylic, 10% Nylon; package size: 3.00oz/85.05 gr. (149yds/136m) pull skeins*
- 931-200 Lion Brand Textures Yarn: Sun Rays
2 Balls (D)
- 931-202 Lion Brand Textures Yarn: Enchanted Forest
2 Balls (E)
- Lion Brand Crochet Hook - Size I-9
- Lion Brand Split Ring Stitch Markers
- Lion Brand Large-Eye Blunt Needles (Set of 6)



GAUGE:

1 Large Square = about 7 x 7 in. (18 x 18 cm).

When you match the gauge in a pattern, your project will be the size specified in the pattern and the materials specified in the pattern will be sufficient. The needle or hook size called for in the pattern is based on what the designer used, but it is not unusual for gauge to vary from person to person. If it takes you fewer stitches and rows to make your swatch, try using a smaller size hook or needles; if more stitches and rows, try a larger size hook or needles.

Making a Gauge Swatch

NOTES:

1. Afghan is made from 39 Large Squares and 16 Small Squares. First Large Square is made

separately. The first row of all following Squares are worked along one edge of a previous Square following Assembly Diagram.

2. All Large Squares, except last Large Square, are worked and joined to previous Large Squares. Then Small Squares are worked and joined around the outer edges of the Large Squares. Finally, the last Large Square is worked and joined to the last Small Square in the upper left corner.

3. All edges of Squares that were not joined as the pieces were crocheted are sewn together.

4. A border is worked around completed Afghan.



AFGHAN

First Large Square

With A, ch 22.

Row 1 (RS): Sc in 2nd ch from hook and in each ch across – you will have 21 sc at the end of this row.

Row 2: Ch 2 (counts as first hdc), turn, sk first st, hdc in each st across.

Row 3: Ch 2 (counts as first hdc), turn, sk first st, hdc in each st across working last hdc in top of turning ch.

Row 4: Ch 3 (counts as first hdc, ch 1), turn, sk first 2 sts, hdc in next st, *ch 1, sk next st, hdc in next

st; rep from * across working last hdc in top of turning ch – 11 hdc and 10 ch-1 sps.

Row 5: Ch 2 (counts as first hdc), turn, sk first st, hdc in each hdc and ch-1 sp across to turning ch, hdc in turning ch-sp, hdc in 2nd ch of turning ch – 21 hdc.

Rows 6-11: Rep Row 3 six times.

Rows 12 and 13: Rep Rows 4 and 5.

Rows 14 and 15: Rep Row 3 twice.

Fasten off.

Second Large Square

Row 1 (RS): From RS, following Assembly Diagram, join D with sl st at beg of side edge of First Large Square, ch 1, work 21 sc as evenly spaced as possible across side edge.

Rows 2-15: With D, work same as Rows 2-15 of First Large Square.

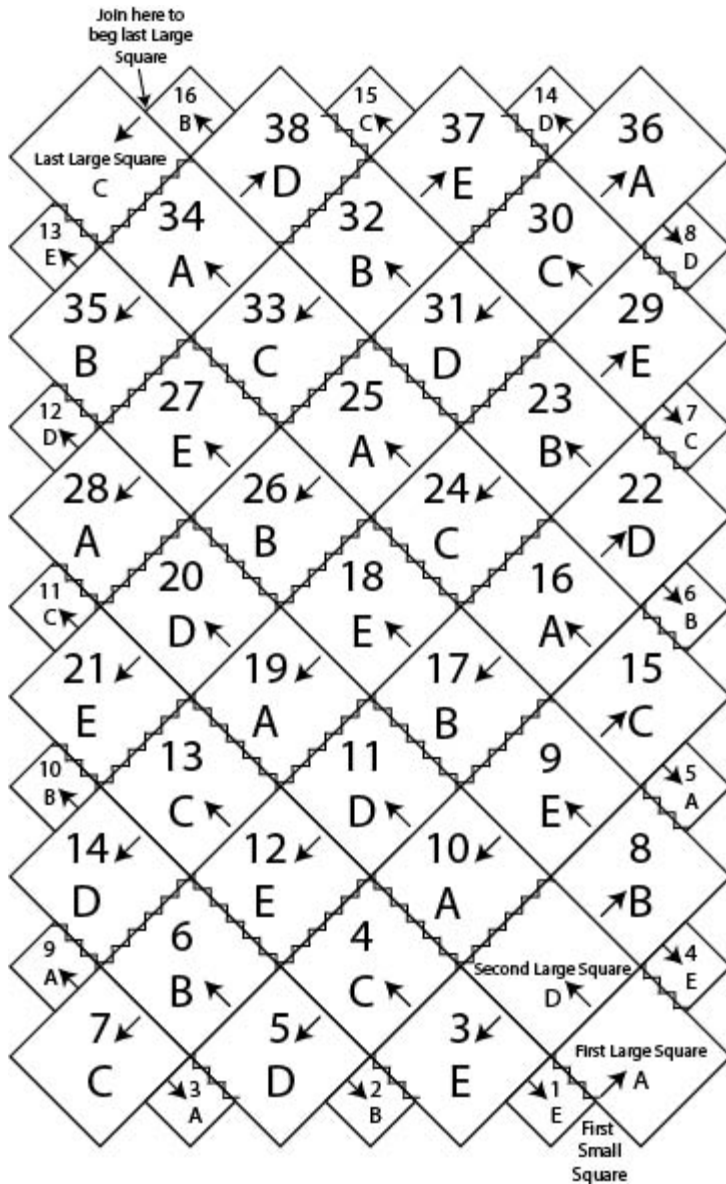
Fasten off.

Next 36 Large Squares

Row 1 (RS): From RS, following Assembly Diagram, join indicated color with sl st at beg of side edge of previous Large Square, work 21 sc as evenly spaced as possible across side edge.

Rows 2-15: With indicated color, work same as Rows 2-15 of First Large Square.

Fasten off.



A = #205 Mountain Dawn
 B = #201 Meadow Flowers
 C = #203 Arctic Sky
 D = #200 Sun Rays
 E = #202 Enchanted Forest
 = direction of work
 = sew edges together

First Small Square

Following Assembly Diagram, place a marker at center of side edge of Third Large Square.

Row 1 (RS): From RS, following Assembly Diagram, join E with sl st at marker, ch 1, work 11 sc as evenly spaced as possible between marker and corner where First and Third Large Squares meet.

Row 2: Ch 2 (counts as first hdc), turn, sk first st, hdc in each st across.

Row 3: Ch 2 (counts as first hdc), turn, sk first st, hdc in each st across working last hdc in top of turning ch.

Row 4: Ch 3 (counts as first hdc, ch 1), turn, sk first 2 sts, hdc in next st, *ch 1, sk next st, hdc in next st; rep from * across working last hdc in top of turning ch – 6 hdc and 5 ch-1 sps.

Row 5: Ch 2 (counts as first hdc), turn, sk first st, hdc in each hdc and ch-1 sp across to turning ch, hdc in turning ch-sp, hdc in 2nd ch of turning ch – 11 hdc.

Rows 6 and 7: Rep Row 3 twice.

Fasten off.

Next 15 Small Squares

Work next 15 Small Squares same as First Small Square, using color and beg across half of edge of Large Square indicated in Assembly Diagram.

Last Large Square

Following Assembly Diagram, join C with sl st in corner of last Small Square, ch 11.

Row 1 (RS): Sc in 2nd ch from hook and in each ch across, work 11 sc as evenly spaced as possible across side edge of last Small Square – 21 sc.

Rows 2-15: With C, work same as Rows 2-15 of First Large Square.

Fasten off.

FINISHING

Sew rem edges between Squares together.

Border

From RS, join B with sl st in any corner of outer edge, ch 1, 3 sc in same corner, work 9 sc as evenly spaced as possible across edges of each Square and 3 sc in each corner across two edges of Afghan; change to E, work 9 sc as evenly spaced as possible across edges of each Square and 3 sc in each corner across rem two edges of Afghan; join with sl st in first sc. Fasten off.

Weave in ends.

ABBREVIATIONS / REFERENCES	
Click for explanation and illustration	
<u>beg = begin(s)(ning)</u>	<u>ch(s) = chain(s)</u>
<u>ch-space = space previously made</u>	<u>hdc = half double crochet</u>
<u>rem = remain(s)(ing)</u>	<u>rep = repeat(s)(ing)</u>
<u>RS = right side</u>	<u>sc = single crochet</u>
<u>sk = skip</u>	<u>sl st = slip stitch</u>
<u>sp(s) = space(s)</u>	<u>st(s) = stitch(es)</u>

Learn to crochet instructions: <http://learnToCrochet.LionBrand.com>

Every effort has been made to have the knitting and crochet instructions accurate and complete. We cannot be responsible for variance of individual knitters and crocheters, human errors, or typographical mistakes.

We want your project to be a success! If you need help with this or any other Lion Brand pattern, e-mail support is available 7 days per week. Just click [here](#) to explain your problem and someone will help you!

For thousands of free patterns, visit our website www.LionBrand.com

To order visit our website www.lionbrand.com or call: (800) 258-YARN (9276) any time!

When in New York City, visit the Lion Brand Yarn Studio where we have the largest selection of our yarns anywhere and over 100 classes and events monthly.

34 West 15th Street, NY, NY 10011

Copyright ©1998-2015 Lion Brand Yarn Company, all rights reserved. No pattern or other material may be reproduced -- mechanically, electronically, or by any other means, including photocopying -- without written permission of Lion Brand Yarn Company.