



Free Knitting Pattern
Lion Brand® Ice Cream®
Checkerboard Blanket
Pattern Number: L40355B



Free Knitting Pattern from Lion Brand Yarn

Lion Brand® Ice Cream®

Checkerboard Blanket

Pattern Number: L40355B

SKILL LEVEL: Beginner (Level 1)

SIZE: One Size

About 25 x 28 in. (64 x 71 cm)

CORRECTIONS: None as of Jun 27, 2016. To check for later updates, click [here](#).

MATERIALS

- 923-205 Lion Brand Ice Cream: Spumoni
2 Balls
- Lion Brand Large-Eye Blunt Needles (Set of 6)
- Additional Materials
Circular knitting needle size 5 (3.75 mm), 36 in. (91.5 cm) long

**Ice Cream (Article #923). 100% Acrylic; package size: 3.50oz/100.00 gr. (394yds/360m) pull skeins*



GAUGE:

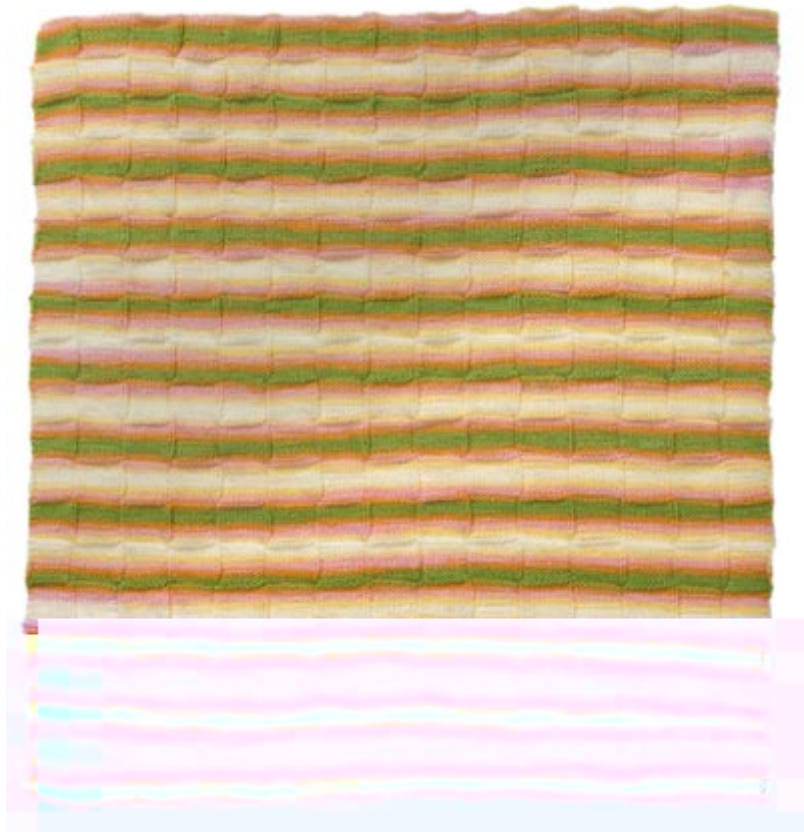
24 sts = about 4 in. (10 cm) over Rows 1-24.

When you match the gauge in a pattern, your project will be the size specified in the pattern and the materials specified in the pattern will be sufficient. The needle or hook size called for in the pattern is based on what the designer used, but it is not unusual for gauge to vary from person to person. If it takes you fewer stitches and rows to make your swatch, try using a smaller size hook or needles; if more stitches and rows, try a larger size hook or needles.

[Making a Gauge Swatch](#)

NOTES:

1. Blanket is worked in one piece.
2. Circular needle is used to accommodate the large number of sts. Work back and forth on circular needle as if working on straight needles.



BLANKET

Cast on 150 sts.

Row 1: *K10, p10; rep from * to last 10 sts, k10.

Row 2: *P10, k10; rep from * to last 10 sts, p10.

Rows 3-12: Rep Rows 1 and 2.

Row 13: *P10, k10; rep from * to last 10 sts, p10.

Row 14: *K10, p10; rep from * to last 10 sts, k10.

Rows 15-24: Rep Rows 13 and 14.

Rows 25-228: Rep Rows 1-24 eight more times, then rep Rows 1-12 once.

Bind off.

FINISHING

Weave in ends.

ABBREVIATIONS / REFERENCES	
Click for explanation and illustration	
k = knit	p = purl
rep = repeat(s)(ing)	st(s) = stitch(es)

Learn to knit instructions: <http://www.lionbrand.com/learn/how-to-knit>

Every effort has been made to have the knitting and crochet instructions accurate and complete. We cannot be responsible for variance of individual knitters and crocheters, human errors, or typographical mistakes.

We want your project to be a success! If you need help with this or any other Lion Brand pattern, e-mail support is available 7 days per week. Just click [here](#) to explain your problem and someone will help you!

For thousands of free patterns, visit our website www.LionBrand.com

To order visit our website www.lionbrand.com or call: (800) 258-YARN (9276) any time!

When in New York City, visit the Lion Brand Yarn Studio where we have the largest selection of our yarns anywhere and over 100 classes and events monthly.

34 West 15th Street, NY, NY 10011

Copyright ©1998-2016 Lion Brand Yarn Company, all rights reserved. No pattern or other material may be reproduced -- mechanically, electronically, or by any other means, including photocopying -- without written permission of Lion Brand Yarn Company.