



Free Crochet Pattern
Lion Brand® Vanna's Glamour®
Mr. And Mrs. Chair Covers
Pattern Number: L50074



Designed by Marianne Forestal.

Free Crochet Pattern from Lion Brand Yarn

Lion Brand® Vanna's Glamour®

Mr. And Mrs. Chair Covers

Pattern Number: L50074

SKILL LEVEL: Easy + (Level 3)

SIZE: One Size

Finished Width About 12 in. (30.5 cm), including edging

Finished Length About 20 in. (51 cm), including edging

CORRECTIONS: None as of Apr 11, 2015. To check for later updates, click [here](#).

MATERIALS

- 861-100 Lion Brand Vanna's Glamour Yarn:
Diamond

3 Balls (A)

- 861-149 Lion Brand Vanna's Glamour Yarn:
Moonstone

1 Ball (B)

- Lion Brand Crochet Hook - Size G-6 (4 mm)

- Lion Brand Split Ring Stitch Markers

- Lion Brand Large-Eye Blunt Needles (Set of 6)

**Vanna's Glamour (Article #861). 96% Acrylic, 4% Metallic Polyester; package size: 1.75oz/49.61 gr. (202yds/185m) pull skeins*



GAUGE:

19 sc = about 4 in. (10 cm).

When you match the gauge in a pattern, your project will be the size specified in the pattern and the materials specified in the pattern will be sufficient. The needle or hook size called for in the pattern is based on what the designer used, but it is not unusual for gauge to vary from person to person. If it takes you fewer stitches and rows to make your swatch, try using a smaller size hook or needles; if more stitches and rows, try a larger size hook or needles.

Making a Gauge Swatch

STITCH EXPLANATION:

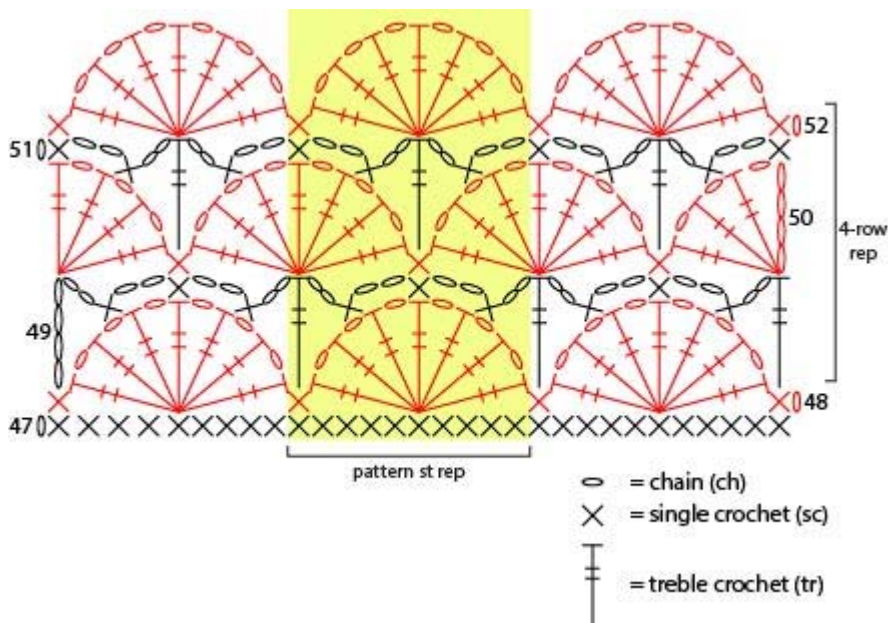
fan Tr in next st, (ch 1, tr in same st) 6 times.

picot Ch 3, sl st in 3rd ch from hook.

NOTES:

1. Covers are worked in one piece.
2. Simple cross stitch embroidery is worked onto the completed Covers.

3. A stitch diagram is provided to clarify the lace pattern of Rows 48-64.



COVERS (make 2)

With A, ch 52.

Row 1 (WS): Dc in 4th ch from hook (the 3 skipped ch count as first dc) and in each ch across – 50 dc.

Rows 2-7: Ch 3 (counts as first dc), turn, dc in next st and in each st across, working last dc in top of turning ch.

Row 8: Ch 1, turn, working in back loops only, sc in each st across, working last sc in top of turning ch.

Rows 9-47: Ch 1, turn, working in both loops, sc in each st across.

Lace Pattern

Row 48: Ch 1, turn, sc in first st, sk next 4 sts, fan in next st, (sk next 4 sts, sc in next st, sk next 4 sts, fan in next st) 4 times, sk next 3 sts, sc in last st – you will have 6 sc and 5 fans at the end of this row.

Row 49: Ch 6 (counts as first tr and ch-2 sp), turn, sc in 2nd ch-1 sp of first fan, ch 2, sc in middle (4th) tr of same fan, ch 2, sk next ch-1 sp, sc in next ch-1 sp, ch 2, tr in next sc, *ch 2, sc in 2nd ch-1 sp of next fan, ch 2, sc in middle tr of same fan, ch 2, sk next ch-1 sp, sc in next ch-1 sp, ch 2, tr in next sc; rep from * across – 15 sc, 6 tr, and 20 ch-2 sps.

Row 50: Ch 5 (counts as first tr and ch-1 sp), turn, (tr, ch 1, tr, ch 1, tr) in first st (beg half fan made), *sk next sc, sc in next sc, fan in next tr; rep from * 3 more times, sk next sc, sc in next sc, (tr, ch 1, tr, ch 1, tr, ch 1, tr) in 4th ch of turning ch (end half fan made) – 5 sc, 4 fans and 2 half fans.

Row 51: Ch 1, turn, sc in first tr, ch 2, sc in 2nd ch-1 sp of first half fan, *ch 2, tr in next sc, ch 2, sc in 2nd ch-1 sp of next fan, ch 2, sc in middle tr of same fan, ch 2, sk next ch-1 sp, sc in next ch-1 sp; rep from * 3 more times, ch 2, tr in next sc, ch 2, sc in 2nd ch-1 sp of last half fan, ch 2, sc in 4th ch of turning ch – 16 sc, 5 tr, and 20 ch-2 sps.

Row 52: Ch 1, turn, sc in first sc, *fan in next tr, sk next sc, sc in next sc; rep from * 4 more times – 6 sc and 5 fans.

Rows 53-64: Rep Rows 49-52 three more times.

Do not fasten off.

Edging

Note: Rnd 1 of edging is worked around entire outside edge of Chair Cover. Row 2 is worked over just 3 sides.

Rnd 1 (RS): Ch 1, do not turn, working across side edge, work 73 sc evenly spaced to Row 7; working in unused front loops of Row 7, 3 sc in first st, sc in next 48 sts, 3 sc in last st; working across other side edge, work 73 sc evenly spaced to Row 64; working in sts of Row 64, place marker, 3 sc in first sc, *(sc in next tr, sc in next ch-1 sp) 3 times, sc in next tr, picot, (sc in next ch-1 sp, sc in next tr) 3 times, sc in

next sc; rep from * 3 more times, (sc in next tr, sc in next ch-1 sp) 3 times, sc in next tr, picot, (sc in next ch-1 sp, sc in next tr) 3 times, 3 sc in last sc; join with sl st in first sc – 275 sc.

Row 2: Ch 3, dc in same st as join, *sk next 2 sc, (sl st, ch 3, dc) in next sc; rep from * to 4 sts before marker, sk next 2 sc, sl st in next sc.

Leave rem sts unworked.

Fasten off.

FINISHING

Ties (make 4)

With A, make a ch about 12 in. (30.5 cm) long.

Sl st in 2nd ch from hook and in each ch across.

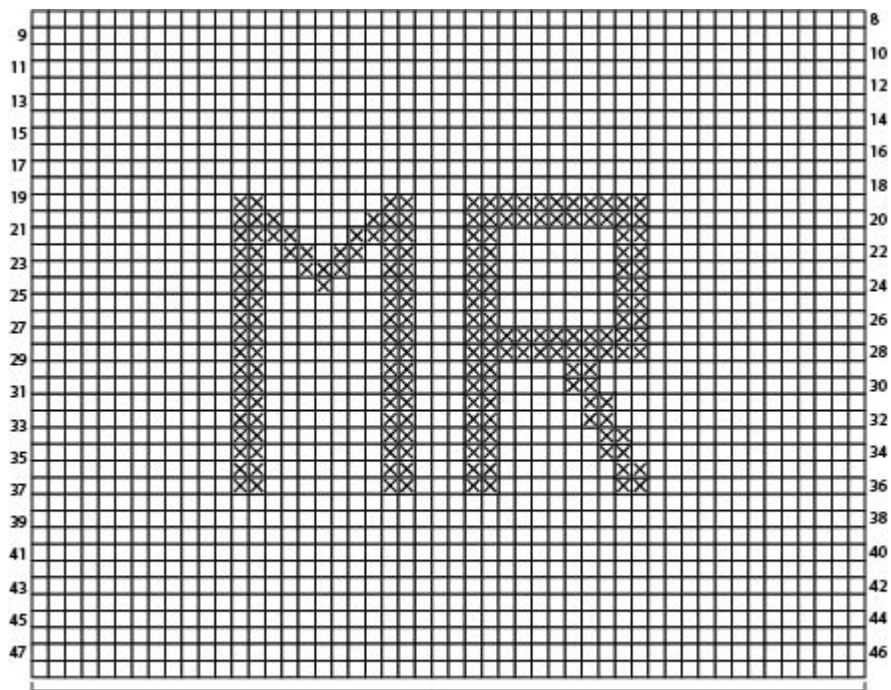
Fasten off.

Sew center of a tie to each end of Row 7 on each Cover.

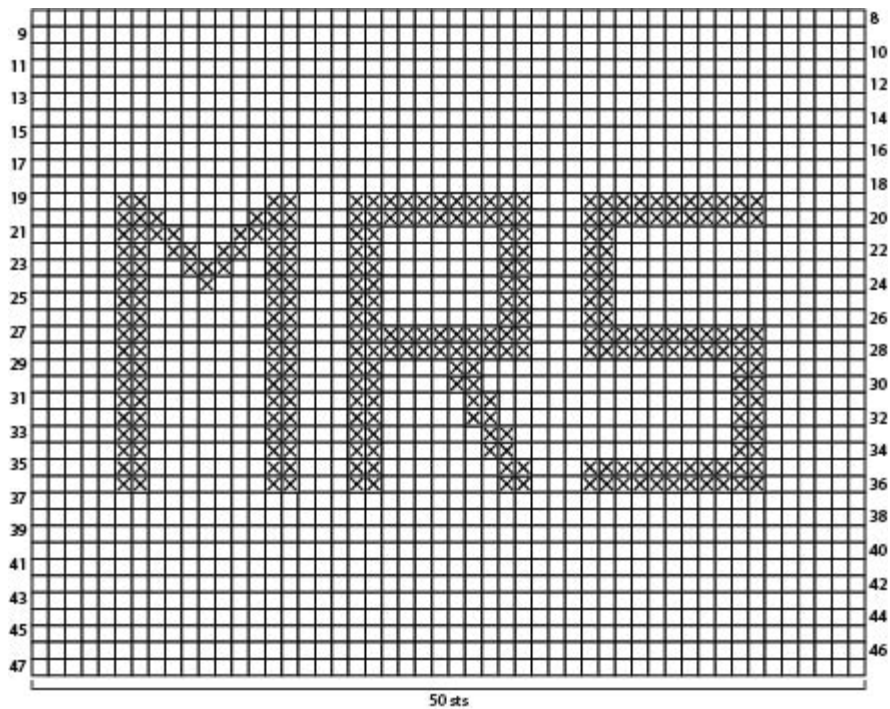
Embroidery

With B, and following charts, cross stitch "MR" over sc rows of one Cover and "MRS" over sc rows of other Cover.

Weave in ends.



⊗ = With B, embroider cross stitch



☒ = With B, embroider cross stitch

ABBREVIATIONS / REFERENCES

Click for explanation and illustration

<u>beg = begin(s)(ning)</u>	<u>ch(s) = chain(s)</u>
<u>ch-space = space previously made</u>	<u>dc = double crochet</u>
<u>rem = remain(s)(ing)</u>	<u>rep = repeat(s)(ing)</u>
<u>RS = right side</u>	<u>sc = single crochet</u>
<u>sk = skip</u>	<u>sl st = slip stitch</u>
<u>sp(s) = space(s)</u>	<u>st(s) = stitch(es)</u>
<u>tr = treble (triple) crochet</u>	<u>WS = wrong side</u>

Learn to crochet instructions: <http://learnToCrochet.LionBrand.com>

Every effort has been made to have the knitting and crochet instructions accurate and complete. We cannot be responsible for variance of individual knitters and crocheters, human errors, or typographical mistakes.

We want your project to be a success! If you need help with this or any other Lion Brand pattern, e-mail support is available 7 days per week. Just click [here](#) to explain your problem and someone will help you!

For thousands of free patterns, visit our website www.LionBrand.com

To order visit our website www.lionbrand.com or call: (800) 258-YARN (9276) any time!

When in New York City, visit the Lion Brand Yarn Studio where we have the largest selection of our yarns anywhere and over 100 classes and events monthly.

34 West 15th Street, NY, NY 10011

Copyright ©1998-2015 Lion Brand Yarn Company, all rights reserved. No pattern or other material may be reproduced -- mechanically, electronically, or by any other means, including photocopying -- without written permission of Lion Brand Yarn Company.