



**Free Knitting Pattern**  
**Lion Brand<sup>®</sup> LB Collection<sup>®</sup> Cotton Bamboo**  
**Graduated Eyelets Shawl**  
Pattern Number: L50051



*Designed by Irina Poludnenko.*

# Free Knitting Pattern from Lion Brand Yarn

## Lion Brand® LB Collection® Cotton Bamboo

### Graduated Eyelets Shawl

Pattern Number: L50051

**SKILL LEVEL:** Easy + (Level 3)

**SIZE:** One Size

About 25 x 81 1/2 in. (63.5 x 207 cm)

**CORRECTIONS:** (applied May 30, 2015)

Charts corrected.

#### **MATERIALS**

- 487-135 Lion Brand LB Collection Cotton

Bamboo Yarn:

Persimmon

6 Balls

- Lion Brand Split Ring Stitch Markers

- Lion Brand Large-Eye Blunt Needles (Set of 6)

- Additional Materials  
Circular knitting needle  
size 6 (4 mm), 36 in.  
(91.5 cm) long

*\*LB Collection Cotton Bamboo (Article #487).  
52% Cotton, 48% Rayon from Bamboo;  
package size: 3.50oz/100.00 gr.  
(245yds/224m) pull skeins*



#### **GAUGE:**

18 sts + 24 rows = 4 in. (10 cm) over Rows 1-16 of Eyelet Pattern I.

When you match the gauge in a pattern, your project will be the size specified in the pattern and the materials specified in the pattern will be sufficient. The needle or hook size called for in the pattern is based on what the designer used, but it is not unusual for gauge to vary from person to person. If it takes you fewer stitches and rows to make your swatch, try using a smaller size hook or needles; if more stitches and rows, try a larger size hook or needles.

Making a Gauge Swatch

#### **STITCH EXPLANATION:**

##### **yo (yarn over)**

An increase that also creates a small decorative hole (eyelet) in the fabric, worked as follows:

1. Bring yarn to front, between the needles.
2. Take yarn to back, over the right needle. This creates the new st. You are now ready to proceed with the next st as instructed.

#### **PATTERN STITCH**

### Seed St (worked over an odd number of sts)

**Row 1:** Sl 1, \*p1,k1; rep from \* to end of row.

**Row 2:** Sl 1, k the purl sts and p the knit sts across to the last st, k1 (this means you are knitting the slipped st from the previous row).

Rep Row 2 for Seed st.

### SPECIAL TECHNIQUE

**Cable Cast On:** Turn work so that the working yarn is coming from the sts on the left needle.

\*Insert right needle between first 2 sts on left needle; wrap yarn and pull through (as if knitting a st); transfer new st to left needle. Repeat from \* for desired number of sts.

### NOTES:

1. Shawl is worked in one piece with Seed st borders.
2. The first st of every row is always slipped as if to purl, with yarn at WS of work.
3. Center section of Shawl, between borders, is worked in 5 easy, graduated eyelet patterns. Eyelet patterns I-IV are all created by binding off groups of sts on one row, then casting on groups of sts on the following row. Experienced knitters will 'see' the eyelet bind off row as bind off 5 (or 4, 3, etc), knit 5 (4, 3, etc). We've written the pattern in a more detailed way so that less experienced knitters will understand how each st should be worked.
4. Charts are provided to clarify the eyelet patterns. When working from charts, read RS rows from right to left and WS rows from left to right.
5. At the end of a row in which sts were bound off, the total number of sts on your needle will be reduced. On the following row, after you've cast on sts, the st count will return to the original total.
6. A circular needle is used to accommodate the large number of sts. Work back and forth in rows on circular needle, just as if working on straight needles.

### SHAWL

Cast on 113 sts.

#### Beginning Border

Begin with Row 1, work in Seed st for 4 rows.

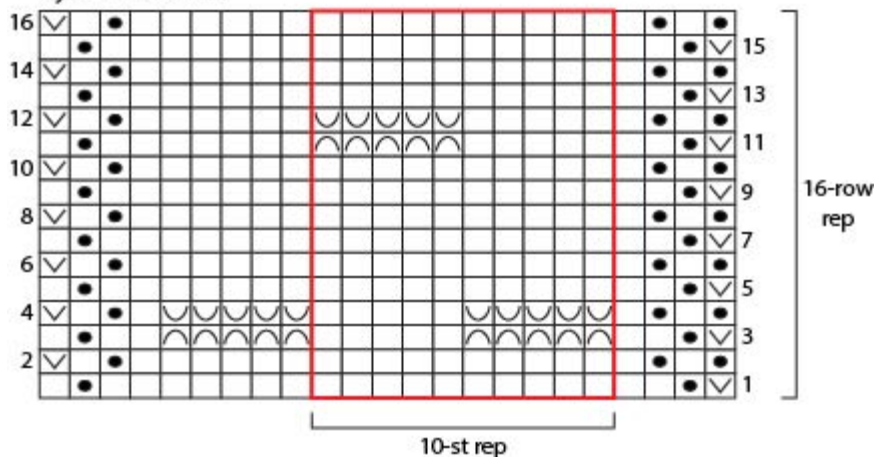
**Note:** As you work the various Eyelet patterns, refer to the charts as needed.

Key	
<input type="checkbox"/>	knit on RS, purl on WS
<input checked="" type="checkbox"/>	purl on RS, knit on WS
<input checked="" type="checkbox"/>	slip 1
<input type="checkbox"/>	yarn over
<input checked="" type="checkbox"/>	k2tog (knit 2 stitches together)
<input checked="" type="checkbox"/>	bind off
<input checked="" type="checkbox"/>	cast on
<input type="checkbox"/>	repeat

#### Eyelet Pattern I

Eyelets in Eyelet Pattern I are made by binding off sts in groups of 5, with 5 St sts between each group of bound-off sts.

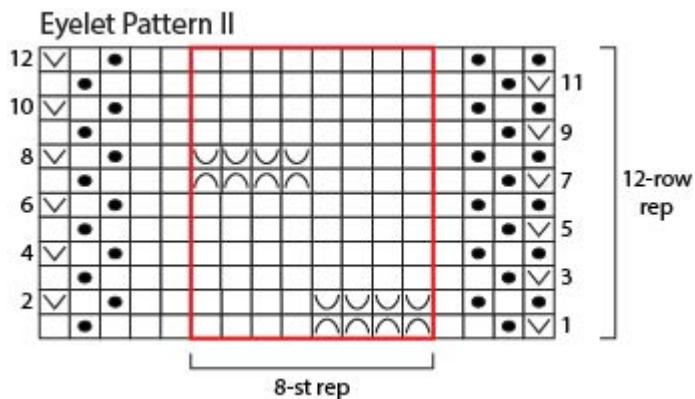
### Eyelet Pattern I



- Row 1 (RS):** Sl 1, continue in Seed st over next 2 sts for side border, place marker (pm), knit to last 3 sts, pm, continue in Seed st to end of row.
- Row 2:** Sl 1, work in Seed st to marker, slip marker (sm), purl to next marker, sm, work in Seed st to end of row.
- Row 3:** Sl 1, work in Seed st to marker, sm, k1, \*k2, pass 2nd st on right needle over first st and off needle, (k1, pass 2nd st on right needle over first st and off needle) 4 times, k4; rep from \* to last 6 sts before marker, bind off next 5 sts, sm, work in Seed st to end of row.
- Row 4:** Sl 1, work in Seed st to marker, sm, purl across to next marker, casting on 5 sts (using cable cast on method) over each group of bound-off sts, sm, work in Seed st to end of row.
- Row 5:** Work as established, slipping the first st, keeping sts outside of markers in Seed st, remaining sts in St st (k on RS, p on WS), and slipping markers as you come to them.
- Rows 6-10:** Rep Row 5.
- Row 11:** Sl 1, work in Seed st to marker, sm, k6, \*k2, pass 2nd st on right needle over first st and off needle, (k1, pass 2nd st on right needle over first st and off needle) 4 times, k4; rep from \* to last st before marker, k last st, sm, work in Seed st to end of row.
- Row 12:** Rep Row 4.
- Rows 13-16:** Rep Row 5.
- Rep Rows 1-16 five more times.

### Eyelet Pattern II

Eyelets in Eyelet Pattern II are made by binding off sts in groups of 4, with 4 St sts between each group of bound-off sts.



- Row 1 (RS):** Sl 1, work in Seed st to marker, sm, k1, \*k2, pass 2nd st on right needle over first st and off needle, (k1, pass 2nd st on right needle over first st and off needle) 3 times, k3; rep from \* to last 2 sts before marker, k2, sm, work in Seed st to end of row.
- Row 2:** Sl 1, work in Seed st to marker, sm, purl to next marker, casting on 4 sts over each group of bound-off sts, sm, work in Seed st to end of row.

**Row 3:** Work as established, slipping the first st, keeping sts outside of markers in Seed st, remaining sts in St st, and slipping markers as you come to them.

**Rows 4-6:** Rep Row 3.

**Row 7:** Sl 1, work in Seed st to marker, sm, k5, \*k2, pass 2nd st on right needle over first st and off needle, (k1, pass 2nd st on right needle over first st and off needle) 3 times, k3; rep from \* to last 6 sts before marker, k2, pass 2nd st on right needle over first st and off needle, (k1, pass 2nd st on right needle over first st and off needle) 3 times, k1, sm, work in Seed st to end of row.

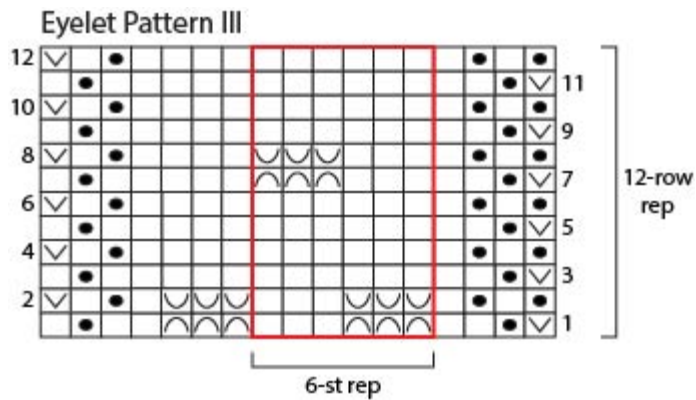
**Row 8:** Rep Row 2.

**Rows 9-12:** Rep Row 3.

Rep Rows 1-12 seven more times.

### Eyelet Pattern III

Eyelets in Eyelet Pattern III are made by binding off sts in groups of 3, with 3 St sts between each group of bound-off sts.



**Row 1 (RS):** Sl 1, work in Seed st to marker, sm, k1, \*k2, pass 2nd st on right needle over first st and off needle, (k1, pass 2nd st on right needle over first st and off needle) twice, k2; rep from \* to last 4 sts before marker, k2, pass 2nd st on right needle over first st and off needle, (k1, pass 2nd st on right needle over first st and off needle) twice, sm, work in Seed st to end of row.

**Row 2:** Sl 1, work in Seed st to marker, sm, purl to next marker, casting on 3 sts over each group of bound-off sts, sm, work in Seed st to end of row.

**Row 3:** Work as established, slipping the first st, keeping sts outside of markers in Seed st, remaining sts in St st, and slipping markers as you come to them.

**Rows 4-6:** Rep Row 3.

**Row 7:** Sl 1, work in Seed st to marker, sm, k4, \*k2, pass 2nd st on right needle over first st and off needle, (k1, pass 2nd st on right needle over first st and off needle) twice, k2; rep from \* to last st before marker, k1, sm, work in Seed st to end of row.

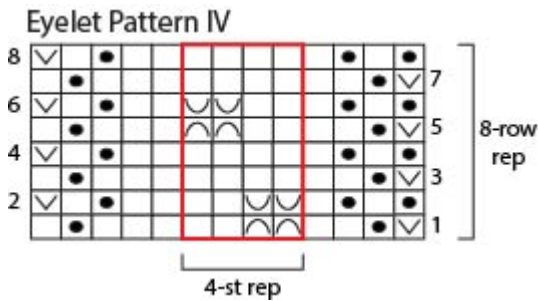
**Row 8:** Sl 1, work in Seed st to marker, sm, purl to next marker, casting on 3 sts over each group of bound-off sts, sm, work in Seed st to end of row.

**Rows 9-12:** Rep Row 3.

Rep Rows 1-12 seven more times.

### Eyelet Pattern IV

Eyelets in Eyelet Pattern IV are made by binding off sts in groups of 2, with 2 St sts between each group of bound-off sts.



**Row 1 (RS):** Sl 1, work in Seed st to marker, sm, k1, \*k2, pass 2nd st on right needle over first st and off needle, k1, pass 2nd st on right needle over first st and off needle, k1; rep from \* to last 2 sts before marker, k2, sm, work in Seed st to end of row.

**Row 2:** Sl 1, work in Seed st to marker, sm, purl to next marker, casting on 2 sts over each group of bound-off sts, sm, work in Seed st to end of row.

**Rows 3 and 4:** Work as established, slipping the first st, keeping sts outside of markers in Seed st, remaining sts in St st, and slipping markers as you come to them.

**Row 5:** Sl 1, work in Seed st to marker, sm, k3, \*k2, pass 2nd st on right needle over first st and off needle, k1, pass 2nd st on right needle over first st and off needle, k1; rep from \* to next marker, sm, work in Seed st to end of row.

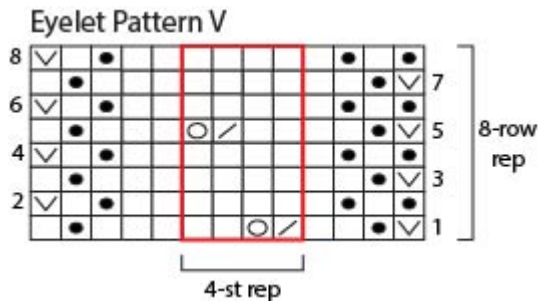
**Row 6:** Rep Row 2.

**Rows 7 and 8:** Rep Rows 3 and 4.

Rep Rows 1-8 eleven more times.

### Eyelet Pattern V

Eyelets in Eyelet Pattern V are made by working k2tog matched with yo's.



**Row 1 (RS):** Sl 1, work in Seed st to marker, sm, k1, \*k2tog, yo, k2; rep from \* to last 2 sts before marker, k2, sm, work in Seed st to end of row.

**Rows 2-4:** Sl 1, work in Seed st to marker, sm, work in St st to next marker, sm, work in Seed st to end of row.

**Row 5:** Sl 1, work in Seed st to marker, sm, k3, \*k2tog, yo, k2; rep from \* to next marker, sm, work in Seed st to end of row.

**Rows 6-8:** Rep Rows 2-4.

Rep Rows 1-8 eleven more times.

### Ending Border

Work same as beginning border.

Bind off.

### FINISHING

Weave in ends.

<b>ABBREVIATIONS / REFERENCES</b>	
Click for explanation and illustration	
<u>beg = begin(s)(ning)</u>	<u>k = knit</u>
<u>k2tog = knit 2 together</u>	<u>p = purl</u>
<u>rep = repeat(s)(ing)</u>	<u>RS = right side</u>
<u>sl = slip</u>	<u>St st = Stockinette stitch</u>
<u>st(s) = stitch(es)</u>	

Learn to knit instructions: <http://learnToKnit.LionBrand.com>

Every effort has been made to have the knitting and crochet instructions accurate and complete. We cannot be responsible for variance of individual knitters and crocheters, human errors, or typographical mistakes.

We want your project to be a success! If you need help with this or any other Lion Brand pattern, e-mail support is available 7 days per week. Just click [here](#) to explain your problem and someone will help you!

**For thousands of free patterns, visit our website [www.LionBrand.com](http://www.LionBrand.com)**

**To order visit our website [www.lionbrand.com](http://www.lionbrand.com) or call: (800) 258-YARN (9276) any time!**

**When in New York City, visit the Lion Brand Yarn Studio where we have the largest selection of our yarns anywhere and over 100 classes and events monthly.**

**34 West 15th Street, NY, NY 10011**

Copyright ©1998-2015 Lion Brand Yarn Company, all rights reserved. No pattern or other material may be reproduced -- mechanically, electronically, or by any other means, including photocopying -- without written permission of Lion Brand Yarn Company.