



## Free Knitting Pattern

# Lion Brand<sup>®</sup> LB Collection<sup>®</sup> Superwash Merino Updated Colorwork Poncho And Fingerless Gloves

Pattern Number: L50035



*Designed by Irina Poludnenko.*

**Free Knitting Pattern from Lion Brand Yarn**  
**Lion Brand<sup>®</sup> LB Collection<sup>®</sup> Superwash Merino**  
**Updated Colorwork Poncho And Fingerless Gloves**  
Pattern Number: L50035

**SKILL LEVEL:** Intermediate (Level 3)

**SIZE:** One Size

**Poncho**

**Finished Length** About 21 in. (53.5 cm)

**Gloves**

**Finished Circumference** About 6 in. (15 cm)

**Finished Length** About 9 1/2 in. (24 cm)

**CORRECTIONS:** None as of May 30, 2015. To check for later updates, click [here](#).

**MATERIALS**

- 486-111 [Lion Brand LB Collection Superwash Merino: Midnight Blue](#)  
3 Balls (A)
- 486-112 [Lion Brand LB Collection Superwash Merino: Dahlia](#)  
1 Ball (B)
- 486-103 [Lion Brand LB Collection Superwash Merino: Coral](#)  
1 Ball (C)
- 486-194 [Lion Brand LB Collection Superwash Merino: Acid Green](#)  
1 Ball (D)
- 486-130 [Lion Brand LB Collection Superwash Merino: Grass](#)  
1 Ball (E)
- 486-178 [Lion Brand LB Collection Superwash Merino: Teal](#)  
1 Ball (F)
- 486-102 [Lion Brand LB Collection Superwash Merino: Aqua](#)  
1 Ball (G)
- 486-147 [Lion Brand LB Collection Superwash Merino: Purple](#)  
1 Ball (H)
- [Boye Aluminum Circular Knitting Needles 29 inches Size 6](#)

*\*LB Collection Superwash Merino (Article #486).  
100% Superwash Merino Wool; package size:  
3.50oz/100.00 gr. (306yds/280m) pull skeins*



- [Lion Brand Split Ring Stitch Markers](#)
- [Lion Brand Large-Eye Blunt Needles \(Set of 6\)](#)

## GAUGE:

24 sts + 28 rows = about 4 in. (10 cm) working in St st (k on RS, p on WS), following chart.

When you match the gauge in a pattern, your project will be the size specified in the pattern and the materials specified in the pattern will be sufficient. The needle or hook size called for in the pattern is based on what the designer used, but it is not unusual for gauge to vary from person to person. If it takes you fewer stitches and rows to make your swatch, try using a smaller size hook or needles; if more stitches and rows, try a larger size hook or needles.

[Making a Gauge Swatch](#)

## STITCH EXPLANATION:

### STITCH PATTERN

**2 x 2 Seed St (worked over a multiple of 4 sts + 2 additional sts)**

**Row 1 (RS):** K1, \*k2, p2; rep from \* to last st, k1.

**Row 2:** P1, \*p2, k2; rep from \* to last st, p1.

Rep Rows 1 and 2 for 2 x 2 Seed st.

**K2, p2 Rib (worked over a multiple of 4 sts + 2 additional sts)**

**Row 1:** K2, \*p2, k2; rep from \* to end of row.

**Row 2:** K the knit sts and p the purl sts.

Rep Row 2 for K2, p2 Rib.

## NOTES:

1. Poncho is worked in one piece in St st (k on RS, p on WS) with 2 x 2 Seed st borders.
2. St st portion of Poncho and Gloves are worked in stranded colorwork, carrying unused color across WS of work.
3. Colorwork is worked by following a chart, changing yarn color following the written instruction.
4. When working from chart, read RS rows from right to left and WS rows from left to right.
5. A circular needle is used to accommodate the large number of sts on the Poncho. Work back and forth in rows on circular needle, as if working on straight needles.
6. The lower border and collar of the Poncho are worked from sts picked up along the edges of the Poncho.
7. Gloves are seamed, leaving an opening for thumb.



## **PONCHO**

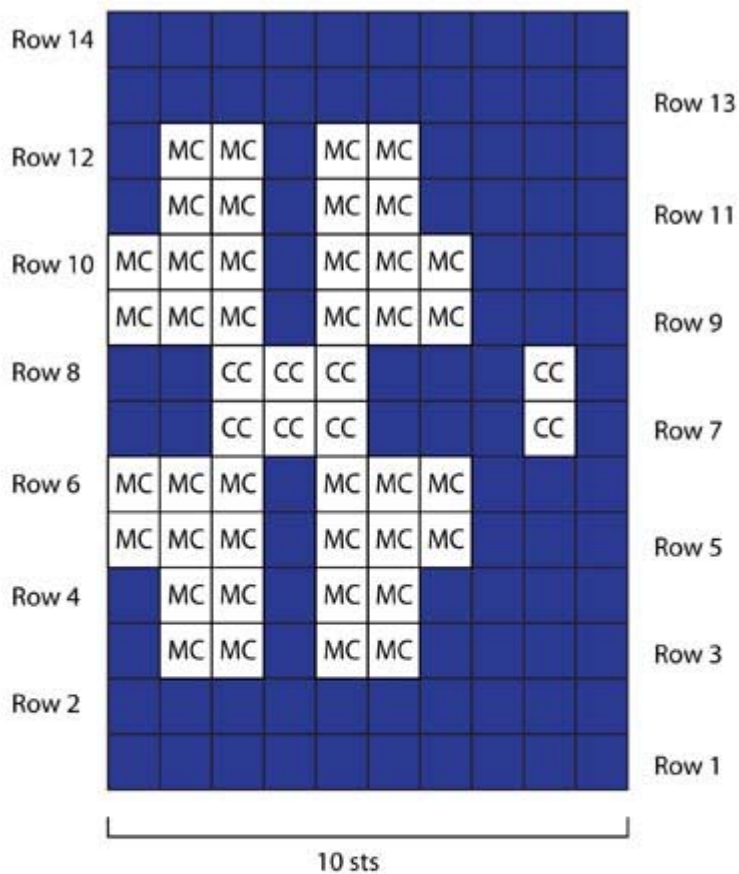
With A, cast on 102 sts.

**Note:** Work back and forth in rows on circular needle as if working on straight needles.

### **Beginning Border**

Beginning with Row 1, work in 2 x 2 Seed st for 2 in. (5 cm), end with a Row 2 as the last row you work.

**Note:** Poncho will now be worked in alternating sections of Checkerboard and chart patterns.



- = #111 Midnight Blue (A)
- MC = Main Color
- CC = Contrast Color

**\*Checkerboard 1**

**Row 1 (RS):** With B, k1, \*with B, k2, with G, k2; rep from \* to last st, with G, k1.

**Row 2:** With G, p1, \*with G, p2, with B, p2; rep from \* to last st, with B, p1.

**Chart**

**Row 1 (RS):** With A, knit.

**Row 2:** With A, purl.

**Row 3:** With A, k1, following Row 3 of chart and with F as MC, knit to last st, with A, k last st.

**Row 4:** With A, p1, working in St st (k on RS, p on WS), work Row 4 of chart across to last st, with A, p1.

**Rows 5-14:** Continue as established, working first and last sts in St st with A, remaining sts in St st following chart and with F as MC and D as CC.

**Checkerboard 2**

**Row 1 (RS):** With F, k1, \*with F, k2, with H, k2; rep from \* to last st, with H, k1.

**Row 2:** With H, p1, \*with H, p2, with F, p2; rep from \* to last st, with F, p1.

**Chart**

Work Rows 1-14 of chart with C as MC and E as CC.

**Checkerboard 3**

**Row 1 (RS):** With D, k1, \*with D, k2, with B, k2; rep from \* to last st, with B, k1.

**Row 2:** With B, p1, \*with B, p2, with D, p2; rep from \* to last st, with D, p1.

#### **Chart**

Work Rows 1-14 of chart with G as MC and H as CC.

#### **Checkerboard 4**

**Row 1 (RS):** With C, k1, \*with C, k2, with F, k2; rep from \* to last st, with F, k1.

**Row 2:** With F, p1, \*with F, p2, with C, p2; rep from \* to last st, with C, p1.

#### **Chart**

Work Rows 1-14 of chart with E as MC and B as CC.

#### **Checkerboard 5**

**Row 1 (RS):** With E, k1, \*with E, k2, with D, k2; rep from \* to last st, with D, k1.

**Row 2:** With D, p1, \*with D, p2, with E, p2; rep from \* to last st, with E, p1.

#### **Chart**

Work Rows 1-14 of chart with H as MC and G as CC.

#### **Checkerboard 6**

**Row 1 (RS):** With H, k1, \*with H, k2, with C, k2; rep from \* to last st, with C, k1.

**Row 2:** With C, p1, \*with C, p2, with H, p2; rep from \* to last st, with H, p1.

#### **Chart**

Work Rows 1-14 of chart with B as MC and F as CC.

#### **Checkerboard 7**

**Row 1 (RS):** With G, k1, \*with G, k2, with E, k2; rep from \* to last st, with E, k1.

**Row 2:** With E, p1, \*with E, p2, with G, p2; rep from \* to last st, with G, p1.

#### **Chart**

Work Rows 1-14 of chart with D as MC and C as CC.

Rep from \* twice more, then rep Checkerboard 1 one more time.

#### **Ending Border**

With A, work in 2 x 2 Seed st for 2 in. (5 cm).

Bind off.

### **FINISHING**

#### **Border**

From RS with A, pick up and k282 sts evenly spaced along one long edge of piece.

Beginning with Row 2, work in 2 x 2 Seed st until border measures about 2 in. (5 cm).

Bind off.

#### **Collar**

Place a marker at center of opposite long edge of Poncho.

Place markers on each side of center marker, 10 in. (25.5 cm) from center marker. Remove center marker. The 20 in. (51 cm) between markers is the collar edge.

From RS, with A, pick up and k114 sts evenly spaced along collar edge between markers.

Beginning with Row 2, work in 2 x 2 Seed st for about 2 3/4 in. (7 cm).

Bind off.

Seam sides of piece below collar for center front seam.

Weave in ends.

#### **GLOVES (make 2)**

With A, cast on 42 sts.

Work in K2, p2 Rib for 3 1/2 in. (9 cm).

**Note:** Glove will now be worked in alternating sections of Checkerboard and chart patterns.

### Checkerboard 1

**Row 1 (RS):** With B, k1, \*with B, k2, with F, k2; rep from \* to last st, with F, k1.

**Row 2:** With F, p1, \*with F, p2, with B, p2; rep from \* to last st, with B, p1.

### Chart

**Row 1 (RS):** With A, knit.

**Row 2:** With A, purl.

**Row 3:** With A, k1, following Row 3 of chart and with D as MC, knit to last st, with A, k last st.

**Row 4:** With A, p1, working in St st, work Row 4 of chart across to last st, with A, p1.

**Rows 5-14:** Continue as established, working first and last sts in St st with A, remaining sts in St st following chart and with D as MC and C as CC.

### Checkerboard 2

**Row 1 (RS):** With H, k1, \*with H, k2, with E, k2; rep from \* to last st, with E, k1.

**Row 2:** With E, p1, \*with E, p2, with H, p2; rep from \* to last st, with H, p1.

### Chart

Work Rows 1-14 of chart with B as MC and F as CC.

### Checkerboard 3

**Row 1 (RS):** With G, k1, \*with G, k2, with D, k2; rep from \* to last st, with D, k1.

**Row 2:** With D, p1, \*with D, p2, with G, p2; rep from \* to last st, with G, p1.

### Chart

Work Rows 1-14 of chart with C as MC and H as CC.

With A, work in Garter st (knit every row) for 4 rows.

Bind off.

Cut yarn, leaving a long yarn tail for sewing.

## FINISHING

Sew sides of Glove together, leaving 1 1/2 in. (4 cm) unsewn for thumb opening.

Rep with 2nd Glove.

Weave in ends.

| <b>ABBREVIATIONS / REFERENCES</b>      |                           |
|--|---------------------------|
| Click for explanation and illustration |                           |
| <u>k = knit</u>                        | <u>p = purl</u>           |
| <u>rep = repeat(s)(ing)</u>            | <u>RS = right side</u>    |
| <u>St st = Stockinette stitch</u>      | <u>st(s) = stitch(es)</u> |
| <u>WS = wrong side</u>                 |                           |

Learn to knit instructions: <http://learnToKnit.LionBrand.com>

Every effort has been made to have the knitting and crochet instructions accurate and complete. We cannot be responsible for variance of individual knitters and crocheters, human errors, or typographical mistakes.

We want your project to be a success! If you need help with this or any other Lion Brand pattern, e-mail support is available 7 days per week. Just click [here](#) to explain your problem and someone will help you!

**For thousands of free patterns, visit our website [www.LionBrand.com](http://www.LionBrand.com)  
To order visit our website [www.lionbrand.com](http://www.lionbrand.com) or call: (800) 258-YARN (9276) any time!**

**When in New York City, visit the Lion Brand Yarn Studio where we have the largest selection of  
our yarns anywhere and over 100 classes and events monthly.  
34 West 15th Street, NY, NY 10011**

Copyright ©1998-2015 Lion Brand Yarn Company, all rights reserved. No pattern or other material may be reproduced -- mechanically, electronically, or by any other means, including photocopying -- without written permission of Lion Brand Yarn Company.