



Free Crochet Pattern
Lion Brand® Landscapes®
Crosshatch Hat
Pattern Number: L50104



Designed by Teresa Chorzepa.

Free Crochet Pattern from Lion Brand Yarn

Lion Brand® Landscapes®

Crosshatch Hat

Pattern Number: L50104

SKILL LEVEL: Easy (Level 2)

SIZE: One Size

Finished Circumference About 17 in. (43 cm), Hat will stretch to fit a range of sizes

Finished Height About 11 in. (28 cm)

CORRECTIONS: None as of Jun 24, 2015. To check for later updates, click [here](#).

MATERIALS

- 545-205 Lion Brand Landscapes: Apple Orchard
1 Ball
 - Lion Brand Crochet Hook - Size K-10.5 (6.5 mm)
 - Lion Brand Large-Eye Blunt Needles (Set of 6)
- *Landscapes (Article #545). 100% acrylic; package size: 3.50oz/100.00 gr. (147yds/134m) pull skeins*



GAUGE:

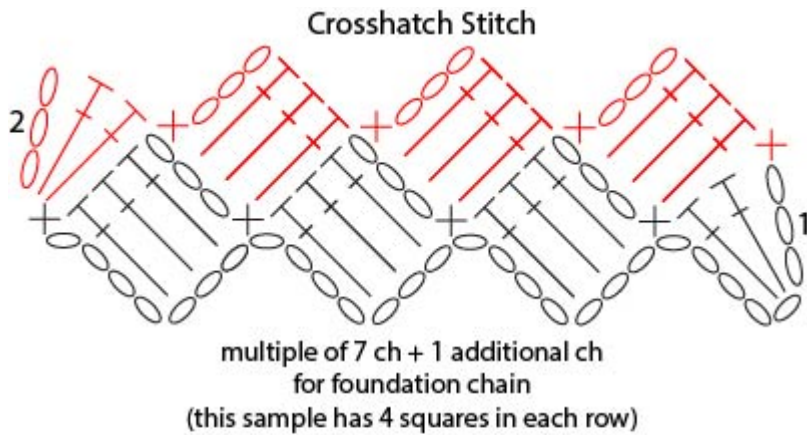
5 squares = about 7 in. (18 cm) in Crosshatch stitch pattern.

When you match the gauge in a pattern, your project will be the size specified in the pattern and the materials specified in the pattern will be sufficient. The needle or hook size called for in the pattern is based on what the designer used, but it is not unusual for gauge to vary from person to person. If it takes you fewer stitches and rows to make your swatch, try using a smaller size hook or needles; if more stitches and rows, try a larger size hook or needles.

Making a Gauge Swatch

NOTES:

1. Hat is crocheted as a rectangle in the Crosshatch stitch pattern. One long edge of the rectangle is gathered to make the top of Hat, then side edges are sewn together for back seam.
2. The Crosshatch stitch pattern is made up of rows of "squares". The squares in the first row 'lean' in one direction and the squares in the following row lean in the opposite direction. Refer to the stitch diagram to clarify the Crosshatch stitch pattern.



KEY	
○	= chain (ch)
X or +	= single crochet (sc)
┆	= double crochet (dc)

HAT

Ch 85.

Set up Row: Work 2 dc in 4th ch from hook (beg square made), sk next 3 ch, sc in next ch, *ch 3, dc in next 3 ch, sk next 3 ch, sc in next ch (square made); rep from * across – you will have 12 squares.

Next Row, Crosshatch Stitch Pattern: Ch 3 (counts as first dc), turn, 2 dc in first sc, *sk next 3 dc, (sc, ch 3, 2 dc) in next ch-3 sp, dc in next sc; rep from * to beg ch, sc in top of beg ch.

Rep last row until piece measures about 11 in. (28 cm) from beg.

Fasten off, leaving a long yarn tail. Thread yarn tail into blunt needle and weave through the last row. Pull tail to close opening at top of the Hat, then sew side edges together.

FINISHING

Weave in ends.

ABBREVIATIONS / REFERENCES	
Click for explanation and illustration	
beg = begin(s)(ning)	ch(s) = chain(s)
ch-space = space previously made	dc = double crochet
rep = repeat(s)(ing)	sc = single crochet
sk = skip	st(s) = stitch(es)

Learn to crochet instructions: <http://learnToCrochet.LionBrand.com>

Every effort has been made to have the knitting and crochet instructions accurate and complete. We cannot be responsible for variance of individual knitters and crocheters, human errors, or typographical mistakes.

We want your project to be a success! If you need help with this or any other Lion Brand pattern, e-mail support is available 7 days per week. Just click [here](#) to explain your problem and someone will help you!

**For thousands of free patterns, visit our website www.LionBrand.com
To order visit our website www.lionbrand.com or call: (800) 258-YARN (9276) any time!**

**When in New York City, visit the Lion Brand Yarn Studio where we have the largest selection of
our yarns anywhere and over 100 classes and events monthly.
34 West 15th Street, NY, NY 10011**

Copyright ©1998-2015 Lion Brand Yarn Company, all rights reserved. No pattern or other material may be reproduced -- mechanically, electronically, or by any other means, including photocopying -- without written permission of Lion Brand Yarn Company.