



Free Crochet Pattern
Lion Brand® Pound of Love®
Heirloom Sampler Baby Afghan
Pattern Number: L50138



Designed by Karen Hay.

Free Crochet Pattern from Lion Brand Yarn

Lion Brand® Pound of Love® Heirloom Sampler Baby Afghan Pattern Number: L50138

SKILL LEVEL: Easy (Level 2)

SIZE: One Size

About 28 x 35 in. (71 x 89 cm), not including border

CORRECTIONS: (applied Aug 11, 2015)

SQUARE X: CH-5 PICOT

...

Row 2: Ch 2 (does not count as a st in this row and in all following rows), turn, hdc in first 2 sts, (ch 1, sk next picot, hdc in next 5 sts) 3 times, ch 1, sk next picot, hdc in last 2 sts - 19 hdc and 4 ch-1 sps.

MATERIALS

- 550-099 Lion Brand Pound of Love Yarn: Antique White
1 Ball
**Pound of Love (Article #550). 100% Premium Acrylic; package size: 16.00oz/454.00 gr. (1020yds/932m) pull skeins*
- Lion Brand Crochet Hook - Size J-10 (6 mm)
- Lion Brand Large-Eye Blunt Needles (Set of 6)



GAUGE:

1 Square = about 7 x 7 in. (18 x 18 cm).

When you match the gauge in a pattern, your project will be the size specified in the pattern and the materials specified in the pattern will be sufficient. The needle or hook size called for in the pattern is based on what the designer used, but it is not unusual for gauge to vary from person to person. If it takes you fewer stitches and rows to make your swatch, try using a smaller size hook or needles; if more stitches and rows, try a larger size hook or needles.

Making a Gauge Swatch

STITCH EXPLANATION:

ch-5 picot Ch 5, sl st in top of last hdc made.

Cl (2 double crochet cluster) Yarn over, insert hook in indicated st and draw up a loop, yarn over and draw through 2 loops on hook (2 loops remain on hook), yarn over, insert hook in same st and draw up a loop, yarn over and draw through 2 loops on hook, yarn over and draw through all loops on hook.

fan 5 dc in indicated st or sp.

popcorn Work 4 dc in indicated st, drop loop from hook, insert hook in first dc of the 4-dc

group just made, return dropped loop to hook and draw it through the first dc.

sc2tog (single crochet 2 sts together) (Insert hook in next st or ch and draw up a loop) twice, yarn over and draw through all 3 loops on hook – 1 st decreased.

shell Work (2 dc, ch 1, 2 dc) in indicated st or sp.

V-st Work (dc, ch 1, dc) in indicated st or sp.

NOTES:

1. 20 Squares are worked separately - 2 Squares each in 10 different stitch patterns worked back and forth in rows.
2. All Squares except Square III, the Overlapping Fans Squares and Square IV, the Stacked Shells Squares, start with a RS row.
3. A border is worked around the outside edge of each Square.
4. Squares are sewn tog following a diagram, then a border is worked around the outside edge of the Afghan.
5. Pattern sts can be worked by following the written instructions or the diagrams. When following diagrams, read RS rows from right to left, and WS rows from left to right.

SQUARE I: GRIT STITCH (make 2)

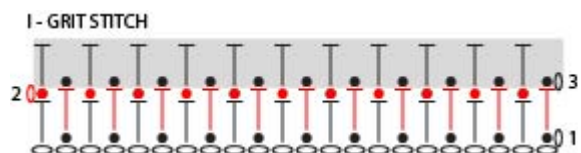
Ch 23.

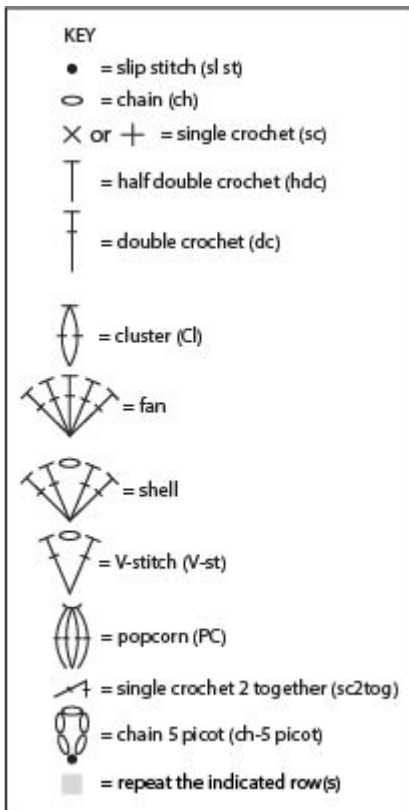
Row 1 (RS): Sl st in 2nd ch from hook, hdc in next ch, *sl st in next ch, hdc in next ch; rep from * across – you will have 22 sts.

Rows 2-26: Ch 1, turn, *sl st in next hdc, hdc in next sl st; rep from * across.

Border Rnd (RS): Ch 1, turn, 2 sc in first st for corner, (sc in next 4 sts, 2 sc in next st) 3 times, sc in next 5 sts, 2 sc in last st for corner; work 23 sc evenly spaced across side edge; working across opposite side of foundation ch, 2 sc in first ch for corner, (sc in next 4 ch, 2 sc in next ch) 3 times, sc in next 5 ch, 2 sc in last ch for corner; work 23 sc evenly spaced across side edge; join with sl st in first sc – 100 sts (25 sts across each of 4 sides, including the corner sts).

Fasten off.





SQUARE II: CLUSTER MESH (make 2)

Note: Each row of this Square begins with an hdc and ends with a dc, this creates even edges.

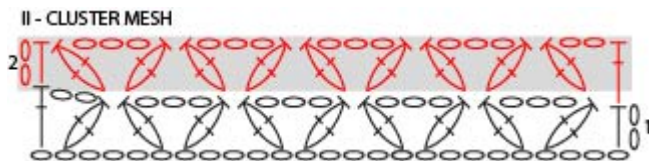
Ch 27.

Row 1 (WS): Hdc in 3rd ch from hook (2 skipped ch do not count as a st), sk next 2 ch, Cl in next ch, *ch 3, Cl in next ch, sk next 3 ch, Cl in next ch; rep from * to last ch, ch 2, dc in last ch – you will have 9 Cl, 1 ch-2 sp, and 4 ch-3 sps.

Rows 2-11: Ch 2 (does not count as a st), turn, hdc in first st, sk next ch-2 sp, Cl in next Cl, *ch 3, Cl in next Cl, sk next ch-3 sp, Cl in next Cl; rep from * to last st, ch 2, dc in top of last st.

Border Rnd (RS): Ch 1, turn, 2 sc in first st for corner, working into each st and ch across, sc in next 23 sts, 2 sc in last st for corner; work 23 sc evenly spaced across side edge; working across opposite side of foundation ch, 2 sc in first ch for corner, sc in next 23 ch, 2 sc in last ch for corner; work 23 sc evenly spaced across side edge; join with sl st in first sc – 100 sts (25 sts across each of 4 sides, including the corner sts).

Fasten off.



SQUARE III: OVERLAPPING FANS (make 2)

Ch 27.

Row 1 (WS): Hdc in 4th ch from hook (3 skipped ch count as first dc), sc in next 3 ch, hdc in next ch, dc in next ch, *hdc in next ch, sc in next 3 ch, hdc in next ch, dc in next ch; rep from * across – you will have 25 sts.

Row 2: Ch 1, turn, sc in first st, *sk next 2 sts, fan in next st, sk next 2 sts, sc in next st; rep from * 3 more times working last sc in top of beg ch – 5 sc and 4 fans.

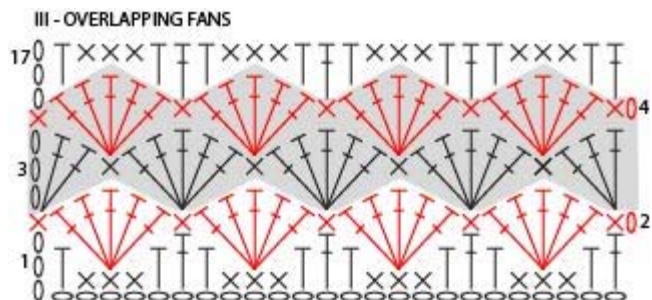
Row 3: Ch 3 (counts as first dc), turn, 2 dc in first st (half fan made), sk next 2 sts, sc in next st, *sk next 2 sts, fan in next st, sk next 2 sts, sc in next st; rep from * to last 3 sts, sk next 2 sts, 3 dc in last st (half fan made) – 3 fans, 2 half fans, and 4 sc.

Row 4: Rep Row 2.

Rows 5-16: Rep Rows 3 and 4 six times.

Row 17 (WS): Ch 3 (counts as first dc), turn, *hdc in next st, sc in next 3 sts, hdc in next st, dc in next st; rep from * across.

Border Rnd (RS): Ch 1, turn, 2 sc in first st for corner, sc in next 23 sts, 2 sc in last st (top of beg ch) for corner; work 23 sc evenly spaced across side edge; working across opposite side of foundation ch, 2 sc in first ch for corner, sc in next 23 ch, 2 sc in last ch for corner; work 23 sc evenly spaced across side edge; join with sl st in first sc – 100 sts (25 sts across each of 4 sides, including the corner sts).
Fasten off.



SQUARE IV: STACKED SHELLS (make 2)

Note: Each row, except the last, in this Square begins with an hdc and ends with a dc, this creates even edges.

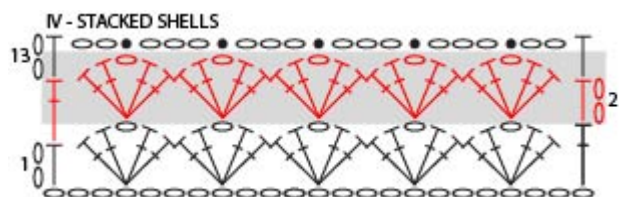
Ch 25.

Row 1 (WS): Hdc in 3rd ch from hook (2 skipped ch do not count as a st), sk next 2 ch, shell in next ch, (sk next 3 ch, shell in next ch) 4 times, sk next 2 ch, dc in last ch – 5 shells.

Rows 2-12: Ch 2 (does not count as a st), turn, hdc in first st, shell in ch-1 sp of each shell across, dc in last st.

Row 13: Ch 2 (does not count as a st), turn, hdc in first st, ch 2, sl st in ch-1 sp of first shell, (ch 3, sl st in ch-1 sp of next shell) 4 times, ch 2, hdc in last st – 2 hdc, 5 sl sts, 2 ch-2 sps, and 4 ch-3 sps.

Border Rnd (RS): Ch 1, turn, 2 sc in first st for corner, sc in next 2 ch, sc in next sl st, sc in next 3 ch, 2 sc in next sl st, sc in next 3 ch, sc in next sl st, sc in next 3 ch, 2 sc in next sl st, sc in next 3 ch, sc in next sl st, sc in next 2 ch, 2 sc in last st for corner; work 23 sc evenly spaced across side edge; working across opposite side of foundation ch, 2 sc in first ch for corner, sc in next 6 ch, 2 sc in next ch, sc in next 7 ch, 2 sc in next ch, sc in next 6 ch, 2 sc in last ch for corner; work 23 sc evenly spaced across side edge; join with sl st in first sc – 100 sts (25 sts across each of 4 sides, including the corner sts).
Fasten off.



SQUARE V: FANS AND V-STs (make 2)

Note: Each row, except the last, in this Square begins with an hdc and ends with a dc, this creates even edges.

Ch 25.

Row 1 (RS): Hdc in 3rd ch from hook (2 skipped ch do not count as a st), sk next 2 ch, fan in next ch, *sk next 3 ch, V-st in next ch, sk next 3 ch, fan in next ch; rep from * to last 3 ch, sk next 2 ch, dc in last ch – you will have 3 fans and 2 V-sts.

Row 2: Ch 2 (does not count as a st), turn, hdc in first st, ch 1, V-st in center st of first fan, *fan in ch-1 sp of next V-st, V-st in center st of next fan; rep from * across, ch 1, dc in last st – 2 fans and 3 V-sts.

Row 3: Ch 2 (does not count as a st), turn, hdc in first st, fan in ch-1 sp of first V-st, *V-st in center st of next fan, fan in ch-1 sp of next V-st; rep from * across, dc in last st – 3 fans and 2 V-sts.

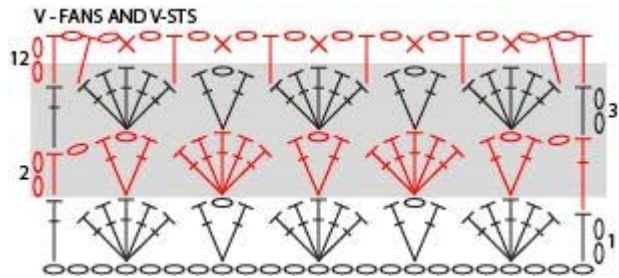
Rows 4-11: Rep Rows 2 and 3 four times.

Row 12: Ch 2 (does not count as a st), turn, hdc in first st, ch 1, hdc in next st, *ch 1, sk next st, sc in

next st (center st of fan), ch 1, sk next st, hdc in next st (last st of same fan), *ch 1, sc in ch-1 sp of next V-st, ch 1, hdc in first st of next fan, ch 1, sk next st, sc in next st, ch 1, sk next st, hdc in next st; rep from * to last st, ch 1, hdc in last st.

Border Rnd (RS): Ch 1, turn, 2 sc in first st for corner, sc in each ch-1 sp and st to last st, 2 sc in last st for corner; work 23 sc evenly spaced across side edge; working across opposite side of foundation ch, 2 sc in first ch for corner, (sc in next 6 ch, 2 sc in next ch) twice, sc in next 7 ch, 2 sc in last ch for corner; work 23 sc evenly spaced across side edge; join with sl st in first sc – 100 sts (25 sts across each of 4 sides, including the corner sts).

Fasten off.



SQUARE VI: TWEED STITCH (make 2)

Ch 26.

Row 1 (RS): Sc in 2nd ch from hook, *ch 1, sk next ch, sc in next ch; rep from * across – you will have 13 sc and 12 ch-1 sps.

Row 2: Ch 1, turn, sc in first st, sc in next ch-1 sp, *ch 1, sk next st, sc in next ch-1 sp; rep from * to last st, sc in last st – 14 sc and 11 ch-1 sps.

Row 3: Ch 1, turn, sc in first st, *ch 1, sk next st, sc in next ch-1 sp; rep from * to last 2 sts, ch 1, sk next st, sc in last st – 13 sc and 12 ch-1 sps.

Row 4: Rep Row 2.

Rows 5-26: Rep Rows 3 and 4 eleven times.

Border Rnd (RS): Ch 1, turn, 2 sc in first st for corner, sc in each st and ch-1 sp to last st, 2 sc in last st for corner; work 23 sc evenly spaced across side edge; working across opposite side of foundation ch, 2 sc in first ch for corner, sc in next 23 ch, 2 sc in last ch for corner; work 23 sc evenly spaced across side edge; join with sl st in first sc – 100 sts (25 sts across each of 4 sides, including the corner sts).

Fasten off.



SQUARE VII: POPCORN MESH (make 2)

Ch 28.

Row 1 (RS): Dc in 6th ch from hook (5 skipped ch count as base ch, dc, and first ch-1 sp), *ch 1, sk next ch, popcorn in next ch, ch 1, sk next ch, dc in next ch; rep from * to last 2 ch, ch 1, sk next ch, dc in last ch – you will have 5 popcorn and 8 dc in this row.

Row 2: Ch 4 (counts as first dc, ch 1), turn, sk first ch-1 sp, popcorn in next dc, *ch 1, sk next ch-1 sp, dc in next popcorn, ch 1, sk next ch-1 sp, popcorn in next dc; rep from * to last ch-1 sp, ch 1, sk last ch-1 sp, dc in 4th ch of beg ch – 6 popcorn and 7 dc.

Row 3: Ch 4 (counts as first dc, ch 1), turn, sk first ch-1 sp, dc in next popcorn, *ch 1, sk next ch-1 sp, popcorn in next dc, ch 1, sk next ch-1 sp, dc in next popcorn; rep from * to last ch-1 sp, ch 1, sk last ch-1 sp, dc in 3rd ch of beg ch – 5 popcorn and 8 dc.

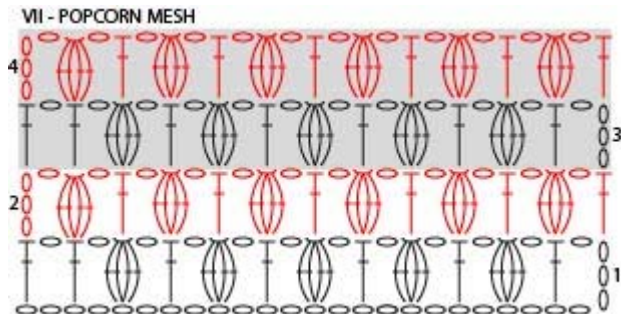
Row 4: Ch 4 (counts as first dc, ch 1), turn, sk first ch-1 sp, popcorn in next dc, *ch 1, sk next ch-1 sp, dc in next popcorn, ch 1, sk next ch-1 sp, popcorn in next dc; rep from * to last ch-1 sp, ch 1, sk last ch-1 sp, dc in 3rd ch of beg ch – 6 popcorn and 7 dc.

Rows 5-12: Rep Rows 3 and 4 four times.

Border Rnd (RS): Ch 1, turn, 2 sc in first st for corner, sc in each st and ch-1 sp across, 2 sc in 3rd ch of beg ch for corner; work 23 sc evenly spaced across side edge; working across opposite side of foundation

ch, 2 sc in first ch for corner, sc in next 23 ch, 2 sc in last ch for corner; work 23 sc evenly spaced across side edge; join with sl st in first sc – 100 sts (25 sts across each of 4 sides, including the corner sts).
Fasten off.

Push popcorn sts to RS of Square.



SQUARE VIII: LITTLE BOXES (make 2)

Ch 26.

Row 1 (RS): Beg in 2nd ch from hook, sc2tog as follows: insert hook into ch and draw up a loop, insert hook into next ch and draw up a loop, yarn over and through all 3 loops on hook, *ch 1, sc2tog into next 2 ch; rep from * to last ch, ch 1, sc in last ch – you will have 13 sc and 12 ch-1 sps.

Notes:

1. In Rows 2-24 you will work sc2tog sts over the next 2 sts. The next 2 sts are always an sc followed by a ch-1 sp. Take care not to skip the ch-1 sps! 2. To insert your hook into a ch-1 sp, go into the space beneath the ch-1, not into the top 2 loops of the ch-1 only.

Rows 2-24: Ch 1, turn, *insert hook in next sc and draw up a loop, insert hook in next ch-1 sp and draw up a loop, yarn over and draw through all 3 loops on hook, ch 1; rep from * to last st, ch 1, sc in last st.

Border Rnd (RS): Ch 1, turn, 2 sc in first st for corner, sc in each st and ch-1 sp across, 2 sc in last st for corner; work 23 sc evenly spaced across side edge; working across opposite side of foundation ch, 2 sc in first ch for corner, sc in next 23 ch, 2 sc in last ch for corner; work 23 sc evenly spaced across side edge; join with sl st in first sc – 100 sts (25 sts across each of 4 sides, including the corner sts).
Fasten off.



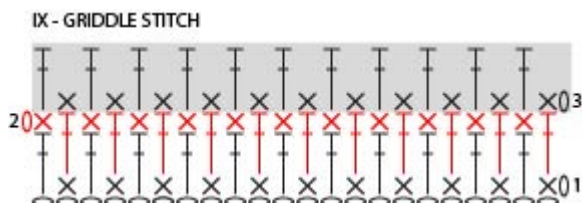
SQUARE IX: GRIDDLE STITCH (make 2)

Ch 23.

Row 1 (RS): Sc in 2nd ch from hook, dc in next ch, *sc in next ch, dc in next ch; rep from * across – you will have 22 sts.

Rows 2-20: Ch 1, turn, *sc in next dc, dc in next sc; rep from * across.

Border Rnd (RS): Ch 1, turn, 2 sc in first st for corner, (sc in next 4 sts, 2 sc in next st) 3 times, sc in next 5 sts, 2 sc in last st for corner; work 23 sc evenly spaced across side edge; working across opposite side of foundation ch, 2 sc in first ch for corner, (sc in next 4 ch, 2 sc in next ch) 3 times, sc in next 5 ch, 2 sc in last ch for corner; work 23 sc evenly spaced across side edge; join with sl st in first sc – 100 sts (25 sts across each of 4 sides, including the corner sts).
Fasten off.



SQUARE X: CH-5 PICOT (make 2)

Ch 25.

Row 1 (RS): Hdc in 3rd ch from hook (2 skipped ch do not count as a st), hdc in next ch, (ch-5 picot, sk next ch, hdc in next 5 ch) 3 times, ch-5 picot, sk next ch, hdc in last 2 ch – you will have 19 hdc and 4 ch-5 picots.

Row 2: Ch 2 (does not count as a st in this row and in all following rows), turn, hdc in first 2 sts, (ch 1, sk next picot, hdc in next 5 sts) 3 times, ch 1, sk next picot, hdc in last 2 sts – 19 hdc and 4 ch-1 sps.

Row 3: Ch 2, turn, hdc in first 2 sts, hdc in next ch-1 sp, hdc in next 2 sts, ch-5 picot, sk next st, (hdc in next 2 sts, hdc in next ch-1 sp, hdc in next 2 sts, ch-5 picot, sk next st) twice, hdc in next 2 sts, hdc in next ch-1 sp, hdc in last 2 sts – 20 hdc and 3 ch-5 picots.

Row 4: Ch 2, turn, hdc in first 5 sts, ch 1, sk next picot, (hdc in next 5 sts, ch 1, sk next picot) twice, hdc in last 5 sts – 20 hdc and 3 ch-1 sps.

Row 5: Ch 2, turn, dc in first 2 sts, (ch-5 picot, sk next st, hdc in next 2 sts, hdc in next ch-1 sp, hdc in next 2 sts) 3 times, ch-5 picot, sk next st, hdc in last 2 sts – 19 hdc and 4 ch-5 picots.

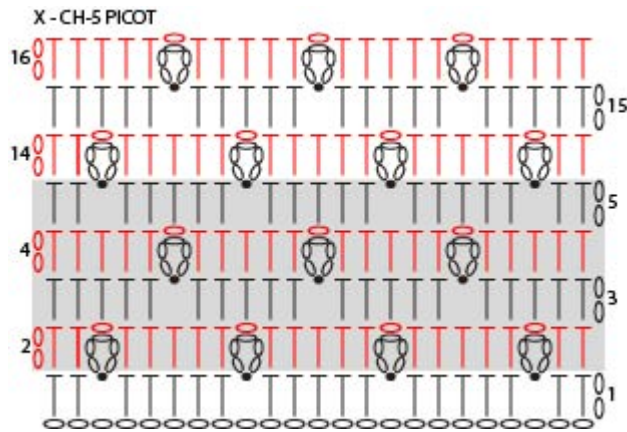
Rows 6-13: Rep Rows 2-5 twice.

Rows 14-16: Rep Rows 2-4.

Border Rnd (RS): Ch 1, turn, 2 sc in first st for corner, working in each dc and ch-1 sp, (sc in next 6 sts, 2 sc in next st) twice, sc in next 7 sts, 2 sc in last st for corner; work 23 sc evenly spaced across side edge; working across opposite side of foundation ch, 2 sc in first ch for corner, (sc in next 6 ch, 2 sc in next ch) twice, sc in next 7 ch, 2 sc in last ch for corner; work 23 sc evenly spaced across side edge; join with sl st in first sc – 100 sts (25 sts across each of 4 sides, including the corner sts).

Fasten off.

Push ch-5 picots to RS of Square.



FINISHING

Following diagram, sew Squares into 4 strips of 5 Squares each, then sew strips tog to make Afghan.

I GRIT STITCH	II CLUSTER MESH	III OVERLAPPING FANS	IV STACKED SHELLS
V FANS AND V-STES	VI TWEED STITCH	VII POPCORN MESH	VIII LITTLE BOXES
VIII LITTLE BOXES	IV STACKED SHELLS	IX GRIDDLE STITCH	X CH-5 PICOT
II CLUSTER MESH	III OVERLAPPING FANS	V FANS AND V-STES	VI TWEED STITCH
IX GRIDDLE STITCH	X CH-5 PICOT	I GRIT STITCH	VII POPCORN MESH

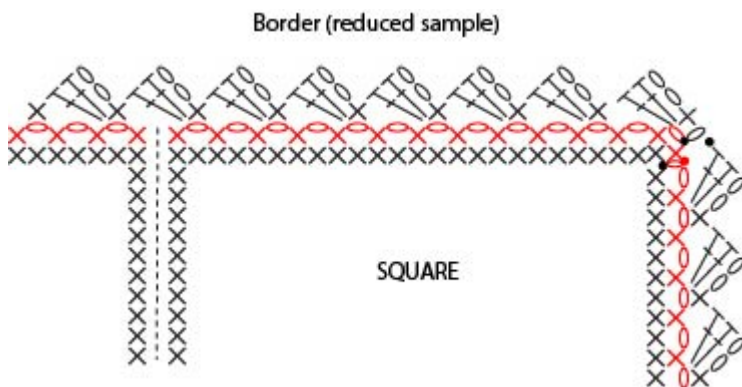
Border

Rnd 1 (RS): From RS, join yarn with sl st in first sc of any 2-sc corner, ch 1, sc in same sc, **ch 1, sc in next corner sc, *ch 1, sk next st (or seam between squares), sc in next st; rep from * working last sc in first sc of next corner; rep from ** 2 more times, ch 1, sc in next corner sc, ***ch 1, sk next st (or seam between squares), sc in next st; rep from *** to last st, ch 1, sk last st; join with sl st in first sc.

Rnd 2: (Sl st, ch 1, sc, ch 2, 2 dc) in first ch-1 sp, *sk next ch-1 sp, (sc, ch 2, 2 dc) in next ch-1 sp; rep from * to last ch-1 sp, sk last ch-1 sp; join with sl st in first sc.

Fasten off.

Weave in ends.



ABBREVIATIONS / REFERENCES	
Click for explanation and illustration	
<u>beg = begin(s)(ning)</u>	<u>ch(s) = chain(s)</u>
<u>ch-space = space previously made</u>	<u>dc = double crochet</u>
<u>hdc = half double crochet</u>	<u>rep = repeat(s)(ing)</u>
<u>rnd(s) = round(s)</u>	<u>RS = right side</u>
<u>sc = single crochet</u>	<u>sk = skip</u>
<u>sl st = slip stitch</u>	<u>sp(s) = space(s)</u>
<u>st(s) = stitch(es)</u>	<u>tog = together</u>
<u>WS = wrong side</u>	

Learn to crochet instructions: [**http://learnToCrochet.LionBrand.com**](http://learnToCrochet.LionBrand.com)

Every effort has been made to have the knitting and crochet instructions accurate and complete. We cannot be responsible for variance of individual knitters and crocheters, human errors, or typographical mistakes.

We want your project to be a success! If you need help with this or any other Lion Brand pattern, e-mail support is available 7 days per week. Just click [here](#) to explain your problem and someone will help you!

For thousands of free patterns, visit our website www.LionBrand.com

To order visit our website www.lionbrand.com or call: (800) 258-YARN (9276) any time!

When in New York City, visit the Lion Brand Yarn Studio where we have the largest selection of our yarns anywhere and over 100 classes and events monthly.

34 West 15th Street, NY, NY 10011

Copyright ©1998-2015 Lion Brand Yarn Company, all rights reserved. No pattern or other material may be reproduced -- mechanically, electronically, or by any other means, including photocopying -- without written permission of Lion Brand Yarn Company.