



Free Knitting Pattern
Lion Brand® Scarfie
Free Spirit Topper
Pattern Number: L50145



Free Knitting Pattern from Lion Brand Yarn

Lion Brand® Scarfie

Free Spirit Topper

Pattern Number: L50145

SKILL LEVEL: Easy (Level 2)

SIZE: One Size

About 30 x 27 in. (76 x 69 cm), after folding and seaming

CORRECTIONS: (applied Sep 9, 2015)

SIZE:

About 30 x ~~54~~ **27** in. (76 x ~~137~~ **69** cm), after folding and seaming

MATERIALS

- 826-200 Lion Brand Scarfie:
Taupe/Charcoal
4 Balls
- Lion Brand Knitting Needles-
Size 9 [5.5 mm]
- Lion Brand Split Ring Stitch
Markers
- Lion Brand Large-Eye Blunt
Needles (Set of 6)

**Scarfie (Article #826). 78% acrylic, 22% wool; package size:
5.30oz/150.00 gr. (312yds/285m) pull skeins*



GAUGE:

16 sts = about 4 in. (10 cm) in St st (k on RS, p on WS).

When you match the gauge in a pattern, your project will be the size specified in the pattern and the materials specified in the pattern will be sufficient. The needle or hook size called for in the pattern is based on what the designer used, but it is not unusual for gauge to vary from person to person. If it takes you fewer stitches and rows to make your swatch, try using a smaller size hook or needles; if more stitches and rows, try a larger size hook or needles.

Making a Gauge Swatch

NOTES:

1. Topper is worked in 2 halves, seamed together at back and sides.
2. Each half is worked in St st (k on RS, p on WS) with Seed st borders.
3. Each half begins at lower front edge and is worked up to shoulders. At shoulder, an extra st is cast on at center back. This st will be used in seaming the back.



RIGHT HALF

Front

Cast on 59 sts.

Seed st lower border

Row 1 (RS): K1, *p1, k1; rep from * to end of row.

Row 2: P the knit sts and k the purl sts.

Rep Row 2 for Seed st until piece measures about 4 in. (10 cm) from beg, end with a WS row as the last row you work.

Body

Row 1 (RS): Work in Seed st as established over first 8 sts for side border, place marker (pm), k to last 8 sts, pm, work in Seed st as established (for side border) to end of row.

Row 2: Work in Seed st as established to marker, slip marker (sm), p to next marker, sm, work in Seed st as established to end of row.

Keeping first and last 8 sts in Seed st as established and sts between markers in St st (k on RS, p on WS), and slipping markers as you come to them, work until piece measures about 31 in. (78.5 cm) from beg, end with a WS row as the last row you work.

Back

Note: On Row 1 of the back, you'll cast on one new st – this st will be used to seam the center back.

Row 1 (RS): Cast on 1 st, work in Seed st as established to marker, sm, k to next marker, sm, work in Seed st as established to end of row – you will have 60 sts at the end of this row.

Place a marker in the cast on st.

Continue as established, working sts outside of markers in Seed st, remaining sts in St st until piece measures about 50 in. (127 cm) from beg, end with a WS row as the last row you work.

Seed st lower border

Next Row (RS): Work in Seed st as established to marker, remove marker, continue in Seed st across to next marker, remove marker, work in Seed st to end of row.

Next Row: Work in Seed st across.

Rep last row until piece measures about 54 in. (137 cm) from beg.

Bind off.

LEFT HALF

Front

Work as for Right Half until piece measures about 31 in. (78.5 cm) from beg, end with a WS row as the last row you work.

Back

Row 1 (RS): Work in Seed st as established to marker, sm, k to next marker, sm, work in Seed st as established to end of row, cast on 1 st – you will have 60 sts at the end of this row. Place a marker in the cast on st. Continue as for Right Half to lower border, then work lower border as for Right Half.

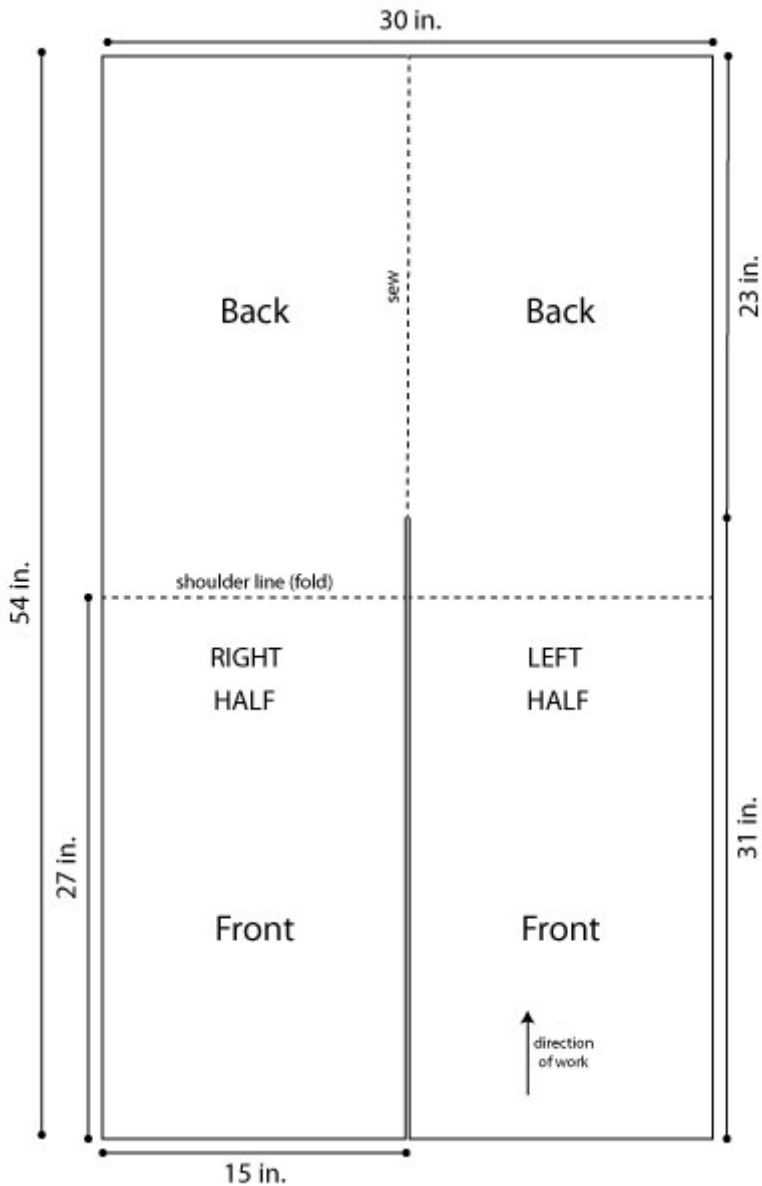
FINISHING

With RS facing, lay Halves side by side on a flat surface matching the markers that were placed on the cast on sts.

Sew Halves together from markers to bound off edges, then remove markers.

Fold piece in half at shoulder line. Place markers on both side edges about 9 in. (23 cm) below fold for armholes and about 8 in. (20.5 cm) above lower edge for side slits. Sew side seams between markers and remove markers.

Weave in ends.



ABBREVIATIONS / REFERENCES

[Click for explanation and illustration](#)

beg = begin(s)(ning)

k = knit

p = purl

rem = remain(s)(ing)

<u>rep = repeat(s)(ing)</u>	<u>RS = right side</u>
<u>St st = Stockinette stitch</u>	<u>st(s) = stitch(es)</u>
<u>WS = wrong side</u>	

Learn to knit instructions:[**http://www.lionbrand.com/learn/how-to-knit**](http://www.lionbrand.com/learn/how-to-knit)

Every effort has been made to have the knitting and crochet instructions accurate and complete. We cannot be responsible for variance of individual knitters and crocheters, human errors, or typographical mistakes.

We want your project to be a success! If you need help with this or any other Lion Brand pattern, e-mail support is available 7 days per week. Just click [here](#) to explain your problem and someone will help you!

For thousands of free patterns, visit our website www.LionBrand.com

To order visit our website www.lionbrand.com or call: (800) 258-YARN (9276) any time!

When in New York City, visit the Lion Brand Yarn Studio where we have the largest selection of our yarns anywhere and over 100 classes and events monthly.

34 West 15th Street, NY, NY 10011

Copyright ©1998-2016 Lion Brand Yarn Company, all rights reserved. No pattern or other material may be reproduced -- mechanically, electronically, or by any other means, including photocopying -- without written permission of Lion Brand Yarn Company.