



Free Crochet Pattern

LION BRAND® VANNA'S CHOICE®

BABY OWL CORNER-TO-CORNER (C2C) BLANKET

Pattern Number: BabyOwl



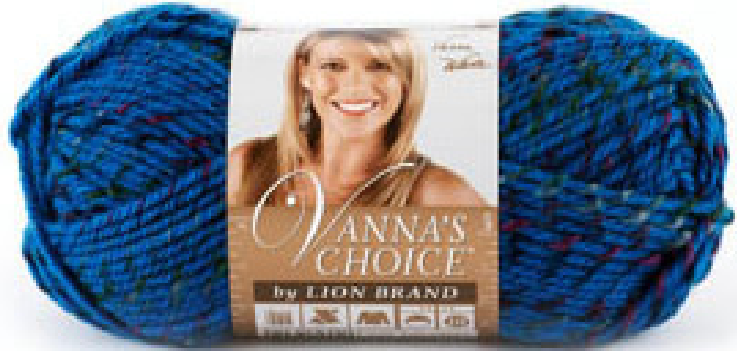
SKILL LEVEL – INTERMEDIATE (LEVEL 3)

SIZES

One Size: 35 x 35 inches 41x41 pixel squares

MATERIALS

- 860102 Lion Brand Vanna's Choice
Yarn: Aqua 2 Balls
- 860107 Lion Brand Vanna's Choice
Yarn: Sapphire 2 Balls
- 860105 Lion Brand Vanna's Choice
Yarn: Silver Blue 1 Ball
- 860099 Lion Brand Vanna's Choice
Yarn: Linen 4 Balls
- 860134 Lion Brand Vanna's Choice
Yarn: Terracotta 1 Ball
- 860100 Lion Brand Vanna's Choice
Yarn: White 1 Ball
- 860153 Lion Brand Vanna's Choice
Yarn: Black 1 Ball
- Lion Brand Crochet Hook Size H8 (5 mm)
- Lion Brand Large Eye
Blunt Needles (Set of 6)



GAUGE

5 squares = 4 inches

When you match the gauge in a pattern, your project will be the size specified in the pattern and the materials specified in the pattern will be sufficient. The needle or hook size called for in the pattern is based on what the designer used, but it is not unusual for gauge to vary from person to person. If it takes you fewer stitches and rows to make your swatch, try using a smaller size hook or needles; if more stitches and rows, try a larger size hook or needles.

Note:

The following corrections have been incorporated into the pattern below. We are highlighting the corrections separately here so that if you have printed out an earlier version of the pattern you'll know what was changed.

CORRECTIONS (applied Nov 3th, 2021)

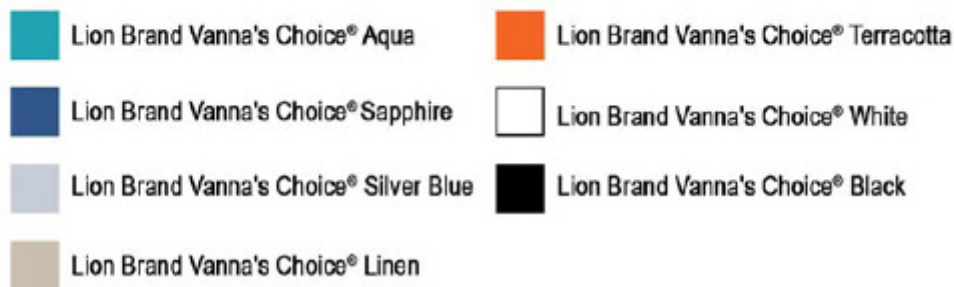
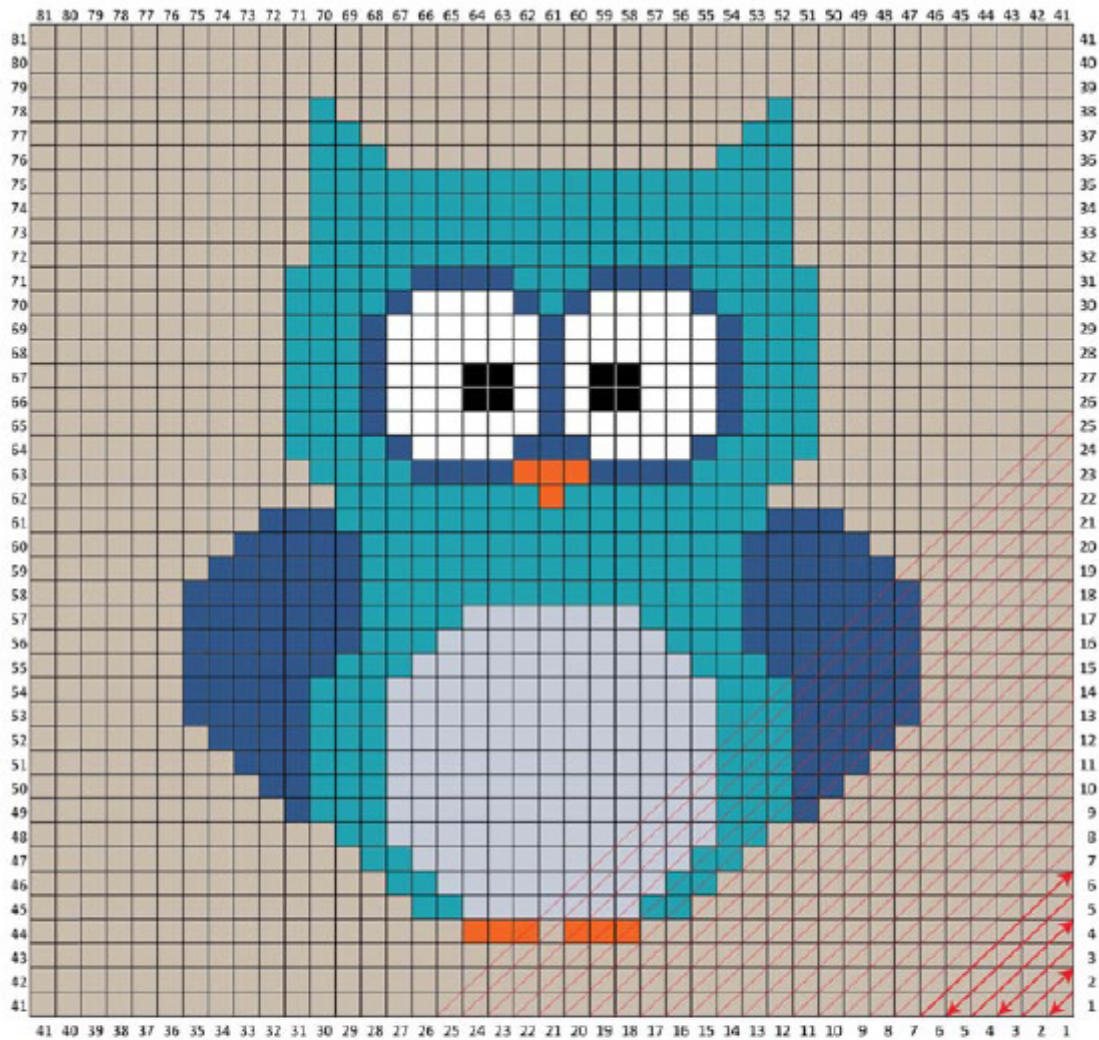
Row 67: 3L, ~~1S~~ 1A, 11L

For thousands of free patterns, visit our website www.LionBrand.com

To order visit our website www.lionbrand.com or call: (800) 258-YARN (9276) any time!

Copyright ©1998-2021 Lion Brand Yarn Company, all rights reserved. No pattern or other material may be reproduced -- mechanically, electronically, or by any other means, including photocopying - without written permission of Lion Brand Yarn Company.

Making a Gauge Swatch



Explanation of C2C stitch:

The CornertoCorner (C2C) technique of crocheting is made by starting in one corner of a pixel square graph (typically the bottom right hand corner) and following the graph row by row diagonally to the other corner (typically the top left hand corner). The C2C blankets have become a popular trend because of the ease and speed as to which these blankets work up and even more appealing because you can crochet any picture graph (like this owl) using this C2C method.

Each square in the graph = chain 3 + 3 DC

For thousands of free patterns, visit our website www.LionBrand.com

To order visit our website www.lionbrand.com or call: (800) 258-YARN (9276) any time!

Copyright ©1998-2021 Lion Brand Yarn Company, all rights reserved. No pattern or other material may be reproduced -- mechanically, electronically, or by any other means, including photocopying - without written permission of Lion Brand Yarn Company.

Increase Rows:

The first part of the graph is worked by making increases at the end of each row. You will start by chaining 6, making a DC in the 4th chain from hook and then 1 DC in each of the remaining 2 chains. You may now notice you have a chain 3 + 3 DC's.

Decrease Rows:

The second half of the graph is worked by making decreases at the end of each row. Instead of chaining 6 like you would when increasing, you will turn your work and slip stitch across the 3 DC's in the last square made. Join with slip st to the chain 3 and chain 3 + 3 DC.

How to follow the pattern:

Print out your graph. Start in the lower right hand corner and mark off each square as you go. The first square in the corner is row 1. You will work back and forth (down one row and back up the next). So row 2 of the graph will be read diagonally from left to right and row 3 from right to left. Or instead of following the graph, you can follow the written pattern below that lists the color changes, row by row.

Written Pattern for Color Changes:

S = Sapphire

A = Aqua

SB = Silver Blue

L = Linen

B = Black

W = White

T = Terracotta

Row 1: 1L

Row 2: 2L

Row 3: 3L

Row 4: 4L

Row 5: 5L

Row 6: 6L

Row 7: 7L

Row 8: 8L

Row 9: 9L

Row 10: 10L

Row 11: 11L

Row 12: 12L

Row 13: 13L

Row 14: 14L

Row 15: 15L

Row 16: 16L

Row 17: 17L

For thousands of free patterns, visit our website www.LionBrand.com

To order visit our website www.lionbrand.com or call: (800) 258-YARN (9276) any time!

Copyright ©1998-2021 Lion Brand Yarn Company, all rights reserved. No pattern or other material may be reproduced -- mechanically, electronically, or by any other means, including photocopying - without written permission of Lion Brand Yarn Company.

Row 18: 18L
Row 19: 6L, 5S, 8L
Row 20: 4L, 5A, 5S, 6L
Row 21: 6L, 5S, 6A, 1T, 3L
Row 22: 3L, 1T, 4SB, 3A, 5S, 6L
Row 23: 6L, 5S, 3A, 5SB, 1T, 3L
Row 24: 4L, 6SB, 3A, 5S, 6L
Row 25: 7L, 4S, 3A, 7SB, 1T, 3L
Row 26: 3L, 1T, 8SB, 2A, 5S, 7L
Row 27: 8L, 4S, 2A, 9SB, 1T, 3L
Row 28: 4L, 10SB, 1A, 5S, 8L
Row 29: 9L, 4S, 2A, 9SB, 1A, 4L
Row 30: 4L, 1A, 10SB, 2A, 4S, 9L
Row 31: 10L, 3S, 3A, 9SB, 1A, 5L
Row 32: 5L, 1A, 10SB, 3A, 2S, 11L
Row 33: 12L, 5A, 9SB, 1A, 6L
Row 34: 6L, 1A, 10SB, 7A, 10L
Row 35: 10L, 8A, 9SB, 1A, 7L
Row 36: 7L, 2A, 8SB, 9A, 10L
Row 37: 10L, 10A, 7SB, 2A, 8L
Row 38: 8L, 3A, 6SB, 5A, 3S, 3A, 10L
Row 39: 10L, 3A, 1S, 2W, 1S, 5A, 5SB, 3A, 1S, 8L
Row 40: 9L, 1S, 3A, 4SB, 5A, 1S, 3W, 1S, 3A, 10L
Row 41: 10L, 3A, 1S, 4W, 1S, 11A, 2S, 9L

START DECREASE

Row 42: 9L, 2S, 9A, 2T, 5W, 1S, 2A, 10L
Row 43: 9L, 3A, 3W, 1B, 1W, 1S, 1T, 9A, 3S, 8L
Row 44: 8L, 5S, 6A, 1T, 1S, 1W, 2B, 2W, 1S, 3A, 8L
Row 45: 7L, 4A, 3W, 1B, 1W, 3S, 5A, 6S, 7L
Row 46: 7L, 6S, 4A, 1S, 2W, 1S, 4W, 1S, 4A, 6L
Row 47: 5L, 5A, 1S, 3W, 1S, 3W, 1S, 3A, 7S, 6L
Row 48: 6L, 7S, 2A, 1S, 2W, 1B, 1W, 1S, 2W, 1S, 6A, 4L
Row 49: 3L, 7A, 3S, 1W, 2B, 2W, 3A, 6S, 6L
Row 50: 6L, 6S, 2A, 1S, 2W, 1B, 2W, 6A, 6L
Row 51: 6L, 5A, 1S, 5W, 2A, 1L, 5S, 6L
Row 52: 6L, 4S, 1L, 2A, 1S, 5W, 5A, 6L
Row 53: 6L, 4A, 1S, 4W, 1S, 2A, 11L

For thousands of free patterns, visit our website www.LionBrand.com

To order visit our website www.lionbrand.com or call: (800) 258-YARN (9276) any time!

Copyright ©1998-2021 Lion Brand Yarn Company, all rights reserved. No pattern or other material may be reproduced -- mechanically, electronically, or by any other means, including photocopying - without written permission of Lion Brand Yarn Company.

Row 54: 10L, 3A, 1S, 3W, 1S, 4A, 6L

Row 55: 6L, 4A, 1S, 2W, 1S, 3A, 10L

Row 56: 10L, 3A, 3S, 4A, 6L

Row 57: 6L, 9A, 10L

Row 58: 10L, 8A, 6L

Row 59: 6L, 7A, 10L

Row 60: 10L, 6A, 6L

Row 61: 6L, 5A, 10L

Row 62: 11L, 3A, 6L

Row 63: 5L, 3A, 11L

Row 64: 11L, 2A, 5L

Row 65: 4L, 2A, 11L

Row 66: 11L, 1A, 4L

Row 67: 3L, 1A, 11L

Row 68: 14L

Row 69: 13L

Row 70: 12L

Row 71: 11L

Row 72: 10L

Row 73: 9L

Row 74: 8L

Row 75: 7L

Row 76: 6L

Row 77: 5L

Row 78: 4L

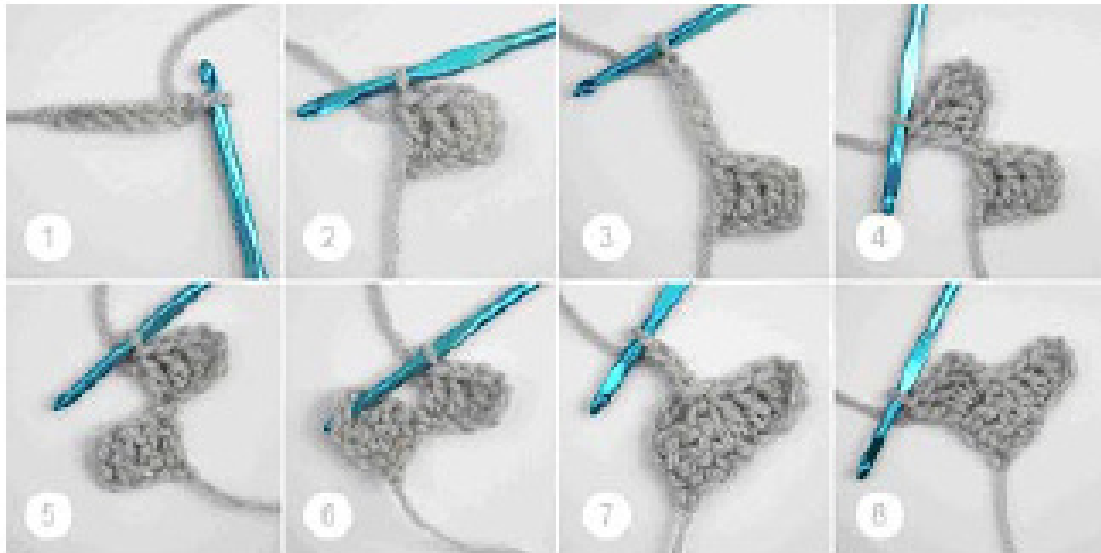
Row 79: 3L

Row 80: 2L

Row 81: 1L

How to start your C2C Owl Graph:

Starting in the bottom right hand corner of the graph with Linen color yarn and a size H crochet hook.



Step 1: Chain 6.

Step 2: DC in 4th chain from hook. DC in last two chains. You now have a chain 3 space and a total of 3 DC stitches. This completes your first square and row 1.

Step 3: Chain 6.

Step 4: DC in 4th chain from hook. DC in last two chains.

Step 5: Turn your work. At this point turning consists of just flipping over the first square.

Step 6: Slip stitch to join to the chain 3 space from the first square.

Step 7: Chain 3.

Step 8: Make 3 DC in chain 3 space. This completes your second two squares and row 2.

Continue by Chaining 6, DC in 4th Chain from hook and in last to chains, turn and join to chain 3 space in last square made from previous row.

How to Change Colors:

To attach a new color you will pull the new color yarn through as you make your slip stitch to join over your chain 3 space.

Do not fasten off the old color. Leave the strand hanging and still attached to the skein.



For thousands of free patterns, visit our website www.LionBrand.com

To order visit our website www.lionbrand.com or call: (800) 258-YARN (9276) any time!

Copyright ©1998-2021 Lion Brand Yarn Company, all rights reserved. No pattern or other material may be reproduced -- mechanically, electronically, or by any other means, including photocopying - without written permission of Lion Brand Yarn Company.



By not cutting your yarn each time you change colors, you will have less loose ends to weave in. You can easily carry your yarn strand up from the previous row. As you can see in the picture below, the dark blue sapphire yarn was left attached.

Take the yarn strand and pull it up to your hook when you need to join that color back into your project.



For thousands of free patterns, visit our website www.LionBrand.com

To order visit our website www.lionbrand.com or call: (800) 258-YARN (9276) any time!

Copyright ©1998-2021 Lion Brand Yarn Company, all rights reserved. No pattern or other material may be reproduced -- mechanically, electronically, or by any other means, including photocopying - without written permission of Lion Brand Yarn Company.

When you start to have a lot of color changes, it helps to split up your skeins by winding your yarn around multiple bobbins, spools, large clothespins or even chip clips! I used large clothespins and then clipped them to the blanket when not in use so the yarn doesn't get tangled.



How to Decrease:

When you get to the middle of your graph you will stop increasing and begin to decrease your rows. In this case row 42 will be your first decrease row.

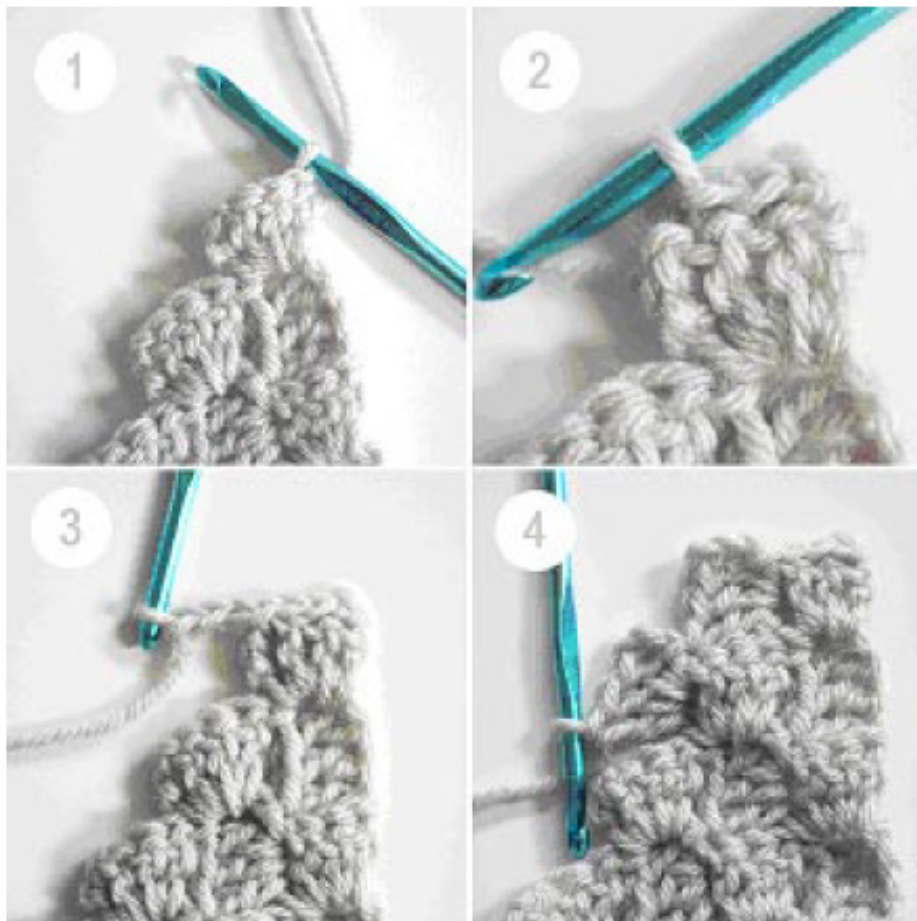
Steps 1 and 2: Slip stitch in the 3 double crochet stitches from last square made.

Step 3: Slip stitch to join to the chain 3 from last square made. Chain 3.

Step 4: Make 3 DC over chain space.

Continue making squares as you have been doing (Slip stitch to join to chain 3 space and chain 3 + 3 DC).

When you get to the end of the row, join, turn and repeat steps 1-4.



For thousands of free patterns, visit our website www.LionBrand.com

To order visit our website www.lionbrand.com or call: (800) 258-YARN (9276) any time!

Copyright ©1998-2021 Lion Brand Yarn Company, all rights reserved. No pattern or other material may be reproduced -- mechanically, electronically, or by any other means, including photocopying - without written permission of Lion Brand Yarn Company.

Border:

Including a border is completely optional, but is a nice finishing touch to your C2C blanket. A simple single crochet border is all you really need! Although you can feel free to crochet any sort of border you would like. The one pictured consists of 4 rounds of single crochets: 2 rounds of linen color, one round in silver blue, and the last round in Aqua.

When you begin your first round of the border you will want to make only 2 single crochets for every square along the edges. Any more and your piece will begin to ripple. In the corners you will want to make a SC + 2 chains + SC all in one space. Continue to do that in the corners for every border round.



ABBREVIATIONS

ch(s) = chain(s)

sl st = slip stitch

dc = double crochet

Every effort has been made to produce accurate and complete instructions. We cannot be responsible for variance of individual knitters or crocheters, human error, or typographical mistakes.

©2021 Lion Brand Yarn Company, all rights reserved.

For thousands of free patterns, visit our website www.LionBrand.com

To order visit our website www.lionbrand.com or call: (800) 258-YARN (9276) any time!

Copyright ©1998-2021 Lion Brand Yarn Company, all rights reserved. No pattern or other material may be reproduced -- mechanically, electronically, or by any other means, including photocopying - without written permission of Lion Brand Yarn Company.