



Free Crochet Pattern
Lion Brand® Scarfie
Free Spirit Crochet Topper
Pattern Number: L50202



Designed by Karen Hay.

Free Crochet Pattern from Lion Brand Yarn

Lion Brand® Scarfie

Free Spirit Crochet Topper

Pattern Number: L50202

SKILL LEVEL: Easy (Level 2)

SIZE: One Size

About 30 x 27 in. (76 x 68.5 cm), after folding and seaming

CORRECTIONS: (applied Mar 24, 2016)

FINISHING

From RS, lay Halves side by side on a flat surface with lower back edges matching. Measure about 23 in. (~~28.5~~ 58.5 cm) up from lower back edge.

MATERIALS

- 826-205 Lion Brand Scarfie: Cranberry/Black
4 Balls
 - Lion Brand Crochet Hook - Size J-10 (6 mm)
 - Lion Brand Split Ring Stitch Markers
 - Lion Brand Large-Eye Blunt Needles (Set of 6)
- *Scarfie (Article #826). 78% acrylic, 22% wool; package size: 5.30oz/150.00 gr. (312yds/285m) pull skeins*



GAUGE:

14 hdc = about 4 in. (10 cm).

When you match the gauge in a pattern, your project will be the size specified in the pattern and the materials specified in the pattern will be sufficient. The needle or hook size called for in the pattern is based on what the designer used, but it is not unusual for gauge to vary from person to person. If it takes you fewer stitches and rows to make your swatch, try using a smaller size hook or needles; if more stitches and rows, try a larger size hook or needles.

Making a Gauge Swatch

NOTES:

1. Topper is made in 2 identical halves.
2. Halves are seamed together at back and sides to make the Topper.
3. Each half begins at lower back edge and is worked up to shoulders then back down to lower front edge.

TOPPER

HALVES (make 2)

Beg at lower back edge, ch 54.

Row 1: Hdc in 3rd ch from hook (2 skipped ch do not count as a st) and in each ch across – you will have 52 hdc at the end of this row.

Row 2: Ch 2 (does not count as a st), turn, hdc in front loop only of first 6 sts, *hdc in back loop of next st, hdc in front loop of next st; rep from * to last 6 sts; hdc in front loop only of last 6 sts.

Rep Row 2 until piece measures about 54 in. (137 cm).

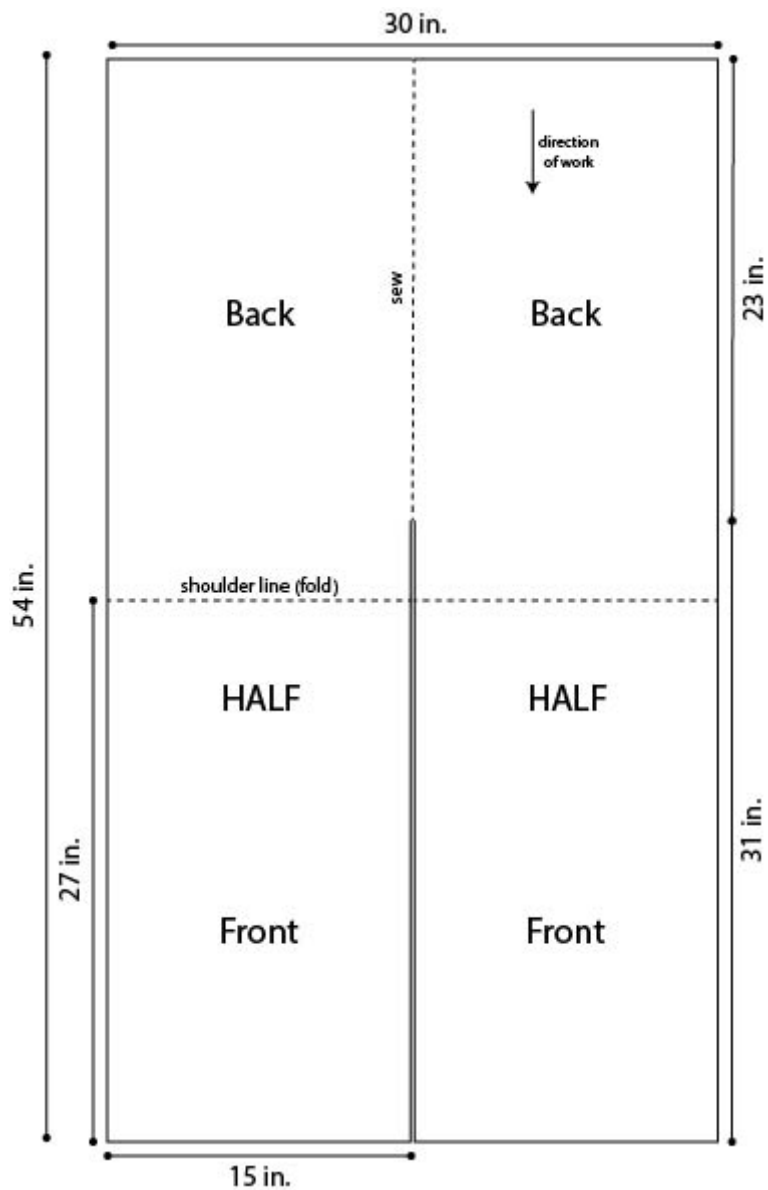
Fasten off.

FINISHING

From RS, lay Halves side by side on a flat surface with lower back edges matching. Measure about 23 in. (58.5 cm) up from lower back edge. Beginning at this point, sew Halves together down to lower back edge. Following diagram, fold piece at shoulder line. Place markers on both side edges about 9 in. (23 cm) below fold and about 8 in. (20.5 cm) above lower edge. Sew side seams between markers and remove markers.

Unsewn edges above side seam are for armholes, unsewn edges below side seams are side slits.

Weave in ends.



ABBREVIATIONS / REFERENCES

Click for explanation and illustration

<u>beg = begin(s)(ning)</u>	<u>ch(s) = chain(s)</u>
<u>hdc = half double crochet</u>	<u>rep = repeat(s)(ing)</u>
<u>st(s) = stitch(es)</u>	

Learn to crochet instructions: <http://www.lionbrand.com/learn/how-to-crochet>

Every effort has been made to have the knitting and crochet instructions accurate and complete. We cannot be responsible for variance of individual knitters and crocheters, human errors, or typographical mistakes.

We want your project to be a success! If you need help with this or any other Lion Brand pattern, e-mail support is available 7 days per week. Just click [here](#) to explain your problem and someone will help you!

For thousands of free patterns, visit our website www.LionBrand.com

To order visit our website www.lionbrand.com or call: (800) 258-YARN (9276) any time!

**When in New York City, visit the Lion Brand Yarn Studio where we have the largest selection of our yarns anywhere and over 100 classes and events monthly.
34 West 15th Street, NY, NY 10011**

Copyright ©1998-2016 Lion Brand Yarn Company, all rights reserved. No pattern or other material may be reproduced -- mechanically, electronically, or by any other means, including photocopying -- without written permission of Lion Brand Yarn Company.