



Free Crochet Pattern
Lion Brand® Vanna's Choice®
Signs of Spring Afghan
Pattern Number: L50179



SKILL LEVEL – Intermediate

SIZE

About 44 x 58 in. (112 x 147.5 cm)

MATERIALS

- Lion Brand® Vanna's Choice® (Art. #860)
 - 098 Fisherman 16 balls
- Lion Brand® crochet hook size J-10 (6 mm)
- Lion Brand® large-eyed blunt needle



GAUGE

11 sc + 11 rows = about 4 in. (10 cm).
BE SURE TO CHECK YOUR GAUGE.

STITCH EXPLANATIONS

BPDC (back post double crochet) Yarn over, insert hook from back to front then to back, going around post of indicated st, draw up a loop, (yarn over and draw through 2 loops on hook) twice. Skip st in front of the BPDC.

Bullion Stitch Thread needle and bring from WS to RS through Afghan. Wrap yarn around needle 6 times, insert needle through to WS close to where it emerged. Tighten knot.

Cord Stitch Tr in front loop of next sc, insert hook in top of tr just made and back loop of same sc, yarn over and draw up a loop, yarn over and draw through all loops on hook.

FPDC (front post double crochet) Yarn over, insert hook from front to back then to front, going around post of indicated st, draw up a loop, (yarn over and draw through 2 loops on hook) twice. Skip st behind the FPDC.

sc2tog (single crochet 2 stitches together) (Insert hook in next st and draw up a loop) twice, yarn over and draw through all 3 loops on hook – 1 st decreased.

PATTERN STITCHES

Flower Stitch (multiple of 15 sts + 11 extra)

Note: Flower st may be worked following a chart or from written instructions.

Row 1 (WS): Ch 1, turn, sc in each st across.

Row 2: Ch 1, turn, sc in first 4 sc, *ch 3, sk next 2 sts, sc in next 13 sts; rep from * to last 7 sts, ch 3, sk next 2 sts, sc in last 5 sts.

Row 3: Ch 1 turn, sc in first 4 sc, ch 3, sk next st, sc in next ch-3 sp, *ch 3, sk next st, sc in next 11 sts, ch 3, sk next st, sc in next ch-3 sp; rep from * to last 4 sts, ch 3, sk next st, sc in last 3 sts.

Row 4: Ch 1, turn, sc in first 2 sc, ch 3, sk next st, sc in next ch-3 sp, sc in next st, sc in next ch-3 sp, *ch 3, sk next st, sc in next 9 sts, ch 3, sk next st, sc in next ch-3 sp, sc in next st, sc in next ch-3 sp; rep from * to last 4 sts, ch 3, sk next st, sc in last 3 sts.

For thousands of free patterns, visit our website www.LionBrand.com

To order visit our website www.lionbrand.com or call: (800) 258-YARN (9276) any time!

Copyright ©1998-2017 Lion Brand Yarn Company, all rights reserved.

No pattern or other material may be reproduced -- mechanically, electronically, or by any other means, including photocopying - without written permission of Lion Brand Yarn Company.

Row 5: Ch 1 turn, sc in first 2 sc, ch 3, sk next st, sc in next ch-3 sp, sc in next 3 sts, sc in next ch-3 sp, *ch 3, sk next st, sc in next 7 sts, ch 3, sk next st, sc in next ch-3 sp, sc in next 3 sts, sc in next ch-3 sp; rep from * to last 2 sts, ch 3, sk next st, sc in last st.

Row 6: Ch 1, turn, sc in first sc, sc in next ch-3 sp, ch 3, sk next st, sc in next 3 sts, ch 3, sk next st, sc in next ch-3 sp, *sc in next 7 sts, sc in next ch-3 sp, ch 3, sk next st, sc in next 3 sts, ch 3, sk next st, sc in next ch-3 sp; rep from * to last 2 sts, sc in last 2 sts.

Row 7: Ch 1 turn, sc in first 3 sc, sc in next ch-3 sp, ch 3, sk next st, sc in next st, ch 3, sk next st, sc in next ch-3 sp, *sc in next 9 sts, sc in next ch-3 sp, ch 3, sk next st, sc in next st, ch 3, sk next st, sc in next ch-3 sp; rep from * to last 2 sts, sc in last 2 sts.

Row 8: Ch 1, turn, sc in first 3 sc, sc in next ch-3 sp, ch 3, sk next st, sc in next ch-3 sp, *sc in next 11 sts, sc in next ch-3 sp, ch 3, sk next st, sc in next ch-3 sp; rep from * to last 4 sts, sc in last 4 sts.

Row 9: Ch 1, turn, sc in each sc and 2 sc in each ch-3 sp across.

Work Rows 1-9 for Flower st.

NOTES

1. Afghan is worked in one piece from lower edge to top edge. Side borders are worked along long sides of Afghan. Edging is worked in the round around outside edge of Afghan. Leaves are worked separately and sewn on, bird beaks are embroidered.
2. Bird section of Afghan is worked by following a chart. When working from chart, work RS rows from right to left and WS rows from left to right.
3. When you see "- 12 sts" in the instructions, this lets you know how many sts you will have at the end of that specific row.

AFGHAN

Ch 118.

Row 1 (RS): Dc in 4th ch from hook and each ch across – 116 dc.

Row 2: Ch 3 (counts as a dc on this row and on all the rows of this pattern), turn, *BPDC around next st, dc in next st; rep from * to last st, dc in last st.

Row 3: Ch 3, turn, *dc in next dc, FPDC around next BPDC; rep from * to last st, dc in last st.

First Flower Stitch Section

Beg with Row 1, work in Flower st until Row 9 has been completed.

First Ripple Stitch Section

Rows 1-7: Ch 1, turn, sc2tog, sc in next 3 sts, 3 sc in next st, *sc in next 6 sts, sk next 2 sts, sc in next 6 sts, 3 sc in next st; rep from * to last 5 sts, sc in next 3 sts, sc2tog – 8 ripples.

For thousands of free patterns, visit our website www.LionBrand.com

To order visit our website www.lionbrand.com or call: (800) 258-YARN (9276) any time!

Copyright ©1998-2017 Lion Brand Yarn Company, all rights reserved.

No pattern or other material may be reproduced -- mechanically, electronically, or by any other means, including photocopying - without written permission of Lion Brand Yarn Company.

Second Flower Stitch Section

Row 1 (WS): Ch 1, turn, sc in first 7 sts, work Row 1, work in Flower st to last 8 sts, sc in last 8 sts.

Row 2: Ch 1, turn, sc in first 8 sts, work Row 2 of Flower st to last 7 sts, sc in last 7 sts.

Continue in Flower st as established until Row 9 has been completed.

Next 2 Rows: Ch 1, turn, sc in each sc across.

Next Row (RS): Ch 3, turn, dc in each st across.

Next Row: Ch 3, turn, *BPDC around next st, dc in next st; rep from * to last st, dc in last st.

Next Row: Ch 3, turn, *dc in next dc, FPDC around next BPDC; rep from * to last st, dc in last st.

Next 3 Rows: Ch 1, turn, sc in each st across.

Next Row (RS): Ch 1, turn, sc in first st, Cord st in each st to last st, sc in last st.

Next Row: Ch 1, turn, sc in each st across – 116 sc.

Bird Section

Note: When working chart, push all trs to RS if necessary when finished.

Beg with Row 1, work Rows 1-54 of Bird Chart.

Next Row (RS): Ch 1, turn, sc in first st, Cord st in each st to last st, sc in last st.

Next 17 Rows: Ch 1, turn, sc in each st across.

Next Row (RS): Ch 1, turn, sc in first st, Cord st in each st to last st, sc in last st.

Next 3 Rows: Ch 1, turn, sc in each st across.

Next Row (RS): Ch 3, turn, dc in each st across.

Next Row: Ch 3, turn, *BPDC around next st, dc in next st; rep from * to last st, dc in last st.

Next Row: Ch 3, turn, *dc in next dc, FPDC around next BPDC; rep from * to last st, dc in last st.

Third Flower Stitch Section

Work same as Second Flower Stitch Section.

Second Ripple Stitch Section

Row 1 (RS): Ch 1, turn, 2 sc in first st, sc in next 3 sts, *sk next 2 sts, sc in next 6 sts, 3 sc in next st, sc in next 6 sts; rep from * to last 7 sts, sk next 2 sts, sc in next 4 sts, 2 sc in last st – 8 ripples.

Row 2: Ch 1, turn, 2 sc in first st, sc in next 4 sts, *sk next 2 sts, sc in next 6 sts, 3 sc in next st, sc in next 6 sts; rep from * to last 6 sts, sk next 2 sts, sc in next 3 sts, 2 sc in last st.

Rows 3-6: Rep Rows 1 and 2 twice.

Row 7: Rep Row 1.

Fourth Flower Stitch Section

Beg with Row 1, work in Flower st until Row 9 has been completed.

For thousands of free patterns, visit our website www.LionBrand.com

To order visit our website www.lionbrand.com or call: (800) 258-YARN (9276) any time!

Copyright ©1998-2017 Lion Brand Yarn Company, all rights reserved.

No pattern or other material may be reproduced -- mechanically, electronically, or by any other means, including photocopying - without written permission of Lion Brand Yarn Company.

Next Row (RS): Ch 3, turn, dc in each st across.

Next Row: Ch 3, turn, *BPDC around next st, dc in next st; rep from * to last st, dc in last st.

Next Row: Ch 3, turn, *dc in next dc, FPDC around next BPDC; rep from * to last st, dc in last st.

Last Row: Ch 1, turn, sc in each st across.

Fasten off.

FINISHING

Side Borders

Next Row: From WS, join yarn with sl st in any corner, ready to work along one long edge of Afghan, ch 3, work 177 more dc evenly spaced along long side edge.

Next Row: Ch 3, turn, *dc in next dc, FPDC around next dc; rep from * to last st, dc in last st.

Fasten off.

Rep to work border along opposite long side of Afghan.

Edging

Rnd 1: From RS, join yarn with sc in any st along edge of Afghan, work sc evenly spaced around entire outside edge of Afghan; join with sl st in first sc.

Rnd 2: Ch 1, do NOT turn, sc in same st as joining, *ch 1, sk next st, sc in next st; rep from * to last st, ch 1, sk next sc; join with sl st in first sc.

Fasten off.

LEAVES (make 20)

Ch 10.

Rnd 1: sc in 2nd ch from hook and next ch, hdc in next 2 ch, dc in next 2 ch, tr in next ch, hdc in next ch, sl st in last ch, rotate piece to work along opposite side of foundation ch, sk last ch, hdc in next ch, tr in next ch, dc in next 2 ch, hdc in next 2 ch, sc in next 2 ch, sl st in first ch.

Rnd 2: Sl st in each st around.

Fasten off.

Following photo, sew Leaves to Afghan.

Following Bird Chart, embroider a Bullion st beak on each bird.

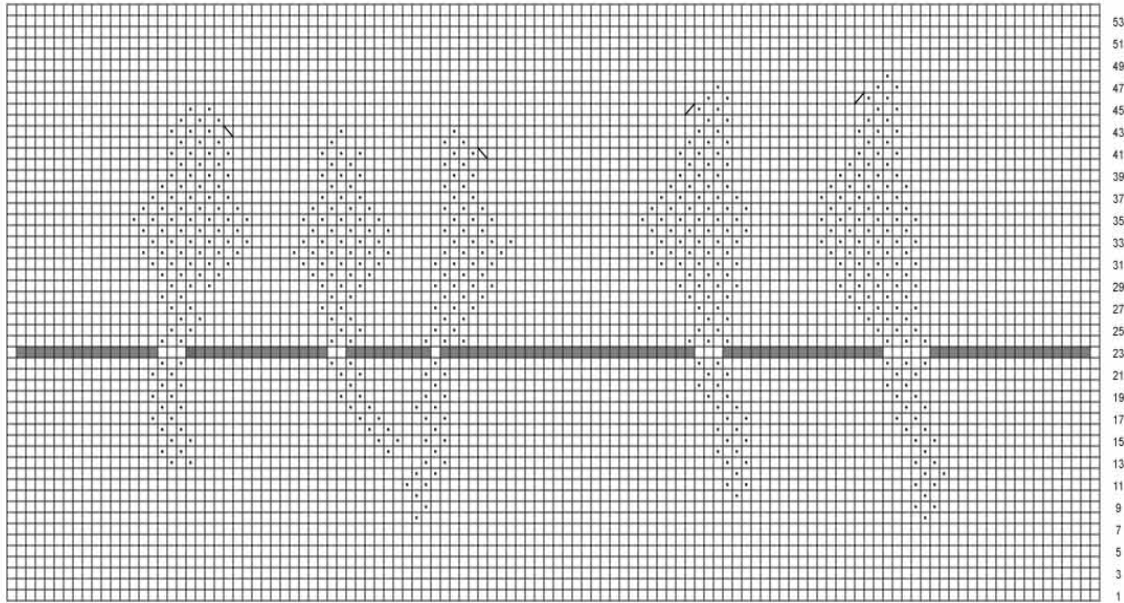
Weave in ends.

ABBREVIATIONS

beg = begin(ning)
ch = chain
ch-sp(s) = chain space(s) previously made
dc = double crochet
hdc = half double crochet
rep = repeat
rnd = round
RS = right side
sc = single crochet
sk = skip
sl = slip
sl st = slip stitch
st(s) = stitch(es)
tr = treble (triple) crochet
WS = wrong side

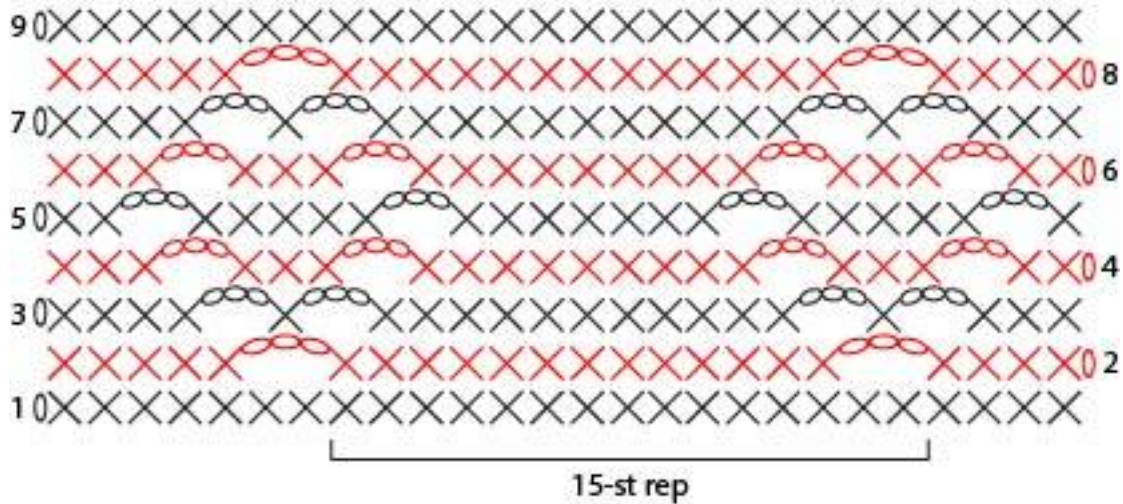
Every effort has been made to produce accurate and complete instructions. We cannot be responsible for variance of individual crafters, human error, or typographical mistakes.

- Stitch Key
- = single crochet (sc)
 - ▣ = treble crochet (tr)
 - = Cord st
 - ∖ = Bullion st



116 Stitches

Flower Stitch



- | KEY | |
|-----|-----------------------|
| ○ | = chain (ch) |
| × | = single crochet (sc) |