



**Free Knitting Pattern**  
**Lion Brand® Color Clouds**  
**Winter Park Pullover**  
Pattern Number: L50195



*Designed by Irina Poludnenko.*

[Click here to see a video of the Winter Park Pullover!](#)



# Free Knitting Pattern from Lion Brand Yarn

## Lion Brand® Color Clouds

### Winter Park Pullover

Pattern Number: L50195

**SKILL LEVEL:** Easy + (Level 3)

**SIZE:** XS/S, M/L

**Finished Bust** 44 (50) in. (112 (127) cm)

**Finished Length** 21 1/2 (23) in. (54.5 (58.5) cm), not including collar

**Note:** Pattern is written for smallest size with changes for larger sizes in parentheses. When only one number is given, it applies to all sizes. To follow pattern more easily, circle all numbers pertaining to your size before beginning.

**CORRECTIONS:** (applied Jan 8, 2017)

#### Step 2: Collar

**Rnds 5 6-10:** \*K1, p1; rep from \* around.

#### MATERIALS

- 546-150 Lion Brand Color Clouds: Smoky Grey  
9 11 Balls (A)
- 546-205 Lion Brand Color Clouds: Ice Storm  
1 2 Ball (B)
- Lion Brand Size 17 [13 mm] 29-inch [75 cm] Circular Knitting Needles
- Lion Brand Split Ring Stitch Markers
- Lion Brand Large-Eye Blunt Needles (Set of 6)
- Additional Materials  
Circular knitting needle size 17 (13 mm), 16 in. (40.5 cm) long

*\*Color Clouds (Article #546). 100% Acrylic; package size: 3.50oz/100.00 gr. (55yds/50m) pull skeins*



#### GAUGE:

7 1/2 sts + 12 rows = about 4 in. (10 cm) in Seed st.

When you match the gauge in a pattern, your project will be the size specified in the pattern and the materials specified in the pattern will be sufficient. The needle or hook size called for in the pattern is based on what the designer used, but it is not unusual for gauge to vary from person to person. If it takes you fewer stitches and rows to make your swatch, try using a smaller size hook or needles; if more stitches and rows, try a larger size hook or needles.

Making a Gauge Swatch

#### STITCH EXPLANATION:

**kfb (knit in front and back)** Knit next st without removing it from left needle, then k through back of same st – 1 st increased.

**ssk (slip, slip, knit)** Slip next 2 sts as if to knit, one at a time, to right needle; insert left needle into fronts of these 2 sts and knit them tog – 1 st decreased.

### PATTERN STITCHES

**K1, p1 Rib (worked over an odd number of sts)**

**Row 1 (RS):** K1, \*p1, k1; rep from \* to end of row.

**Row 2:** K the knit sts and p the purl sts.

Rep Row 2 for K1, p1 Rib.

**Seed St (worked over an odd number of sts)**

**Row 1 (RS):** \*K1, p1; rep from \* to last st, k1.

**Row 2:** K the purl sts and p the knit sts.

Rep Row 2 for Seed st.

### NOTES:

1. Pullover is worked in 4 pieces: Front, Back and 2 Sleeves.
2. Pieces are worked back and forth in rows on a circular needle to accommodate the bulky yarn in Seed st and rib.
3. Collar is worked in the round from stitches picked up around the neck edge.
4. You may find it easier to use a thinner yarn to sew the Pullover together.
5. This pattern includes some knitter's lingo. When you see '- 12 sts' at the end of a sentence, this is the number of sts you will have after working that row. When you see 'as established' in the instructions, this means to continue in the indicated pattern st, lining up sts as in previous rows.
6. Our pattern includes diagrams to help you visualize how the Pullover is made and put together. Take the time to review the diagrams before you start knitting. The Pullover is easy to make, but having the big picture will make it even easier!

### BACK

With longer circular needle and A, cast on 41 (47) sts. Working back and forth in rows on circular needle as if working with straight needles, work in Seed st until piece measures about 17 (18) in. (43 (45.5) cm) from beg, end with a WS row as the last row you work.

#### Shape Neck and Shoulders

**Row 1 (RS):** Work in Seed st as established over first 14 (16) sts, join a 2nd ball of A and bind off center 13 (15) sts for neck, work in Seed st as established to end of row – 14 (16) sts on each side of neck for shoulders.

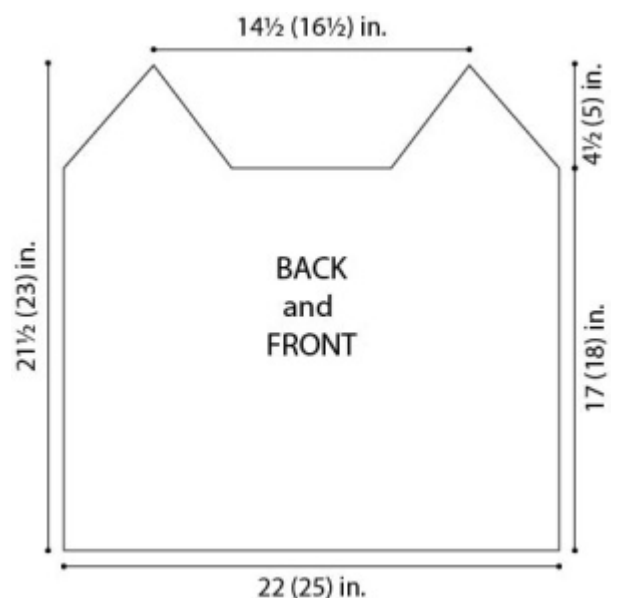
You will now work both sides AT THE SAME TIME using separate balls of yarn.

**Row 2:** Work in Seed st as established across both sides.

**Row 3 (Decrease Row – RS):** On first side, ssk, work in Seed st to last 2 sts of side, k2tog; on second side, ssk, work in Seed st to last 2 sts of side, k2tog – 12 (14) sts for each shoulder.

Rep Rows 2 and 3 until only 1 st remains on each side.

Fasten off last st on each side.



### FRONT

Work same as Back.

### SLEEVES (make 2)

With longer circular needle and B, cast on 23 (25) sts. Working back and forth in rows on circular needle, work in K1, p1 Rib until piece measures about 4 in. (10 cm) from beg, end with a RS row as the last row you work.

#### Shape Sleeve

Change to A.

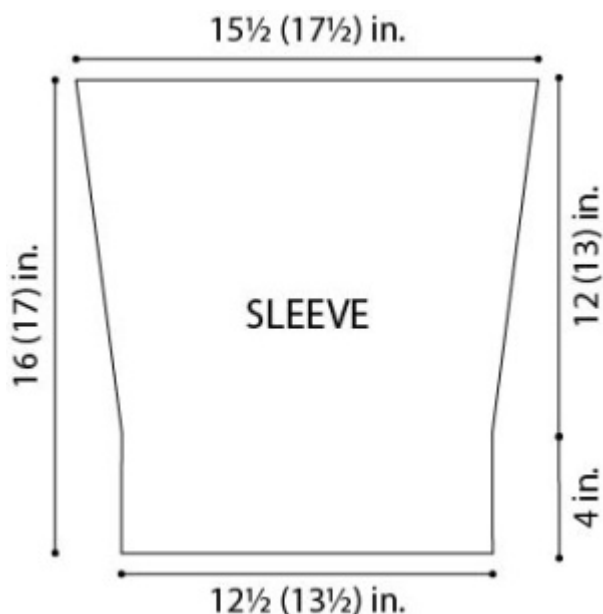
Work in Seed st for 7 rows.

**Increase Row (RS):** K1, kfb, work in Seed st to last 2 sts, kfb, k last st – 23 (27) sts.

Rep last 8 rows 2 (3) times – 29 (33) sts.

Work in Seed st until piece measures about 16 (17) in. (40.5 (43) cm) from beg.

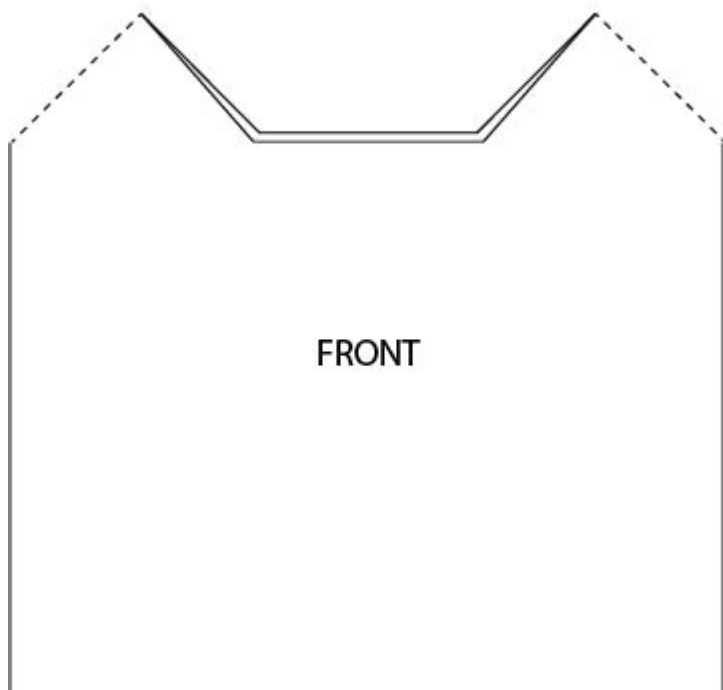
Bind off.



### FINISHING

**Step 1:** Sew Front to Back at shoulders.

#### STEP 1



#### Step 2: Collar

From RS with shorter circular needle and B, pick up and k78 (87) sts as evenly spaced as possible around neck edge. Place marker for beg of rnd and join by working the first st on the left hand needle with working yarn from the right hand needle.

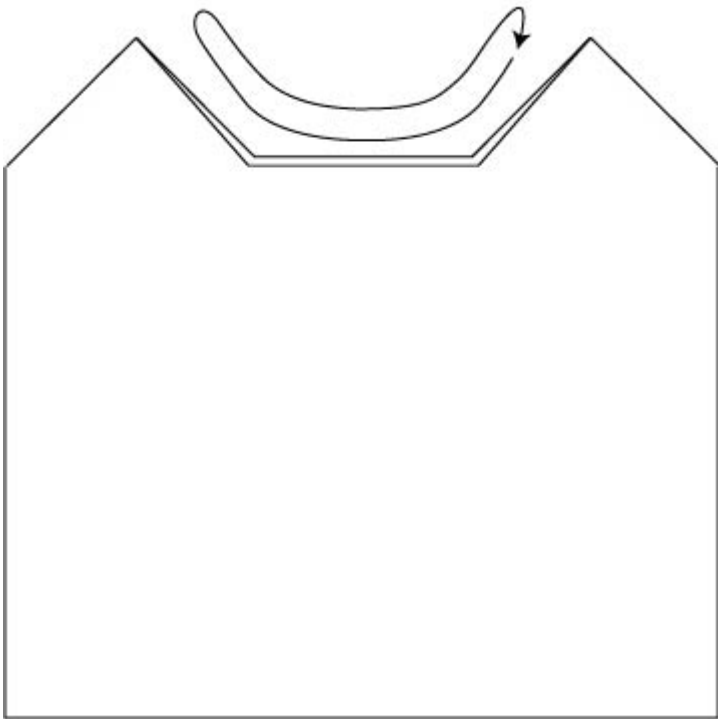
**Rnds 1-3:** \*K1, p2; rep from \* around.

**Rnd 4:** \*K1, p2tog; rep from \* around – 52 (58) sts remain.

**Rnds 5-10:** \*K1, p1; rep from \* around.

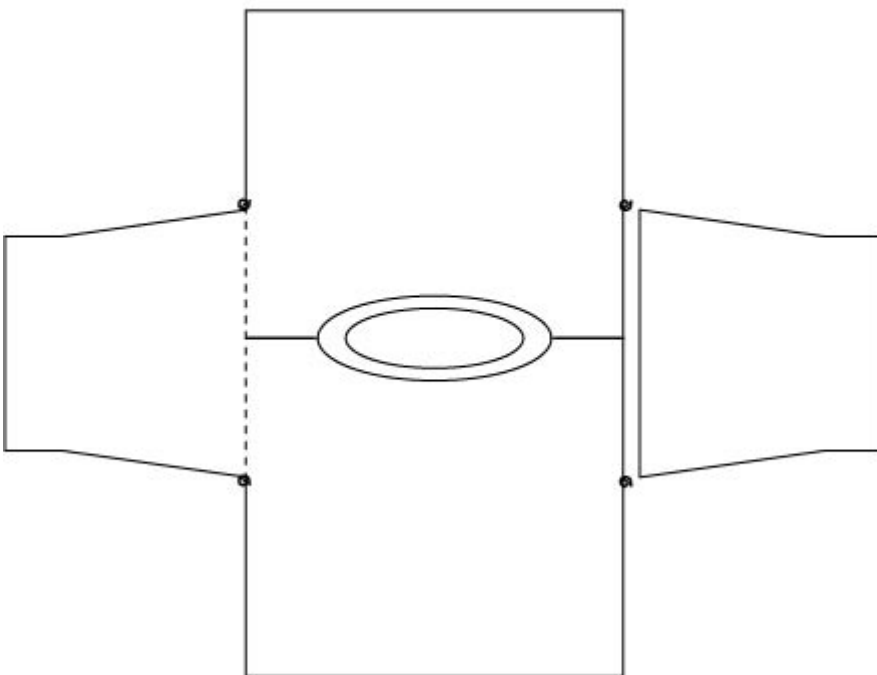
Bind off.

### STEP 2



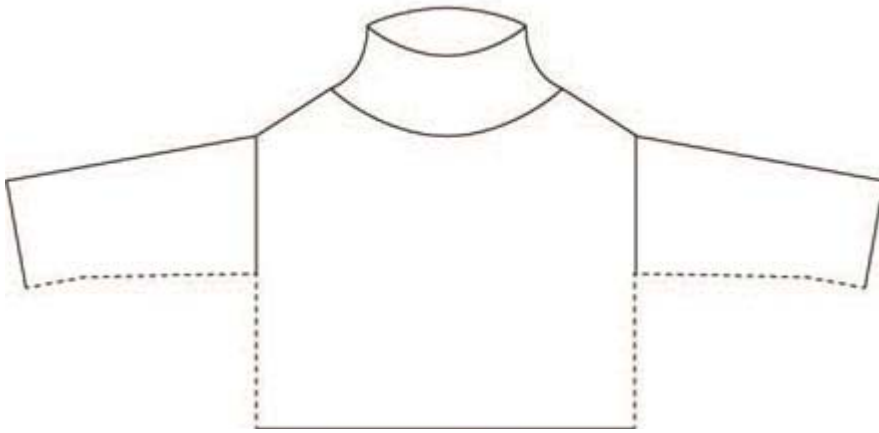
**Step 3:** Place markers on side edges of Front and Back about 8 (9) in. (20.5 (23 cm) below shoulder seams. Matching the center of the top of each Sleeve to the shoulder seam of Pullover, sew Sleeves to Pullover between markers.

### STEP 3



**Step 4:** Sew side and Sleeve seams. Weave in ends.

STEP 4



**ABBREVIATIONS / REFERENCES**

Click for explanation and illustration

<u>beg = begin(s)(ning)</u>	<u>k = knit</u>
<u>k2tog = knit 2 together</u>	<u>p = purl</u>
<u>rep = repeat(s)(ing)</u>	<u>rnd(s) = round(s)</u>
<u>RS = right side</u>	<u>st(s) = stitch(es)</u>

Learn to knit instructions: <http://www.lionbrand.com/learn/how-to-knit>

Every effort has been made to have the knitting and crochet instructions accurate and complete. We cannot be responsible for variance of individual knitters and crocheters, human errors, or typographical mistakes.

We want your project to be a success! If you need help with this or any other Lion Brand pattern, e-mail support is available 7 days per week. Just click [here](#) to explain your problem and someone will help you!

**For thousands of free patterns, visit our website [www.LionBrand.com](http://www.LionBrand.com)**

**To order visit our website [www.lionbrand.com](http://www.lionbrand.com) or call: (800) 258-YARN (9276) any time!**

**When in New York City, visit the Lion Brand Yarn Studio where we have the largest selection of our yarns anywhere and over 100 classes and events monthly.**

**34 West 15th Street, NY, NY 10011**

Copyright ©1998-2017 Lion Brand Yarn Company, all rights reserved. No pattern or other material may be reproduced -- mechanically, electronically, or by any other means, including photocopying -- without written permission of Lion Brand Yarn Company.