



Free Crochet Pattern

**LION BRAND® SHAWL IN A BALL
BURNHAM MARKET SHAWL**

Pattern Number: L50253 SB



SKILL LEVEL – EASY

FINISHED SIZES

About 16 x 62 in. (40.5 x 157.5 cm)

MATERIALS

- LION BRAND® SHAWL IN A BALL (ART. #828)
#203 MINDFUL MAUVE 1 BALL
OR COLOR OF YOUR CHOICE
- LION BRAND® CROCHET HOOK SIZE H-8 (5 MM)
- LION BRAND® LARGE-EYED BLUNT NEEDLE



GAUGE

2 pattern reps = about 3 in. (7.5 cm).

Note: One pattern rep consists of a tr2tog-over-4ch and the following ch 4 and tr.

BE SURE TO CHECK YOUR GAUGE.

STITCH EXPLANATIONS

tr2tog-over-2ch (tr 2 together – worked over 2 ch) (Yarn over) twice, insert hook in next st or ch and draw up a loop (for first leg of tr2tog), (yarn over and draw through 2 loops) twice. (Yarn over) twice, sk next 2 ch, insert hook in next st or ch and draw up a loop (for 2nd leg of tr2tog), (yarn over, draw through 2 loops) twice, yarn over and draw through all 3 loops on hook – 1 st decreased.

tr2tog-over-4ch (tr 2 together – worked over 4 ch) (Yarn over) twice, insert hook in next st or ch and draw up a loop (for first leg of tr2tog), (yarn over and draw through 2 loops) twice. (Yarn over) twice, sk next 4 ch, insert hook in next st or ch and draw up a loop (for 2nd leg of tr2tog), (yarn over, draw through 2 loops) twice, yarn over and draw through all 3 loops on hook – 1 st decreased.

NOTES

1. Shawl is worked in one piece.
2. The pattern stitch used on this Shawl is easy to do! For those who find a visual helpful, we've included a diagram.

SHAWL

Ch 65.

Row 1 (RS): (Tr, ch 4, tr) in 7th ch from hook, *tr2tog-over-4ch, ch 4, tr in same ch as 2nd leg of tr2tog just made; rep from * to last 4 ch, tr2tog-over-2ch – 10 pattern reps.

Row 2: Ch 6, turn, tr in first st, *tr2tog-over-4ch, ch 4, tr in same st as 2nd leg of tr2tog just made; rep from * to last (tr, ch 4, tr), tr2tog-over-4ch, ch 2, tr in same st as 2nd leg of tr2tog just made.

Row 3: Ch 4, turn, sk first ch-2 sp, (tr, ch 4, tr) in next st, * tr2tog-over-4ch, ch 4, tr in same st as 2nd leg of tr2tog just made; rep from * to last tr and beg ch-sp, tr2tog-over-2ch.

Rep Rows 2 and 3 until there is not enough yarn remaining to work another complete row.

Fasten off.

FINISHING

Blocking

Dampen Shawl thoroughly. Spread a towel onto a flat surface, then lay Shawl onto towel and smooth into shape. Gently shape Shawl to match finished measurements. Use blocking wires if desired to further shape Shawl. Allow to air dry.

Weave in ends.

ABBREVIATIONS

beg = begin(ning)(s)

ch(s) = chain(s)

ch-sp = chain space previously made

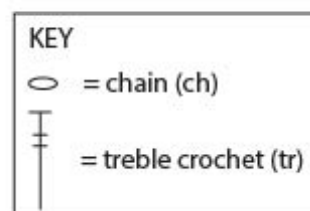
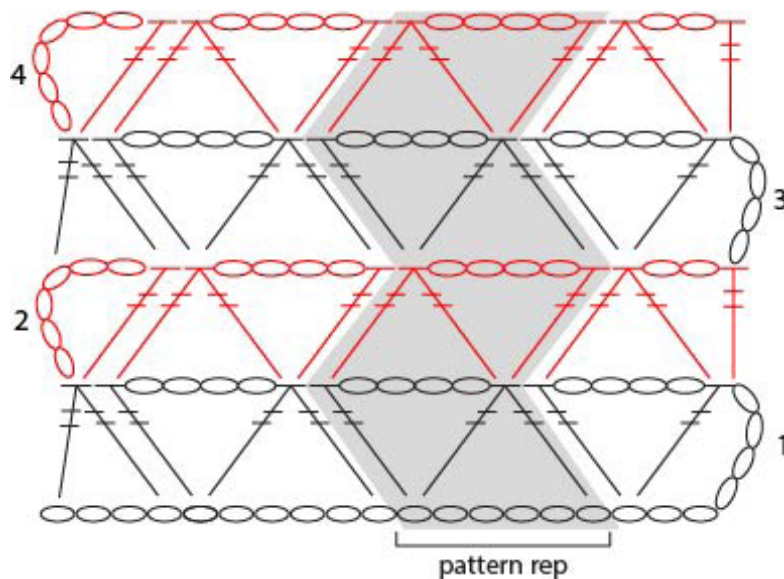
rep(s) = repeat(s)

sk = skip

st(s) = stitch(es)

tr = treble (triple) crochet

Every effort has been made to produce accurate and complete instructions. We cannot be responsible for variance of individual knitters or crocheters, human error, or typographical mistakes.



For thousands of free patterns, visit our website www.LionBrand.com

To order visit our website www.lionbrand.com or call: (800) 258-YARN (9276) any time!

Copyright ©1998-2020 Lion Brand Yarn Company, all rights reserved. No pattern or other material may be reproduced -- mechanically, electronically, or by any other means, including photocopying - without written permission of Lion Brand Yarn Company.