



Free Knitting Pattern
Lion Brand® Wool-Ease® Thick & Quick® - Homespun® Thick & Quick®
Cozy Collared Pullover
Pattern Number: L50322



Designed by Vladimir Teriokhin.

Free Knitting Pattern from Lion Brand Yarn

Lion Brand® Wool-Ease® Thick & Quick® - Homespun® Thick & Quick®

Cozy Collared Pullover

Pattern Number: L50322

SKILL LEVEL: [Easy \(Level 2\)](#)

SIZE: XS/S, Large

Finished Bust About 52 (62) in. (132 (157.5) cm)

Finished Length About 23 1/2 (24 1/2) in. (59.5 (62) cm)

Note: Pattern is written for smallest size with changes for larger sizes in parentheses. When only one number is given, it applies to all sizes. To follow pattern more easily, circle all numbers pertaining to your size before beginning.

CORRECTIONS: None as of Jul 12, 2016. To check for later updates, click [here](#).

MATERIALS

- 640-099 [Lion Brand Wool-Ease Thick & Quick Yarn: Fisherman](#)
5 7 Balls (A)

- 792-412 [Lion Brand Homespun Thick & Quick Yarn: Pearls](#)
2 3 Balls (B)

- [Boye Aluminum Circular Knitting Needles 36 inches Size 13](#)

- [Boye Aluminum Circular Knitting Needles 36 inches Size 15](#)

- [Lion Brand Split Ring Stitch Markers](#)

- [Lion Brand Large-Eye Blunt Needles \(Set of 6\)](#)

- Additional Materials
Circular knitting needle size 13 (9 mm), 16 in. (40.5 cm) long
Circular knitting needle size 13 (9 mm), 24 in. (61 cm) long

**Wool-Ease Thick & Quick (Article #640). Solids, Heathers, Twists, Prints, Stripes: 80% Acrylic, 20% Wool; Wheat & Wood: 86% Acrylic; 10% Wool; 4% Rayon; Oatmeal & Barley & Grey Marble: 82% Acrylic; 10% Wool; 8% Rayon; Metallics: 79% Acrylic, 20% Wool, 1% Metallic Poly; package size: Solids, Heathers, Twists, Tweeds: 6 oz./170g (106 yd/97 m) Prints, Stripes: 5 oz./140g (87 yd/80 m) Metallics: 5 oz./140g (92 yd/84 m)*

**Homespun Thick & Quick (Article #792). 88% Acrylic, 12% Polyester; package size: 8.00oz/227.00 gr. (160yds/146m) pull skeins*



GAUGE:

8 sts + 16 rows = about 4 in. (10 cm) in Ridge st with larger needle with A and B.

When you match the gauge in a pattern, your project will be the size specified in the pattern and the materials specified in the pattern will be sufficient. The needle or hook size called for in the pattern is based on what the designer used, but it is not unusual for gauge to vary from person to person. If it takes you fewer stitches and rows to make your swatch, try using a smaller size hook or needles; if more stitches and rows, try a larger size hook or needles.

[Making a Gauge Swatch](#)

STITCH EXPLANATION:

kfb (knit in front and back) Knit next st without removing it from the left hand needle, then k through back of same st – 1 st increased.

pfb (purl in front and back) Purl next st without removing it from the left hand needle, then p through back of same st – 1 st increased.

PATTERN STITCHES

K2, p2 Rib (worked over a multiple of 4 sts + 2 additional sts)

Row 1 (WS): K2, *p2, k2; rep from * to end of row.

Row 2: K the knit sts and p the purl sts.

Rep Row 2 for K2, p2 Rib.

Ridge Stitch

Row 1 (RS): With B, knit.
Row 2: With B, purl.
Rows 3 and 4: With A, knit.
 Rep Rows 1-4 for Ridge st.

NOTES:

1. Pullover is worked in 4 pieces: Front, Back and 2 Sleeves.
2. A circular needle is used to accommodate the large number of sts. Work back and forth on the circular needle as if working on straight needles.
3. Collar is worked in the round on circular needle from sts picked up around neck edge.
4. End with a WS row means that the last row you work should be a WS row, and the next row that you are ready to work will be a RS row.
5. When you see '- 12 sts' in the instructions, this lets you know how many sts you will have at the end of that specific row.

BACK

With longest size 13 (9 mm) needle and A, cast on 62 (74) sts.
 Beg with a Row 1, work in K2, p2 rib until piece measures about 7 in. (18 cm) from beg, end with a RS row as the last row you work.

Dec Row (WS): (K2, p2tog, k2, p2, k2tog, p2) 5 (6) times, k2 – you will have 52 (62) sts at the end of this row.

Change to largest circular needle and B, and beg with Row 1, work in Ridge st until piece measures about 22 (23) in. (56 (58.5) cm) from beg, end with a WS row as the last row you work.

Shape Shoulders

Continuing in Ridge st, bind off 2 (4) sts at beg of next 2 rows, 3 (4) sts at beg of next 6 rows, then 4 sts at beg of next 4 rows.

Bind off rem 14 sts for back neck.

FRONT

Cast on and work same as for Back until piece measures about 20 1/2 (21 1/2) in. (52 (54.5) cm) from beg, end with a WS row as the last row you work.

Shape Neck

Mark center 4 sts.

Next Row (RS): Continuing in Ridge st, work to marked sts, join a second ball of yarn and bind off marked center 4 sts, work to end of row – 24 (29) sts rem on each side.

You will now be working both sides AT THE SAME TIME using separate balls of yarn.

Next 2 Rows: Continuing in Ridge st, on first side, work to end of side; on second side, bind off 2 sts, work to end of side.

Next 6 Rows: Continuing in Ridge st, on first side, work to end of side; on second side, bind off 1 st, work to end of side – 19 (24) sts on each side when all bind offs have been completed.

Continuing in Ridge st, work both sides AT THE SAME TIME with separate balls of yarn until piece measures same as Back to shoulders.

Shape Shoulders

Continue in Ridge st as you work the following rows.

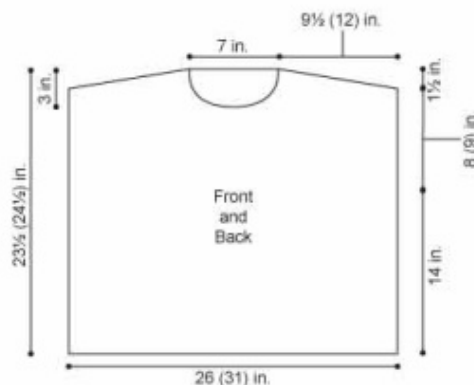
Next 2 Rows: On first side, bind off 2 (4) sts, work to end of side; on second side, work to end of side – 17 (20) sts on each side.

Next 6 Rows: On first side, bind off 3 (4) sts, work to end of side; on second side, work to end of side – 8 sts on each side.

Next 2 Rows: On first side, bind off 4 sts, work to end of side; on second side, work to end of side – 4 sts on each side.

Next Row: On first side, bind off rem 4 sts; on second side, work to end of row.

Bind off rem 4 sts.



SLEEVES (make 2)

With largest circular needle and B, cast on 26 (28) sts.

Knit 10 rows.

Change to A and beg with a RS (knit) row, work in St st (K on RS, p on WS) for 4 rows.

Inc Row (RS): K1, kfb, k to last 2 sts, kfb, k1 – you will have 28 (30) sts at the end of this row.

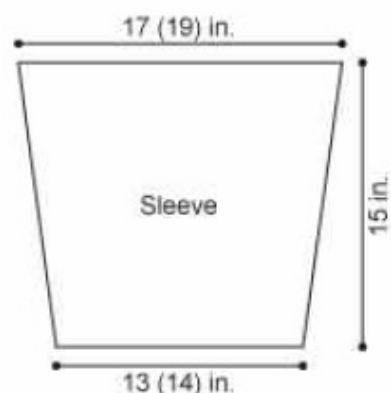
Continue in St st for 5 rows.

Rep last 6 rows 3 (4) more times – 34 (38) sts when all increases have been completed.

Continue in St st until piece measures about 13 in. (33 cm) from beg, end with a WS row as the last row you work.

Change to B and knit 10 rows.

Bind off.



FINISHING

Sew Back to Front at shoulders.

Place markers on Front and Back 8 (9) in. (20.5 (23) cm) down from shoulder seams.

Sew Sleeves between markers. Sew side and Sleeve seams.

Collar

From RS with shortest size 13 (9 mm) circular needle and A, and beginning at one shoulder seam, pick up and k34 sts evenly spaced around neck edge. Place a marker for beg of rnd. Join by working the first st on the left hand needle with the working yarn from the right hand needle.

Rnd 1 (RS): (K1, p1) around.

Rep Rnd 1 for 5 more rnds.

Change to medium length size 13 (9 mm) circular needle as you work the next rnd.

Inc Rnd: (Kfb, pfb) around – 68 sts.

Next Rnd: (K2, p2) around.

Rep last rnd until collar measures about 14 in. (35.5 cm).

Bind off in k2, p2 pattern.

Weave in ends.

ABBREVIATIONS / REFERENCES

Click for explanation and illustration

beg = begin(s)(ning)	dec = decreas(e)(s)(ing)
inc = increas(e)(s)(ing)	k = knit
p = purl	rem = remain(s)(ing)
rep = repeat(s)(ing)	rnd(s) = round(s)
RS = right side	St st = Stockinette stitch
st(s) = stitch(es)	tog = together
WS = wrong side	

Learn to knit instructions: <http://www.lionbrand.com/learn/how-to-knit>

Every effort has been made to have the knitting and crochet instructions accurate and complete. We cannot be responsible for variance of individual knitters and crocheters, human errors, or typographical mistakes.

We want your project to be a success! If you need help with this or any other Lion Brand pattern, e-mail support is available 7 days per week. Just click [here](#) to explain your problem and someone will help you!

**For thousands of free patterns, visit our website www.LionBrand.com
To order visit our website www.lionbrand.com or call: (800) 258-YARN (9276) any time!**

**When in New York City, visit the Lion Brand Yarn Studio where we have the largest selection of our yarns
anywhere and over 100 classes and events monthly.
34 West 15th Street, NY, NY 10011**

Copyright ©1998-2016 Lion Brand Yarn Company, all rights reserved. No pattern or other material may be reproduced -- mechanically, electronically, or by any other means, including photocopying -- without written permission of Lion Brand Yarn Company.