



Free Crochet Pattern
Lion Brand® Vanna's Choice®
Eddie's Crochet Hat
Pattern Number: L60028



Designed by Miwa Gemini.

Free Crochet Pattern from Lion Brand Yarn

Lion Brand® Vanna's Choice®

Eddie's Crochet Hat

Pattern Number: L60028

SKILL LEVEL: Easy (Level 2)

SIZE: One Size

Finished Circumference About 20 in. (51 cm), will stretch to fit a range of sizes

Finished Height About 8 1/2 in. (21.5 cm)

CORRECTIONS: None as of Feb 25, 2016. To check for later updates, click [here](#).

MATERIALS

- 860-100 Lion Brand Vanna's Choice Yarn:
White

1 Ball (A)

- 860-113 Lion Brand Vanna's Choice Yarn:
Scarlet

1 Ball (B)

- Lion Brand Crochet Hook
- Size J-10 (6 mm)

- Lion Brand Large-Eye
Blunt Needles (Set of 6)

**Vanna's Choice® (Article #860). 100% Premium Acrylic*

400, 401, 403: 92% Acrylic, 8% Rayon
402: 96% Acrylic, 4% Rayon; package size: **Solids:** 3.5 oz (100 g), 170 yards (156 m)

Prints, Tweeds, & Heathers: 3 ozs (85 g), 145 yards (133 meters)

Twists: 2.5 oz (70 g), 121 yards (111 meters)



GAUGE:

11 sc = about 4 in. (10 cm).

When you match the gauge in a pattern, your project will be the size specified in the pattern and the materials specified in the pattern will be sufficient. The needle or hook size called for in the pattern is based on what the designer used, but it is not unusual for gauge to vary from person to person. If it takes you fewer stitches and rows to make your swatch, try using a smaller size hook or needles; if more stitches and rows, try a larger size hook or needles.

Making a Gauge Swatch

NOTES:

1. Ribbing is worked first, back and forth in rows, then stitches are worked across one long edge of ribbing for Hat. Hat is worked in joined rnds.
2. The letter "E" is embroidered in cross stitch with B following a chart.

HAT

Ribbing

With A, ch 9.

Row 1: Sc in 2nd ch from hook and in each ch across – 8 sc.

Row 2: Ch 1, turn, working in front loops only, sc in each st across.

Rep Row 2 until piece measures about 19 in. (48.5 cm) from beg. **Note:** Do not stretch ribbing when

measuring.

Do not fasten off.

Body

Rnd 1: Ch 1, work 55 sc evenly spaced across one long edge of ribbing; join with sl st in first sc – you will have 55 sc at the end of this rnd.

Rnd 2: Ch 1, sc in same st as joining and each st around; join with sl st in first sc.

Rep Rnd 2 until piece measures about 8 1/2 in. (21.5 cm) from beg.

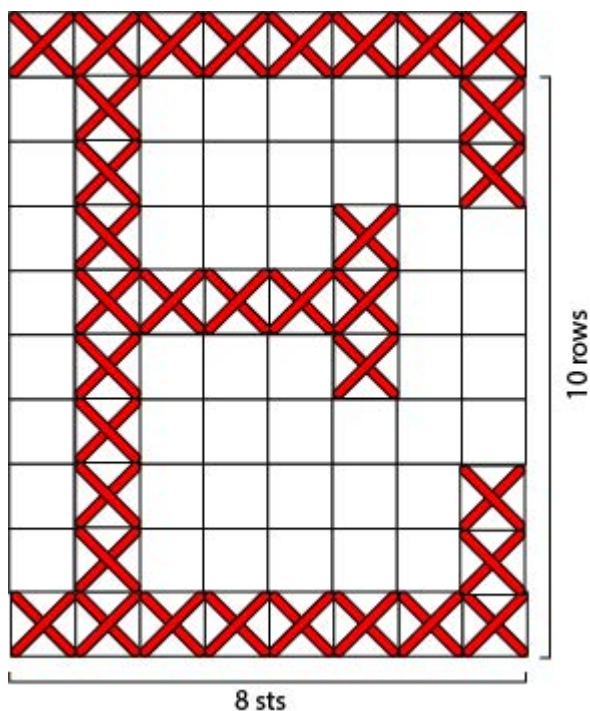
Fasten off, leaving a long yarn tail. Thread tail through sts of last rnd and pull to close top of Hat. Knot securely.

FINISHING

Sew ends of ribbing together.

With one strand of B threaded into blunt needle, beginning just above ribbing and following chart, cross stitch an "E" onto Hat.

Weave in ends.



ABBREVIATIONS / REFERENCES	
Click for explanation and illustration	
beg = begin(s)(ning)	ch(s) = chain(s)
rep = repeat(s)(ing)	rnd(s) = round(s)
sc = single crochet	sl st = slip stitch
st(s) = stitch(es)	

Learn to crochet instructions: <http://learnToCrochet.LionBrand.com>

Every effort has been made to have the knitting and crochet instructions accurate and complete. We cannot be responsible for variance of individual knitters and crocheters, human errors, or typographical mistakes.

We want your project to be a success! If you need help with this or any other Lion Brand pattern, e-mail support is available 7 days per week. Just click [here](#) to explain your problem and someone will help you!

For thousands of free patterns, visit our website www.LionBrand.com

To order visit our website www.lionbrand.com or call: (800) 258-YARN (9276) any time!

When in New York City, visit the Lion Brand Yarn Studio where we have the largest selection of our yarns anywhere and over 100 classes and events monthly.

34 West 15th Street, NY, NY 10011

Copyright ©1998-2016 Lion Brand Yarn Company, all rights reserved. No pattern or other material may be reproduced -- mechanically, electronically, or by any other means, including photocopying -- without written permission of Lion Brand Yarn Company.