



Free Crochet Pattern
Lion Brand® 24/7 Cotton
Flower Squares Girls Top
Pattern Number: L60133



SKILL LEVEL – Easy+

SIZE

Girls 6-8 (10-12)

Finished Chest About 30 (40) in. (76 (101.5) cm)

Finished Length About 16 (16) in. (40.5 (40.5) cm), not including fringe

Note: Pattern is written for smallest size with changes for larger size in parentheses. When only one number is given, it applies to both sizes. To follow pattern more easily, circle all numbers pertaining to your size before beginning.

MATERIALS

- Lion Brand® 24/7 Cotton (Art. #761)
 - 144 Magenta 1 (2) ball(s) (A)
 - 102 Aqua 1 (2) ball(s) (B)
 - 110 Navy 1 (2) ball(s) (C)
 - 142 Rose 1 (2) ball(s) (D)
 - 178 Jade 1 (2) ball(s) (E)
 - 098 Ecu 2 (3) balls (F)
 - or colors of your choice
- Lion Brand® crochet hook size E-4 (3.5 mm)
- Lion Brand® large-eyed blunt needle



ADDITIONAL MATERIALS

2 buttons, about 1 in. (2.5 cm) diameter
Sewing needle and thread

GAUGE

1 Flower Square = about 5 x 5 in. (12.5 x 12.5 cm).
BE SURE TO CHECK YOUR GAUGE.

STITCH EXPLANATIONS

dc2tog (dc 2 sts together) (Yarn over, insert hook in next st and draw up a loop, yarn over and draw through 2 loops) twice, yarn over and draw through all 3 loops on hook – 1 st decreased.

dc3tog (dc 3 sts together) (Yarn over, insert hook in next st and draw up a loop, yarn over, draw through 2 loops) 3 times, yarn over and draw through all 4 loops on hook, ch 1 very tightly to close the dc3tog (this ch 1 counts as part of the dc3tog, not as a separate ch) – 2 sts decreased.

For thousands of free patterns, visit our website www.LionBrand.com

To order visit our website www.lionbrand.com or call: (800) 258-YARN (9276) any time!

Copyright ©1998-2016 Lion Brand Yarn Company, all rights reserved.

No pattern or other material may be reproduced -- mechanically, electronically, or by any other means, including photocopying - without written permission of Lion Brand Yarn Company.

NOTES

1. Top is made from 26 (32) Flower Squares.
2. 13 (16) Flower Squares are crocheted together following diagrams to make the Front and Back.
3. Shoulders are worked in rows along top edges of Front and Back.
4. Side and shoulder seams are crocheted together.
5. Fringe is added to lower edge of Top.
6. For those who find visuals helpful, we've included stitch diagrams.

FLOWER SQUARE I (make 5 (7))

Wrap A around index finger. Insert hook into ring on finger, yarn over and draw up a loop. Carefully slip ring from finger and work the stitches of Rnd 1 into the ring. When Rnd 1 is complete, gently but firmly, pull tail to tighten center of ring.

Rnd 1 (RS): Ch 1, 8 sc in ring; join with sl st in first sc.

Rnd 2: Ch 1, 2 sc in each st around; join with sl st in first sc – you will have 16 sc in this rnd.

Fasten off.

Rnd 3 (RS): From RS, draw up a loop of B in any st, ch 6 (counts as dc, ch 3), sk next st, 3 dc in next st, *ch 3, sk next st, 3 dc in next st; rep from * to last st, ch 3, sk last st, work 2 dc in first st; join with sl st in 3rd ch of beg ch – Eight 3-dc groups and 8 ch-3 sps.

Rnd 4: Sl st in first ch-3 sp, ch 2, dc3tog, *ch 2, sl st in next ch-3 sp, ch 2, dc3tog; rep from * around, ch 2; join with sl st in first sl st – 8 dc3tog and 16 ch-2 sps (for 8 petals).

Fasten off.

Note: In Rnd 5 when instructed to work into a ch-3 sp of Rnd 3, work over the sl st of Rnd 4 that has already been worked into the ch-3 sp.

Rnd 5 (RS): From RS, draw up a loop of C in any ch-3 sp of Rnd 3, ch 4 (counts as tr), 2 dc in same ch-3 sp, sc in next dc3tog of Rnd 4, *(2 dc, tr, 2 dc) in next ch-3 sp of Rnd 3, sc in next dc3tog of Rnd 4; rep from * around, work 2 more dc in same ch-3 sp of Rnd 3 as joining; join with sl st in top of beg ch – 8 (2 dc, tr, 2 dc) groups and 8 sc.

Fasten off.

Rnd 6 (RS): From RS, join D with sc in any tr, sk next 2 sts, (4 dc, ch 2, 4 dc) in next st (corner made), *sk next 2 sts, sc in next 7 sts, sk next 2 sts, (4 dc, ch 2, 4 dc) in next st (corner made); rep from * to last 8 sts, sk next 2 sts, sc in last 6 sts; join with sl st in first sc – Four (4 dc, ch 2, 4 dc) corners and 28 sc (7 sc along each of 4 sides between corners).

Fasten off.

Rnd 7 (RS): From RS, draw up a loop of F in any corner ch-2 sp, ch 3 (counts as dc), (2 dc, ch 3, 3 dc) in same ch-2 sp, *(sk next 3 sts, 3 dc in next st) 3 times, sk next 3 sts, (3 dc, ch 3, 3 dc) in next corner ch-2 sp; rep from * 2 more times, (sk next 3 sts, 3 dc in next st) 3 times, sk last 3 sts; join with sl st in top of beg ch – Twenty 3-dc groups and 4 corner ch-3 sps (five 3-dc groups along each of 4 sides between corner ch-3 sps). Fasten off.

For thousands of free patterns, visit our website www.LionBrand.com

To order visit our website www.lionbrand.com or call: (800) 258-YARN (9276) any time!

Copyright ©1998-2016 Lion Brand Yarn Company, all rights reserved.

No pattern or other material may be reproduced -- mechanically, electronically, or by any other means, including photocopying - without written permission of Lion Brand Yarn Company.

FLOWER SQUARE II (make 5 (7))

Make same as Flower Square I using B for ring and Rnds 1 and 2, C for Rnds 3 and 4, D for Rnd 5, E for Rnd 6, and F for Rnd 7.

FLOWER SQUARE III (make 5 (5))

Make same as Flower Square I using C for ring and Rnds 1 and 2, D for Rnds 3 and 4, E for Rnd 5, A for Rnd 6, and F for Rnd 7.

FLOWER SQUARE IV (make 5 (7))

Make same as Flower Square I using D for ring and Rnds 1 and 2, E for Rnds 3 and 4, A for Rnd 5, B for Rnd 6, and F for Rnd 7.

FLOWER SQUARE V (make 6 (6))

Make same as Flower Square I using E for ring and Rnds 1 and 2, A for Rnds 3 and 4, B for Rnd 5, C for Rnd 6, and F for Rnd 7.

Arrange Squares as shown in diagrams.

Joining Squares

From RS and working in outside loop of sts in both Squares on each side of a vertical seam line, join F with sl st in center ch of corner ch-3 sp at beg of line, *ch 1, sl st in first st of next 3-dc group, (ch 3, sl st in first st of next 3-dc group) 4 times, ch 3, sl st in last st of same 3-dc group, ch 1; inserting hook in center ch of corner ch-3 sp of all Squares at corner work a sl st; rep from * all the way along the vertical line of Squares.

Fasten off.

Rep until all vertical lines of Squares have been seamed. Then rep along all horizontal lines of Squares.

Shoulders

Note: When working shoulders, work 1 st in each st and 2 sts in each corner ch-sp, as instructed.

First Shoulder

Row 1 (RS): From RS, join F to top edge of Front with sl st in last dc of 5th 3-dc group of first sleeve Square, 2 sc in corner ch-sp, 2 sc in corner ch-sp of next Square, sc in next 3 (5) sts, hdc in next 7 (9) sts, dc in next 26 (30) sts, dc2tog, dc in next st; leave rem sts unworked – 42 (50) sts (not counting sl st).

Row 2: Ch 3 (counts as dc), turn, sk first st, dc2tog, dc in next 21 (25) sts, hdc in next 7 (9) sts, sc in next 7 (9) sts, sl st in next st; leave rem sts unworked – 37 (45) sts (not counting sl st). Fasten off.

Second Shoulder

To beg size 6-8 draw up a loop of F in last dc of 5th 3-dc group of same Square as last st of Row 1 of first shoulder.

For thousands of free patterns, visit our website www.LionBrand.com

To order visit our website www.lionbrand.com or call: (800) 258-YARN (9276) any time!

Copyright ©1998-2016 Lion Brand Yarn Company, all rights reserved.

No pattern or other material may be reproduced -- mechanically, electronically, or by any other means, including photocopying - without written permission of Lion Brand Yarn Company.

To beg size 10-12 draw up a loop of F in first dc of 3rd 3-dc group of next Square following first shoulder.

Row 1 (RS): Ch 3 (counts as dc), dc2tog, dc in next 26 (30) sts, hdc in next 7 (9) sts, sc in next 7 (9), sl st in next st – 42 (50) sts (not counting sl st).

Row 2: Turn, sk first st, sl st in next 4 sts, sc in next 7 (9) sts, hdc in next 7 (9) sts, dc in next 21 (25) sts, dc2tog, dc in last st – 37 (45) sts (not counting sl sts).
Fasten off.

Rep to work shoulders on Back.

FINISHING

Seam Right Shoulder

From RS, beg at right sleeve edge, working in outside loops of sts in both Squares along shoulder, join F with sl st in center ch of corner ch-3 sp at beg of edge, ch 1, sl st in first st of next 3-dc group, (ch 3, sl st in first st of next 3-dc group) 4 times, (ch 3, sk next 2 sts, sl st in next st) 14 (17) times, ch 1, sl st in top of beg ch – 18 (21) ch-3 sps .

Fasten off.

Seam Left Shoulder

From RS, beg at left sleeve edge, working in outside loops of sts in both Squares along shoulder, join F with sl st in center ch of corner ch-3 sp at beg of edge, ch 1, sl st in first st of next 3-dc group, (ch 3, sl st in first st of next 3-dc group) 4 times, (ch 3, sk next 2 sts, sl st in next st) 11 (14) times; working in sts of Front shoulder only, (ch 3, sk next 2 sts, sl st in next st) 3 times, *working around Front neck edge only, (ch 3, sl st in end of next row) twice, (ch 3, sl st in last dc of next 3-dc group) 5 times, (ch 3, sl st in end of next row) twice, rep from * to work around Back neck edge only; working in sts of Back shoulder only, ch 3, sk first st, sl st in next st, (ch 3, sk next 2 sts, sl st in next st) twice; join with sl st in first sl st.

Fasten off.

With sewing needle and thread, sew buttons to Back shoulder, using ch-3 sps for button loops.

Sleeve Edgings and Seam Sleeves and Sides

From RS, working in back loops only, join F with a sl st in center ch of corner ch-3 sp at beg of sleeve edge, ch 1, sl st in first st of next 3-dc group, (ch 3, sl st in first st of next 3-dc group) 4 times, ch 3, sl st in first ch of next ch-3 sp,, ch 3, sl st in 3rd ch of next ch-3 sp, (ch 3, sl st in first st of next 3-dc group) 5 times, ch 1; inserting hook in center ch of corner ch-3 sp of both Squares at corner work a sl st; join sleeve and side seams same as Joining Squares.

Fasten off.

Rep on the other side.

For thousands of free patterns, visit our website www.LionBrand.com

To order visit our website www.lionbrand.com or call: (800) 258-YARN (9276) any time!

Copyright ©1998-2016 Lion Brand Yarn Company, all rights reserved.

No pattern or other material may be reproduced -- mechanically, electronically, or by any other means, including photocopying - without written permission of Lion Brand Yarn Company.

Lower Edging

From RS, join F with a sl st at side seam, working in back loops only, *(ch 3, sl st in first st of next 3-dc group) 5 times, ch 3, sl st in first ch of next ch-3 sp; rep from * around, ch 3, join with sl st in joining sl st.
Fasten off.

Fringe

Cut 3 strands of F about 8 in. (20.5 cm) long. Hold together and fold in half. Use crochet hook to draw fold through ch-3 sp along lower edge of piece, forming a loop. Pull ends of fringe through this loop. Pull to tighten. Make a fringe in each ch-3 space around. Trim fringe evenly.

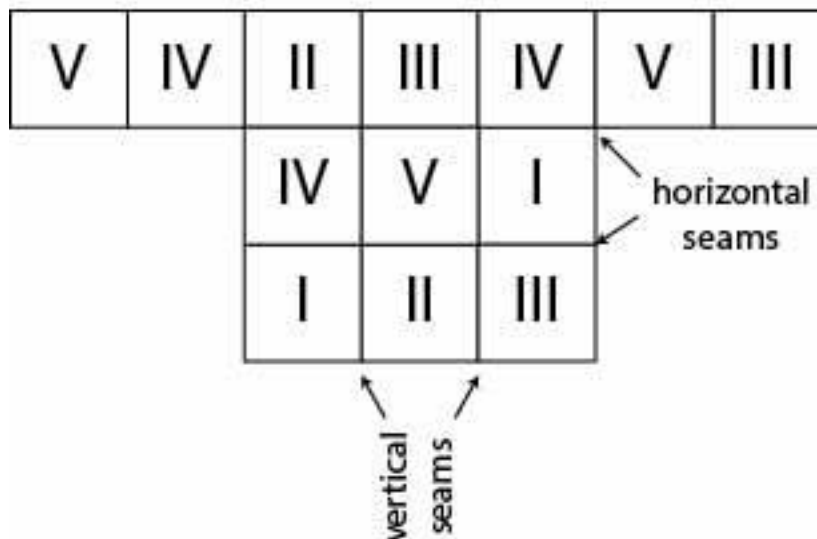
Weave in ends.

ABBREVIATIONS

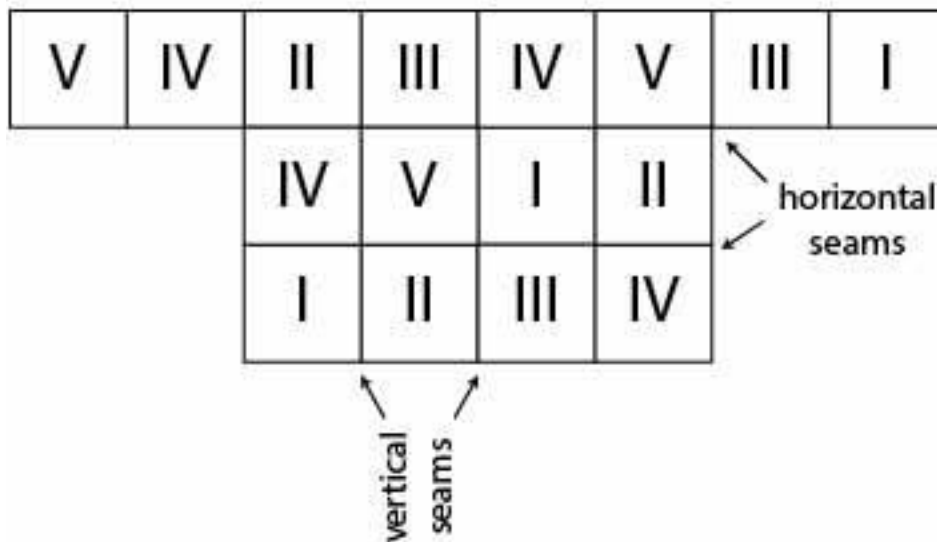
beg = begin(ning)
ch = chain
ch-sp(s) = chain space(s) previously made
dc = double crochet
hdc = half double crochet
rem = remain(ing)(s)
rep = repeat
rnd(s) = round(s)
RS = right side
sc = single crochet
sk = skip
sl st = slip stitch
st(s) = stitch(es)
tr = treble (triple) crochet
WS = wrong side

Every effort has been made to produce accurate and complete instructions. We cannot be responsible for variance of individual knitters or crocheters, human error, or typographical mistakes.

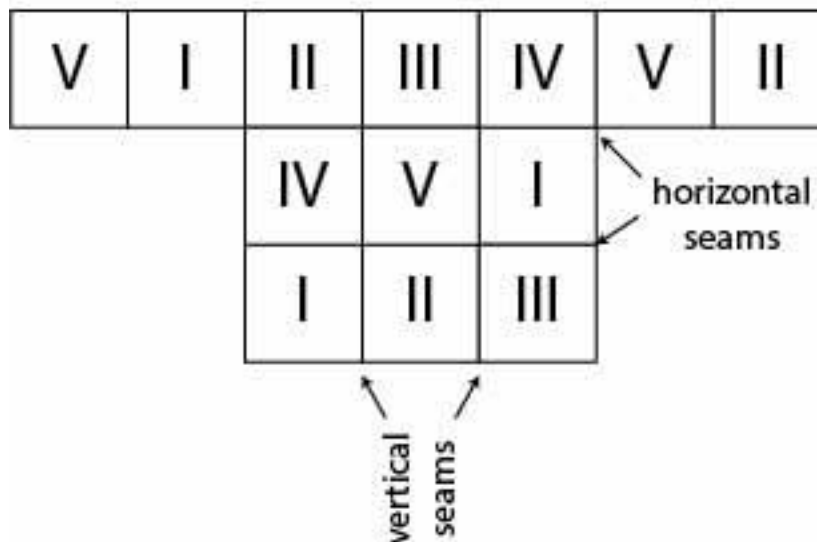
BACK
Size 6-8



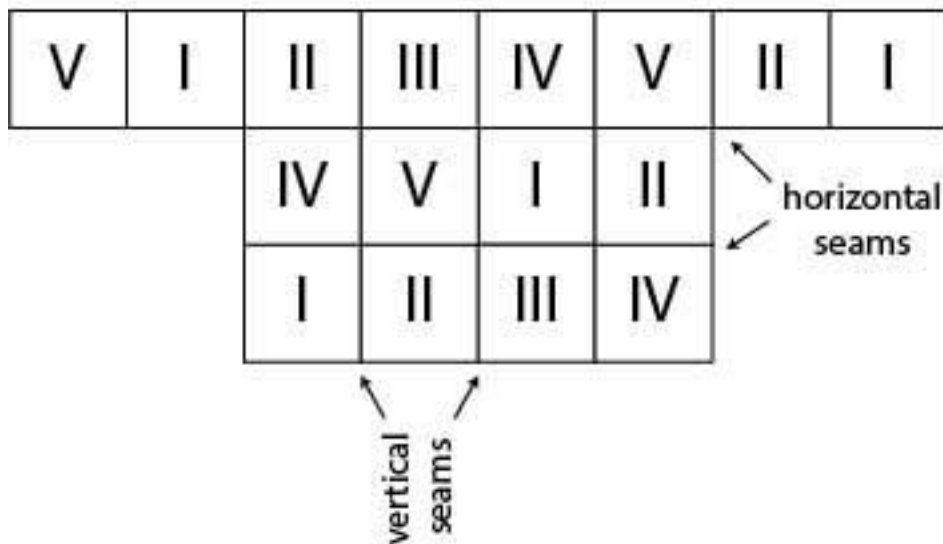
BACK
Size 10-12



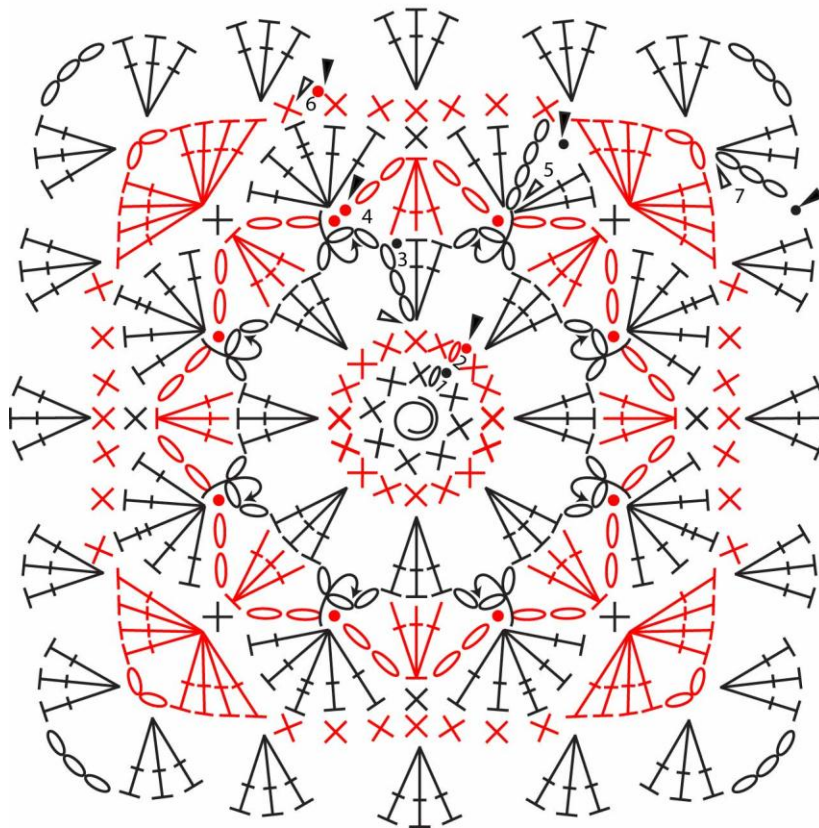
FRONT
Size 6-8



FRONT
Size 10-12

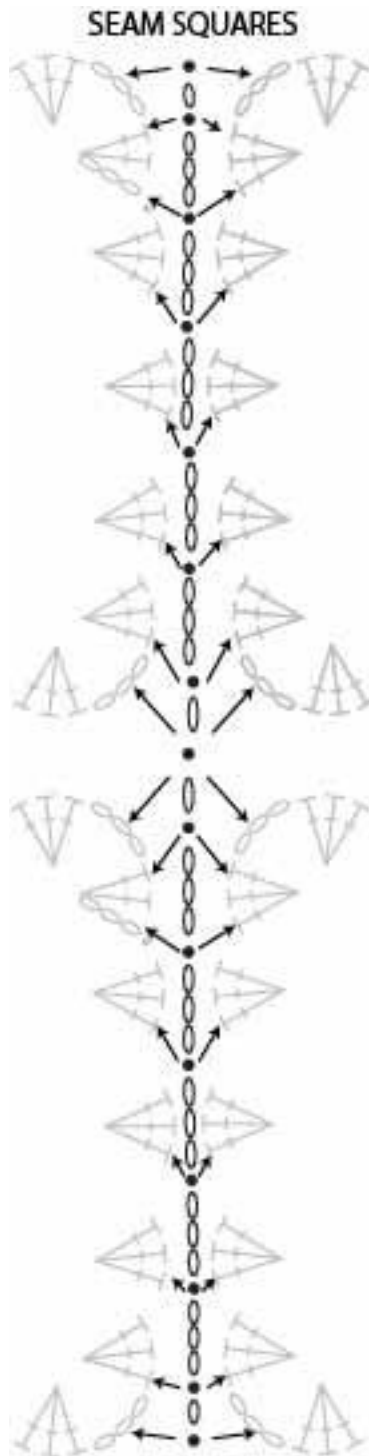


FLOWER-GRANNY SQUARE

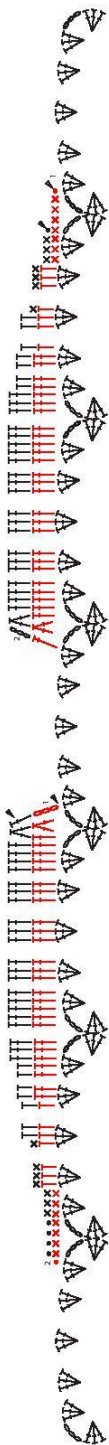


KEY

- = slip stitch (sl st)
- = chain (ch)
- X = single crochet (sc)
- ┆ = half double crochet (hdc)
- ┆ = double crochet (dc)
- ┆ = treble crochet (tr)
- ∧ = double crochet 2 together (dc2tog)
- ∧ = double crochet 3 together (dc3tog)
- ⊙ = adjustable ring
- ◁ = beg new color (draw up loop, join with sl st or sc)
- ◼ = fasten off



SHOULDERS
Size 6-8



SHOULDERS
Size 10-12

