



Free Crochet Pattern
Lion Brand® Color Waves
Neon Jungle Scarf
Pattern Number: L60118



SKILL LEVEL - Easy

SIZE

About 9 x 50 in. (23 x 127 cm), not including fringe.

MATERIALS

- Lion Brand® Color Waves (Art. #595)
 - 214 Newsprint 1 ball (A)
 - 217 Ocean Drive 1 ball (B)
 - or colors of your choice
- Lion Brand® crochet hook size G-6 (4.25 mm)
- Lion Brand® large-eyed blunt needle



GAUGE

Three 3-dc groups = about 3 in. (7.5 cm).
BE SURE TO CHECK YOUR GAUGE.

NOTES

1. Scarf is worked in one piece.
2. The yarn color is changed on every row but piece is only turned on every other row. Follow the pattern carefully and turn piece only when instructed.
3. When changing the yarn color, drop, but do not cut, the old color. Carry color not in use up side of piece until next needed.
4. Because the piece is only turned on every other row, the yarn color is changed using different methods for A and for B.
 - a. To change to A, work last st of B to last yarn over. Drop B. Return dropped loop of A to hook and draw through all loops to complete the last st. Turn the piece and proceed with A.
 - b. To change to B, remove the loop of A from hook and enlarge it or place it on a stitch marker or safety pin so that it does not unravel. Do not turn the piece. Return to beg of row just completed, insert hook in top of beg ch, yarn over with dropped strand of B and draw up a loop. Proceed with B.

SCARF

With A, ch 39.

Row 1 (RS): Dc in 4th ch from hook (3 skipped ch count as first dc), dc in next 2 ch, *ch 1, sk next ch, dc in next 3 ch; rep from * to last 5 ch, ch 1, sk next ch, dc in last 4 ch – you will have one 4-dc group at the beg and end of this row, seven 3-dc groups between the 4-dc groups, and 8 ch-1 sps. Remove loop of A from hook and enlarge it or place is on a stitch marker or safety pin so that it does not unravel.

For thousands of free patterns, visit our website www.LionBrand.com

To order visit our website www.lionbrand.com or call: (800) 258-YARN (9276) any time!

Copyright ©1998-2016 Lion Brand Yarn Company, all rights reserved.

No pattern or other material may be reproduced -- mechanically, electronically, or by any other means, including photocopying - without written permission of Lion Brand Yarn Company.

Row 2 (RS): From RS, insert hook in top of beg ch; leaving a long beg tail to weave in later, draw up a loop of B, ch 1, sc in top of same beg ch, *ch 3, sk next 3 dc, sc in next ch-1 sp; rep from * to last 4 dc, ch 3, sk next 3 dc, sc in last dc and change to A – 10 sc and 9 ch-3 sps. Drop but do not cut B.

Row 3 (WS): With A, ch 3 (counts as dc), TURN, 3 dc in first ch-3 sp, *ch 1, sk next sc, 3 dc in next ch-3 sp; rep from * to last sc, dc in last sc. Remove loop of A from hook and enlarge it or place it on a stitch marker or safety pin so that it does not unravel.

Row 4 (WS): From WS, insert hook in top of beg ch, pick up dropped strand of B and draw up a loop, ch 1, sc in top of same beg ch, *ch 3, sk next 3 dc, sc in next ch-1 sp; rep from * to last 4 dc, ch 3, sk next 3 dc, sc in last dc and change to A.

Row 5 (RS): With A, ch 3 (counts as dc), TURN, 3 dc in first ch-3 sp, *ch 1, sk next sc, 3 dc in next ch-3 sp; rep from * across, dc in last sc. Remove loop of A from hook and enlarge it or place it on a stitch marker or safety pin so that it does not unravel.

Row 6 (RS): From RS, insert hook in top of beg ch, pick up dropped strand of B and draw up a loop, ch 1, sc in top of beg ch, *ch 3, sk next 3 dc, sc in next ch-1 sp; rep from * to last 4 dc, ch 3, sk next 3 dc, sc in last dc and change to A – 10 sc and 9 ch-3 sps. Drop but do not cut B.

Rep Rows 3-6 until yarn A is almost gone, ending with a Row 3 or Row 5 as the last row you work.

Fasten off.

FINISHING

Fringe

Cut 80 strands of B approximately 15 in. (38 cm) long. For each fringe, hold 4 strands of yarn together and fold in half. Use crochet hook to draw fold through edge of Scarf, forming a loop. Pull ends of fringe through this loop. Pull to tighten. Make 10 fringe along each short side. Trim fringe evenly.

Weave in ends.

ABBREVIATIONS

beg = begin(ning)(s)

ch = chain

ch-sp(s) = chain space(s) previously made

dc = double crochet

rep = repeat

RS = right side

sc = single crochet

sk = skip

st(s) = stitch(es)

WS = wrong side

Every effort has been made to produce accurate and complete instructions. We cannot be responsible for variance of individual knitters or crocheters, human error, or typographical mistakes.

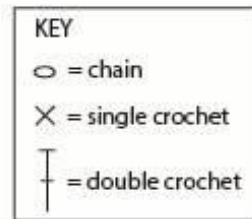
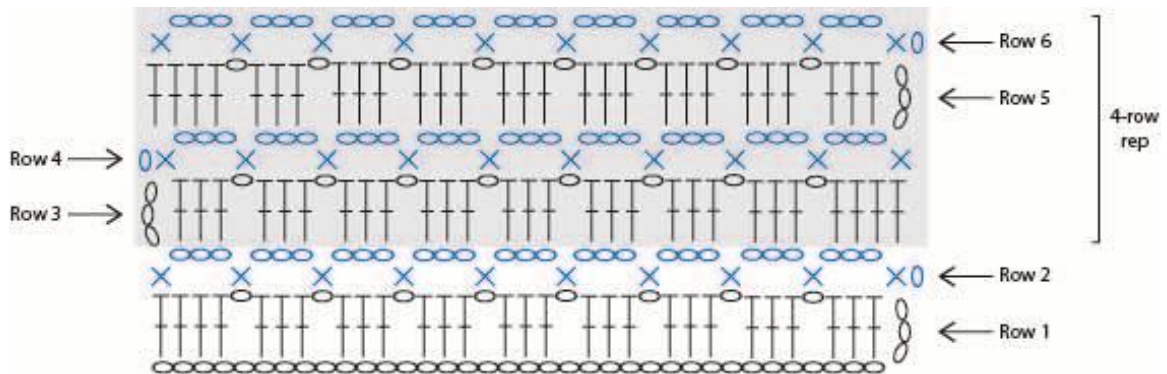
For thousands of free patterns, visit our website www.LionBrand.com

To order visit our website www.lionbrand.com or call: (800) 258-YARN (9276) any time!

Copyright ©1998-2016 Lion Brand Yarn Company, all rights reserved.

No pattern or other material may be reproduced -- mechanically, electronically, or by any other means, including photocopying - without written permission of Lion Brand Yarn Company.

Lion Brand® Color Waves Neon Jungle Scarf
Pattern Number: L60118



For thousands of free patterns, visit our website www.LionBrand.com
To order visit our website www.lionbrand.com or call: (800) 258-YARN (9276) any time!
Copyright ©1998-2016 Lion Brand Yarn Company, all rights reserved.
No pattern or other material may be reproduced -- mechanically, electronically, or by any other means, including photocopying - without written permission of Lion Brand Yarn Company.