



Free Crochet Pattern
Lion Brand® Wool-Ease® Thick & Quick®
Daisy Chain Scarf
Pattern Number: L60177



SKILL LEVEL – Easy+

SIZE

About 10 x 67 in. (25.5 x 170 cm)

MATERIALS

- Lion Brand® Wool-Ease® Thick & Quick® (Art. #640)
 - 154 Grey Marble 2 balls
 - or color of your choice
- Lion Brand® crochet hook size N-13 (9 mm)
- Lion Brand® large-eyed blunt needle



GAUGE

1 pattern rep = about 3 1/4 in. (8.5 cm). **Note:** One pattern rep consists of sc, (ch 9, sl st) twice, sc and the following ch-4 sp. BE SURE TO CHECK YOUR GAUGE.

NOTES

1. Scarf is worked in one piece.
2. For those who find a visual helpful, we've included a stitch diagram.

SCARF

Ch 21.

Row 1: Sc in 2nd ch from hook, ch 9, sl st in last sc made, sc in next ch, *ch 4, sk next 4 ch, sc in next ch, (ch 9, sl st in last sc made) twice, sc in next ch; rep from * to last 6 ch, ch 4, sk next 4 ch, sc in next ch, ch 9, sl st in last sc made, sc in last ch – you will have 8 sc, 3 ch-4 sps, and 6 ch-9 sps in this row (for 3 pattern reps).

Row 2: Ch 6 (counts as tr, ch 2), turn, (sc in 5th ch of next ch-9 sp) twice, *ch 4, (sc in 5th ch of next ch-9 sp) twice; rep from * across, ch 2, tr in last sc – 2 tr, 6 sc, 2 ch-4 sps, and 2 ch-2 sps.

Row 3: Ch 1, turn, sc in first st, ch 2, sk first ch-2 sp, sc in next sc, (ch 9, sl st in last sc made) twice, sc in next sc, *ch 4, sk next ch-4 sp, sc in next sc, (ch 9, sl st in last sc made) twice, sc in next sc; rep from * to beg ch, ch 2, sc in 4th ch of beg ch-6 – 8 sc, 2 ch-2 sps, 2 ch-4 sps, and 6 ch-9 sps.

Row 4: Ch 4 (counts as tr), turn, sc in 5th ch of first ch-9 sp, *ch 4, (sc in 5th ch of next ch-9 sp) twice; rep from * to last ch-9 sp, ch 4, sc in 5th ch of last ch-9 sp, tr in last sc – 2 tr, 6 sc, and 3 ch-4 sps.

Row 5: Ch 1, turn, sc in first st, ch 9, sl st in last sc made, sc in next st, *ch 4, sk next ch-4 sp, sc in next sc, (ch 9, sl st in last sc made) twice, sc in next sc; rep

For thousands of free patterns, visit our website www.LionBrand.com

To order visit our website www.lionbrand.com or call: (800) 258-YARN (9276) any time!

Copyright ©1998-2016 Lion Brand Yarn Company, all rights reserved.

No pattern or other material may be reproduced -- mechanically, electronically, or by any other means, including photocopying - without written permission of Lion Brand Yarn Company.

from * to last ch-4 sp, ch 4, sk last ch-4 sp, sc in next sc, ch 9, sl st in last sc made, sc in top of beg ch-4 – 8 sc, 3 ch-4 sps, and 6 ch-9 sps.

Rep Rows 2-5 until piece measures about 66 1/2 in. (169 cm) from beg, end with a Row 4 as the last row you work.

Last Row: Ch 1, turn, sc in first 2 sts, *ch 4, sk next ch-4 sp, sc in next 2 sc; rep from * to last ch-4 sp, ch 4, sk last ch-4 sp, sc in next sc, sc in top of beg ch-4 – 8 sc and 3 ch-4 sps.

Fasten off.

FINISHING

Weave in ends.

ABBREVIATIONS

beg = begin(ning)

ch = chain

ch-sp(s) = chain space(s) previously made

rep = repeat

sc = single crochet

sk = skip

sl st = slip stitch

st(s) = stitch(es)

tr = treble (triple) crochet

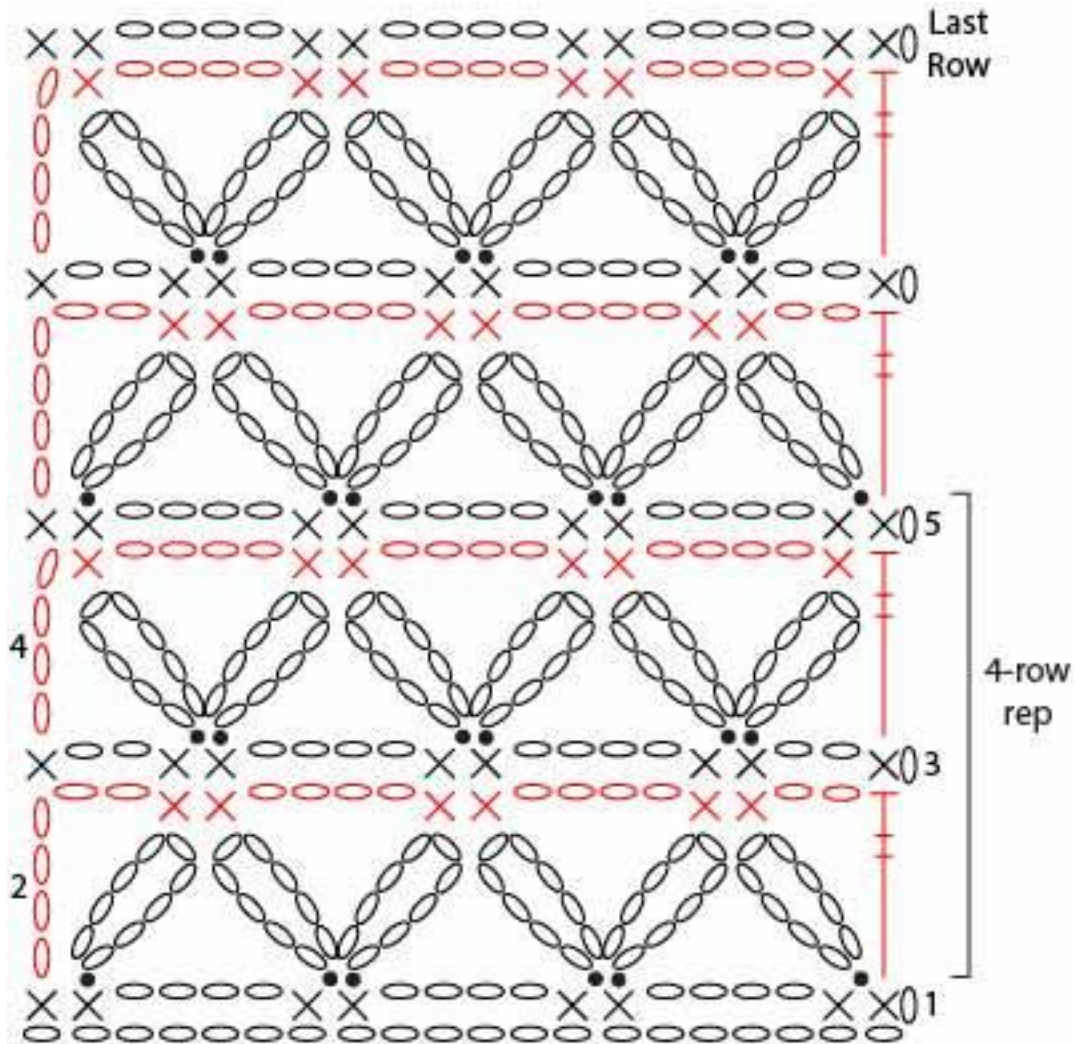
Every effort has been made to produce accurate and complete instructions. We cannot be responsible for variance of individual knitters or crocheters, human error, or typographical mistakes.

For thousands of free patterns, visit our website www.LionBrand.com

To order visit our website www.lionbrand.com or call: (800) 258-YARN (9276) any time!

Copyright ©1998-2016 Lion Brand Yarn Company, all rights reserved.

No pattern or other material may be reproduced -- mechanically, electronically, or by any other means, including photocopying - without written permission of Lion Brand Yarn Company.



KEY

- = slip stitch (sl st)
- = chain (ch)
- × = single crochet (sc)
- ⊥ = treble (triple) crochet (tr)