



Free Crochet Pattern
Lion Brand® Homespun®
Miss Yvette's Afghan
Pattern Number: 90473B



SKILL LEVEL - Easy

SIZE

About 46 x 46 in. (117 x 117 cm)

MATERIALS

- Lion Brand® Homespun®
(Art. #790)
 - 422 Wisteria 2 skeins (A)
 - 421 Purple Haze 3 skeins (B)
 - or colors of your choice
- Lion Brand® crochet hook size K-10.5
(6 mm)
- Lion Brand® large-eyed blunt needle



GAUGE

Rnds 1-2 of Square = about 3 1/2 in. (9 cm)

1 Square = about 15 x 15 in. (38 x 38 cm)

BE SURE TO CHECK YOUR GAUGE.

NOTES

1. Squares are worked in joined rnds, with RS always facing you. Each rnd is worked in a different color. Fasten off at the end of each rnd and join new color at the beg of each new rnd.
2. A stitch diagram is provided for how to construct the Square. Refer to written instructions for specific Square for colors.
3. To keep Afghan square, join new color in a different corner on each rnd.
4. Nine Squares are worked in 3 different color sequences. Squares are arranged according to Assembly Diagram and sewn tog.

SQUARE 1 (make 3)

With A, ch 4; join with sl st in first ch to form a ring.

Rnd 1 (RS): Ch 3 (counts as dc on this row and on all rows of this pattern), 2 dc in ring, ch 2, (3 dc in ring, ch 2) 3 times; join with sl st in top of beg ch – 12 dc and 4 ch-2 sps at the end of this rnd. Fasten off.

Rnd 2: With RS facing, join B with sl st in any ch-2 sp, ch 3, (2 dc, ch 2, 3 dc) in same ch-2 sp (beg corner made), ch 1, *(3 dc, ch 2, 3 dc) in next ch-2 sp (corner made), ch 1; rep from * around; join with sl st in top of beg ch – 24 dc, 4 ch-2 sps, and 4 ch-1 sps at the end of this rnd. Fasten off.

Rnd 3: With RS facing, join C with sl st in any corner ch-2 sp, ch 3, (2 dc, ch 2, 3 dc) in same ch-2 sp, ch 1, 3 dc in next ch-1 sp, ch 1, *(3 dc, ch 2, 3 dc) in next ch-2 sp, ch 1, 3 dc in next ch-1 sp, ch 1; rep from * around; join with sl st in top of beg ch. Fasten off.

Rnd 4: With RS facing, join A with sl st in any corner ch-2 sp, ch 3, (2 dc, ch 2, 3 dc) in same ch-2 sp, ch 1, (3 dc in next ch-1 sp, ch 1) to next corner, *(3 dc, ch 2,

For thousands of free patterns, visit our website www.LionBrand.com

To order visit our website www.lionbrand.com or call: (800) 258-YARN (9276) any time!

Copyright ©1998-2016 Lion Brand Yarn Company, all rights reserved.

No pattern or other material may be reproduced -- mechanically, electronically, or by any other means, including photocopying - without written permission of Lion Brand Yarn Company.

3 dc) in corner ch-2 sp, ch 1, (3 dc in next ch-1 sp, ch 1) to next corner; rep from * around; join with sl st in top of beg ch. Fasten off.

Rnds 5-10: Rep Row 4 six times, working 1 rnd each with B, C, A, B, C, and A.

SQUARE 2 (make 3)

Work same as Square 1, working 1 rnd each with: B, C, A, B, C, A, B, C, A, B.

SQUARE 3 (make 3)

Work same as Square 1, working 1 rnd each with: C, A, B, C, A, B, C, A, B, C.

FINISHING

Following Assembly Diagram, sew Squares tog.

Border

Rnd 1: Join B with sc in any dc; sc in each dc and ch-sp around, working (sc, ch 2, sc) in each outer corner ch-2 sp; join with sl st in first sc.

Rnd 2: Ch 1, sc in each sc around, working (sc, ch 2, sc) in each corner ch-2 sp; join with st st in first sc. Fasten off.

Weave in ends.

ABBREVIATIONS

beg = begin(ning)

ch = chain

ch-space = space previously made

dc = double crochet

rnd(s) = round(s)

sc = single crochet

sl st = slip stitch

sp(s) = space(s)

st(s) = stitch(es)

tog = together

Every effort has been made to produce accurate and complete instructions. We cannot be responsible for variance of individual knitters or crocheters, human error, or typographical mistakes.

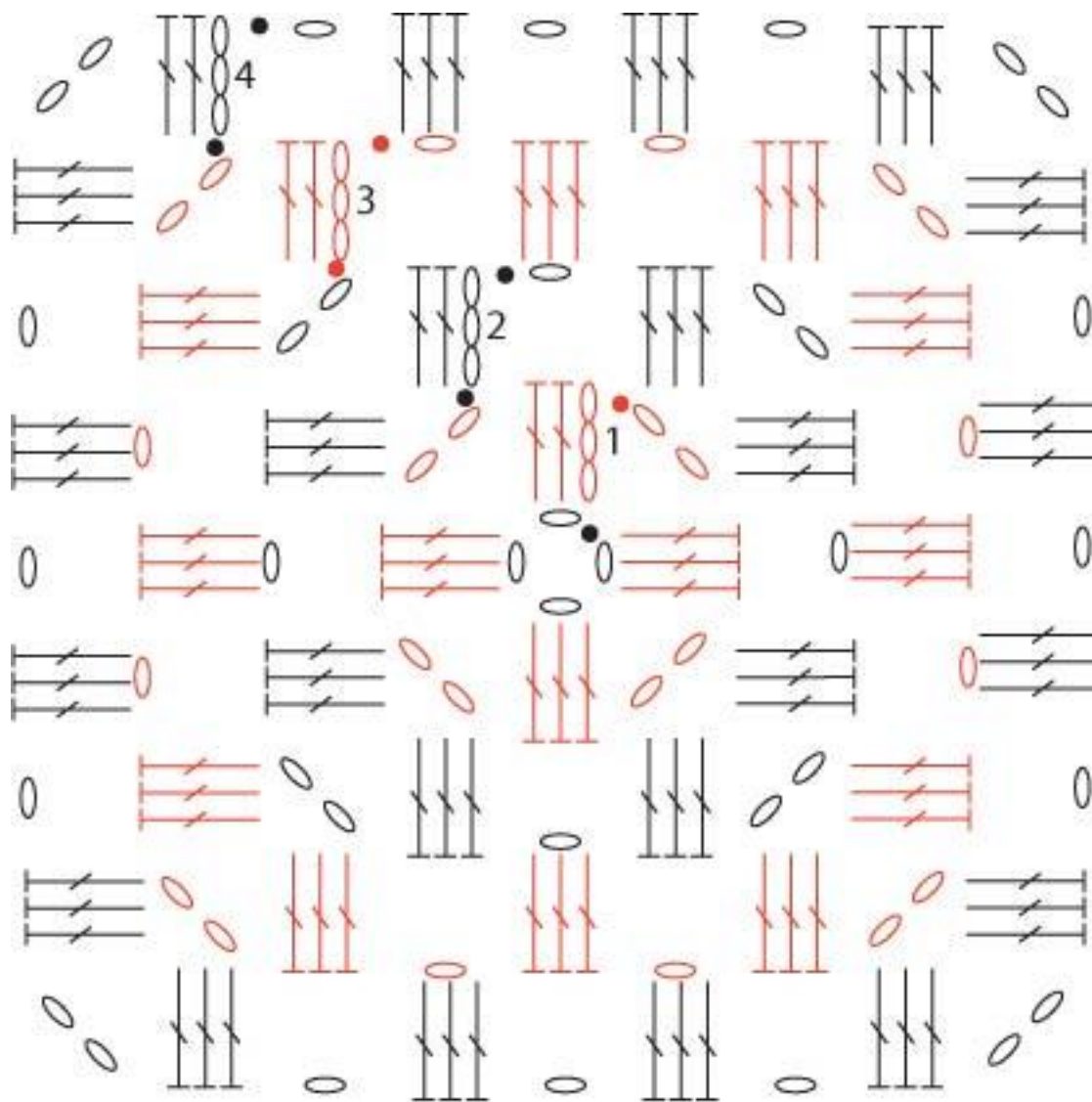
For thousands of free patterns, visit our website www.LionBrand.com

To order visit our website www.lionbrand.com or call: (800) 258-YARN (9276) any time!

Copyright ©1998-2016 Lion Brand Yarn Company, all rights reserved.

No pattern or other material may be reproduced -- mechanically, electronically, or by any other means, including photocopying - without written permission of Lion Brand Yarn Company.

| | | |
|---|---|---|
| 1 | 2 | 3 |
| 2 | 3 | 1 |
| 3 | 1 | 2 |



- = slip stitch (sl st)
- = chain (ch)
- ⌋ = double crochet (dc)