



Free Crochet Pattern
Lion Brand® Fishermen's Wool
Out of the Box Wrap
Pattern Number: 90368



SKILL LEVEL - Experienced

SIZE

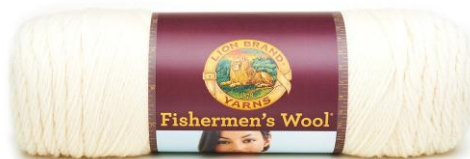
Finished Length About 25 in. (63.5 cm), including collar

Finished Bust About 48 in. (122 cm)

Finished Width (along lower edge) About 72 in. (183 cm).

MATERIALS

- Lion Brand® Fishermen's Wool (Art. #150)
 - 098 Natural 2 skeins
 - or color of your choice
- Lion Brand® crochet hook size K-10.5 (6.5 mm)
- Lion Brand® stitch markers
- Lion Brand® large-eyed blunt needle



ADDITIONAL MATERIALS

Small amount of yarn (for stuffing)

GAUGE

1 (shell, ch 7) + 3 rows = 4 1/2 in. (11.5 cm) in pattern.

BE SURE TO CHECK YOUR GAUGE.

STITCH EXPLANATIONS

BPDC (back post double crochet) Yo, insert hook from back to front then to back, going around the post of st, draw up a loop, (yo and draw through 2 loops on hook) twice. Skip st in front of the BPDC.

FPDC (front post double crochet) Yo, insert hook from front to back then to front, going around the post of st, draw up a loop, (yo and draw through 2 loops on hook) twice. Skip st behind the FPDC.

FPTR (front post treble crochet) Yo twice, insert hook from front to back then to front, going around the post of st, draw up a loop, (yo and draw through 2 loops on hook) 3 times. Skip st behind the FPTR.

popcorn 5 tr in indicated st, drop loop from hook, insert hook in first tr and draw dropped loop through, ch 1. **Note:** When working into a popcorn stitch, work into the ch-1 only.

rev sc (reverse single crochet) Single crochet worked from left to right (right to left, if left-handed). Insert hook into next stitch to the right (left), under loop on hook, and draw up a loop. Yarn over, draw through all loops on hook.

shell (3-tr cluster, ch 2, 3-tr cluster) in indicated st or ch-sp.

3-tr cluster Yo twice, insert hook in indicated st and draw up a loop, (yo and draw through 2 loops on hook) twice (2 loops on hook), *Yo twice, insert hook in same st and draw up a loop, (yo and draw through 2 loops on hook) twice; rep from * once more, yo and draw through all 4 loops on hook.

For thousands of free patterns, visit our website www.LionBrand.com

To order visit our website www.lionbrand.com or call: (800) 258-YARN (9276) any time!

Copyright ©1998-2016 Lion Brand Yarn Company, all rights reserved.

No pattern or other material may be reproduced -- mechanically, electronically, or by any other means, including photocopying - without written permission of Lion Brand Yarn Company.

Cord

With 2 strands of yarn held tog, ch 3, 3 sc in 2nd ch from hook, work in rnds in a continuous spiral beg over 3 sc just made, sc in front loop of first sc, *sc in front loop of next sc; rep from * until cord measures specified length.

NOTE

Wrap is worked with 2 strands of yarn held together throughout.

WRAP

With 2 strands of yarn held tog, ch 70.

Row 1: Shell in 6th ch from hook (beg shell made), *ch 15, sk next 15 ch, shell in next ch, (ch 5, sk next 3 ch, shell in next ch) twice; rep from * once more, ch 15, sk next 15 ch, shell in last ch – 8 shells at end of this row.

Row 2 (RS): Ch 4, turn, shell in ch-2 sp of first shell, *ch 15, (shell in ch-2 sp of next shell, ch 6) twice, shell in ch-2 sp of next shell; rep from * once more, ch 15, shell in ch-2 sp of last shell, ch 1, tr in top of t-ch.

Row 3: Ch 5 (counts as tr, ch 1), turn, 4 tr in first ch-1 sp, ch 2, shell in ch-2 sp of next shell, *ch 15, (shell in ch-2 sp of next shell, ch 7) twice, shell in ch-2 sp of next shell; rep from * once more, ch 15, shell in ch-2 sp of last shell, ch 1, tr in top of t-ch.

Row 4: Ch 5, turn, 4 tr in first ch-1 sp, ch 2, shell in ch-2 sp of next shell, *ch 11, work an sc over the 4 ch-15 sps in previous rows to join them tog; ch 3, turn, tr in each ch of ch-11 just made; ch 3, turn, tr in first tr, (popcorn in next tr, tr in next tr) 5 times; ch 3, turn, tr in first 2 sts, (popcorn in next st, tr in next st) 4 times, tr in last tr; ch 3, turn, tr in each st across (Block made); (shell in ch-2 sp of next shell, ch 7) twice, shell in ch-2 sp of next shell; rep from * once more, ch 11, work an sc over the 4 ch-15 sps in previous rows to join them tog; ch 3, turn, tr in each ch of ch-11 just made; ch 3, turn, tr in first tr, (popcorn in next tr, tr in next tr) 5 times; ch 3, turn, tr in first 2 sts, (popcorn in next st, tr in next st) 4 times, tr in last tr; ch 3, turn, tr in each st across (Block made); shell in ch-2 sp of next shell, ch 2, 4 tr in next ch-2 sp, ch 2, 4 tr in turning ch-sp, tr in 4th ch of t-ch – 3 Blocks at the end of this row.

Row 5: Ch 5, turn, (4 tr in next ch-2 sp, ch 2) twice, shell in ch-2 sp of next shell, *ch 15, sk Block, (shell in ch-2 sp of next shell, ch 7) twice, shell in ch-2 sp of next shell; rep from * once more, ch 15, sk Block, shell in ch-2 sp of next shell, ch 2, 4 tr in next ch-2 sp, ch 2, 4 tr in turning ch-sp, tr in 4th ch of t-ch.

Row 6: Ch 5, turn, (4 tr in next ch-2 sp, ch 2) twice, shell in ch-2 sp of next shell, *ch 15, (shell in ch-2 sp of next shell, ch 7) twice, shell in ch-2 sp of next shell; rep from * once more, ch 15, shell in ch-2 sp of next shell, (ch 2, 4 tr in next ch-2 sp) twice, ch 2, 4 tr in turning ch-sp, tr in 4th ch of t-ch.

Row 7: Ch 5, turn, (4 tr in next ch-2 sp, ch 2) 3 times, shell in ch-2 sp of next shell, *ch 15, (shell in ch-2 sp of next shell, ch 7) twice, shell in ch-2 sp of next shell; rep from * once more, ch 15, shell in ch-2 sp of next shell, (ch 2, 4 tr in next ch-2 sp) twice, ch 2, 4 tr in turning ch-sp, tr in 4th ch of t-ch.

Row 8: Ch 5, turn, (4 tr in next ch-2 sp, ch 2) 3 times, shell in ch-2 sp of next shell, *ch 15, (shell in ch-2 sp of next shell, ch 7) twice, shell in ch-2 sp of next

For thousands of free patterns, visit our website www.LionBrand.com

To order visit our website www.lionbrand.com or call: (800) 258-YARN (9276) any time!

Copyright ©1998-2016 Lion Brand Yarn Company, all rights reserved.

No pattern or other material may be reproduced -- mechanically, electronically, or by any other means, including photocopying - without written permission of Lion Brand Yarn Company.

shell; rep from * once more, ch 15, shell in ch-2 sp of next shell, (ch 2, 4 tr in next ch-2 sp) 3 times, ch 2, 4 tr in turning ch-sp, tr in 4th ch of t-ch.

Row 9: Ch 5, turn, (4 tr in next ch-2 sp, ch 2) 4 times, shell in ch-2 sp of next shell, *ch 11, working over the 4 ch-15 sps in previous rows to join them tog, sc into the corner of the Block below; ch 3, turn, tr in each ch of ch-11 just made; ch 3, turn, tr in first tr, (popcorn in next tr, tr in next tr) 5 times; ch 3, turn, tr in first 2 sts, (popcorn in next st, tr in next st) 4 times, tr in last tr; ch 3, turn, tr in each st across; (shell in ch-2 sp of next shell, ch 7) twice, shell in ch-2 sp of next shell; rep from * once more, ch 11, working over the 4 ch-15 sps in previous rows to join them tog, sc into the corner of the Block below; ch 3, turn, tr in each ch of ch-11 just made; ch 3, turn, tr in first tr, (popcorn in next tr, tr in next tr) 5 times; ch 3, turn, tr in first 2 sts, (popcorn in next st, tr in next st) 4 times, tr in last tr; ch 3, turn, tr in each st across; shell in ch-2 sp of next shell, (ch 2, 4 tr in next ch-2 sp) 3 times, ch 2, 4 tr in turning ch-sp, tr in 4th ch of t-ch.

Row 10: Ch 5, turn, (4 tr in next ch-2 sp, ch 2) 4 times, shell in ch-2 sp of next shell; *Make Cord until cord measures about 6 in. (15 cm); (shell in ch-2 sp of next shell, ch 7) twice, shell in ch-2 sp of next shell; rep from * once more, Make Cord until cord measures about 6 in. (15 cm), shell in ch-2 sp of next shell, (ch 2, 4 tr in next ch-2 sp) 4 times, ch 2, 4 tr in turning ch-sp, tr in 4th ch of t-ch.

Row 11: Ch 5, turn, (4 tr in next ch-2 sp, ch 2) 5 times, shell in ch-2 sp of next shell; *Make Cord until cord measures about 6 in. (15 cm); (shell in ch-2 sp of next shell, ch 7) twice, shell in ch-2 sp of next shell; rep from * once more, Make Cord until cord measures about 6 in. (15 cm), shell in ch-2 sp of next shell, (ch 2, 4 tr in next ch-2 sp) 4 times, ch 2, 4 tr in turning ch-sp, tr in 4th ch of t-ch.

Fasten off.

Row 12: Turn, join yarn with sl st in ch-2 sp of first shell, ch 4, shell in same ch-2 sp, *Make Cord until cord measures about 7 in. (18 cm); (shell in ch-2 sp of next shell, ch 7) twice, shell in ch-2 sp of next shell; rep from * once more, Make Cord until cord measures about 7 in. (18 cm), shell in ch-2 sp of next shell; leave remaining sts unworked.

Row 13: Ch 5, turn, shell in ch-2 sp of first shell, *Make Cord until cord measures about 8 in. (20.5 cm); (shell in ch-2 sp of next shell, ch 7) twice, shell in ch-2 sp of next shell; rep from * once more, Make Cord until cord measures 8 in. (20.5 cm), shell in ch-2 sp of next shell.

Fasten off.

Edging

With RS facing, join 2 strands of yarn with sl st in top of shell at end of Row 12.

Row 1: *Ch 3, (tr, ch 2, tr) in next ch-sp; rep from * across to corner, (tr, ch 2, tr, ch 3, tr, ch 2, tr) in corner ch-sp; working in ends of rows, ch 3, sk next row, **(tr, ch 2, tr) in end of next row, ch 3; rep from ** across to top corner, tr in top corner.

Row 2: Ch 2, sk next ch-3 sp, *tr in next ch-2 sp, ch 3, sl st in top of tr just made (picot made), (tr in same ch-2 sp, picot) 3 times, ch 2, sc in next ch-3 sp, ch 2; rep from * across; sl st in top of shell at end of Row 13.

Rep Edging along other edge.

For thousands of free patterns, visit our website www.LionBrand.com

To order visit our website www.lionbrand.com or call: (800) 258-YARN (9276) any time!

Copyright ©1998-2016 Lion Brand Yarn Company, all rights reserved.

No pattern or other material may be reproduced -- mechanically, electronically, or by any other means, including photocopying - without written permission of Lion Brand Yarn Company.

COLLAR

From WS, join 2 strands of yarn with sl st in top corner of Shawl.

Row 1: Ch 3, work 60 dc evenly across neck edge.

Row 2: Ch 3, turn, FPDC around each st across.

Row 3: Ch 3, turn, BPDC around each st across.

Row 4: Rep Row 2.

Rep last 2 rows twice. Fasten off.

From RS, join yarn with sl st in end of first row of Collar.

Next Row: Ch 1, rev sc evenly around all edges of Collar. Fasten off.

Make Cord until cord measures about 120 in. (305 cm). Center cord over first row of Collar and sew in place, leaving ends of cord free on each side for tying.

SLEEVE (make 2)

With 2 strands of yarn held tog, ch 28; join with sl st in first ch to form a ring.

Rnd 1: Ch 3, tr in each ch around; do not join, work in continuous rounds – 28 tr at the end of this rnd.

Rnds 2-6: *FPTR around next st, tr in next st; rep from * around.
Fasten off.

BALL (make 4)

With 2 strands of yarn held tog, ch 2.

Rnd 1: 3 sc in 2nd ch from hook; do not join, work in continuous rounds – 3 sc at end of this rnd.

Rnd 2: Working in back loops only, 2 sc in each sc around – 6 sc at end of this rnd.

Rnd 3: Working in back loops only, (sc in next sc, 2 sc in next sc) 3 times – 9 sc at end of this rnd.

Stuff center with scraps of yarn.

Rnd 4: Working in back loops only, sc in each sc around.

Rnd 5: Working in back loops only, sc in next st, (sk next st, sc in next st) 4 times – 5 sts at end of this rnd.

Cut yarn, leaving a long tail. Thread tail through remaining sts and pull to gather. Knot securely.

CLOSURE

Circle (make 2)

With 2 strands of yarn held tog, ch 10; join with sl st in first ch to form a ring.

Rnd 1: Ch 1, working in back loops only, *sc in next ch, 2 sc in next ch; rep from * around; join with sl st in first sc – 15 sc at end of this rnd.

Rnd 2: Ch 1, working in back loops only, sc in each sc around.

Rnd 3: Ch 1, rev sc in each sc around.

Fasten off.

Band

With 2 strands of yarn held tog, ch 14.

Row 1: Tr in 5th ch from hook, tr in each ch across – 10 tr.

Row 2: Ch 1, do not turn, rev sc evenly around all edges of band.

For thousands of free patterns, visit our website www.LionBrand.com

To order visit our website www.lionbrand.com or call: (800) 258-YARN (9276) any time!

Copyright ©1998-2016 Lion Brand Yarn Company, all rights reserved.

No pattern or other material may be reproduced -- mechanically, electronically, or by any other means, including photocopying - without written permission of Lion Brand Yarn Company.

Fasten off.
Sew one circle to each end of band.

FINISHING

Hold one Sleeve under first Block of last row of Blocks. Sew one half of top of Sleeve across diagonal of Block. Sew other Sleeve under last Block of last row of Blocks. Sew lower corner of center Block of last row of Blocks to center of first cord.

Sew one ball to each side of front neck of Shawl. Sew one ball to each end of tying cord. Press balls through circles at ends of Closure to button shawl closed.

Weave in ends.

ABBREVIATIONS

beg = begin(ning)
ch = chain
ch-space = space previously made
rep = repeat(s)(ing)
rnd = round
RS = right side
sc = single crochet
sk = skip
sl st = slip stitch
sp(s) = space(s)
st(s) = stitch(es)
t-ch = turning chain
tog = together
tr = triple (treble) crochet
yo = yarn over
WS = wrong side

Every effort has been made to produce accurate and complete instructions. We cannot be responsible for variance of individual knitters or crocheters, human error, or typographical mistakes.

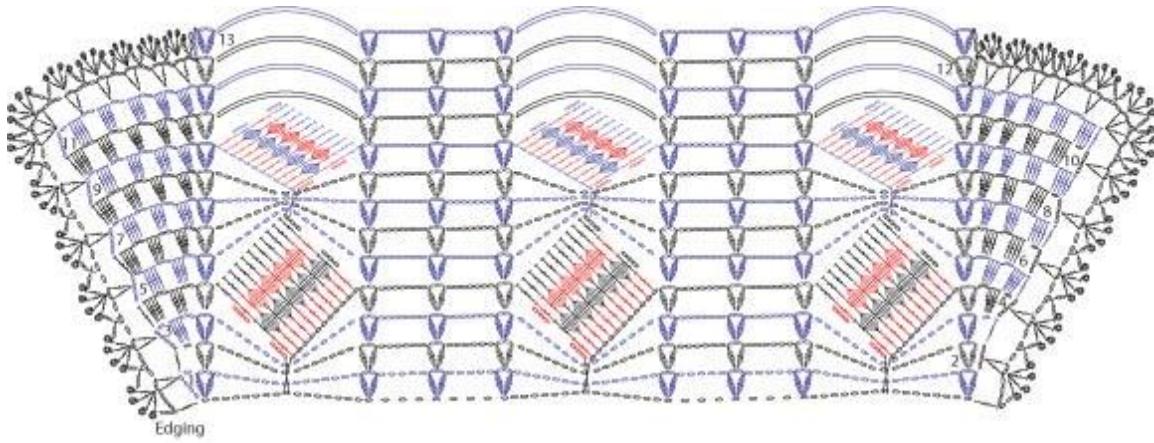


Diagram Key

- = slip stitch (sl st)
- = chain (ch)
- x = single crochet (sc)
- ↓ = treble crochet (tr)
- ⊖ = popcorn
- ⦶ = 3 treble cluster (3-tr Cl)
- ⦶ = shell: (3-tr Cl, ch 2, 3-tr Cl)
- ⌒ = Make Cord
- ◊ = picot

For thousands of free patterns, visit our website www.LionBrand.com

To order visit our website www.lionbrand.com or call: (800) 258-YARN (9276) any time!

Copyright ©1998-2016 Lion Brand Yarn Company, all rights reserved.

No pattern or other material may be reproduced -- mechanically, electronically, or by any other means, including photocopying - without written permission of Lion Brand Yarn Company.