



Free Knitting Pattern
Lion Brand® Baby Wool
Fruit Smoothie Tam
Pattern Number: L0021



SKILL LEVEL - Intermediate

SIZES

Baby (Toddler, Child)

Finished Circumference (at ribbing) 15 (17, 19) in. (38 (43, 48.5) cm)

Note: Pattern is written for smallest size with changes for larger sizes in parentheses. When only one number is given, it applies to all sizes. To follow pattern more easily, circle all numbers pertaining to your size before beginning. Tam will stretch to fit a range of sizes.

MATERIALS

- Lion Brand® Baby Wool (Art. #823)
 - 172 Pear 1 ball (A)
 - 102 Peony 1 ball (B)
 - 132 Papaya 1 ball (C)
 - 099 Almond 1 ball (D)
 - or colors of your choice
- Lion Brand® double pointed knitting needles size 7 (4.5 mm), set of 5
- Lion Brand® stitch marker
- Lion Brand® large-eyed blunt needle



GAUGE

17 sts + 24 rnds = 4 in. (10 cm) in St st worked in the rnd (k every rnd).
BE SURE TO CHECK YOUR GAUGE.

STITCH EXPLANATIONS

kfb (knit into front and back) Knit next st without removing it from left needle, then k through back of same st – 1 st increased.

sk2p Slip 1 as if to knit, knit 2 together, pass slipped stitch over – 2 sts decreased. **Note:** To work the last sk2p of a rnd, slip the last 2 sts of rnd as if to knit, then k first st of next rnd, pass both slipped stitches over.

ssk (slip, slip, knit) Slip next 2 sts as if to knit, one at a time, to right needle; insert left needle into fronts of these 2 sts and knit them together.

NOTES

1. Tam is worked in Fair Isle colorwork using 2 colors per round. Carry color not in use across wrong side of work.
2. Tam is worked in the round, read every rnd of Charts 1 and 2 from right to left.
3. Decreases for top of Tam (crown) are shown on Chart 2.

For thousands of free patterns, visit our website www.LionBrand.com

To order visit our website www.lionbrand.com or call: (800) 258-YARN (9276) any time!

Copyright ©1998-2016 Lion Brand Yarn Company, all rights reserved.

No pattern or other material may be reproduced -- mechanically, electronically, or by any other means, including photocopying - without written permission of Lion Brand Yarn Company.

TAM

With A, cast on 64 (72, 80) sts. Divide sts evenly onto 4 needles (16 (18, 20) sts per needle). Place marker for beg of rnd. Join by working the first st on left hand needle with the working yarn from the right hand needle and being careful not to twist sts.

Note: Rnd 1 is all knit to create a smooth transition between the single-color cast-on and the 2-color rib.

Rnd 1: *With A, k2; with B, k2; rep from * around.

Ribbing

Rnd 2: *With A, k2; with B, p2; rep from * around.

Rep Rnd 2 until piece measures 1 in. (2.5 cm).

Next (Increase) Rnd: With B only, *k1 (2, 4), kfb; rep from * around – 96 sts at the end of this rnd.

Change to St st worked in the rnd (k every rnd).

Baby Size ONLY

Note: All sizes of Tam are worked to the same circumference. Since the Baby size has fewer rnds worked for the crown shaping, additional rnds are worked prior to beginning the crown shaping to achieve the correct circumference.

Work 3 rnds for Baby size ONLY as follows:

Work 4-st rep of Rnd 14 of Chart 1 around.

Continue in St st worked in the rnd and work Rnds 15 and 16 of Chart 1..

ALL SIZES

Beg with Rnd 1, work 4-st rep of Chart 1 around.

Continue in St st worked in the rnd and Chart 1 as established until Rnd 16 has been completed.

Shape Crown

Next Rnd: Beg with Rnd 1, work 16-st rep of Chart 2 around.

Continue in St st worked in the rnd and Chart 2, working decreases as indicated on chart, until Rnd 19 has been completed – 12 sts remaining at the end of Rnd 19.

Next Rnd: With C only, work ssk 6 times around – 6 sts remain.

Cut yarn, leaving a long tail. Thread tail through remaining sts and pull to gather. Knot securely.

FINISHING

Weave in ends. Stretch Tam over a luncheon plate (about 8 1/2 - 9 in. (22-23 cm) diameter and spray lightly with water to block. Allow to dry.

For thousands of free patterns, visit our website www.LionBrand.com

To order visit our website www.lionbrand.com or call: (800) 258-YARN (9276) any time!

Copyright ©1998-2016 Lion Brand Yarn Company, all rights reserved.

No pattern or other material may be reproduced -- mechanically, electronically, or by any other means, including photocopying - without written permission of Lion Brand Yarn Company.

ABBREVIATIONS

beg = beginning

k = knit

p = purl

rep = repeat

rnd(s) = round(s)

st(s) = stitch(es)

St st = Stockinette stitch

Every effort has been made to produce accurate and complete instructions. We cannot be responsible for variance of individual knitters or crocheters, human error, or typographical mistakes.

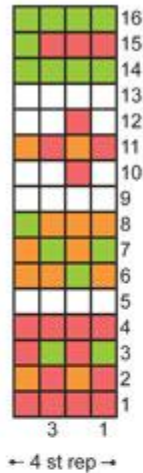
For thousands of free patterns, visit our website www.LionBrand.com

To order visit our website www.lionbrand.com or call: (800) 258-YARN (9276) any time!

Copyright ©1998-2016 Lion Brand Yarn Company, all rights reserved.

No pattern or other material may be reproduced -- mechanically, electronically, or by any other means, including photocopying - without written permission of Lion Brand Yarn Company.

CHART 1



- #172 Pear (A)
- #102 Peony (B)
- #132 Papaya (C)
- #099 Almond (D)
- ▲ **sk2p:** Slip 1 as if to knit, knit 2 tog, pass slipped st over - 2 sts decreased.
 Note: To work last sk2p in a rnd, slip last 2 sts as if to knit, k into first st of the next rnd, pass both slipped sts over.

CHART 2

