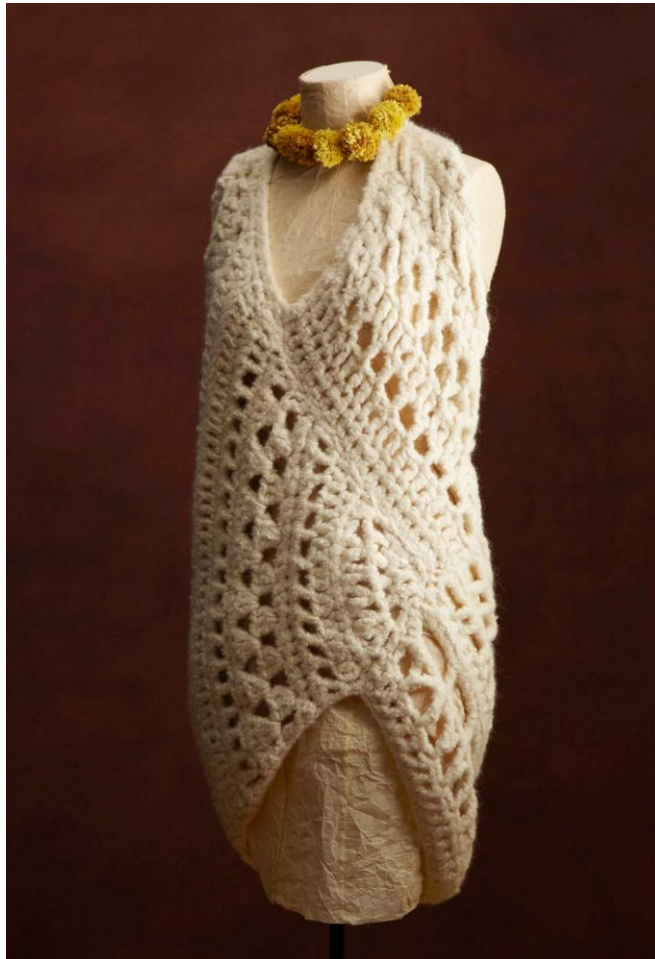




Free Crochet Pattern
**Lion Brand® LB Collection® Organic Wool-
Baby Alpaca-Silk Mohair-Superwash Merino
Crochet Hand-Felted Dress**
Pattern Number: L0283



SKILL LEVEL - Experienced

SIZE

Finished Length About 40 in. (101.5 cm) after felting

Finished Circumference (at widest point) About 50 in. (127 cm) after felting

Measurements are approximate since the felting process is somewhat variable.

MATERIALS

- Lion Brand® LB Collection® Organic Wool (Art. #481)
 - 098 Natural 5 skeins (A)
 - or color of your choice
- Lion Brand® LB Collection® Baby Alpaca (Art. #488)
 - 098 Natural 6 balls (B)
 - or color of your choice
- Lion Brand® LB Collection® Silk Mohair (Art. #484)
 - 100 Wisp 3 balls (C)
 - or color of your choice
- Lion Brand® LB Collection® Silk Superwash Merino (Art. #486)
 - 098 Antique 2 balls (D)
 - or color of your choice
- Lion Brand® crochet hook size Q-19 (15 mm)
- Lion Brand® stitch markers
- Lion Brand® large-eyed blunt needle



GAUGE

4 dc = about 3 in. (7.5 cm) with 2 strands each of A and B and one strand each of C and D held tog, after felting.

BE SURE TO CHECK YOUR GAUGE.

STITCH EXPLANATIONS

dc2tog (dc 2 sts together) Yarn over, insert hook into st and draw up a loop, yarn over and draw through 2 loops. Yarn over, insert hook into next st and draw up a loop. Yarn over, draw through 2 loops, yarn over and draw through all loops on hook – 1 st decreased.

hdc2tog (hdc 2 sts together) Yarn over, insert hook into st and draw up a loop. Yarn over, insert hook into next st and draw up a loop. Yarn over and draw through all 5 loops on hook – 1 st decreased.

sc2tog (sc 2 sts together) Insert hook into st and draw up a loop. Insert hook into next st and draw up a loop. Yarn over, draw through all 3 loops on hook – 1 st decreased.

For thousands of free patterns, visit our website www.LionBrand.com

To order visit our website www.lionbrand.com or call: (800) 258-YARN (9276) any time!

Copyright ©1998-2016 Lion Brand Yarn Company, all rights reserved.

No pattern or other material may be reproduced -- mechanically, electronically, or by any other means, including photocopying - without written permission of Lion Brand Yarn Company.

NOTES

1. Dress is worked with 6 strands of yarn held tog throughout.
2. Front, Right Side, and Left Side are each made separately, then seamed.
3. The construction of this dress is a bit unusual. Follow the assembly diagrams carefully.
4. Markers are placed on Front, Right Side and Left Side to indicate points where pieces will be seamed. To avoid confusion, use a different color marker for each seam.
5. The assembled Dress is felted by hand. Before beginning, please read carefully through the felting section at the end of this pattern to determine whether the needed tools are available to you.

FRONT

With 2 strands each of A and B and one strand each of C and D held tog, ch 21.
Row 1 (RS): Sc in 2nd ch from hook and in each ch across – 20 sc at the end of this row.

Place a marker in the last st of Row 1 for lower right Front seam placement.

Note: This is marker A on assembly diagram.

Place a marker in the first st of Row 1 for lower right Front seam placement.

Note: This is marker B on assembly diagram.

Row 2: Ch 1, turn, sc in each sc across.

Row 3: Ch 3 (counts as first dc here and throughout the instructions for the Front), turn, dc in each sc across.

Row 4: Ch 3, turn, dc in next dc, *ch 1, sk next dc, dc in next dc; rep from * across – 11 dc and 9 ch-1 sp at the end of this row.

Row 5: Ch 1, turn, sc in each dc and ch-1 sp across – 20 sc.

Row 6: Ch 1, turn, sc in first 2 sc, *ch 3, sk next sc, sc in next sc; rep from * across – 11 sc and 9 ch-3 sp at the end of this row.

Row 7: Ch 4, turn, *sc in next ch-3 sp, ch 3; rep from * across to last 2 sc, sk next sc, sc in last sc – 10 sc and 10 ch-sp.

Row 8: Ch 1, turn, 2 sc in each ch-sp across – 20 sc.

Row 9: Ch 2, turn, hdc in each sc across.

Row 10: Ch 7, turn, sk first hdc, sc in next hdc, *ch 7, sk next hdc, sc in next hdc; rep from * across – 10 sc and 10 ch-7 sp.

Row 11: Ch 2, turn, 2 sc in each ch-7 sp across – 20 sc.

Row 12: Ch 1, turn, sc in each sc across.

Row 13: Ch 3, turn, dc in back loop only of next st, *dc in next st, dc in back loop only of next st; rep from * across.

Place a marker in first st of Row 13 for lower left Front seam. **Note:** This is marker C on assembly diagram.

Do not fasten off.

Continuing with same strands of yarn, make a chain about 10 in. (25.5 cm) long for shoulder strap.

Fasten off.

For thousands of free patterns, visit our website www.LionBrand.com

To order visit our website www.lionbrand.com or call: (800) 258-YARN (9276) any time!

Copyright ©1998-2016 Lion Brand Yarn Company, all rights reserved.

No pattern or other material may be reproduced -- mechanically, electronically, or by any other means, including photocopying - without written permission of Lion Brand Yarn Company.

RIGHT SIDE

With 2 strands each of A and B, and one strand each of C and D held tog, ch 3.

Row 1 (RS): 3 sc in first ch – 3 sc at the end of this row.

Place marker in base of the 3-sc group for lower Front seam. **Note:** This is marker B on assembly diagram.

Row 2: Ch 3 (counts as first dc here and throughout the instructions for the Right Side), turn, dc in first sc (increase made), dc in next sc, 2 dc in last sc – 5 dc at the end of this row.

Row 3: Ch 4 (counts as dc, ch 1 here and throughout), turn, dc in first dc, *ch 1, dc in next dc; rep from * across to last dc, ch 1, (dc, ch 1, dc) in last dc – 7 dc and 6 ch-1 sp.

Row 4: Ch 5, turn, (sc, ch 5, sc) in first ch-1 sp, *ch 5, sc in next ch-1 sp; rep from * across to last ch-1 sp (turning ch-sp), ch 5, (sc, ch 5, sc, ch 5, sc) in turning ch-sp – 9 ch-5 sp.

Row 5: Turn, sl st in first 3 ch of first ch-5 sp, ch 1, sc in same ch-5 sp, *ch 1, sc in next ch-5 sp; rep from * across – 9 sc and 8 ch-1 sp at the end of this row.

Row 6: Ch 1, turn, sc in each sc and ch-1 sp across – 17 sc.

Row 7: Ch 2 (counts as first hdc), turn, working in back loops only, hdc in first sc, hdc in each sc across to last sc, 2 hdc in last sc – 19 hdc.

Row 8: Ch 4, turn, dc in first st, ch 1, sk next st, *dc in next st, ch 1, sk next st; rep from * across to last st, (dc, ch 1, dc) in last st – 12 dc and 11 ch-1 sp.

Row 9: Ch 1, turn, 2 sc in first ch-1 sp, sc in next dc, *sc in next ch-1 sp, sc in next dc; rep from * across to turning ch-sp, 2 sc in turning ch-sp – 23 sc.

Row 10: Ch 1, turn, 2 sc in first sc, sc in each sc across to last sc, 2 sc in last sc. – 25 sc.

Row 11: Ch 3, turn, 2 dc in first sc, *ch 1, sk next 2 sc, 3 dc in next sc; rep from * across to last 3 sc, sk next 2 sc, 3 dc in last sc – 27 dc and 8 ch-1 sp.

Place a marker in the first st of Row 11 for lower right Front seam placement.

Note: This is marker A on assembly diagram.

Row 12: Ch 3, turn, dc in first dc, *ch 1, 3 dc in next ch-1 sp; rep from * across, ch 1, 2 dc in last dc – 28 dc and 9 ch-1 sp at the end of this row.

Row 13: Ch 1, turn, 2 sc in first dc, sc in each dc and ch-1 sp across, 2 sc in last dc – 39 sc.

Row 14: Rep Row 8 – 22 dc and 21 ch-1 sp.

Row 15: Ch 1, turn, sc in each dc and ch-1 sp across – 43 sc.

Row 16: Ch 3, turn, dc in each sc across.

Row 17: Ch 1, turn, working in back loops only, 2 sc in first dc, sc in each dc across to last dc, 2 sc in last dc – 45 sc.

Row 18: Ch 3, turn, dc in first st and in each st across to last st, 2 dc in last st – 47 dc.

Place marker in first st of Row 18. **Note:** This is marker D on assembly diagram.

Place marker in last st of Row 18 for shoulder seam placement. **Note:** This is marker E on assembly diagram.

Row 19: Ch 4, turn, sk next sc, *dc in next sc, ch 1, sk next sc; rep from * across to last sc, dc in last sc – 24 dc and 23 ch-1 sps.

Rows 20 and 21: Rep Rows 15 and 16 – 47 dc at the end of Row 20.

For thousands of free patterns, visit our website www.LionBrand.com

To order visit our website www.lionbrand.com or call: (800) 258-YARN (9276) any time!

Copyright ©1998-2016 Lion Brand Yarn Company, all rights reserved.

No pattern or other material may be reproduced -- mechanically, electronically, or by any other means, including photocopying - without written permission of Lion Brand Yarn Company.

Place marker in first st of Row 21 for shoulder seam placement. **Note:** This is marker F on assembly diagram.

Row 22: Ch 5, turn, sk first 3 dc, dc in next dc, *ch 2, sk next 2 dc, dc in next dc; rep from * across to last 4 dc, ch 5, sk next 3 dc, sl st in last dc – 14 dc and 13 ch-2 sp.

Row 23: Turn, sl st in each ch to first dc, sc in first dc, ch 3, sk next ch-3 sp, dc in next dc, *2 dc in next ch-2 sp, dc in next dc; rep from * across to last ch-2 sp, ch 3, sk next ch-2 sp, sc in last dc – 34 dc.

Row 24: Turn, sl st in each st to first dc, sc in first dc, ch 3, sk next dc, dc in next dc, *ch 1, sk next dc, 3 dc in next dc, ch 1, sk next dc, dc in next dc; rep from * across to last 3 dc, ch 3, sk next 2 dc, sc in last dc – 29 dc and 14 ch-1 sp at the end of this row.

Row 25: Turn, sl st in each st to first dc, sc in first dc, ch 4, sk next 2 dc, dc in next dc and in each dc and ch-1 sp across to last 3 dc, ch 4, sk next 2 dc, sc in next dc – 35 dc.

Row 26: Turn, sl st in each st to first dc, sc2tog over first 2 dc, *sc in next dc, sc2tog; rep from * across – 23 sts.

Place a marker in the last st of Row 26 for side seam placement. **Note:** This is marker G on assembly diagram.

Fasten off.

LEFT SIDE

With 2 strands each of A and B, and one strand each of C and D held tog, ch 33.

Row 1 (RS): Sc in 2nd ch from hook and in each ch across – 32 sc at the end of this row.

Row 2: Ch 3 (counts as first dc here and throughout the instructions for the Left Side), turn, dc in each sc across.

Row 3: Ch 5, turn, sk first st, sc in next st, *ch 5, sk next st, sc in next st; rep from * across – 16 sc and 16 ch-5 sp at the end of this row.

Row 4: Turn, sl st in each ch to 3rd ch of first ch-5 sp, sc in 3rd ch of first ch-5 sp, *ch 1, sc in next ch-5 sp; rep from * across – 16 sc and 15 ch-1 sp at the end of this row.

Row 5: Ch 6 (counts as dc, ch 3), turn, sk next ch-1 sp, dc in next ch-1 sp, *ch 3, sk next ch-1 sp, dc in next ch-1 sp; rep from * across to last ch-1 sp, ch 3, sk last ch-1 sp, dc in last sc – 9 dc and 8 ch-3 sp.

Row 6: Ch 1, turn, sc in first dc, *3 sc in next ch-3 sp, sc in next dc; rep from * across – 33 sc.

Row 7: Ch 3, turn, working in back loops only, hdc in each sc across.

Place marker in first st of Row 7 for side seam placement. **Note:** This is marker D on assembly diagram.

Row 8: Ch 4 (counts as dc, ch 1), sk next st, *dc in next 2 sts, ch 1, sk next st; rep from * across to last st, dc in last st – 22 dc and 11 ch-1 sp.

Row 9: Ch 1, turn, sc in each ch-1 sp and dc across – 33 sc.

Row 10: Ch 5 (counts as tr, ch 1), turn, sk next st, tr in next st, *ch 1, sk next st, tr in next st; rep from * across to last 2 sts, (do not ch 1), sk next st, tr in last st – 17 tr and 15 ch-1 sp.

For thousands of free patterns, visit our website www.LionBrand.com

To order visit our website www.lionbrand.com or call: (800) 258-YARN (9276) any time!

Copyright ©1998-2016 Lion Brand Yarn Company, all rights reserved.

No pattern or other material may be reproduced -- mechanically, electronically, or by any other means, including photocopying - without written permission of Lion Brand Yarn Company.

Row 11: Ch 1, turn, sk first tr, sc in each tr and ch-1 sp across – 31 sts.

Row 12: Ch 4 (counts as dc, ch 1 here and throughout), turn, sk next 2 sts, *3 dc in next st, ch 1, sk next 2 sts; rep from * across to last st, dc in last st – 29 dc and 10 ch-1 sp.

Row 13: Ch 4, turn, sk first ch-1 sp, *3 dc in next ch-1 sp, ch 1; rep from * across to last ch-sp, dc in last ch-sp (turning ch-sp) – 26 dc and 9 ch-1 sp.

Row 14: Ch 4, turn, 3 dc in first ch-1 sp, *ch 1, 3 dc in next ch-1 sp; rep from * across to turning ch-sp, ch 1, 3 dc in turning ch-sp, ch 1, dc in 3rd ch of turning ch – 29 dc and 10 ch-1 sp.

Row 15: Ch 1, turn, working in back loops only and skipping all the ch-1 sps, sc2tog over first 2 dc, sc in each dc across – 28 sc.

Row 16: Ch 5 (counts as dc, ch 2), turn, sk next 2 sts, dc in next 2 sts, *ch 2, sk next 2 sts, dc in next 2 sts; rep from * across to last 3 sts, ch 2, sk next 2 sts, dc in last st – 14 dc and 7 ch-2 sp.

Row 17: Ch 1, turn, 2 sc in first ch-2 sp, *sc in next 2 dc, 2 sc in next ch-2 sp; rep from * across to last dc, sc in last dc – 27 sc.

Row 18: Ch 3, turn, dc in each sc across.

Place marker in first st of Row 18 for lower left front seam placement. **Note:** This is marker C on assembly diagram.

Row 19: Ch 3, turn, working in back loops only, dc2tog, dc in each st across – 26 dc.

Row 20: Ch 5 (counts as dc, ch 2), turn, sk next 2 dc, *dc in next 2 dc, ch 2, sk next 2 dc; rep from * across to last 3 sts, dc in last 3 dc – 14 dc and 6 ch-2 sp.

Row 21: Ch 1, turn, sc2tog, sc in next dc, *2 sc in next ch-2 sp, sc in next 2 dc; rep from * across to last ch-2 sp (turning ch-sp), 2 sc in turning ch-sp, sc in 3rd ch of turning ch – 25 sc.

Row 22: Ch 3, turn, dc in each st across to last to 2 sts, dc2tog – 24 dc.

Row 23: Ch 2, turn, working in back loops only, hdc2tog, hdc in each st across – 23 hdc.

Row 24: Ch 5, turn, sk first 2 sts st, sc in next st, *ch 5, sk next st, sc in next st; rep from * across – 11 sc and 11 ch-5 sp.

Row 25: Turn, sl st in each st to 3rd ch of first ch-5 sp, sc in first ch-5 sp, *ch 1, sc in next ch-5 sp; rep from * across – 11 sc and 10 ch-1 sp.

Place marker in last st of Row 25 for shoulder strap placement. **Note:** This is marker H on assembly diagram.

Row 26: Ch 4, turn, sk first ch-1 sp, dc in next sc, *ch 1, sk next ch-1 sp, dc in next sc; rep from * across – 11 dc and 10 ch-1 sp.

Row 27: Ch 1, turn, sk first dc, sc in each dc and ch-1 sp across – 20 sc.

Row 28: Ch 3, turn, dc in next sc, *ch 1, sk next sc, dc in next 2 sc; rep from * across – 14 dc and 6 ch-1 sp.

Row 29: Ch 2, turn, hdc2tog, hdc in each ch-1 sp and dc across – 19 hdc.

Row 30: Ch 3, turn, dc in each st across.

Row 31: Ch 1, turn, working in back loops only, sc2tog, sc in each st across – 18 sc.

Place marker in first st of Row 31 for side seam placement. **Note:** This is marker G on assembly diagram.

For thousands of free patterns, visit our website www.LionBrand.com

To order visit our website www.lionbrand.com or call: (800) 258-YARN (9276) any time!

Copyright ©1998-2016 Lion Brand Yarn Company, all rights reserved.

No pattern or other material may be reproduced -- mechanically, electronically, or by any other means, including photocopying - without written permission of Lion Brand Yarn Company.

Row 32: Ch 2, turn, hdc in first st and in next 3 sts; leave rem sts unworked – 4 sts.

Place marker in first st of Row 32 for shoulder seam placement. **Note:** This is marker E on assembly diagram. Place marker in last st of Row 32 for shoulder seam placement. **Note:** This is marker F on assembly diagram. Fasten off.

FINISHING

Follow diagrams for assembly.

From RS, match markers A and B on Front and Right Side for lower right Front seam. Sew lower right Front seam.

From RS, match markers C on Front and Left Side for lower left Front seam. Beg at marker C, sew lower left Front seam, and continue seam between Left Side and Right Side to lower edge of Left Side.

From RS, align markers E and F on Right and Left Sides for shoulder seam. Sew shoulder seam.

Edging

Join 1 strand each of A, B, C, and D held tog with sl st in top edge at shoulder seam (at marker E).

Round 1: Ch 1, work sc evenly spaced across top edge to shoulder strap, work sc evenly spaced up one side of shoulder strap chain and back down the other side of chain, sc evenly spaced around rem top edge; join with sl st in first sc.

Sew end of shoulder strap chain to Left Side at marker H.

From RS, match markers D and G for side seam. Sew side seam.

Felting

Weave in ends.

Note: Dress is very lightly felted by hand. Because this is a large piece, we suggest felting in a bathtub. You may want to have a second person available to assist in lifting the wet Dress from the bathtub.

You will also need access to a clothes dryer with a low heat setting, and a flat, waterproof area about 3 x 4 ft. (91.5 x 122 cm) where Dress can be left undisturbed until completely dry. The drying process may take several days.

Fill bathtub with a few inches of hot water and a small amount of liquid soap (any soap, hand or dish soap will work). Wearing rubber gloves, submerge Dress in soapy water. Rub over surface of crochet fabric, working over entire surface until sts begin to lose their definition.

Rinse gently to remove soap residue.

Roll Dress in several changes of clean towels, squeezing out as much water as possible.

Spread Dress onto a flat, waterproof surface and pull into shape.

For thousands of free patterns, visit our website www.LionBrand.com

To order visit our website www.lionbrand.com or call: (800) 258-YARN (9276) any time!

Copyright ©1998-2016 Lion Brand Yarn Company, all rights reserved.

No pattern or other material may be reproduced -- mechanically, electronically, or by any other means, including photocopying - without written permission of Lion Brand Yarn Company.

Allow Dress to dry completely.

ABBREVIATIONS

beg = beginning

ch = chain

ch-sp = space previously made

dc = double crochet

hdc = half double crochet

rem = remain(ing)

rep = repeat

RS = right side

sc = single crochet

sk = skip

sl st = slip stitch

st(s) = stitch(es)

tog = together

tr = triple (treble) crochet

Every effort has been made to produce accurate and complete instructions. We cannot be responsible for variance of individual knitters or crocheters, human error, or typographical mistakes.

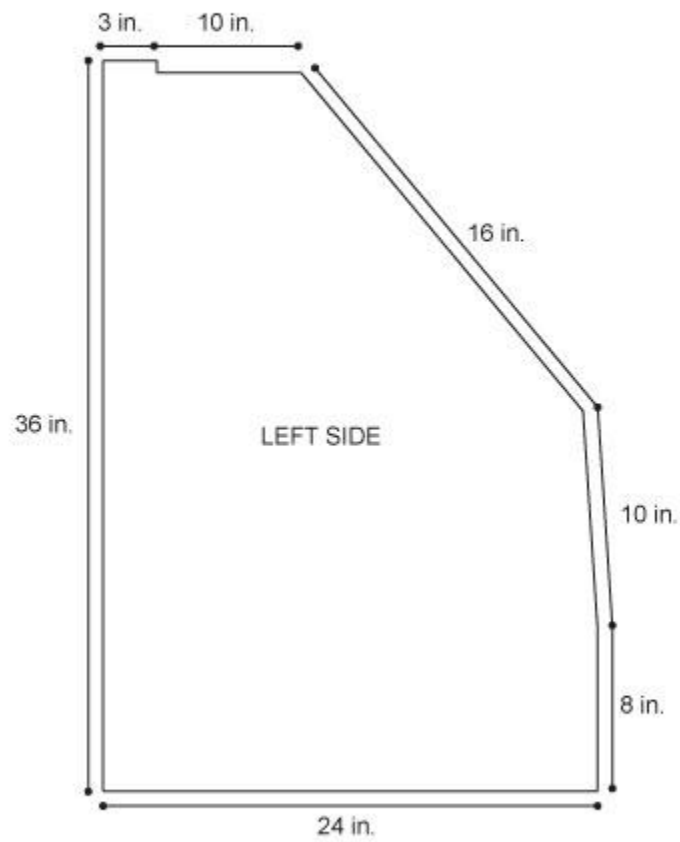
For thousands of free patterns, visit our website www.LionBrand.com

To order visit our website www.lionbrand.com or call: (800) 258-YARN (9276) any time!

Copyright ©1998-2016 Lion Brand Yarn Company, all rights reserved.

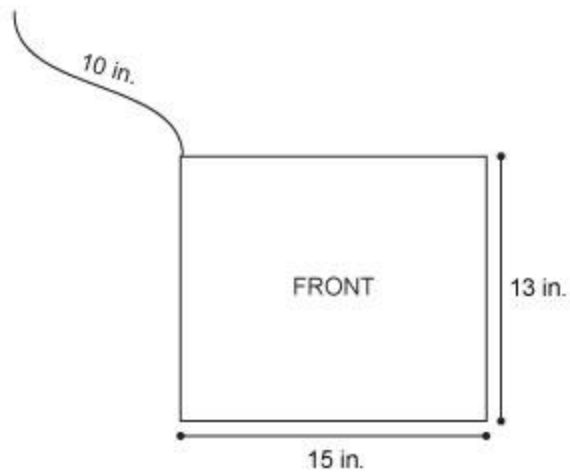
No pattern or other material may be reproduced -- mechanically, electronically, or by any other means, including photocopying - without written permission of Lion Brand Yarn Company.

Lion Brand® LB Collection® Organic Wool-Baby Alpaca-Silk Mohair-
Superwash Merino Crochet Hand-Felted Dress
Pattern Number: L0283



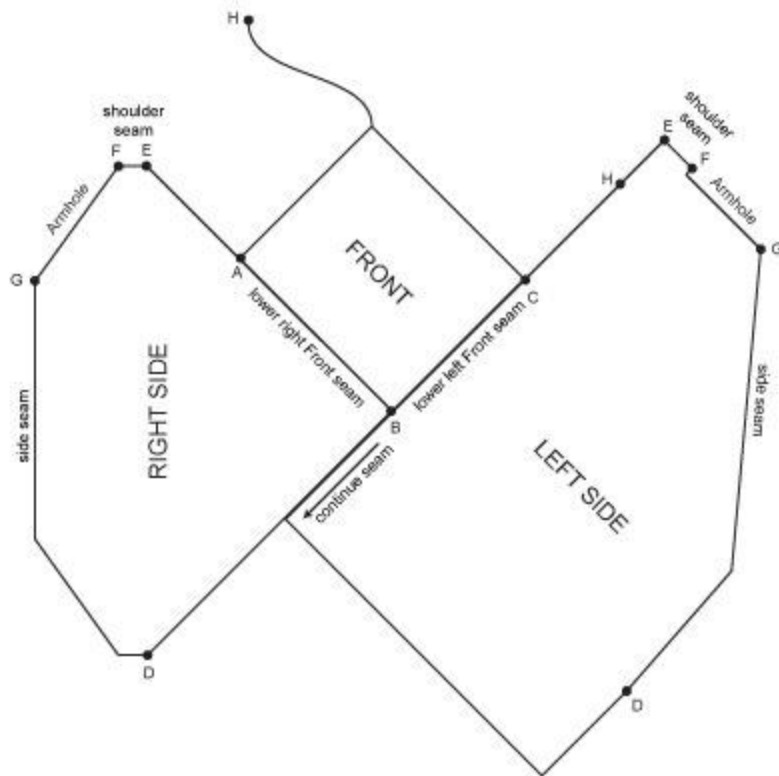
For thousands of free patterns, visit our website www.LionBrand.com
To order visit our website www.lionbrand.com or call: (800) 258-YARN (9276) any time!
Copyright ©1998-2016 Lion Brand Yarn Company, all rights reserved.
No pattern or other material may be reproduced -- mechanically, electronically, or by any other means, including
photocopying - without written permission of Lion Brand Yarn Company.

Lion Brand® LB Collection® Organic Wool-Baby Alpaca-Silk Mohair-
Superwash Merino Crochet Hand-Felted Dress
Pattern Number: L0283



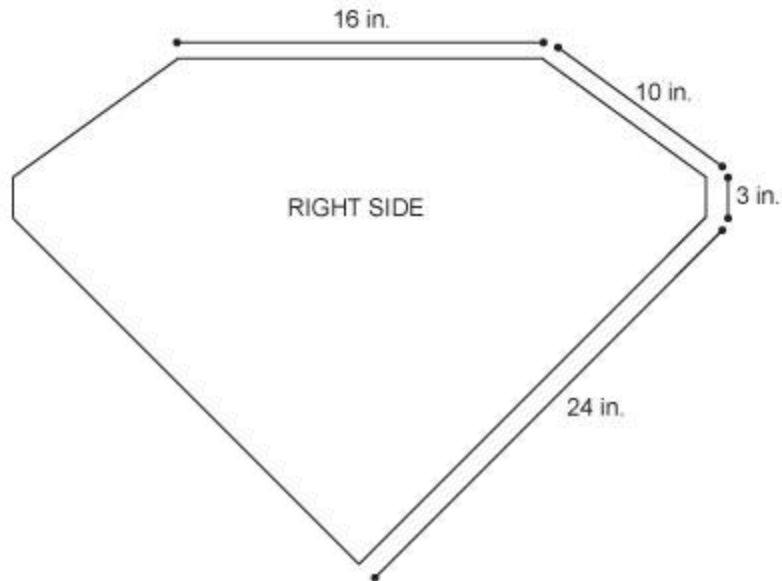
For thousands of free patterns, visit our website www.LionBrand.com
To order visit our website www.lionbrand.com or call: (800) 258-YARN (9276) any time!
Copyright ©1998-2016 Lion Brand Yarn Company, all rights reserved.
No pattern or other material may be reproduced -- mechanically, electronically, or by any other means, including
photocopying - without written permission of Lion Brand Yarn Company.

Lion Brand® LB Collection® Organic Wool-Baby Alpaca-Silk Mohair-
Superwash Merino Crochet Hand-Felted Dress
Pattern Number: L0283



For thousands of free patterns, visit our website www.LionBrand.com
To order visit our website www.lionbrand.com or call: (800) 258-YARN (9276) any time!
Copyright ©1998-2016 Lion Brand Yarn Company, all rights reserved.
No pattern or other material may be reproduced -- mechanically, electronically, or by any other means, including photocopying - without written permission of Lion Brand Yarn Company.

Lion Brand® LB Collection® Organic Wool-Baby Alpaca-Silk Mohair-
Superwash Merino Crochet Hand-Felted Dress
Pattern Number: L0283



For thousands of free patterns, visit our website www.LionBrand.com
To order visit our website www.lionbrand.com or call: (800) 258-YARN (9276) any time!
Copyright ©1998-2016 Lion Brand Yarn Company, all rights reserved.
No pattern or other material may be reproduced -- mechanically, electronically, or by any other means, including
photocopying - without written permission of Lion Brand Yarn Company.